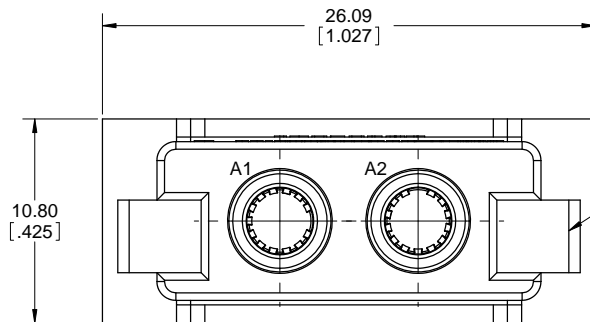
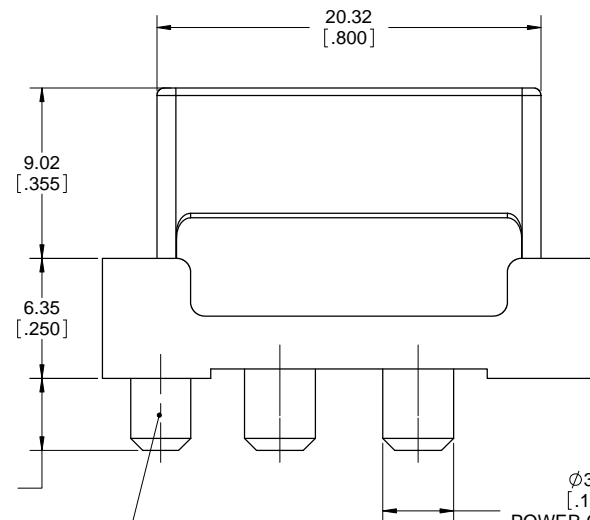




| REVISIONS |                                 |          |      |
|-----------|---------------------------------|----------|------|
| REV       | DESCRIPTION, ECN, EAR NO.       | DATE     | APPD |
| A         | PROPOSAL DWG (EAR 13803)        | NOV18/10 |      |
| B         | UPDATE (EAR 13812)              | DEC03/10 |      |
| C         | UPDATE WITH FINAL DESIGN        | JAN13/11 |      |
| D         | SPEC UPDATE (EAR 13936)         | AUG23/11 | S.M  |
| E         | TOLERANCES ADDED                | FEB1/12  | S.M  |
| F         | UL FILE NUMBER ADDED            | MAR26/12 | S.M  |
| G         | UPDATED WITH MACHINED CB HOLDER | DEC06/12 | S.M  |

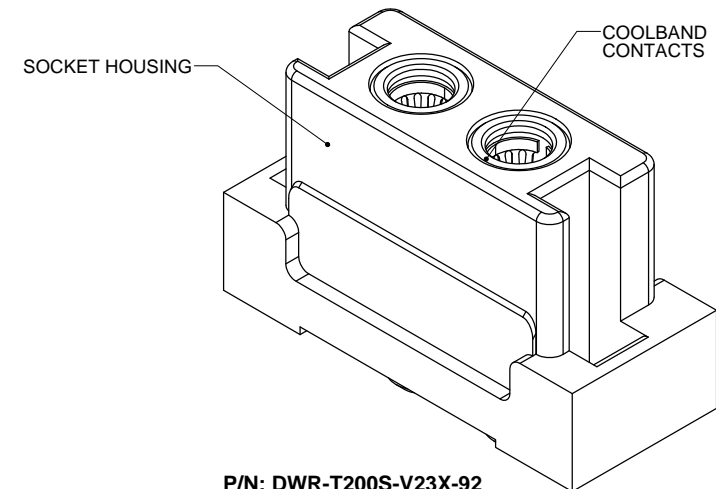
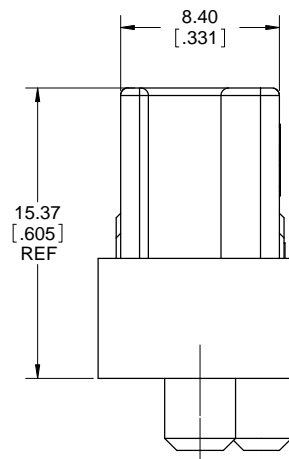
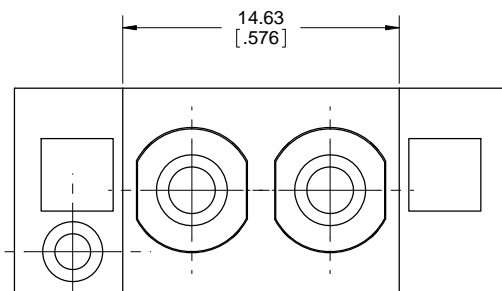


SLOT ACCEPTS PIN CONNECTOR HOUSING BLADE LOCATED OFF CENTER TO PREVENT IMPROPER MATING



ORIENTATION PEG PREVENTS ASSEMBLY ERRORS

Ø3.75 [.148]  
POWER CONTACT TAILS (2 PLACES)



**P/N: DWR-T200S-V23X-92**

#### NOTES:

- MATERIALS: ALL MATERIALS ARE RoHS COMPLIANT PER EU DIRECTIVE 2002/95/EC AND AMENDMENTS.
  - HOUSING: HIGH TEMPERATURE RESISTANT NYLON, UL FLAMMABILITY RATING 94V-0, COLOUR BLACK
  - POWER CONTACTS: BERYLLIUM COPPER COOLBAND MATING GRID, TELLURIUM COPPER ALLOY BALANCE.
- PLATING:
  - FOR P/N DWR-T200S-V233-92, MATING GRID PLATED WITH 0.76µm (30µ") GOLD OVER 1.27µm (50µ") NICKEL, 2.54µm (100µ") MATTE TIN BALANCE.
  - FOR P/N DWR-T200S-V236-92, MATING GRID PLATED WITH 5.08µm (200µ") SILVER OVER 1.27µm (50µ") NICKEL, SILVER OVER NICKEL BALANCE.
- WHEN MATING WITH PIN CONNECTOR P/N DWR-T200P-V23X-94 OR DWR-T200P-V23X-93, THE INSERTION FORCE REQUIRED WILL BE 5 KG MAX. THE WITHDRAWAL FORCE REQUIRED FOR SEPARATION WILL BE 0.7 KG MIN, 3 KG MAX. THE ORDER OF MECHANICAL AND ELECTRICAL ENGAGEMENT IS A) HOUSING BLADES, B) HOUSING SHROUD AND C) POWER CONTACTS
- ELECTRICAL CHARACTERISTICS
  - CURRENT RATING: 40A PER CONTACT
  - OPERATING TEMPERATURE: -55C TO +105
  - DIELECTRIC WITHSTANDING VOLTAGE: 1500VDC
  - INSULATION RESISTANCE: 5000 MEGAOHMS
- UL FILE NUMBER: E64911

|                            |                        |           |          |
|----------------------------|------------------------|-----------|----------|
| UNLESS SPECIFIED OTHERWISE | DRAWN                  | S.CAELERS | NOV18/10 |
| PRIMARY UNITS MILLIMETERS  | CHECKED                |           |          |
| SECONDARY INCHES           | M.E. APP'D             |           |          |
| REFERENCE IN PARENTHESES   | Q.A. APP'D             |           |          |
| GENERAL TOLERANCES         | DWG APPR.              |           |          |
| 1 DECIMAL PLACE            | ENG. REL. NO.          | EAR 13803 |          |
| 2 DECIMAL PLACES ±0.100    | REF.                   |           |          |
| 3 DECIMAL PLACES           | THIRD ANGLE PROJECTION |           |          |
| ANGULAR DEGREES            |                        |           |          |

**Amphenol Canada Corp.**

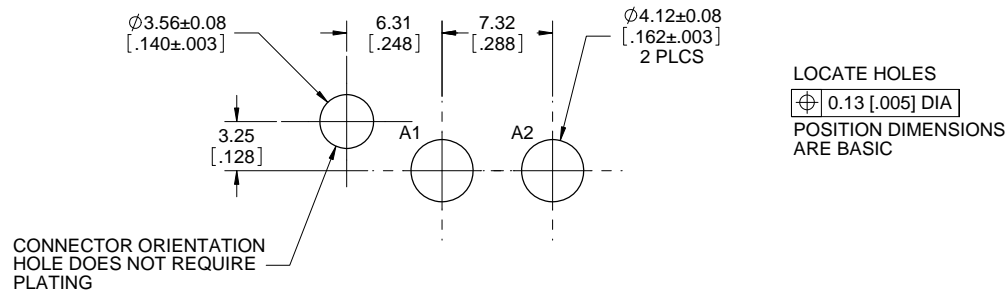
DWR SERIES SLIM DRAWER, 2 POWER SOCKET CONNECTOR, SIZE 10 COOL POWER, SPECIAL .288" PITCH, PCB TAILS, RoHS COMPLIANT

**P-DWR-T200S-V23X-92**

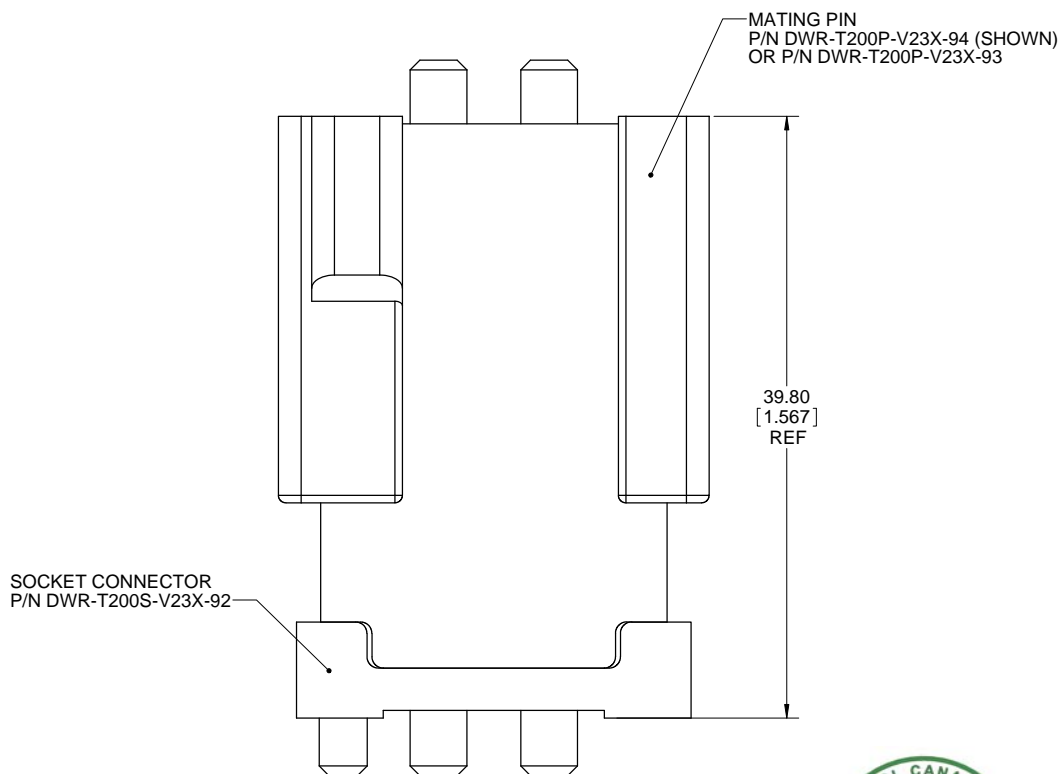
REV  
**G**

CODE ID NO. 03554 DWG SIZE: X SCALE: 5:1 SHEET 1 OF 2

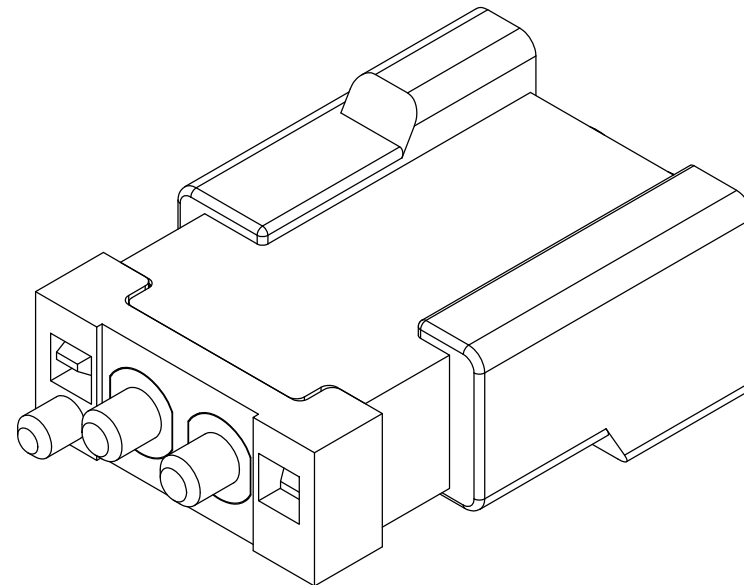
| REVISIONS |                                 |          |       |
|-----------|---------------------------------|----------|-------|
| REV       | DESCRIPTION, ECN, EAR NO.       | DATE     | APP'D |
| A         | PROPOSAL DWG (EAR 13803)        | NOV18/10 |       |
| B         | UPDATE (EAR 13812)              | DEC03/10 |       |
| C         | UPDATE WITH FINAL DESIGN        | JAN13/11 |       |
| D         | SPEC UPDATE (EAR 13936)         | AUG23/11 | S.M   |
| E         | TOLERANCES ADDED                | FEB1/12  | S.M   |
| F         | UL FILE NUMBER ADDED            | MAR26/12 | S.M   |
| G         | UPDATED WITH MACHINED CB HOLDER | DEC06/12 | S.M   |



**RECOMMENDED PCB LAYOUT**  
(COMPONENT SIDE OF BOARD)  
SCALE 4:1



**MATED ASSEMBLY**  
SIDE VIEW  
SCALE 4:1



|                            |                        |           |          |
|----------------------------|------------------------|-----------|----------|
| UNLESS SPECIFIED OTHERWISE | DRAWN                  | S.CAELERS | NOV18/10 |
| PRIMARY UNITS MILLIMETERS  | CHECKED                |           |          |
| SECONDARY INCHES           | M.E. APP'D             |           |          |
| REFERENCE IN PARENTHESES   | Q.A. APP'D             |           |          |
| GENERAL TOLERANCES         | DWG APPR.              |           |          |
| 1 DECIMAL PLACE            | ENG. REL. NO.          | EAR 13803 |          |
| 2 DECIMAL PLACES ±0.100    | REF.                   |           |          |
| 3 DECIMAL PLACES           | THIRD ANGLE PROJECTION |           |          |
| ANGULAR DEGREES            |                        |           |          |

**Amphenol Canada Corp.**

DWR SERIES SLIM DRAWER, 2 POWER  
SOCKET CONNECTOR, SIZE 10 COOL  
POWER, SPECIAL .288" PITCH,  
PCB TAILS, RoHS COMPLIANT

P-DWR-T200S-V23X-92

REV  
G

# Mouser Electronics

Authorized Distributor

Click to View Pricing, Inventory, Delivery & Lifecycle Information:

[Amphenol:](#)

[DWR-T200S-V236-92](#) [DWRT820PV21300](#) [DWRT820PV21600](#) [DWRT820PV31600](#) [DWRT820PV31300](#)  
[DWRT018SV23301](#) [DWRT018PV23301](#) [DWRT820SV31300](#)