

## Surge protection device - D-DS1-A/RJ45-BB - 2838050

Please be informed that the data shown in this PDF Document is generated from our Online Catalog. Please find the complete data in the user's documentation. Our General Terms of Use for Downloads are valid (<http://phoenixcontact.com/download>)



Attachment connector with surge protection for T1/E1 systems. Connection: RJ45 sockets

### Product Features

- For applications with T1 (DS1) or E1 data transmission protocol
- Connection via a keyed RJ45 (RJ48) socket
- High transmission bandwidth



### Key Commercial Data

Packing unit	1 pc
Weight per Piece (excluding packing)	124.0 g
Custom tariff number	85363010
Country of origin	Germany

### Technical data

#### Dimensions

Height	25.4 mm
Width	25.4 mm
Depth	102 mm

#### Ambient conditions

Ambient temperature (operation)	-40 °C ... 80 °C
Degree of protection	IP20

#### General

Housing material	Aluminum
Color	black
Standards for clearances and creepage distances	VDE 0110-1
	IEC 60664-1

# Surge protection device - D-DS1-A/RJ45-BB - 2838050

## Technical data

### General

Mounting type	Connection-specific intermediate plugging
Type	Attachment plug
Direction of action	Line-Line & Line-Earth Ground

### Protective circuit

IEC test classification	C2
	C3
	D1
VDE requirement class	C2
	C3
	D1
Maximum continuous voltage $U_C$	7 V DC
Maximum continuous voltage $U_C$ (wire-wire)	7 V DC
Nominal current $I_N$	1.5 A (25 °C)
Operating effective current $I_C$ at $U_C$	$\leq 1$ mA
Residual current $I_{PE}$	$\leq 4$ $\mu$ A
Nominal discharge current $I_n$ (8/20) $\mu$ s (Core-Core)	350 A
Nominal discharge current $I_n$ (8/20) $\mu$ s (Core-Earth)	2.5 kA
Total surge current (8/20) $\mu$ s	10 kA
Output voltage limitation at 1 kV/ $\mu$ s (Core-Earth) spike	$\leq 450$ V
Output voltage limitation at 1 kV/ $\mu$ s (Core-Core) static	$\leq 20$ V
Output voltage limitation at 1 kV/ $\mu$ s (Core-Earth) static	$\leq 450$ V
Residual voltage at $I_n$ (conductor-conductor)	$\leq 50$ V
Residual voltage at $I_n$ (conductor-ground)	$\leq 25$ V
Voltage protection level $U_p$ (core-core)	$\leq 50$ V
Voltage protection level $U_p$ (core-ground)	$\leq 600$ V
Response time $t_A$ (Core-Core)	$\leq 500$ ns
Response time $t_A$ (Core-Earth)	$\leq 100$ ns
Input attenuation aE, sym.	0.1 dB ( $\leq 10$ MHz)
Cut-off frequency $f_g$ (3 dB), sym. in 100 Ohm system	$\geq 100$ MHz
Capacity (Core-Core)	20 pF ( $f=1$ MHz / $V_R=0$ V)
Impulse durability (conductor-conductor)	C1 - 500 V / 250 A
Impulse durability (conductor-ground)	C2 - 10 kV/5 kA
	D1 - 1 kA

### Connection data

Connection method	RJ45
Connection type IN	RJ45 socket

## Surge protection device - D-DS1-A/RJ45-BB - 2838050

### Technical data

#### Connection data

Connection type OUT	RJ45 socket
---------------------	-------------

#### Standards and Regulations

Standards/regulations	IEC 61643-21
-----------------------	--------------

### Classifications

#### eCl@ss

eCl@ss 4.0	27140201
eCl@ss 4.1	27130801
eCl@ss 5.0	27130801
eCl@ss 5.1	27130801
eCl@ss 6.0	27130807
eCl@ss 7.0	27130807
eCl@ss 8.0	27130807
eCl@ss 9.0	27130807

#### ETIM

ETIM 2.0	EC000943
ETIM 3.0	EC000943
ETIM 4.0	EC000943
ETIM 5.0	EC000943

#### UNSPSC

UNSPSC 6.01	30212010
UNSPSC 7.0901	39121610
UNSPSC 11	39121610
UNSPSC 12.01	39121610
UNSPSC 13.2	39121620

### Approvals

#### Approvals

---

Approvals

EAC

---

## Surge protection device - D-DS1-A/RJ45-BB - 2838050

### Approvals

Ex Approvals

---

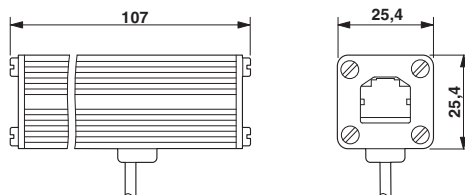
Approvals submitted

### Approval details

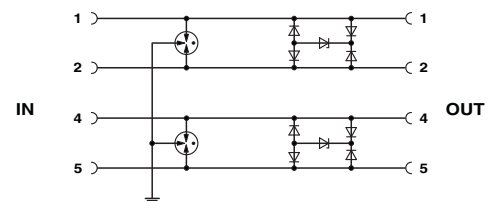
EAC
-----

### Drawings

Dimensional drawing



Circuit diagram



# Mouser Electronics

Authorized Distributor

Click to View Pricing, Inventory, Delivery & Lifecycle Information:

[Phoenix Contact:](#)

[2838050](#)