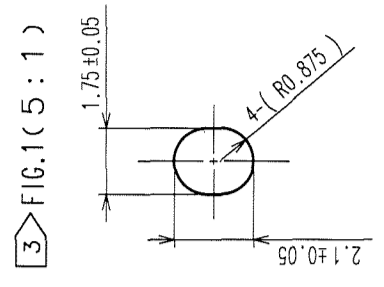
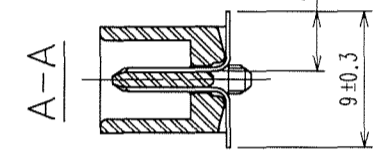
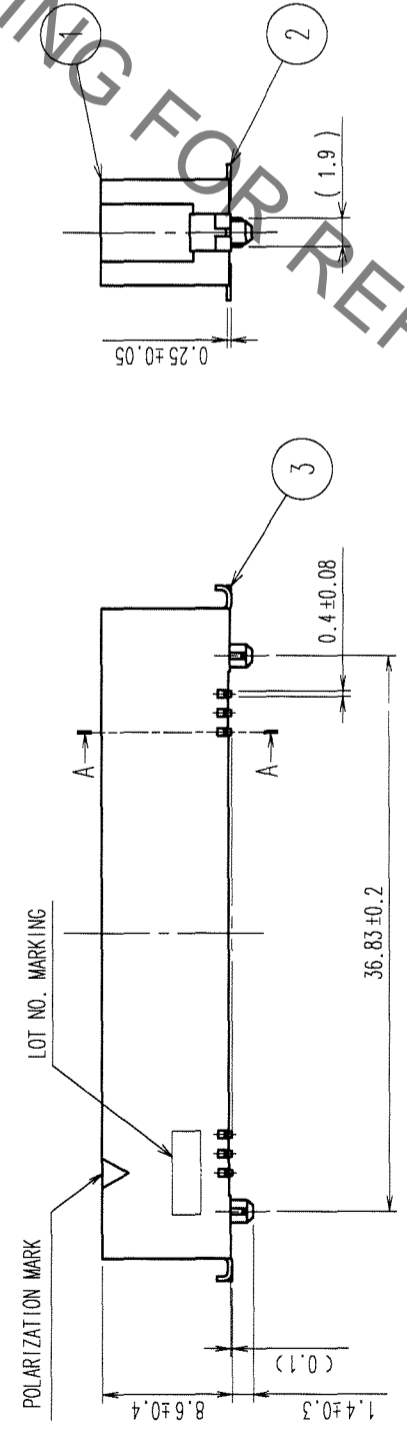
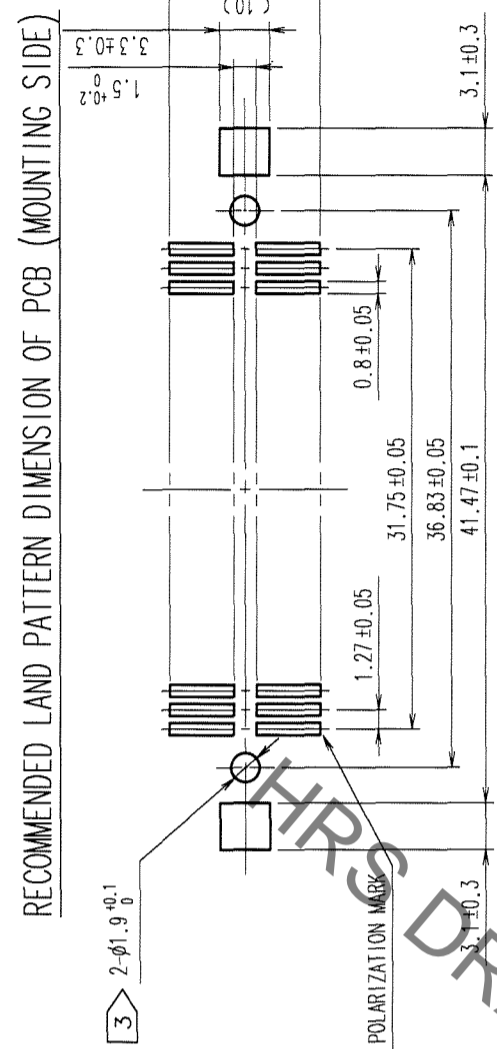
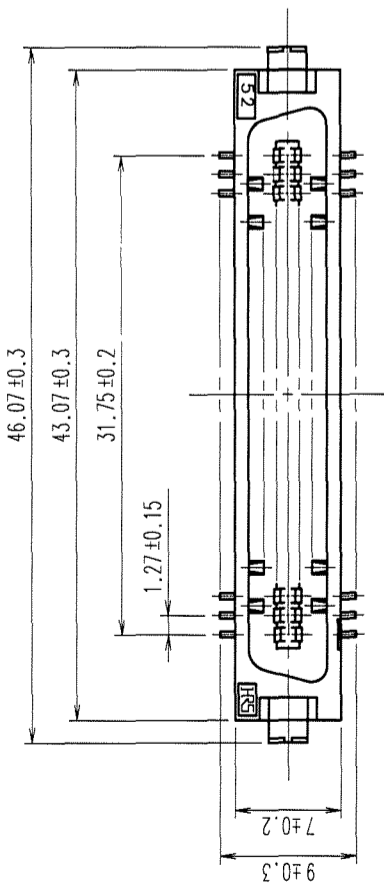


Oct.1.2020 Copyright 2020 HIROSE ELECTRIC CO., LTD. All Rights Reserved.

In case of consideration for using Automotive equipment / device which demand high reliability, kindly contact our sales window correspondents.

COUNT	DESCRIPTION OF REVISIONS	BY	CHKD	DATE	COUNT	DESCRIPTION OF REVISIONS	BY	CHKD	DATE
△					△				
△					△				
△					△				



RECOMMENDED LAND PATTERN DIMENSION OF PCB (MOUNTING SIDE)

3 > 2-φ1.9^{+0.1}₀

POLARIZATION MARK

POLARIZATION MARK

LOT NO. MARKING

- NOTES
- 1 LEAD CO-PLANARITY SHALL BE 0.15 MAX.
 - 2 THE DIMENSIONS IN PARENTHESES ARE FOR REFERENCE.
 - 3 > IN CASE OF THE AUTOMATED MOUNTING, RECOMMENDED HOLE DIAMETER OF BOSS IS SHOWN IN FIG.1.

NO.	MATERIAL	FINISH, REMARKS	NO.	MATERIAL	FINISH, REMARKS
3	BRASS	TIN-PLATING	2	PHOSPHOR BRONZE	
1	PPS	LIGHT BROWN (UL94V-0)			
CODE NO. (OLD)		CL	CONTACT AREA: GOLD 0.2μm min.		
			LEAD AREA: TIN-PLATING 2μm min.		
			UNDER PLATING: NICKEL 2μm min.		
DRAWN		A. SUZUKAWA	DESIGNED		K. Ogawa
DATE		06.02.08	CHECKED		H. Okamura
			APPROVED		H. Okawa
			RELEASED		
DRAWING NO.		EDC3-082403-21	PART NO.		FX2-52P-1.27SVL(71)
SCALE		2 : 1	CODE NO.		CL572-2054-5-71
UNITS		mm			

TO	
PCK	