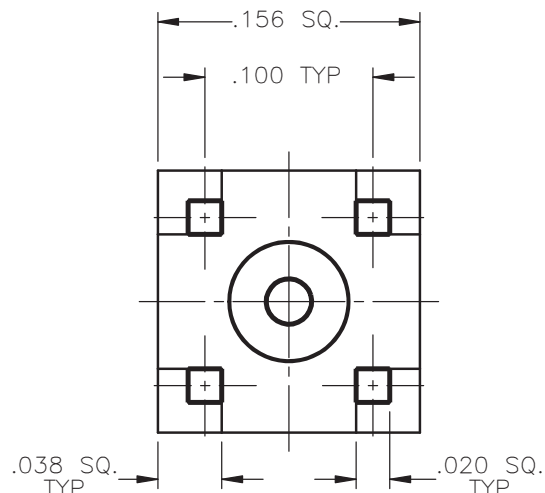
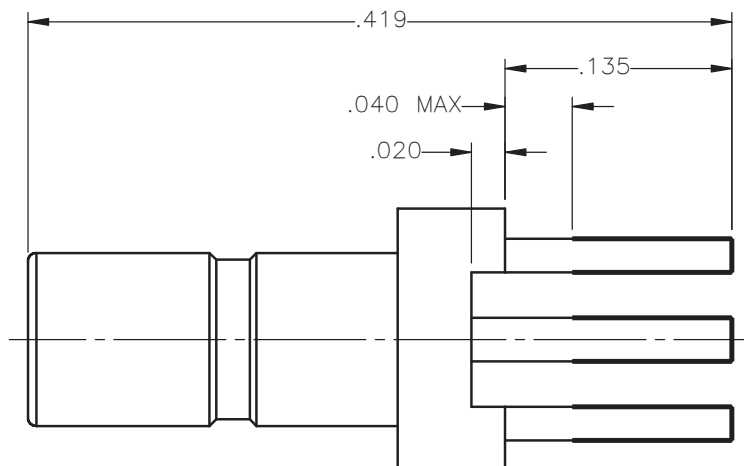


REVISIONS			
REV.	DESCRIPTION	DATE	APPROVED
A	INITIAL RELEASE	12/13/12	D.N.






#### NOTES:

#### MATERIALS:

1. BODY = BRASS PER ASTM B16, ALLOY C36000, TEMPER H02.
2. INSULATOR = VIRGIN WHITE TEFLON PER ASTM D1710, GRADE 1, TYPE I, CLASS "B".
3. CONTACT = BERYLLIUM COPPER PER ASTM B196, ALLOY C17300, TEMPER TD04.

#### FINISHES:

1. BODY = GOLD PLATE PER MIL-G-45204, TYPE II, CLASS 0, GRADE C, OVER .00010 TO .00020 COPPER STRIKE PER MIL-C-14550.
2. CONTACT = GOLD PLATE PER MIL-G-45204, TYPE II, CLASS 1, GRADE C, OVER .00010 TO .00020 STRESS FREE SULFAMATE NICKEL PER QQ-N-290.
3. TIN DIP = SOLDER COMPOSITION IS Sn63 TP, THICKNESS IS .0002 TO .0005 INCHES.

UNLESS OTHERWISE SPECIFIED DIMENSIONS ARE IN INCHES TOLERANCES ON		DWN: D.N.	DATE 12/13/12	<div><b>Property of Radiall</b> This document cannot be reproduced or communicated to a third party without prior written permission of RADIALL.</div> <div></div>			
		CHKD: J.S.	DATE 12/13/12				
DECIMAL	ANGLE	APVD: J.M.	DATE 12/13/12	SSMB STRAIGHT MALE P.C.B. MOUNT RECEPTACLE			
REFERENCE:		MATERIALS & FINISHES:		SIZE A	FSCM NO. 19505	DWG NO. 7209-1511-040	REV A
ORIGINATED: D.N. DATE: 12/13/12		SEE NOTES		SCALE 9:1	THIRD ANGLE PROJECTION		SHEET 1 OF 1

7209-1511-040

# Mouser Electronics

Authorized Distributor

Click to View Pricing, Inventory, Delivery & Lifecycle Information:

Radial:

[7209-1511-040](#)