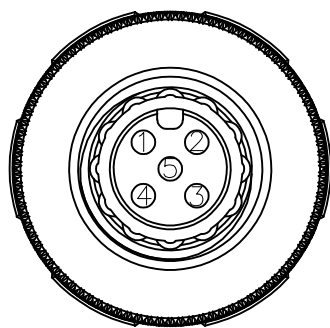
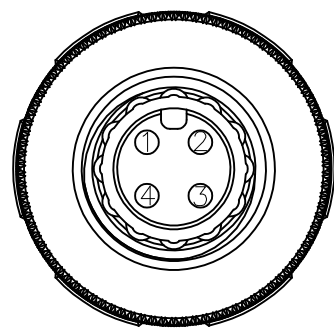
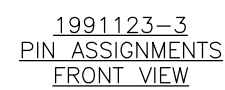
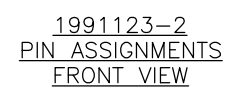
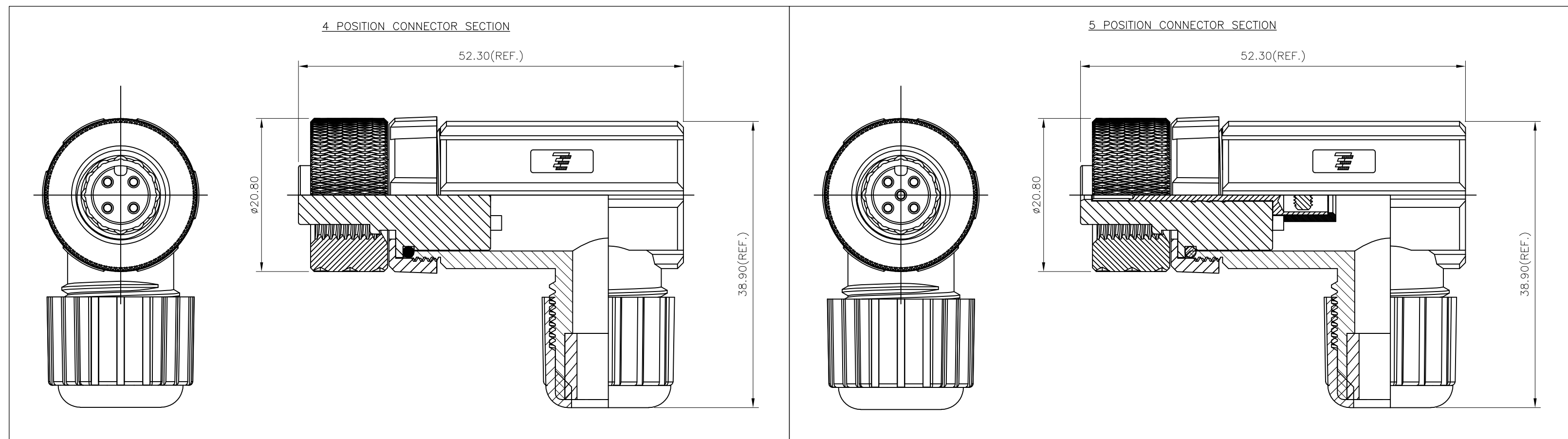
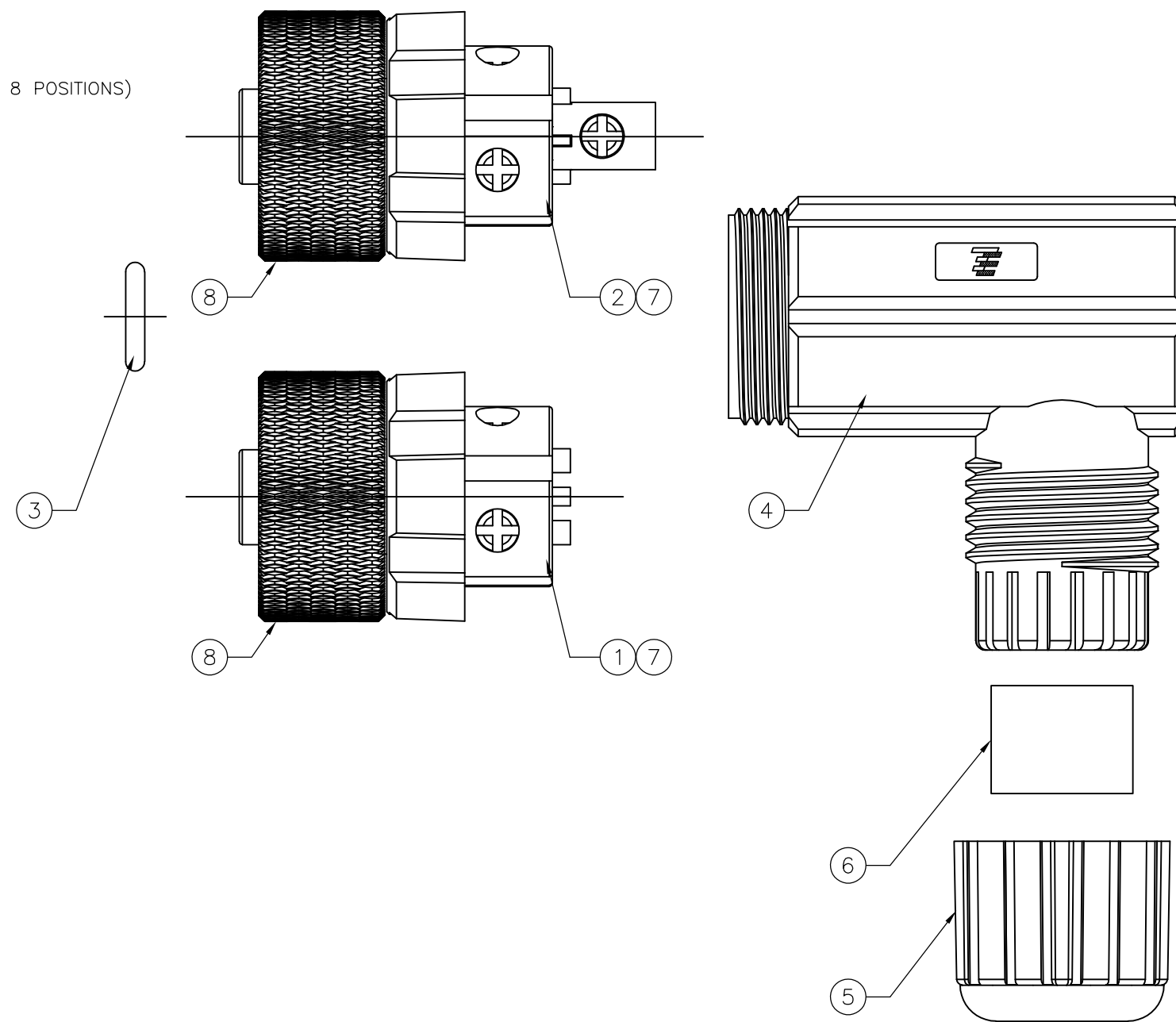

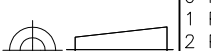


NOTES:

1. ELECTRICAL DATA: CONTACT RESISTANCE: 10 mOhm MAX  
INSULATION RESISTANCE: 100 MOhm MIN at 500VDC  
CURRENT RATING: 5 AMPS (FOR 3, 4 AND 5 POSITIONS) AND 2 AMPS (FOR 8 POSITIONS)  
BREAKDOWN VOLTAGE: 500 VAC MIN PER MINUTE
2. ENVIRONMENTAL: OPERATING TEMPERATURE: -25°C TO +90°C  
SEALING REQUIREMENTS: IP67
3. PACKAGING: 107-3334
4. SEAL FOR CABLE OD: Ø4.5mm - Ø6.0mm
5. FOR TECHNICAL DATA REFER TO YOUR LOCAL TYCO ELECTRONICS SALES OFFICE.
6. ALL DIMENSIONS ARE FOR NOMINAL REFERENCE ONLY UNLESS OTHERWISE STATED.



THIS DRAWING IS A CONTROLLED DOCUMENT.		DWN J.SANDWELL 23NOV2007		 Tyco Electronics Corporation Bideford, UK, EX39 4HE		REV OF THIS DRAWING	
DIMENSIONS: mm		TOLERANCES UNLESS OTHERWISE SPECIFIED 0 PLC ± 1 PLC ± - 2 PLC ± - 3 PLC ± - 4 PLC ± - ANGLES ± -		CHK F.WHEELER-KING 23NOV2007 APVD F.WHEELER-KING 23NOV2007 NAME M12 FIELD SERVICEABLE CONNECTOR, SCREW FIXING RIGHT ANGLE FEMALE -		RESTRICTED TO	
		PRODUCT SPEC -		SIZE		CAGE CODE	DRAWING NO
MATERIAL -		APPLICATION SPEC -		A2		00779	©-1991123
FINISH -		WEIGHT -		SCALE		NTS	SHEET 1 of 1
CUSTOMER DRAWING				REV		A	

# Mouser Electronics

Authorized Distributor

Click to View Pricing, Inventory, Delivery & Lifecycle Information:

[TE Connectivity:](#)

[1991123-2](#)