

This drawing involves proprietary design rights of Tyco Electronics Corporation, and all design, manufacture, reproduction, use and sale rights regarding the same are expressly reserved. It is submitted for a specific purpose and the recipient by accepting this drawing, assumes custody and control and agrees to take reasonable precautions; (a) that this drawing will not be copied and reproduced, in whole or in part, or its contents revealed in any manner, or to any person except to meet the purpose for which it was delivered and (b) that any special features peculiar to this design will not be incorporated in other projects without the expressed written permission of Tyco Electronics Corporation.

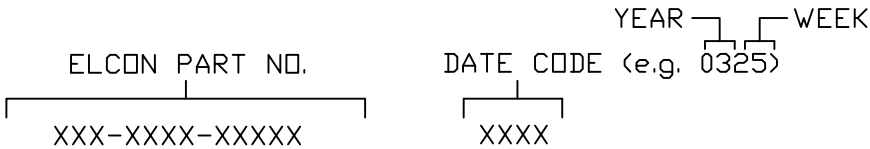
REVISIONS			
EC	REV	DESCRIPTION	DATE
0S1Q-0064-05	A	NEW RELEASE	03/07/05

NOTES: UNLESS OTHERWISE SPECIFIED;

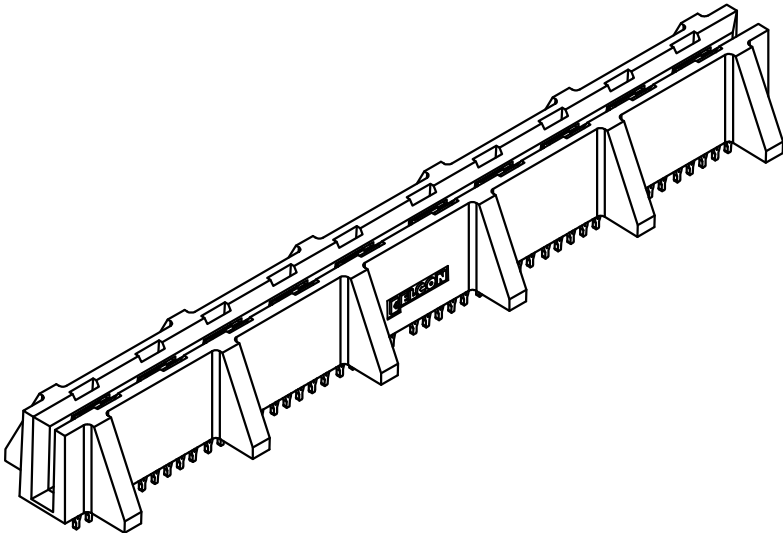
1. PART NUMBER CHANGES AND OR DESIGN CHANGES AFFECTING ITEM INTERCHANGEABILITY REQUIRE PRIOR ELCON APPROVAL AND AUTHORIZATION BY REVISION TO THIS DRAWING.
2. MATERIALS:
- INSULATORS: THERMOPLASTIC, GLASS REINFORCED, COLOR-BLACK, UL94V-0 FLAMMABILITY RATED.
- SOLDER SIGNAL PIN: BRASS ALLOY.
- POWER CONTACTS: PHOSPHOR-BRONZE ALLOY, COPPER ALLOY.
- CROWN BANDS: BERYLLIUM-COPPER ALLOY.
3. FINISHES:
- CONTACTS: GOLD PLATED PER MIL-G-45204 TYPE II, CLASS 0, .000030" MIN. THK, OVER NICKEL PER QQ-N-290, CLASS 2, .000040" MIN. THK. SOLDER TAILS, TIN/LEAD (90/10) PER ASTM B 545, .000100" MIN. THICK.

4 SOCKET CONNECTORS ACCEPT 1.60 [1.062"] ±10% THK PC BOARD.

5 ITEMS PROVIDED TO THIS SPECIFICATION TO BE PERMANENTLY IDENTIFIED PER THE FOLLOWING IDENTIFIER:



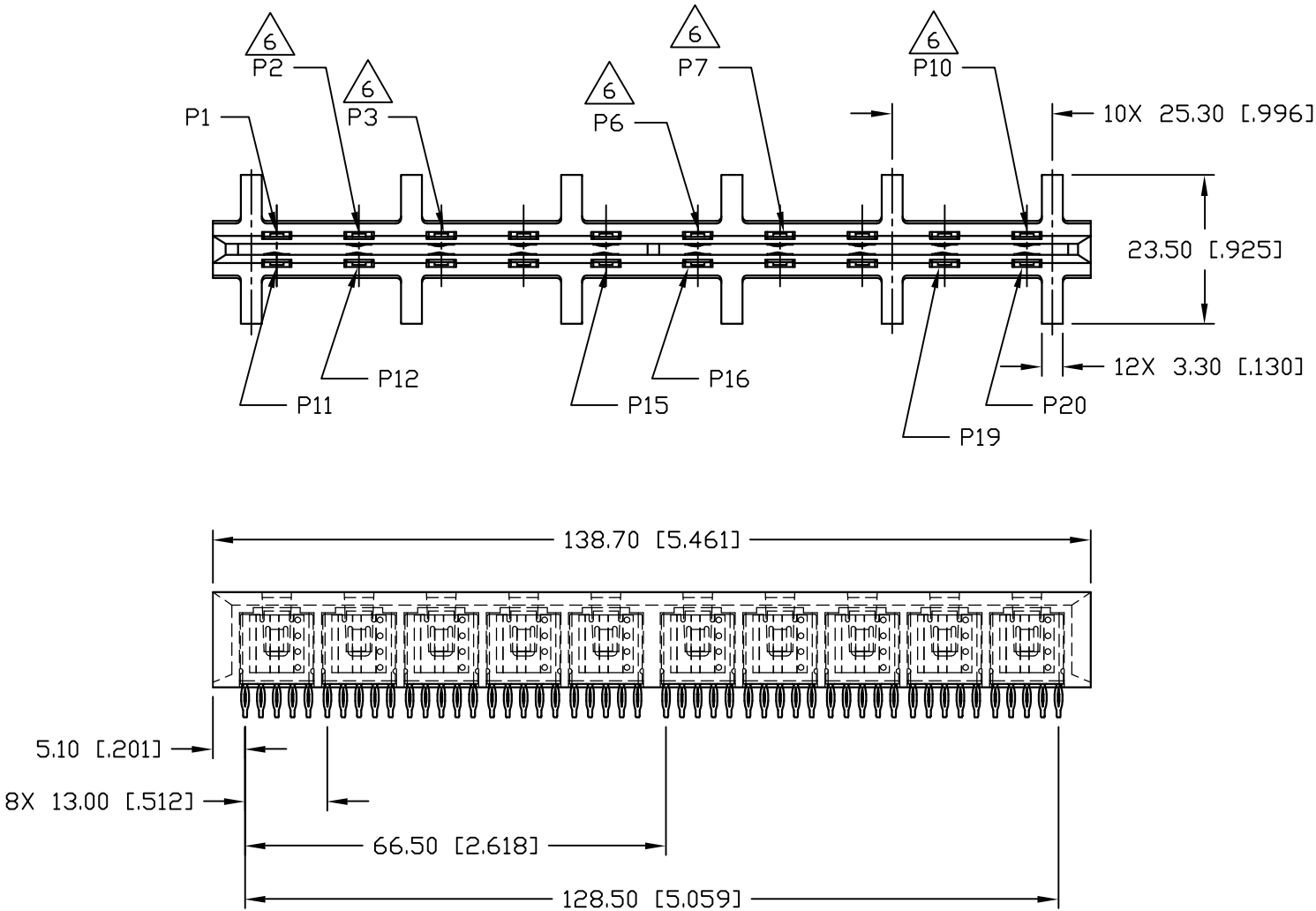
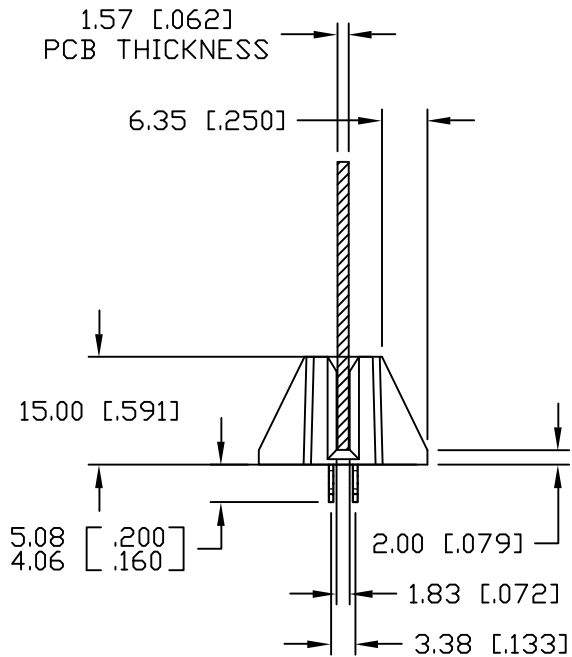
6 POSITION P2, P3, P6, P7, AND P10 ARE UNPOPULATED.



<div>← MM INCH</div> <div></div> <div>THIRD ANGLE PROJECTION</div> <div>UNLESS OTHERWISE SPECIFIED DIMENSIONS ARE IN METRIC [INCHES]</div> <div>TOLERANCES</div> <div>ANGLES ± .5°</div> <div>DECIMALS</div> <div>.XX ± .25 [.010]</div> <div>.X ± .5 [.020]</div>	DRAWN S. WAN	DATE 11/29/04	<div> Tyco Electronics Corporation Menlo Park, Ca 94025</div> <div></div>		
	CHECKED		TITLE CONNECTOR, SOCKET SIDE ENTRY, CROWN EDGE PN: 284-0542-01302		
	APPROVED				
	APPROVED D. CHAU	03/07/05			
	DCA APPROVED M. ALIM	03/14/05	SIZE B	DWG NUMBER C = 1766611	REV. A
ACAD FILE NUMBER C1766611A.DWG				DWG SCALE 1=1	SH 1 OF 3

This drawing involves proprietary design rights of Tyco Electronics Corporation, and all design, manufacture, reproduction, use and sale rights regarding the same are expressly reserved. It is submitted for a specific purpose and the recipient by accepting this drawing, assumes custody and control and agrees to take reasonable precautions; (a) that this drawing will not be copied and reproduced, in whole or in part, or its contents revealed in any manner, or to any person except to meet the purpose for which it was delivered and (b) that any special features peculiar to this design will not be incorporated in other projects without the expressed written permission of Tyco Electronics Corporation.

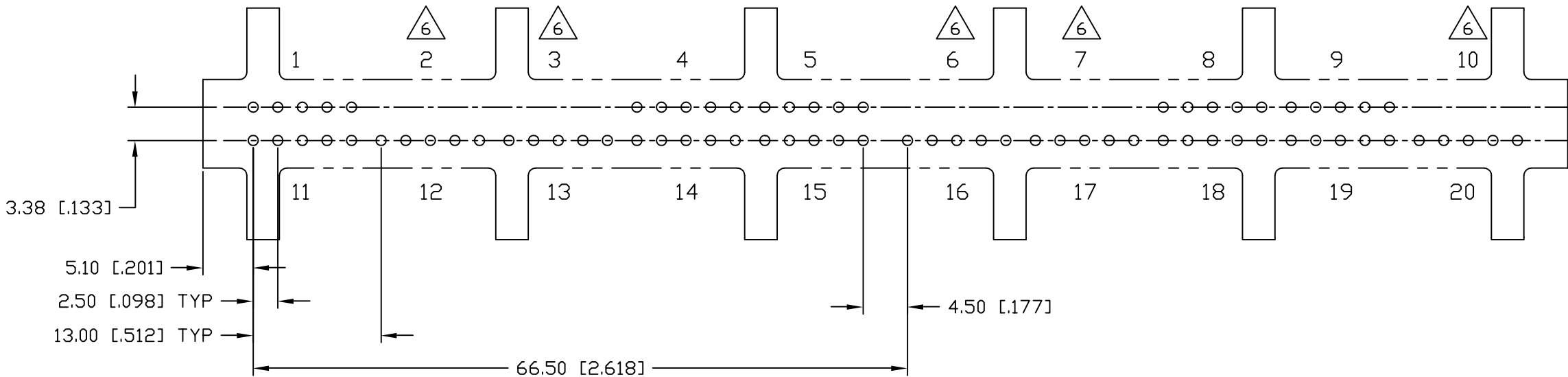
REVISIONS			
EC	REV	DESCRIPTION	DATE
		SEE SHEET 1	



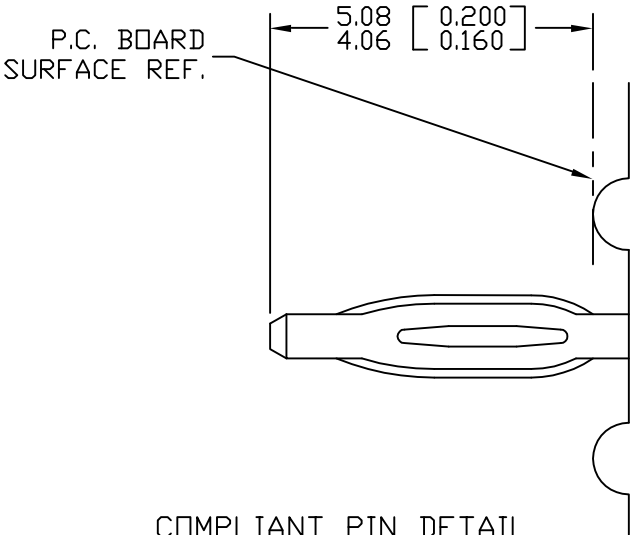
<div><div><div>← MM INCH</div><div>OR MM [INCH]</div><div></div><div>THIRD ANGLE PROJECTION</div></div><div>UNLESS OTHERWISE SPECIFIED DIMENSIONS ARE IN METRIC [INCHES]</div><div>TOLERANCES</div><div>ANGLES ± .5°</div><div>DECIMALS</div><div>.XX ± .25 [.010]</div><div>.X ± .5 [.020]</div></div>	DRAWN S. WAN	DATE 11/29/04	<div><div><div>tyco</div><div>Electronics</div></div><div>Tyco Electronics Corporation Menlo Park, Ca 94025</div><div>ELCON</div></div>		
	CHECKED		TITLE		
	APPROVED		CONNECTOR, SOCKET SIDE ENTRY, CROWN EDGE PN: 284-0542-01302		
	APPROVED D. CHAU	03/07/05	SIZE B	DWG NUMBER C = 1766611	REV. A
	DCA APPROVED M. ALIM	03/14/05			
ACAD FILE NUMBER		C1766611A.DWG		DWG SCALE 1 = 1	SH 2 OF 3

This drawing involves proprietary design rights of Tyco Electronics Corporation, and all design, manufacture, reproduction, use and sale rights regarding the same are expressly reserved. It is submitted for a specific purpose and the recipient by accepting this drawing, assumes custody and control and agrees to take reasonable precautions; (a) that this drawing will not be copied and reproduced, in whole or in part, or its contents revealed in any manner, or to any person except to meet the purpose for which it was delivered and (b) that any special features peculiar to this design will not be incorporated in other projects without the expressed written permission of Tyco Electronics Corporation.

REVISIONS			
EC	REV	DESCRIPTION	DATE
		SEE SHEET 1	SEE SHEET 1



SUGGESTED PCB LAYOUT
SCALE 2=1



COMPLIANT PIN DETAIL
SCALE: 10 : 1
INSERTION/EXTRACTION FORCES
MAXIMUM PUSH IN: 133.3N PER PIN
[30 LBS]
MINIMUM PUSH OUT: 44.4N PER PIN
[10 LBS]

RECOMMENDED PRINTED CIRCUIT HOLE

FINISHED HOLE: $\varnothing 1.02$ [0.040] \pm .08 [0.003]
DRILLED HOLE: $\varnothing 1.15$ [0.0453] \pm .013 [0.0005]
COPPER PLATE: .025 [0.0010] MINIMUM (PER SURFACE)
TIN PLATE: .008 [0.0003] MINIMUM (PER SURFACE)

<div>THIRD ANGLE PROJECTION</div> <div>UNLESS OTHERWISE SPECIFIED DIMENSIONS ARE IN METRIC [INCHES]</div> <div>TOLERANCES</div> <div>ANGLES \pm .5°</div> <div>DECIMALS</div> <div>.XX \pm .25 [0.010]</div> <div>.X \pm .5 [0.020]</div>	DRAWN S. WAN	DATE 11/29/04	<div>tyco Tyco Electronics Corporation Electronics Menlo Park, Ca 94025</div> <div>ELCON</div>	
	CHECKED			
	APPROVED		TITLE USER INFORMATION COMPLIANT TAIL TERMINATION AND PCB LAYOUT	
	APPROVED			
	D. CHAU	03/07/05	SIZE B	DWG NUMBER C = 1766611
	M. ALIM	03/14/05	REV. A	
ACAD FILE NUMBER C1766611A.DWG			DWG SCALE 1=1	SH 3 OF 3

Mouser Electronics

Authorized Distributor

Click to View Pricing, Inventory, Delivery & Lifecycle Information:

[TE Connectivity:](#)

[1766611-1](#)