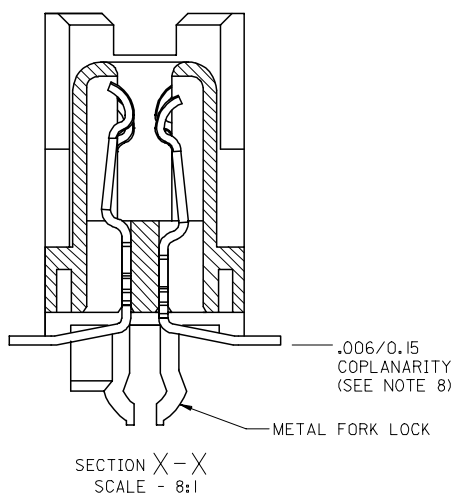
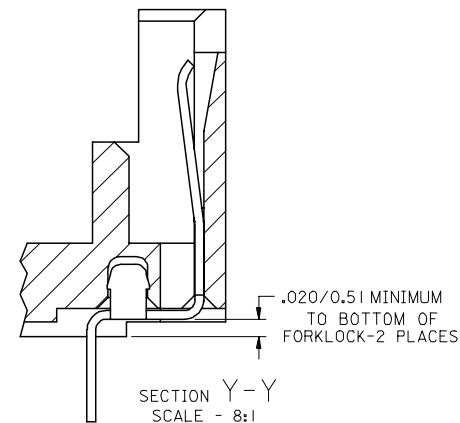
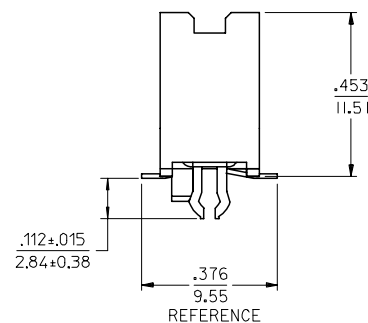
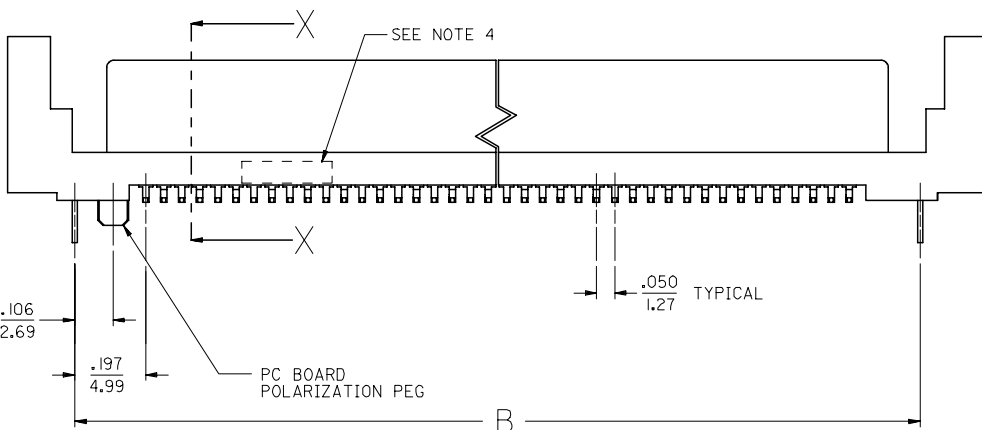
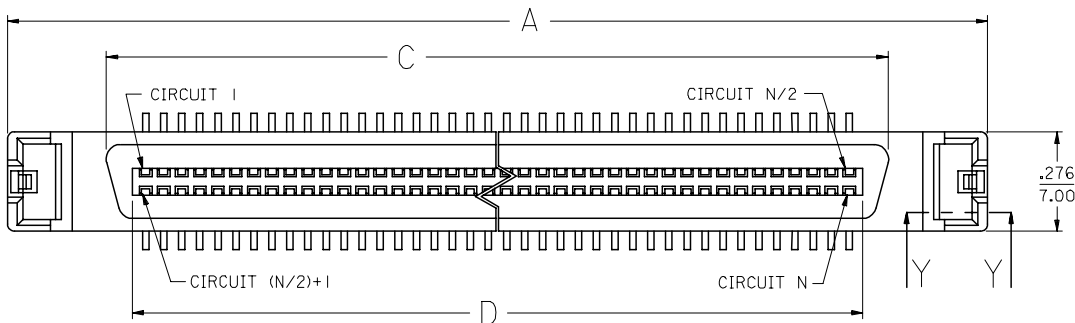


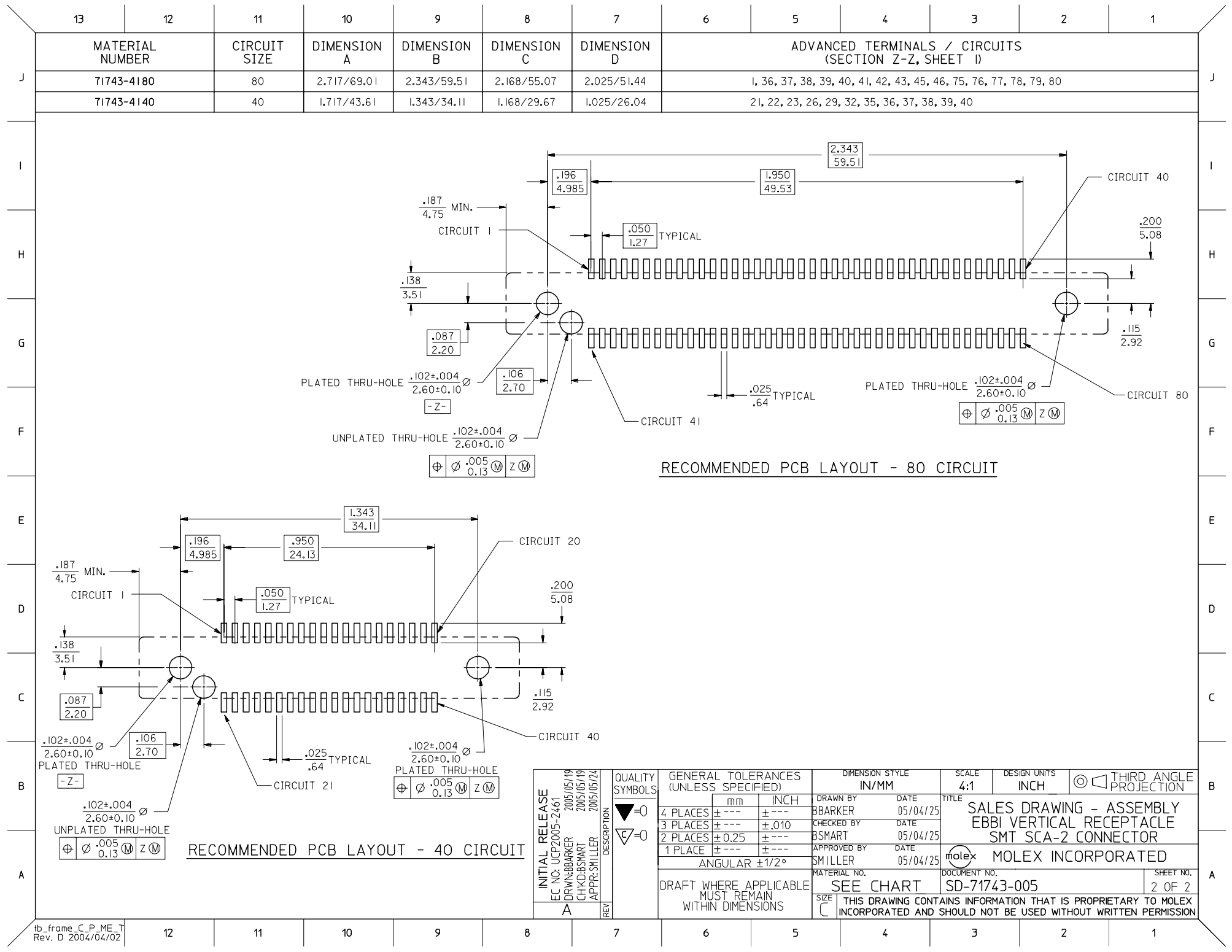
13 12 11 10 9 8 7 6 5 4 3 2 1

- NOTES: 1. MATERIAL:
HOUSING: 1.R. COMPATIBLE POLYMER, GLASS FILLED, UL 94 V 0, BLACK
TERMINALS: COPPER ALLOY
BOARDLOCK: COPPER ALLOY
2. FINISH:
TERMINALS: 30 MICROINCHES / 0.76 MICROMETERS GOLD IN CONTACT AREA
100 MICROINCHES / 2.54 MICROMETERS TIN IN TAIL AREA
NICKEL UNDERPLATE OVERALL.
ESD BOARDLOCK: TIN OVER NICKEL OVERALL.
3. PRODUCT SPECIFICATION: PS-73826-0000
4. FOUR DIGIT DATE CODE IN THIS LOCATION (WK YR).
5. CONTACT GAP WILL ACCOMMODATE MATING CONNECTOR OF:
.063+/-0.003 / 1.60+/-0.08
6. PACKAGE PER SPECIFICATION PK-70873-5025.
7. CIRCUIT NUMBERS 1,36 THRU 43,45,46, AND 75 THRU 80,
ARE ADVANCED (LONG) TERMINALS FOR SEQUENTIAL MATING.
8. COPLANARITY TO BE MEASURED USING FIXTURE # 71743-9001 OR EQUIVALENT.
MEASUREMENT TO BE TAKEN AT 50X MAGNIFICATION.
COPLANARITY IS THE DISTANCE BETWEEN THE SEATING PLANE AND THE LOWEST
POINT ON THE SMT TAIL THAT IS FARTHEST FROM THE SEATING PLANE.
FIXTURING TO BE SUCH THAT ALL TAILS ARE OVER THE SEATING PLANE.





<div>INITIAL RELEASE</div> <div>EC NO: UCP2005-2461</div> <div>DRWN:BBARKER 2005/05/19</div> <div>CHKD:BSMART 2005/05/19</div> <div>APPR:SMILLER 2005/05/24</div>	<div>DESCRIPTION</div>	<div>QUALITY SYMBOLS</div> <div>▽=0</div> <div>▽=0</div>	GENERAL TOLERANCES (UNLESS SPECIFIED)		DIMENSION STYLE		SCALE	DESIGN UNITS	<div>THIRD ANGLE PROJECTION</div>	<div>SALES DRAWING - ASSEMBLY</div> <div>EBBI VERTICAL RECEPTACLE</div> <div>SMT SCA-2 CONNECTOR</div>	<div>MOLEX INCORPORATED</div>	<div>SHEET NO.</div> <div>1 OF 2</div>	
					IN/MM		1:1	INCH					
							TITLE						
<div>CH</div>	<div>REV</div>				DRAWN BY		DATE						
					BBARKER		05/04/25						
					CHECKED BY		DATE						
					BSMART		05/04/25						
			1 PLACE		APPROVED BY		DATE						
			±0.25 ±---		SMILLER		05/04/25						
			ANGULAR		MATERIAL NO.		DOCUMENT NO.						
			±1/2°		SEE CHART		SD-71743-005						
			DRAFT WHERE APPLICABLE		SIZE								
			MUST REMAIN		C								
			WITHIN DIMENSIONS		THIS DRAWING CONTAINS INFORMATION THAT IS PROPRIETARY TO MOLEX								
					INCORPORATED AND SHOULD NOT BE USED WITHOUT WRITTEN PERMISSION								

12 11 10 9 8 7 6 5 4 3 2 1



RECOMMENDED PCB LAYOUT - 80 CIRCUIT

RECOMMENDED PCB LAYOUT - 40 CIRCUIT

INITIAL RELEASE EC NO: UCP2005-2461 DRAWN BY: BBARKER 2005/05/19 CHKD BY: SMART 2005/05/19 APPR: SMILLER 2005/05/24 REV	DESCRIPTION	QUALITY SYMBOLS =0 =0	GENERAL TOLERANCES (UNLESS SPECIFIED)		DIMENSION STYLE IN/MM		SCALE 4:1	DESIGN UNITS INCH	 THIRD ANGLE PROJECTION				
				mm	INCH	DRAWN BY BBARKER	DATE 05/04/25	TITLE SALES DRAWING - ASSEMBLY EBBI VERTICAL RECEPTACLE SMT SCA-2 CONNECTOR					
			4 PLACES	± ---	± ---	CHECKED BY BSMART	DATE 05/04/25						
			3 PLACES	± ---	± .010	APPROVED BY SMILLER	DATE 05/04/25	 MOLEX INCORPORATED					
			2 PLACES	± 0.25	± ---	MATERIAL NO. SEE CHART					DOCUMENT NO. SD-71743-005		SHEET NO. 2 OF 2
			1 PLACE	± ---	± ---								
			ANGULAR ±1/2°			DRAFT WHERE APPLICABLE MUST REMAIN WITHIN DIMENSIONS							
			SIZE C		THIS DRAWING CONTAINS INFORMATION THAT IS PROPRIETARY TO MOLEX INCORPORATED AND SHOULD NOT BE USED WITHOUT WRITTEN PERMISSION								

Mouser Electronics

Authorized Distributor

Click to View Pricing, Inventory, Delivery & Lifecycle Information:

Molex:

71743-4180