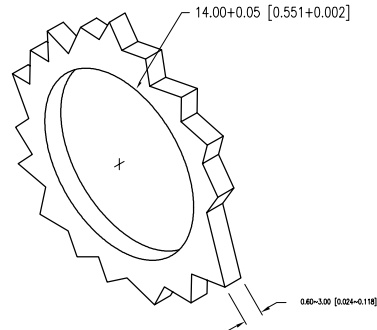
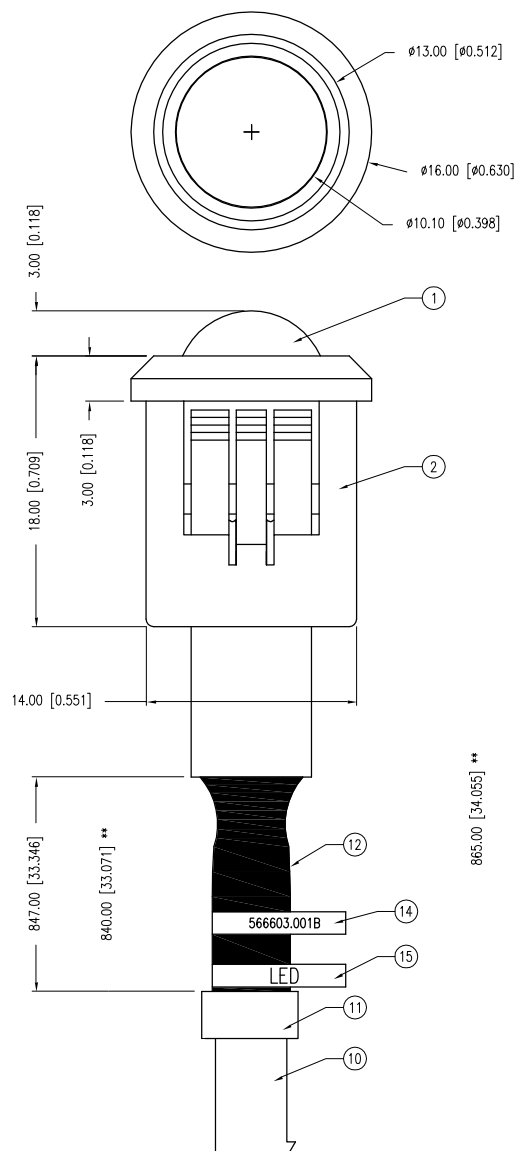


PART NUMBER	SSI-LXH1090SOD7091	REV.	E
DATE	E.C.N. NUMBER AND REVISION COMMENTS		REV.
6.19.06	E.C.N. #11335		A
1.09.07	E.C.N. #11384		B
6.24.08	E.C.N. #11512		C
8.20.08	E.C.N. #11528		D
09.23.10	E.C.N. #11661		E

ELECTRO-OPTICAL CHARACTERISTICS  $T_A=25^{\circ}\text{C}$   $I_f=20\text{mA}$ 

PARAMETER	MIN	TYP	MAX	UNITS	TEST COND
PEAK WAVELENGTH		610		nm	
FORWARD VOLTAGE		12.0		$V_f$	
REVERSE VOLTAGE	5.0			$V_r$	$I_r=100\mu\text{A}$
AXIAL INTENSITY		100		mcd	$I_f=20\text{mA}$
VIEWING ANGLE		60		2x theta	
EMITTED COLOR:	ORANGE				
EPOXY LENS FINISH:	ORANGE DIFFUSED				

LIMITS OF SAFE OPERATION AT  $25^{\circ}\text{C}$ 

PARAMETER	MAX	UNITS
PEAK FORWARD CURRENT*	100	mA
STEADY CURRENT	30	mA
POWER DISSIPATION	105	mW
DERATE FROM $25^{\circ}\text{C}$	-1.2	mW/ $^{\circ}\text{C}$
OPERATING, STORAGE TEMP.	-40 TO +85	$^{\circ}\text{C}$

\*  $t < 10\mu\text{s}$ 

CAUTION: PRESSURE SENSITIVE ASSEMBLY  
AVOID APPLYING PRESSURE TO LED  
DURING PANEL ASSEMBLY.

## [A] NOTES:

- SSL-LX100133SOD LED, TRIM ANODE LEAD TO 5mm, DO NOT TRIM CATHODE LEAD.
- SSH-RTF1090 HOLDER.
- ANODE LEAD: LXP-WST24RTOC, 24 AWG STRANDED, RED INSULATION, CUT 850mm LONG, STRIP 3mm END.
- CATHODE LEAD: LXP-WST24BLTOC, 24 AWG STRANDED, BLACK INSULATION, CUT 850mm LONG, STRIP 3mm END.
- 510Ω 1/2W RESISTOR, TRIM LEADS 18mm END TO END.
- 723.9mm, 3/16" BLACK HEAT SHRINK TUBING.
- 30.1mm 1/8" BLACK HEAT SHRINK TUBING.
- UV EPOXY TO RETAIN LED IN HOLDER.
- 146mm LONG 1/4" BLACK HEAT SHRINK.
- AMP CONNECTOR# 172233-1.
- AMP CRIMP# 170359-3. (2 PCS.)
- SHRINK ITEMS 6 AND 9 IN THIS AREA ONLY.
- 38.1mm, 3/16" BLACK HEAT SHRINK TUBING.
- 1/4" x 1" FLAG LABEL (566603-001B) AT CENTER OF CABLE.
- 1/4" x 1" FLAG LABEL (LED) AT END OF CABLE ABOVE AMP CONNECTOR
- QUALITY CHECKED DIMENSIONS (ON 7.12.10)

\*UNLESS OTHERWISE SPECIFIED TOLERANCES PER DECIMAL PRECISION ARE: X=±1 (±0.039), X.X=±0.5 (±0.020), X.XX=±0.25 (±0.010), X.XXX=±0.127 (±0.005). LEAD SIZE=±0.05 (±0.002), LEAD LENGTH=±0.75 (±0.030). MIN= +DECIMAL PRECISION MAX.= +0.00 -DECIMAL PRECISION



290 E. HELEN ROAD  
PALATINE, IL 60067-6976  
PHONE: +1.847.359.2790  
FAX: +1.847.359.6538  
WEB: WWW.LUMEX.COM

T-10mm 610nm AlInGaP ORANGE LED PANEL INDICATOR, ORANGE DIFFUSED LENS, 12 VOLTS.

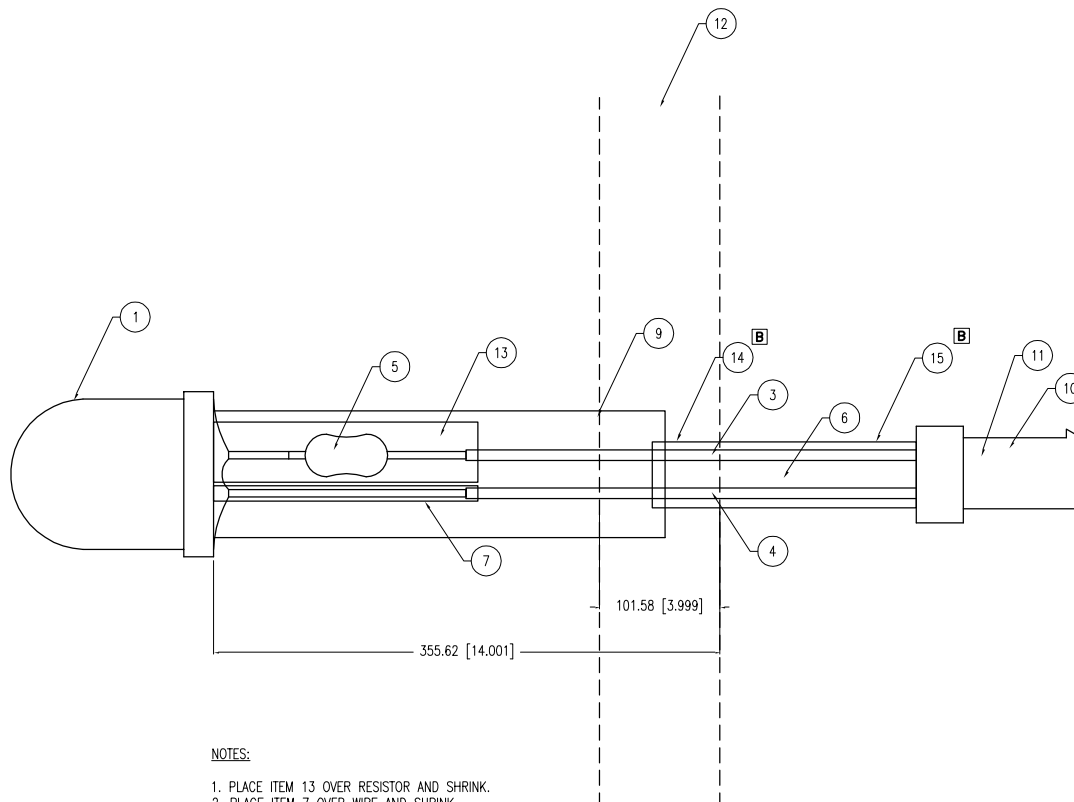
\*\*THE SPECIFICATIONS MAY CHANGE AT ANY TIME WITHOUT NOTICE DUE TO NEW MATERIALS OR PRODUCT IMPROVEMENT.\*\*

CONFIDENTIAL INFORMATION  
THE INFORMATION CONTAINED IN THIS DOCUMENT IS THE PROPERTY OF LUMEX INC. EXCEPT AS SPECIFICALLY AUTHORIZED IN WRITING BY LUMEX INC., THE HOLDER OF THIS DOCUMENT SHALL KEEP ALL INFORMATION CONTAINED HEREIN CONFIDENTIAL AND SHALL PROTECT SAME IN WHOLE OR IN PART FROM DISCLOSURE AND DISSEMINATION TO ALL THIRD PARTIES.

DATE:	07.12.10	DRAWN BY:	JN
PAGE:	1 OF 2	CHKD BY:	MP
SCALE:	NTS	APRVD BY:	JD
UNIT:	mm [INCH]		(P)

UNCONTROLLED DOCUMENT

PART NUMBER	SSI-LXH1090SOD7091	REV.	E
DATE	E.C.N. NUMBER AND REVISION COMMENTS		REV.
6.19.06	E.C.N. #11335		A
1.09.07	E.C.N. #11384		B
6.24.08	E.C.N. #11512		C
8.20.08	E.C.N. #11528		D
09.23.10	E.C.N. #11661		E



## NOTES:

1. PLACE ITEM 13 OVER RESISTOR AND SHRINK.
2. PLACE ITEM 7 OVER WIRE AND SHRINK.

## NOTES:

1. SSL-LX100133SOD LED, TRIM ANODE LEAD TO 5mm, DO NOT TRIM CATHODE LEAD.
2. SSH-RTF1090 HOLDER.
3. ANODE LEAD: LXP-WST24RDT0C, 24 AWG STRANDED, RED INSULATION, CUT 850mm LONG, STRIP 3mm END.
4. CATHODE LEAD: LXP-WST24BLT0C, 24 AWG STRANDED, BLACK INSULATION, CUT 850mm LONG, STRIP 3mm END.
5. 510Ω 1/2W RESISTOR, TRIM LEADS 18mm END TO END.
6. 723.9mm, 3/16" BLACK HEAT SHRINK TUBING.
7. 30.1mm 1/8" BLACK HEAT SHRINK TUBING.
8. UV EPOXY TO RETAIN LED IN HOLDER.
9. 146mm LONG 1/4" BLACK HEAT SHRINK.
10. AMP CONNECTOR# 172233-1.
11. AMP CRIMP# 170359-3. (2 PCS.)
12. SHRINK ITEMS 6 AND 9 IN THIS AREA ONLY.
13. 38.1mm, 3/16" BLACK HEAT SHRINK TUBING.

\*UNLESS OTHERWISE SPECIFIED TOLERANCES PER DECIMAL PRECISION ARE: X=±1 (±0.039), X.X=±0.5 (±0.020), X.XX=±0.25 (±0.010), X.XXX=±0.127 (±0.005). LEAD SIZE=±0.05 (±0.002), LEAD LENGTH=±0.75 (±0.030). MIN= +DECIMAL PRECISION -0.00 MAX.= +0.00 -DECIMAL PRECISION



290 E. HELEN ROAD  
PALATINE, IL 60067-6976  
PHONE: +1.847.359.2790  
FAX: +1.847.359.6538  
WEB: WWW.LUMEX.COM

T-10mm 610nm AlInGaP ORANGE LED PANEL INDICATOR, ORANGE DIFFUSED LENS, 12 VOLTS.

\*\*THE SPECIFICATIONS MAY CHANGE AT ANY TIME WITHOUT NOTICE DUE TO NEW MATERIALS OR PRODUCT IMPROVEMENT.\*\*

CONFIDENTIAL INFORMATION  
THE INFORMATION CONTAINED IN THIS DOCUMENT IS THE PROPERTY OF LUMEX INC. EXCEPT AS SPECIFICALLY AUTHORIZED IN WRITING BY LUMEX INC., THE HOLDER OF THIS DOCUMENT SHALL KEEP ALL INFORMATION CONTAINED HEREIN CONFIDENTIAL AND SHALL PROTECT SAME IN WHOLE OR IN PART FROM DISCLOSURE AND DISSEMINATION TO ALL THIRD PARTIES.

DATE: 07.12.10	DRAWN BY: JN
PAGE: 2 OF 2	CHKD BY: MP
SCALE: NTS	APRVD BY: JD
UNIT: mm [INCH]	(P)

# Mouser Electronics

Authorized Distributor

Click to View Pricing, Inventory, Delivery & Lifecycle Information:

Lumex:

[SSI-LXH1090SOD7091](#)