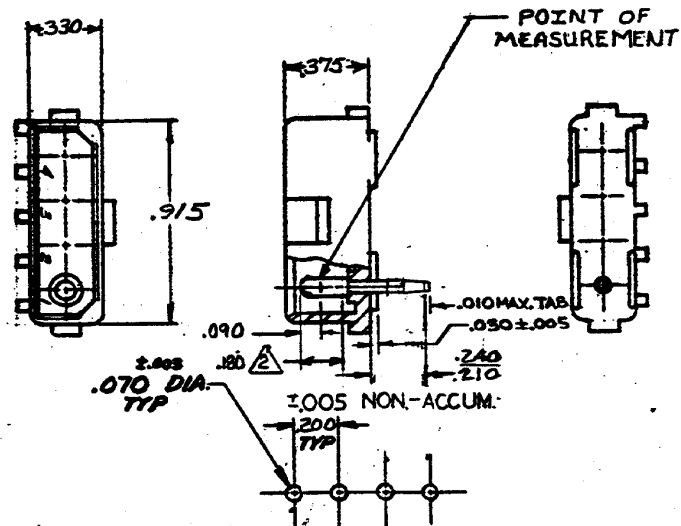


5

WAS P-73-6103



RECOMMENDED LAYOUT FOR  
.125 THICK P.C. BOARD

- PARTS COMPLY WITH TE SOLDERABILITY SPEC NO 109-11-3
- △ CONTACT IS PLATED OVERALL WITH .000050 NICKEL, THEN .000030 GOLD OVER CONTACT LENGTH INDICATED AND TIN PLATED ON SOLDER TAIL END.

OBSOLETE		
350544-2	NYLON - NATURAL	COPPER ALLOY - GOLD △
350544-1	NYLON - NATURAL	COPPER ALLOY PRE-TIN
ASSEMBLY NO HSG. MATL & COLOR PIN MATL & FINISH		
DR 5-30-73 G. Eckman	MATERIAL AND FINISH <b>SEE TABLE</b>	<b>TE</b> TE Connectivity CLASS
CHK 4/16/73 JH PCL/TWH/dp	WIRE - RANGE - INSULATION	TYPE
DE J. Humble 9/10/73	TOLERANCE EXCEPT AS NOTED ±.015 ±.100*	SCALE -H-
APP J. Humble 9/10/73	LOC CM B	REV L2
NAME 4 CIRCUIT MATE-N-LOK P.C. BOARD HEADER		

L2	REVISED PER ECR-15-006702	NK	PQ	09/12/015
L3	REVISION RECORD	CR	CHK	DATE

DRAWING IN INCHES. DO NOT SCALE PRINT.



# Mouser Electronics

Authorized Distributor

Click to View Pricing, Inventory, Delivery & Lifecycle Information:

[TE Connectivity:](#)

[350544-1](#)