

NORMINATIVE REF = IEC-61076-4-104

NOTE-2: ONE CENTER PEG FOR HOLD DOWN FORCE

NOTE-3: CODING RECESS FOR 8MM EXTENDED KEYS

NOTE-4: PRODUCT MARKING = FCI + BATCH CODE + PRODUCT NUMBER

FOR 4 MODULE SIZE, ADD CSA LOGO MARKING

NOTE-6: CENTRAL WALL WITH END REAR SUPPORT

NOTE-7: PACKAGING IN TRAY + COVER

IF SUFFIX "P" IS ADDED IN P/N PACKAGING IS IN TRAYS

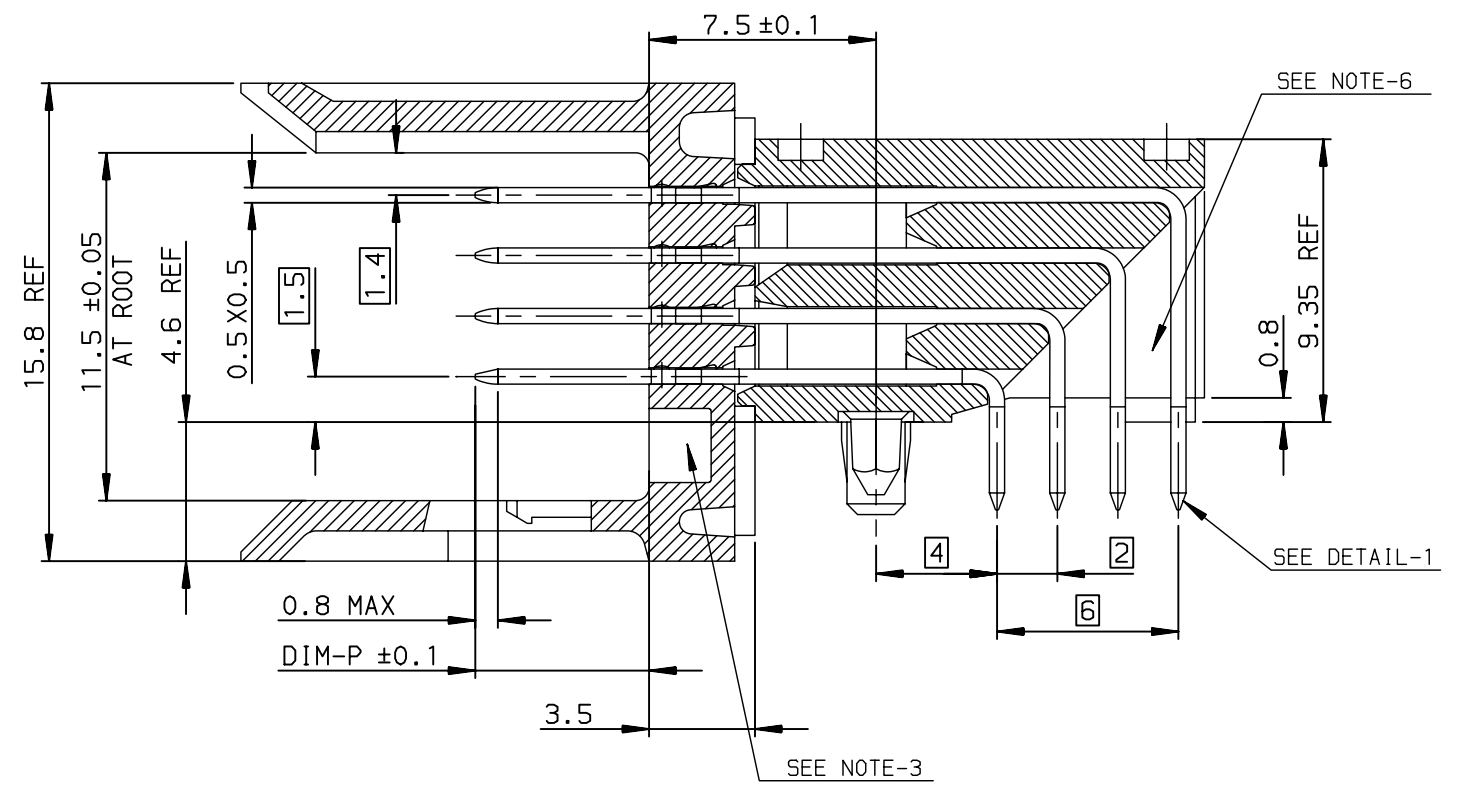
BUT CONNECTOR MARKING IS WITHOUT "P"

EXAMPLE: HM1XXXXXXXXXH6P, MARKED HM1XXXXXXXXXH6

GENERAL CHARACTERISTICS AND ROHS INFORMATIONS:

SEE PRODUCT SPECIFICATION GS-12-446

SECTION-A SCALE: 4/1



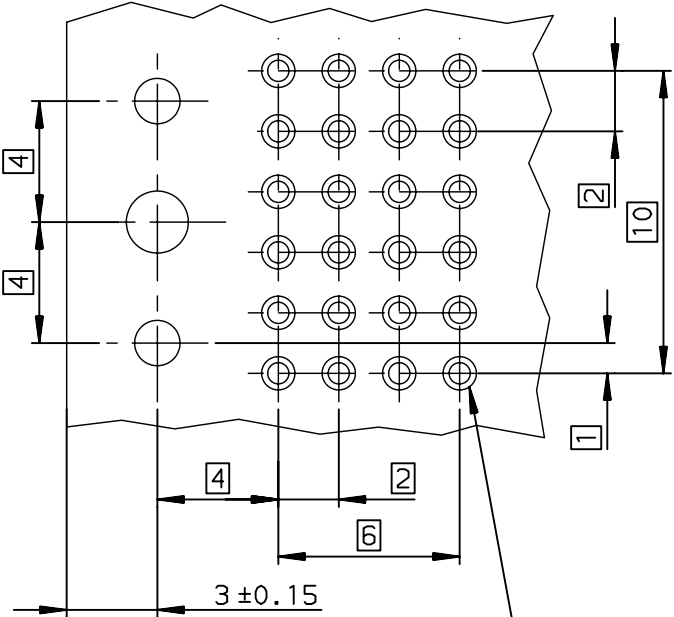
OTHERS INFORMATIONS, SEE DRW C-8626-11212-2/-3/-4

European Views

www.fciconnect.com			surface ISO 1302		tolerance std ISO 406 ISO 1101		projection mm	
TOLERANCES UNLESS OTHERWISE SPECIFIED							size A3	
Dr	CHAMPION	23/08/24	ANGULAR	LINEAR	0.X	±0.1	ECN	LS07-0184
Eng	LENOIR	2003/03/19			0.XX	±0.1		
Chr	LEGARE	2003/03/19			0.XX'	±2°		
Appr	LEGARE	2003/03/19	Product family				Spec ref -	
FCI			METRAL RA HDR WB CONV				dwg no	
4x24CTS-STB-PUSH PEG-SPEC			title				C-8626-11212-1	
catalog no			-				Rev. E	

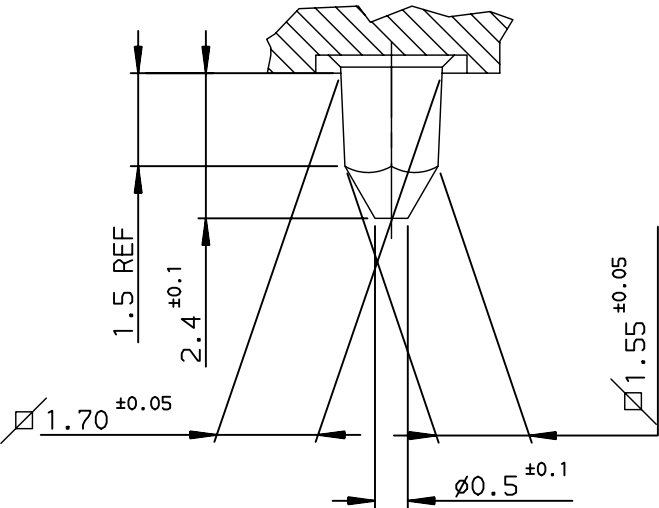
CUSTOMER sheet 1 of 4

RECOMMENDED PCB LAYOUT  
PER 12 MM LENGTH

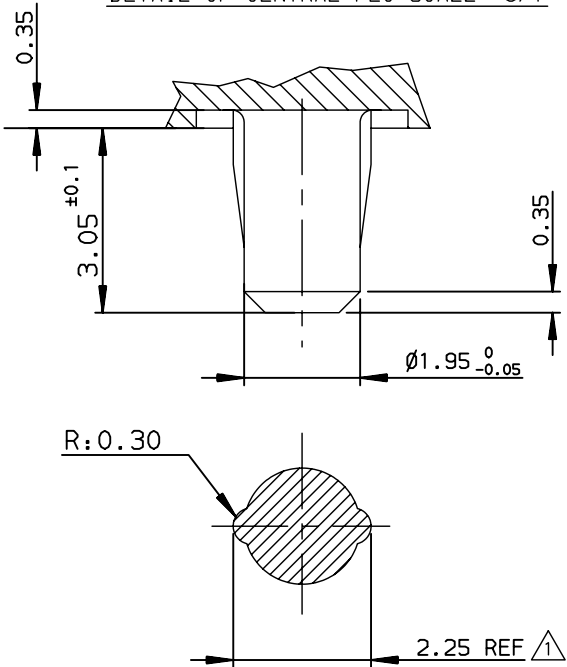


Hole according to product spec  
GS-12-445 (for press-fit) ,  
GS-12-446 (for STB)

DETAIL OF LOCATING PEGS (2x) SCALE 8/1






DETAIL OF CENTRAL PEG SCALE 8/1



OTHERS INFORMATIONS,SEE DRW 8626-11212-1/-3/-4

European Views

rev	ecn no	dr	date
A	-	PCH	2003/03/19
C	LS05-0056	LGO	2005/07/04
D	LS06-0097	LGO	2006/07/21
E	LS07-0184	MLE	2007/07/27
-	-	-	-
-	-	-	-
-	-	-	-

www.fciconnect.com			surface ISO 1302		tolerance std ISO 406 ISO 1101				
			TOLERANCES UNLESS OTHERWISE SPECIFIED						
Dr	CHAMPION	23/08/24	ANGULAR	LINEAR	0.X	±0.1	size A3	Scale 4	
Eng	LENOIR	2003/03/19			0.XX	±0.1			
Chr	LEGARE	2003/03/19			0.XX' ±2°	0.XXX			±0.1
Appr	LEGARE	2003/03/19	Product family METRAL				ECN LS07-0184		
							Spec ref -		
			title METRAL RE HDR CONV 4X24CTS-STB-PUSH PEG-SPEC				dwg no C-8626-11212-2		Rev. E
			catalog no		-		CUSTOMER		sheet 2 of 4

A

B

C

D

A

B

C

D

TIN LEAD PART NUMBER				HM1L43ZAP012H6P																											
LEAD FREE PART NUMBER				HM1L43ZAP012H6PLF																CTS LOADING PATTERN											
DIM-P	1	2	3	4	5	6	7	8	9	10	11	12	13	14	15	16	17	18	19	20	21	22	23	24							
ROW-D	5.00	5.00	5.00	6.50	6.50	6.50	5.00	5.00	5.00	6.50	6.50	6.50	5.00	5.00	5.00	6.50	6.50	6.50	5.00	5.00	5.00	6.50	6.50	6.50							
ROW-C	8.00	8.00	8.00	8.00	8.00	8.00	8.00	8.00	8.00	8.00	8.00	8.00	8.00	8.00	8.00	8.00	8.00	8.00	8.00	8.00	8.00	8.00	8.00	8.00							
ROW-B	8.00	8.00	8.00	8.00	8.00	8.00	8.00	8.00	8.00	8.00	8.00	8.00	8.00	8.00	8.00	8.00	8.00	8.00	8.00	8.00	8.00	8.00	8.00	8.00							
ROW-A	8.00	8.00	8.00	8.00	8.00	8.00	8.00	8.00	8.00	8.00	8.00	8.00	8.00	8.00	8.00	8.00	8.00	8.00	8.00	8.00	8.00	8.00	8.00	8.00							
DIM-D =2.9±0.3		NUMBER OF CTS = 96																													
					SP 012																										

TIN LEAD PART NUMBER				HM1L43ZAP099H6P																							
LEAD FREE PART NUMBER				HM1L43ZAP099H6PLF																CTS LOADING PATTERN							
DIM-P	1	2	3	4	5	6	7	8	9	10	11	12	13	14	15	16	17	18	19	20	21	22	23	24			
ROW-D	5.75	5.75	5.75	5.75	5.75	5.75	5.75	5.75	5.75	5.75	5.75	5.75	5.75	5.75	5.75	5.75	5.75	5.75	5.75	5.75	5.75	5.75	5.75	5.75			
ROW-C	5.75	5.75	5.75	5.75	5.75	5.75	5.75	5.75	5.75	5.75	5.75	5.75	5.75	5.75	5.75	5.75	5.75	5.75	5.75	5.75	5.75	5.75	5.75	5.75			
ROW-B	5.75	5.75	5.75	5.75	5.75	5.75	5.75	5.75	5.75	5.75	5.75	5.75	5.75	5.75	5.75	5.75	5.75	5.75	5.75	5.75	5.75	5.75	5.75	5.75			
ROW-A	5.00	6.50	6.50	6.50	6.50	6.50	6.50	6.50	5.75	5.75	5.75	5.75	5.75	5.75	5.75	5.75	6.50	6.50	6.50	6.50	6.50	6.50	6.50	5.00			
DIM-D =2.9±0.3		NUMBER OF CTS = 96																									
					SP 099																						

TIN LEAD PART NUMBER				HM1L43ZBP099H6P																														
LEAD FREE PART NUMBER				HM1L43ZBP099H6PLF																											CTS LOADING PATTERN			
DIM-P	1	2	3	4	5	6	7	8	9	10	11	12	13	14	15	16	17	18	19	20	21	22	23	24										
ROW-D	5.75	5.75	5.75	5.75	5.75	5.75	5.75	5.75	5.75	5.75	5.75	5.75	5.75	5.75	5.75	5.75	5.75	5.75	5.75	5.75	5.75	5.75	5.75	5.75										
ROW-C	5.75	5.75	5.75	5.75	5.75	5.75	5.75	5.75	5.75	5.75	5.75	5.75	5.75	5.75	5.75	5.75	5.75	5.75	5.75	5.75	5.75	5.75	5.75	5.75										
ROW-B	5.75	5.75	5.75	5.75	5.75	5.75	5.75	5.75	5.75	5.75	5.75	5.75	5.75	5.75	5.75	5.75	5.75	5.75	5.75	5.75	5.75	5.75	5.75	5.75										
ROW-A	5.00	6.50	6.50	6.50	6.50	6.50	6.50	6.50	5.75	5.75	5.75	5.75	5.75	5.75	5.75	5.75	6.50	6.50	6.50	6.50	6.50	6.50	6.50	5.00										
DIM-D =3.7±0.3		NUMBER OF CTS = 96																																
					SP 099																													
OTHERS INFORMATIONS SEE DRW 8626-11212-1/-2/-4																																		

OTHERS INFORMATIONS,SEE DRW 8626-11212-1/-2/-4

European Views

rev	ecn no	dr	date
A	-	PCH	2003/03/19
C	LS05-0056	LGO	2005/07/04
D	LS06-0097	LGO	2006/07/21
E	LS07-0184	MLE	2007/07/27
-	-	-	-
-	-	-	-
-	-	-	-

www.fciconnect.com			surface ISO 1302			tolerance std ISO 406 ISO 1101		projection 	
			TOLERANCES UNLESS OTHERWISE SPECIFIED						
Dr	CHAMPION	2003/03/19	ANGULAR	LINEAR	0.X	±0.1	size A3	Scale 4	
Eng	LENOIR	2003/03/19			0.XX	±0.1			
Chr	LEGARE	2003/03/19			0.XXX	±0.1			
Appr	LEGARE	2003/03/19	Product family				METRAL	Spec ref -	
			title METRAL RA HDR WB CONV 4X24CTS-STB-PUSH PEG-SPEC				dwg no C-8626-11212-3		Rev. E
catalog no			-				CUSTOMER	sheet 3 of 4	

A

B

C

D

A

B

C

D

TIN LEAD PART NUMBER				HM1L43DAP270H6P																							
LEAD FREE PART NUMBER				HM1L43DAP270H6PLF																CTS LOADING PATTERN							
DIM-P	1	2	3	4	5	6	7	8	9	10	11	12	13	14	15	16	17	18	19	20	21	22	23	24			
ROW-D	6.50	6.50	6.50	6.50	6.50	6.50	6.50	6.50	6.50	6.50	6.50	6.50	6.50	6.50	6.50	6.50	6.50	6.50	6.50		6.50	6.50	6.50	6.50			
ROW-C	6.50	6.50	6.50	6.50	6.50	6.50	6.50	6.50	6.50	6.50	6.50	6.50	6.50	6.50	6.50	6.50	6.50	6.50	6.50		6.50	6.50	6.50	6.50			
ROW-B	6.50	6.50	6.50	6.50	6.50	6.50	6.50	6.50	6.50	6.50	6.50	6.50	6.50	6.50	6.50	6.50	6.50	6.50	6.50		6.50	6.50	6.50	6.50			
ROW-A	6.50	6.50	6.50	6.50	6.50	6.50	6.50	6.50	6.50	6.50	6.50	6.50	6.50	6.50	6.50	6.50	6.50	6.50	6.50		6.50	6.50	6.50	6.50			
DIM-D =2.9±0.3		NUMBER OF CTS = 92																									
					SP 270																						

TIN LEAD PART NUMBER				HM1L43ZAP425H6P																											
LEAD FREE PART NUMBER				HM1L43ZAP425H6PLF																CTS LOADING PATTERN											
DIM-P	1	2	3	4	5	6	7	8	9	10	11	12	13	14	15	16	17	18	19	20	21	22	23	24							
ROW-D	5.75	5.75	5.75	5.75	5.75	5.75	5.75	5.75	5.75	5.75	5.75	5.75	5.75	5.75	5.75	5.75	5.75	5.75	5.75	5.75	5.75	5.75	5.75	5.75							
ROW-C	5.75	5.75	5.00	5.75	5.75	5.75	5.75	5.75	5.75	5.75	5.75	5.75	5.75	5.75	5.75	5.75	5.75	5.75	5.75	5.75	5.75	5.75	5.75	5.00							
ROW-B	5.75	5.75	5.75	5.75	5.75	5.75	5.75	5.75	5.75	5.75	5.75	5.75	5.75	5.75	5.75	5.75	5.75	5.75	5.75	5.75	5.75	5.75	5.75	5.75							
ROW-A	6.50	6.50	6.50	6.50	6.50	6.50	5.75	5.75	5.75	5.75	5.75	5.75	5.75	5.75	5.75	5.75	5.75	5.75	6.50	6.50	6.50	6.50	6.50	6.50							
DIM-D =2.9±0.3		NUMBER OF CTS = 96																													
				SP 425																											

TIN LEAD PART NUMBER				HM1L43ZAP459H6P																							
LEAD FREE PART NUMBER				HM1L43ZAP459H6PLF																CTS LOADING PATTERN							
DIM-P	1	2	3	4	5	6	7	8	9	10	11	12	13	14	15	16	17	18	19	20	21	22	23	24			
ROW-D	6.50	6.50			5.75	5.75			5.75	5.75					5.75	5.75	5.75	5.75	5.75	5.75	5.75	5.75	5.75	5.75			
ROW-C	5.75	5.75			5.75	5.75			5.75	5.75					5.75	5.75	5.75	5.75	5.75	5.75	5.75	5.75	5.75	5.75			
ROW-B	5.75	5.75			5.75	5.75			5.75	5.75					5.75	5.75	5.75	5.75	5.75	5.75	5.75	5.75	5.75	5.75			
ROW-A	5.75	5.75			5.75	5.75			5.75	5.75					5.00	5.75	5.75	5.75	5.75	5.75	5.75	5.75	5.75	5.75			
DIM-D =2.9±0.3		NUMBER OF CTS = 96																									
					SP 459			OTHERS INFORMATIONS.SEE DRW 8626-11212-1/-2/-3																			

OTHERS INFORMATIONS,SEE DRW 8626-11212-1/-2/-3

European Views

rev	ecn no	dr	date
A	-	PCH	2003/03/19
C	LS05-0056	LGO	2005/07/04
D	LS06-0097	LGO	2006/07/21
E	LS07-0184	MLE	2007/07/27
-	-	-	-
-	-	-	-
-	-	-	-

www.fciconnect.com			surface ISO 1302			tolerance std ISO 406 ISO 1101		projection 	mm
			TOLERANCES UNLESS OTHERWISE SPECIFIED						
Dr	CHAMPION	2003/03/19	ANGULAR	LINEAR	0.X	±0.1	size A3	Scale 4	
Eng	LENOIR	2003/03/19			0.XX	±0.1			
Chr	LEGARE	2003/03/19			0.XX' ±2°	0.XXX			±0.1
Appr	LEGARE	2003/03/19	Product family				METRAL	Spec ref -	
		title METRAL RA HDR WB CONV 4x24CTS-STB-PUSH PEG-SPEC				dwg no C-8626-11212-4	Rev. E		
		catalog no		-			CUSTOMER		sheet 4 of 4

# Mouser Electronics

Authorized Distributor

Click to View Pricing, Inventory, Delivery & Lifecycle Information:

[FCI / Amphenol:](#)

[HM1L43ZAP459H6PLF](#)