

4

3

2

1

THIS DRAWING IS UNPUBLISHED.

RELEASED FOR PUBLICATION

© COPYRIGHT

ALL RIGHTS RESERVED.

LOC

DIST

REVISIONS

P	LTR	DESCRIPTION	DATE	DWN	APVD
	A1	ECR-14-001893	13FEB2014	GK	HMR

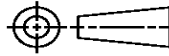
REPLACED BY OCEAN STYLE APPLICATOR PART
NUMBER 2151456-1

FOR REPLACEMENT PARTS FOR APPLICATOR 1855376
REFER TO ADDITIONAL PAGE(S). SPARE PARTS KIT (IF LISTED)
WILL REMAIN AVAILABLE.

THE REPLACEMENT OCEAN STYLE APPLICATOR HAS THE
SAME TERMINATOR/PRESS INTERFACE AS APPLICATOR
1855376

THIS DRAWING IS A CONTROLLED DOCUMENT.		DWN	GOPALAKRISHNA HV			
		CHK	RAGHAVENDRA			
		APVD	RAGHAVENDRA			
		PRODUCT SPEC				
		APPLICATION SPEC				
		WEIGHT				
		CUSTOMER DRAWING		SCALE	SHEET 1 OF 2	
				REV	A1	

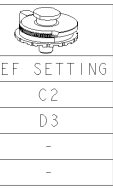
TE Connectivity			
HDM SIDE FEED APPLICATOR W/FINE ADJUST			
SIZE	CAGE CODE	DRAWING NO	RESTRICTED TO
A3		©- 1855376	

DIMENSIONS:	TOLERANCES UNLESS OTHERWISE SPECIFIED:
	0 PLC ± 1 PLC ± 2 PLC ± 3 PLC ± 4 PLC ± ANGLES ±

MATERIAL	FINISH

6	5
<p>AMP-O-ELECTRIC TERM GUARD</p>	<p>G TERMINATOR GUARD</p>

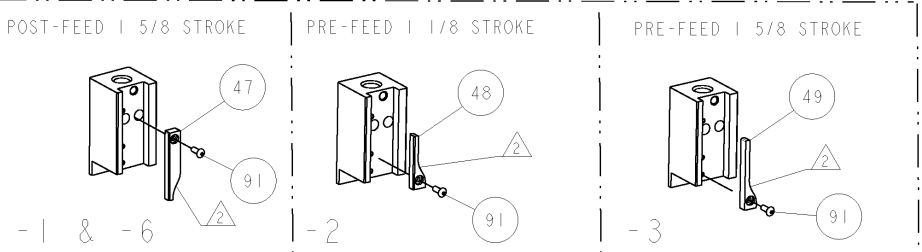
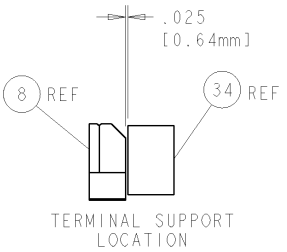
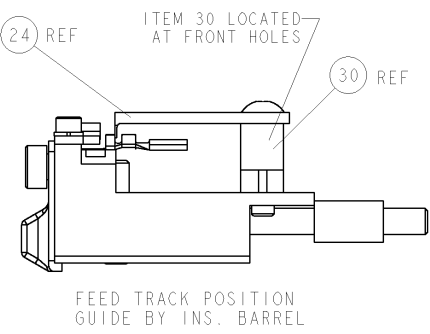
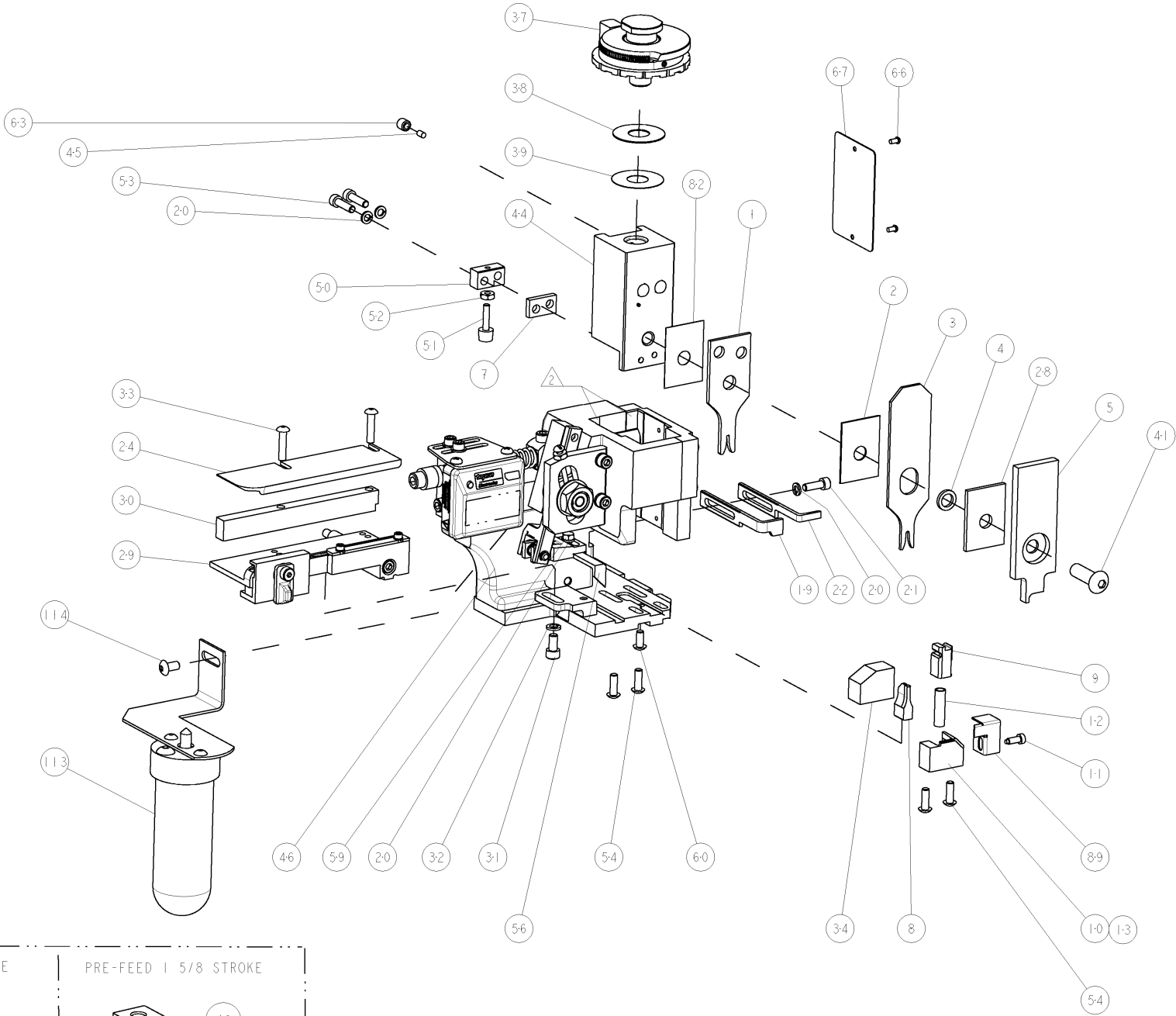
TERMINAL NAME: BMK 0.6 CONTACT							
TE PN	MFR PN	BOSCH TERMINAL - TE CRIMP SPECS					
1572293-1	1 928 498 016						
1572293-2	1 928 498 014	CRIMP HEIGHT				WIRE SIZE	
-	-	1.07mm+.05/- .05[.042+.002/- .002]				0.75mm2	
-	-	.92mm+.05/- .05[.036+.002/- .002]				0.5mm2	
-	-					-	
-	-					-	
-	-	CRIMP	SIZE		TYPE	RANGE	
-	-						
-	-	WIRE	1.58mm [.062]		F	0.50-0.75mm2	
-	-	INSUL	2.29mm [.090]		O	Ø 1.900 MAX	
WIRE STRIP LENGTH 3.400-3.810	TERM APPL SPEC NONE	FEED 7.160	APPLICATOR INSTRUCTIONS 408-8040				SET UP GAGE 458637-1




2		1					
LOC	DIST	REVISIONS					
A	66	REV	DESCRIPTION	DATE	OWN	APPROV	
		A	RELEASED	14MAR2008	MEH	TE	

- 1 RECOMMENDED SPARE PARTS
- 2 GREASE LIGHTLY
- 3 GUARD MUST BE IN PLACE WHEN OPERATING APPLICATOR IN A BENCH MACHINE

* WARNING
ON INSTALLATION, SET WIRE
DISC TO LARGEST WIRE SIZE
SETTING. USE OF SETTINGS
BELOW MIN. REQUIRED CRIMP
HEIGHT SETTING WILL CAUSE
DAMAGE TO CRIMP TOOLING.



3	-	-	-	REF	-	..	455749-1	GUARD WINDOW	116
3	-	-	-	REF	-	..	679532-1	INSERT, GUARD	115
	-	-	-	I	-	..	2-21002-6	SCR, BTN SKT HD CAP 10-32 X .375	114
	-	-	-	I	-	..	1-465184-0	LUBRICATOR ASSY	113
	-	I	I	I	I	-	1-21002-7	SCR, BTN SKT HD CAP 6-32 X .375	91
	-	I	I	I	I	-	318563-1	GUARD, FRONT CHIP	89
	-	I	I	I	I	-	455888-1	SPACER, CRIMPER	82
	-	I	I	I	I	-	4088040	SF APPL INST 408-8040	72
	-	I	I	I	I	-	217238-1	GENERAL INSTRUCTION PKG	71
	-	I	I	I	I	-	461264-5	PLATE, IDENTIFICATION	6
	-	2	2	2	2	-	21017-2	SCREW, DRIVE	66
	-	I	I	I	I	-	21009-2	SCR, SET, SELF LOCKING 1/4-20 X .250	63
	-	I	I	I	I	-	22733-8	SCR, BHSC, SELF-LOCKING, 8-32 X .375	60
	-	I	I	I	I	-	2-22603-0	SCR, HEX HD CAP 8-32 X .312	59
	-	I	I	I	I	-	458537-2	PAWL, FEED	56
	-	4	4	4	4	-	2-21002-2	SCR, BTN SKT HD CAP 8-32 X .500	54
	-	2	2	2	2	-	2-21000-8	SCR, SKT HD CAP 8-32 X .625	53
	-	I	I	I	I	-	21018-5	NUT, HEX, REG 6-32	52
	-	I	I	I	I	-	811242-2	BUMPER, HOLD DOWN	51
	-	I	I	I	I	-	690753-1	SPACER, TONKER	50
	-	-	I	-	-	..	690602-6	CAM, PRE FEED, 1 5/8	49
	-	-	-	I	-	..	690602-5	CAM, PRE FEED, 1 1/8	48
	-	I	-	-	I	-	690501-4	CAM, POST FEED, 1 5/8	47
	-	I	I	I	I	-	459456-1	APPL. BASIC SUB ASSY (SIDE WISE MOCA)	46
	-	I	I	I	I	-	690191-1	PLUG,NYLON	45
	-	I	I	I	I	-	455673-1	RAM, SIDE FEED	44
	-	I	I	I	I	-	7-21002-9	SCR, BTN SKT HD CAP 5/16-24 X 1.00	41
	-	I	I	I	I	-	690125-1	SHIM SUB-ASSY	39
	-	I	I	I	I	-	1-469367-2	SHIM	38
	-	I	I	I	I	-	879103-3	FINE ADJUST HEAD ASSEMBLY	37
	-	I	I	I	I	-	690786-6	TERMINAL SUPPORT	34
	-	2	2	2	2	-	2-21002-4	SCR, BTN SKT HD CAP 8-32 X .750	33
	-	I	I	I	I	-	21024-5	WASHER, SPRG LOCK, REG NO 10	32
	-	I	I	I	I	-	3-21000-4	SCR, SKT HD CAP 10-32 X .375	31
	-	I	I	I	I	-	1320908-1	SPACER, STRIP GUIDE	30
	-	I	I	I	I	-	1633091-1	ASSEMBLY, STRIP GUIDE	29
	-	I	I	I	I	-	2-455888-2	SPACER, CRIMPER	28
	-	I	I	I	I	-	1320928-1	PLATE, STRIP GUIDE	24
	-	I	-	-	I	-	690472-2	STRIPPER	22
	-	I	I	I	I	-	2-21000-7	SCR, SKT HD CAP 8-32 X .500	21
	-	4	4	4	4	-	21024-4	WASHER, SPRG LOCK, REG NO 8	20
	-	-	I	I	-	-	691353-1	STRIPPER	19
△	-	I	-	-	-	-	679625-1	SHEAR HOLDER, FRONT (NO CUT)	13
	-	I	I	I	I	-	3-22280-3	SPRING, COMPRESSION	12
△	-	I	I	I	I	-	690461-1	STOP, SHEAR	11
△	-	-	I	I	I	-	690459-1	SHEAR HOLDER, FRONT	10
△	-	I	I	I	I	-	454276-1	FLOATING SHEAR, FRONT	9
△	I	I	I	I	I	-	2-1633330-0	ANVIL, COMBINATION	8
	-	I	I	I	I	-	240641-8	SPACER	7
	-	-	-	-	-	..	-	-	6
	-	I	I	I	I	-	1-455889-4	DEPRESSOR, SHEAR	5
	-	I	I	I	I	-	238011-6	BLOCK, CRIMPER SPACER	4
△	I	I	I	I	I	-	6-456135-8	CRIMPER, INSULATION O PREMIUM	3
	-	I	I	I	I	-	455888-7	SPACER, CRIMPER	2
△	I	I	I	I	I	-	1-456403-3	CRIMPER, WIRE PREMIUM	1

ALL DIMENSIONS ARE TO CENTER UNLESS OTHERWISE SPECIFIED. DIMENSIONS SHOULD BE CONTROLLED BY THE LATEST REVISION.		DWG. <u>HERR</u> 27FEB2008 GBA. <u>CHALEY</u> 27FEB2008 N. DEMING 27FEB2008		Tyco Electronics Tyco Electronics Harrisburg, PA 17105-3608	
DIMENSIONS: INCHES		TOLERANCES UNLESS OTHERWISE SPECIFIED: 6 PLG ±.1 2 PLG ±.01 2 PLG ±.0001 4 PLG ±.0001 FINISH		NAME FINE ADJUST SIZE FEED HDM APPLICATOR -	
		PRODUCT SPEC APPLICATION SPEC		SIZE CASE CODE DRAWING NO A 00779 C-1855376	
MATERIAL -		WEIGHT -		RESTRICTED TO -	
CUSTOMER DRAWING		SCALE 3:5		SHEET 1 OF 1 REV A	

Mouser Electronics

Authorized Distributor

Click to View Pricing, Inventory, Delivery & Lifecycle Information:

[TE Connectivity:](#)

[1855376-3](#)