

SAFETY ORGANIZATION(S):

THIS FILTER HAS BEEN FORMALLY RECOGNIZED, CERTIFIED OR APPROVED BY THE LISTED AGENCY. THEREFORE, ALL TEST/REQUIREMENTS SPECIFIED IN THE LATEST REVISION OF THE FOLLOWING AGENCY STANDARDS HAVE BEEN MET:

UL RECOGNIZED
UL 1283
CSA CERTIFIED
CSA 22.2, NO. 0, 0.4, 8
VDE APPROVED
VDE 565-3

OPERATING SPECIFICATIONS:

LINE VOLTAGE/CURRENT:
3.0 AMP., 120/250 VAC
2.5 AMP./40°C, 250 VAC
50-60Hz
40°C
0.5mA at 120V 60 Hz
1.0 mA at 250V 50 Hz
-10°C TO +40°C @ RATED CURRENT, I_r

LINE FREQUENCY:
MAX. CASE RISE @ RATED CURRENT:
MAX. LEAKAGE CURRENT, EACH
LINE TO GROUND
OPERATING AMBIENT TEMP. RANGE:

IN AN AMBIENT, T_a, HIGHER THAN 40°C, THE MAXIMUM OPERATING CURRENT, I_o, IS AS FOLLOWS:

$$I_o = I_r \sqrt{\frac{85 - T_a}{45}}$$

RELIABILITY SPECIFICATIONS:

STORAGE TEMPERATURE:
-40°C TO +85°C
21 DAYS @ 40°C 95% RH
6 TIMES RATED CURRENT FOR 8 SECONDS

HUMIDITY:

CURRENT OVERLOAD TEST:

TEST SPECIFICATIONS:

INDUCTANCE:
1.02 mH NOMINAL

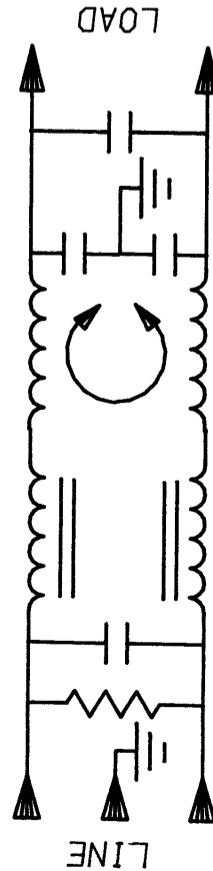
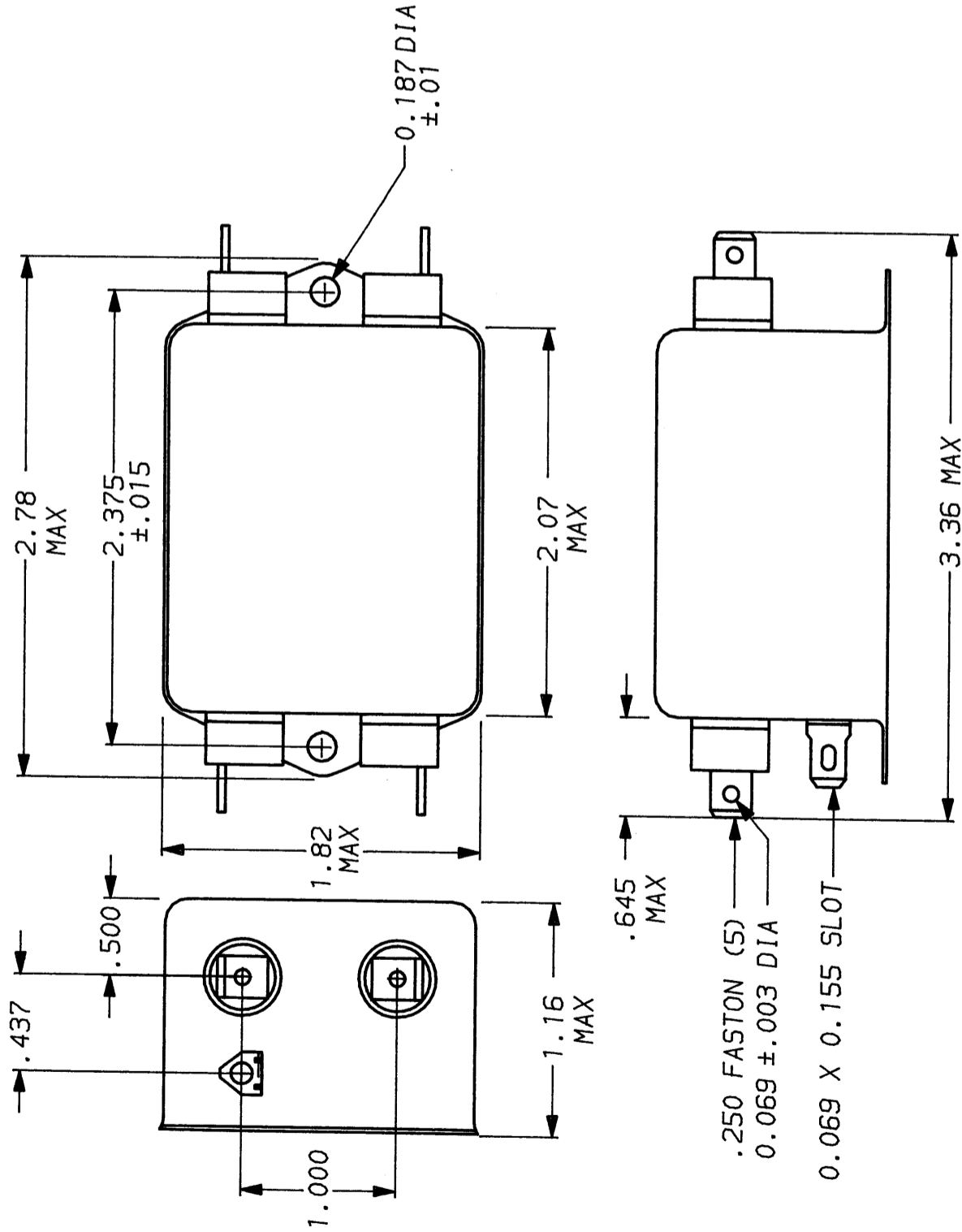
CAPACITANCE: (MEASURED @ 1 KHz, 0.25 VAC MAX., 25°C ±1°C)
LINE TO GROUND:
LINE TO LINE:
DISCHARGE RESISTOR:
LINE/GROUND AND LINE/LINE
INSULATION RESISTANCE
(W/O DISCHARGE RESISTOR)

RECOMMENDED RECEIVING INSPECTION HIPOT:

LINES TO GROUND:
2250 VDC FOR 1 MINUTE
LINE TO LINE:
1450 VDC FOR 1 MINUTE

FILTER APPROVAL:

THE BEST WAY TO SELECT AND QUALIFY A FILTER IS FOR YOUR ENGINEERING TO TEST THE UNIT IN YOUR EQUIPMENT.



50Ω - 50Ω (MINIMUM) INSERTION LOSS

| FREQUENCY MHz | .15.5 | 1 | 2 | 5 | 10 | 20 | 30 |
|---------------|-------|----|----|----|----|----|----|
| COMMON dB | 15 | 27 | 35 | 40 | 45 | 47 | 47 |
| DIFF. dB | 35 | 65 | 65 | 65 | 62 | 50 | 40 |
| | | | | | | | 45 |

This document is proprietary to CORCOM INC. and is not to be reproduced nor used for manufacturing purposes except on CORCOM's order or prior written consent.



POWER LINE FILTER

| | | | |
|---------|------------|----------|------|
| SCALE | DATE | DRG. NO. | REV. |
| NTS | 9-12-89 | 3VS1.06 | 06 |
| DRW. BY | ORIGINATOR | | |
| TDL | CW | | |

Mouser Electronics

Authorized Distributor

Click to View Pricing, Inventory, Delivery & Lifecycle Information:

[TE Connectivity:](#)

[3VS1](#)