

LOC		DIST		REVISIONS				
GP	00	P	LTR	DESCRIPTION		DATE	DWN	APVD
		B	REVISED PER ECO-06-002423		08JUN06	JDP	MDB	

- △

HOUSING—MATERIAL : LIQUID—CRYSTAL—POLYMER.
- △

CONTACT—MATERIAL : PHOS. BRONZE.
- △

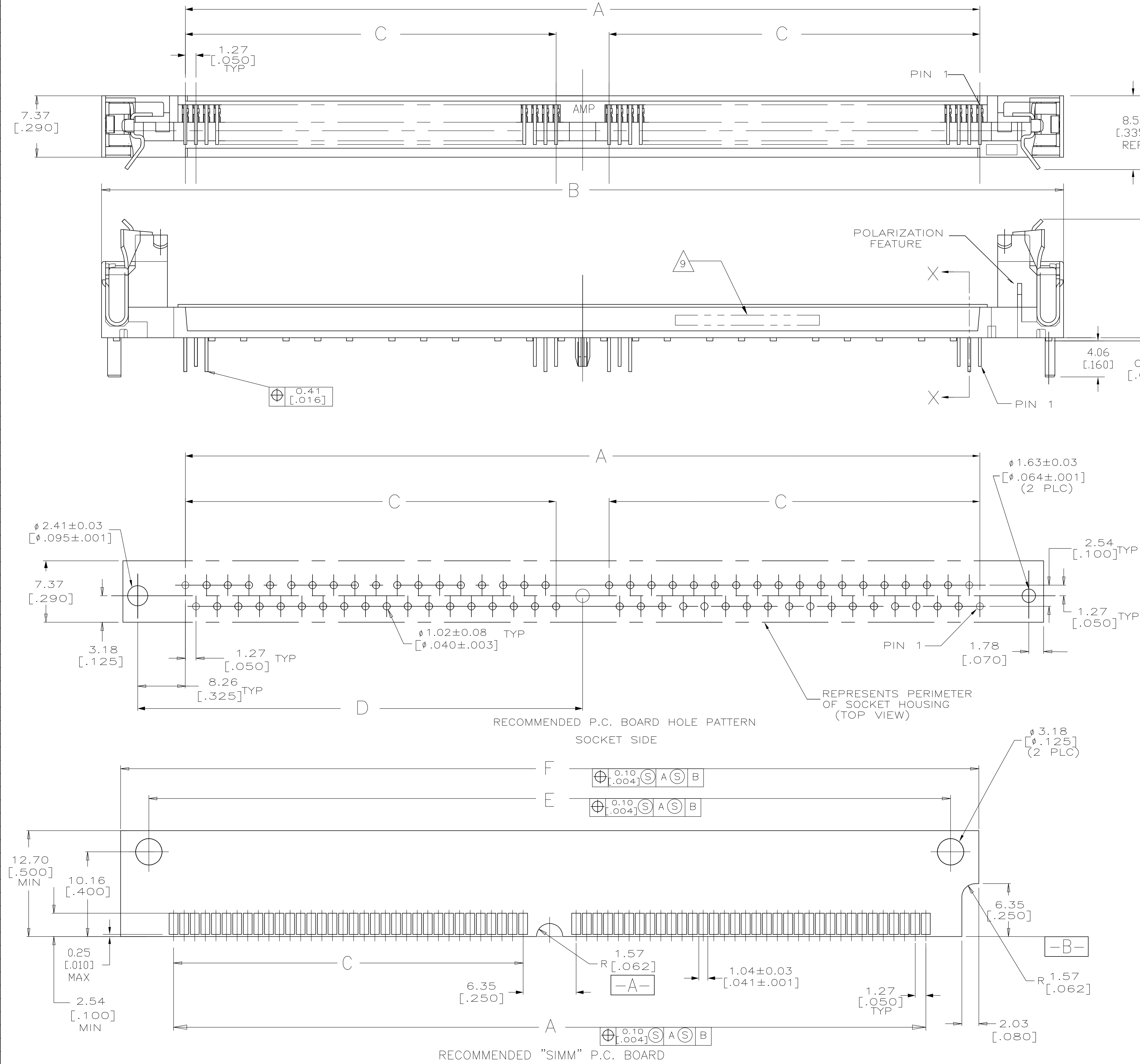
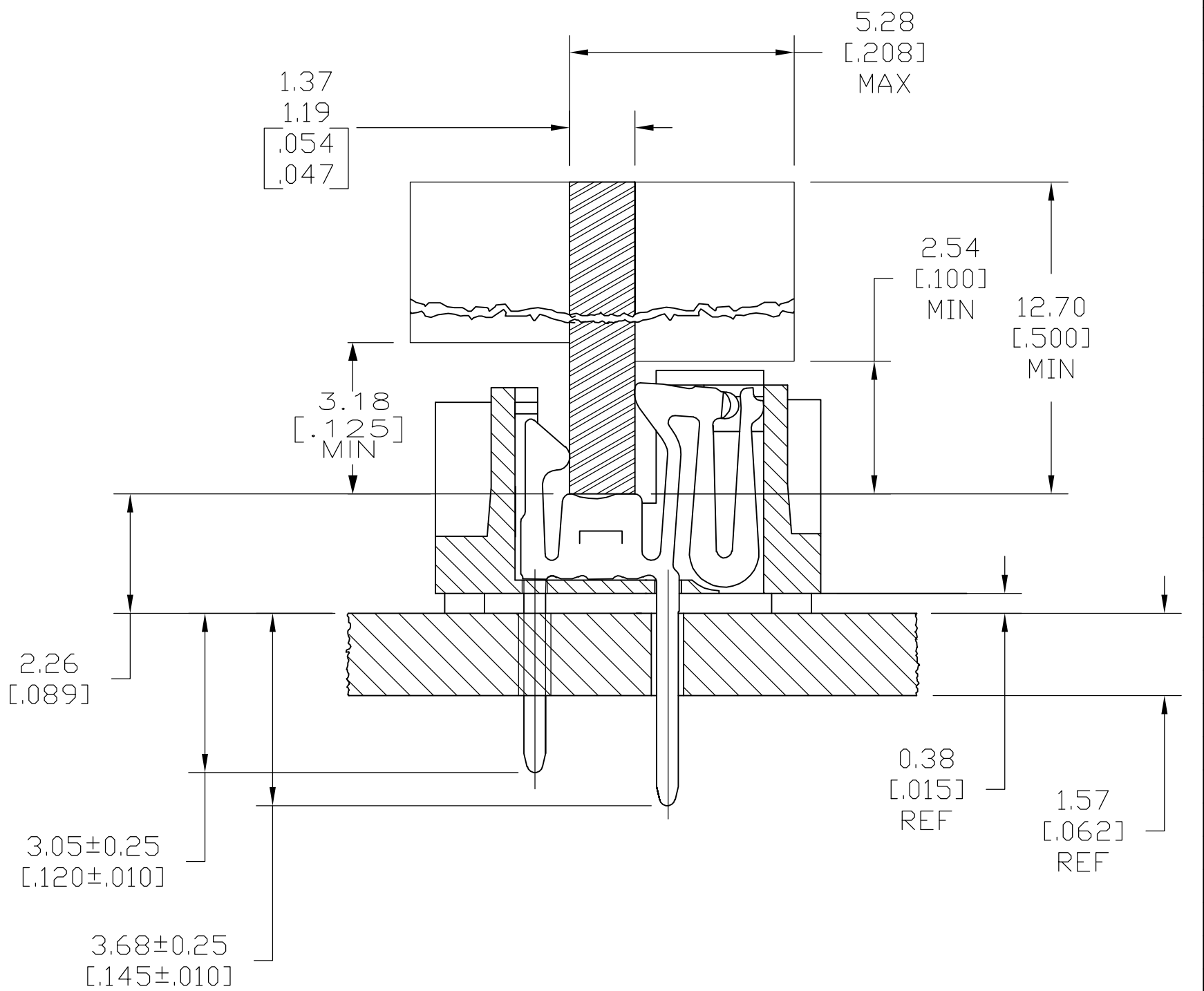
LATCH—MATERIAL : BRASS, NICKEL PLATE.
- △


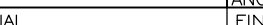
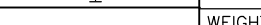
CONTACT—PLATE 0.00127 [.000050] MIN NICKEL ALL OVER.
- △

CONTACT—PLATE 0.00076[.000030] MIN. GOLD AT CONTACT PTS.
- △

CONTACT SOLDER TAILS—PLATE 0.00508[.000200] MIN MATTE TIN.
7. IN ADDITION TO THOSE RECOMMENDED "SIMM" P.C. BOARD DIMENSIONS AND TOLERANCES SHOWN, ALL JEDEC SPECIFICATIONS APPLY AS SHOWN ON MO-116, ISSUE A.
8. RECOMMENDED MATING S.I.M.M. TAB METALLURGY:
BASE METAL—COPPER. PLATING TO BE 0.00076[.000030] MIN GOLD OVER 0.00127[.000050] MIN NICKEL.
- △

9. DATE CODE: (YEAR WEEK) XXXX FORMAT, LOCATED APPROXIMATELY AS SHOWN ON OPPOSITE SIDE.



107.95[4.250]	101.19[3.984]	55.88[2.200]	44.45[1.750]	115.57[4.550]	95.25[3.750]	72	5822032-4
F	E	D	C	B	A	NO. OF POSN	PART NO
THIS DRAWING IS A CONTROLLED DOCUMENT.				Tyco Electronics Corporation Harrisburg, PA 17105-3608			
DIMENSIONS: mm [INCHES]		TOLERANCES UNLESS OTHERWISE SPECIFIED:		NAME			
		0 PLC ± -		CONNECTOR, MICRO-EDGE, .050, VERTICAL, GOLD PLATING, W/METAL LATCH			
		1 PLC ± -					
		2 PLC ± -					
		3 PLC ± 0.13[.005]					
4 PLC ± -		APPLICATION SPEC		SIZE			
MATERIAL		FINISH		WEIGHT		CAGE CODE	
				A1		00779	
CUSTOMER DRAWING				DRAWING NO			
				RESTRICTED TO			
				SCALE 4:1			
				SHEET 1 of 1			
				REV B			

Mouser Electronics

Authorized Distributor

Click to View Pricing, Inventory, Delivery & Lifecycle Information:

[TE Connectivity:](#)

[5822032-4](#)