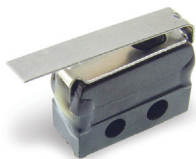


MM Series

Subminiature Precision Snap-acting Switches



Features/Benefits

- Low level and power switching
- Long electrical and mechanical life
- Increased overtravel
- Reliable snap-acting mechanism

Typical Applications

- Limited space constraints
- Communication devices

Specifications

CONTACT RATING: From low level* to 7 AMPS @ 250 V AC.
ELECTRICAL LIFE: 100,000 cycles at full rated load.
INSULATION RESISTANCE: 1,000 ohm min.
DIELECTRIC STRENGTH: 1,000 V RMS min. @ sea level.
OPERATING TEMPERATURE: -67 F to 275 F (-55 C to 135 C).
OPERATING FORCE: 5 oz. (142 grams) max. at actuator button.
MOUNTING: 2-56 screws, torque 2 in/lbs max.

*Low Level=conditions where no arcing occurs during switching, i.e., 0.4 VA max. @ 20 V AC or DC max.

Materials

SWITCH HOUSING: Heat resistant phenolic (UL 94V-0).
ACTUATOR BUTTON: Heat resistant phenolic (UL 94V-0).
SPRING: Beryllium copper CDA alloy C17200.
PIVOT: Brass CDA alloy 260.
MOVABLE CONTACTS: Fine silver for ratings greater than 1 AMP @ 125 V AC. 24K gold for 1 AMP @ 125 V AC or less.
STATIONARY CONTACTS: Fine silver inlay on copper CDA alloy C10200 for ratings greater than 1 AMP @ 125 V AC. 24K gold on copper CDA alloy C10200 for 1 AMP @ 125 V AC or less.
TERMINALS: Copper CDA alloy C18700.

NOTE: Specifications and materials listed above are for switches with standard options. For information on specific and custom switches, consult Customer Service center.

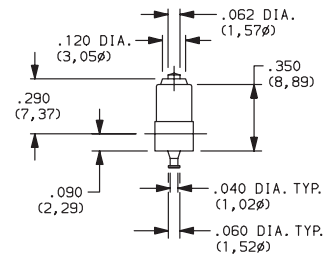
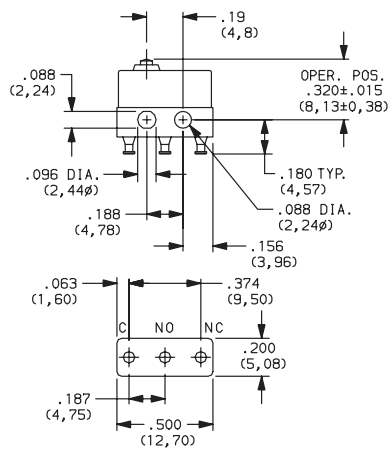
Build-A-Switch

To order, simply select desired option from each category and place in the appropriate box. Available options are shown and described on pages J-44 through J-49. For additional options not shown in catalog, consult Customer Service Center.

	M	M		G	G				
Series									
MM SP, Mom.									
Operating Force									
GG 5 oz./142 grams									
Electrical Rating									
D1 7A 125, 250 VAC									
7A 28 VDC resistance									
4A 28 VDC inductive									
2.5A 28 VDC (lamp)									
F5 1 A, 125 V AC, 30 V DC									
Actuator									
P0 Pin plunger									
D0 Plunger, high overtravel									
C0 Leaf									
L2 Leaf, high force, low motion									
W0 Leaf roller									
W2 Leaf roller, high force, low motion									
Terminations									
C Single turret solder									
L Left formed PC thru-hole									
R Right formed PC thru-hole									
T PC thru-hole, .035"									

MM Series Subminiature Precision Snap-acting Switches

SWITCH WITH STANDARD OPTIONS



PART NUMBER	BASIC OPERATING FORCE (OZ./GRAMS)	ELECTRICAL RATING
MMGGD1P0C	5 142	7 AMPS @ 250 V AC.

SERIES ■ ■ ■ ■ ■ ■ ■ ■

OPERATING FORCE ■ ■ ■ ■ ■ ■ ■ ■

MM SPDT MOMENTARY

OPTION CODE	BASIC SWITCH OPERATING FORCE
GG	5 oz. (142 grams) maximum for basic switch with pin plunger actuator (*P0* actuator option).

NOTE : Operating force varies with actuator option, see ACTUATOR option section.

ELECTRICAL RATING ■ ■ ■ ■ ■ ■ ■ ■

OPTION CODE	RoHS COMPLIANT*	RoHS COMPATIBLE*	CONTACT MATERIAL		ELECTRICAL RATING
			MOVABLE CONTACT	STATIONARY CONTACT	
D1	Yes	Yes	Fine silver.	Fine silver inlay on copper alloy.	7A 125, 250 VAC; 7A 28 VDC resistance 4A 28 VDC inductive; 2.5A 28 VDC (lamp)
F5	Yes	Yes	24K Gold.	24K Gold on copper alloy.	From low level* to 1 AMP @ 125 V AC, 30 V DC.

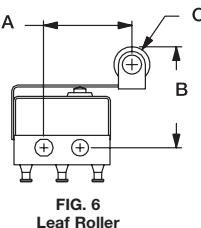
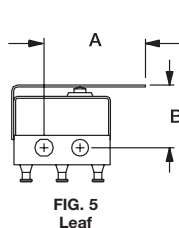
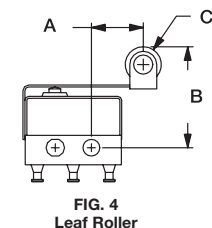
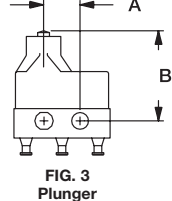
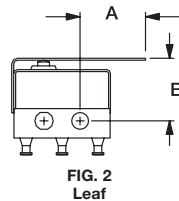
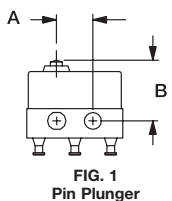
Note: See Technical Data section of this catalog for RoHS compliant and compatible definition and specifications.

All models **C&K** US with all options.

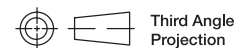
Consult Customer Service Center for availability and delivery of nonstandard ratings.

* Low Level=conditions where no arcing occurs during switching, i.e., 0.4 VA max. @ 20 V AC or DC max.

ACTUATOR ■ ■ ■ ■ ■ ■ ■ ■



OPTION CODE	FIG.	DIM. A	DIM. B	DIM. C
P0	1	.19 (4, 8)	.320 ± .015 (8, 13 ± 0, 38)	—
D0	3	.19 (4, 8)	.475 ± .031 (12, 07 ± 0, 79)	—
L0	2	.34 (8, 6)	.330 ± .015 (8, 38 ± 0, 38)	—
L2	5	.53 (13, 5)	.330 ± .015 (8, 38 ± 0, 38)	—
W0	4	.27 (6, 9)	.532 ± .025 (13, 51 ± 0, 64)	.188 dia. (4, 78)
W2	6	.46 (11, 7)	.532 ± .025 (13, 51 ± 0, 64)	.188 dia. (4, 78)



Dimensions are shown: Inches (mm)
Specifications and dimensions subject to change



MM Series

Subminiature Precision Snap-acting Switches

ACTUATOR ■ ■ ■ ■ ■ ■ ■ ■

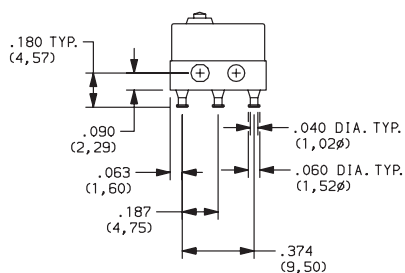
SWITCH CHARACTERISTICS

OPTION CODE	MAXIMUM OPERATING FORCE (OZ./GRAMS)	MINIMUM RELEASE FORCE (OZ./GRAMS)	MAXIMUM DIFFERENTIAL TRAVEL	MAXIMUM PRETRAVEL	MINIMUM OVERTRAVEL
D0	5 142	.7 20	.004 (0,10)	.030 (0,76)	.040 (1,02)
L0	4 115	.7 20	.025 (0,64)	.090 (2,29)	.045 (1,14)
L2	6 170	.7 20	.012 (0,30)	.075 (1,90)	.015 (0,38)
P0	5 142	1 28	.002 (0,05)	.020 (0,51)	.004 (0,10)
W0	4 115	.7 20	.025 (0,64)	.090 (2,29)	.045 (1,14)
W2	6 170	.7 20	.012 (0,30)	.075 (1,90)	.015 (0,38)

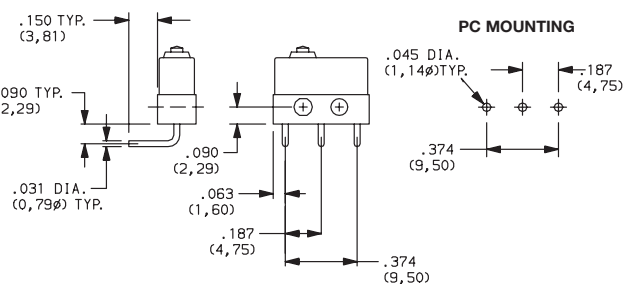
NOTE : For basic switch operating forces, see page J-44

TERMINATIONS

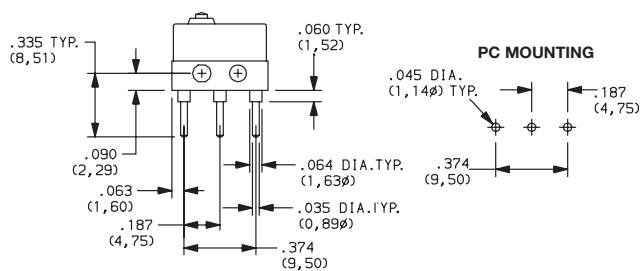
C SINGLE TURRET SOLDER



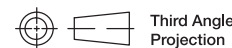
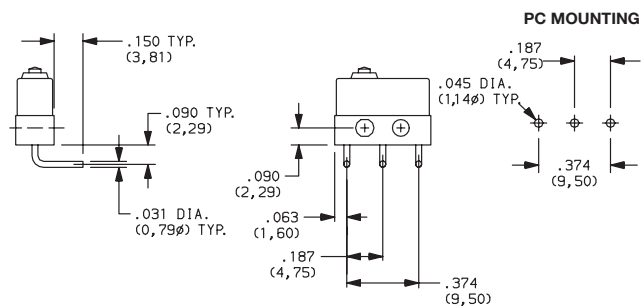
L LEFT FORMED PC THRU-HOLE



T PC THRU-HOLE, .035"



R RIGHT FORMED PC THRU-HOLE



Third Angle Projection

Dimensions are shown: Inch (mm)

Specifications and dimensions subject to change

Mouser Electronics

Authorized Distributor

Click to View Pricing, Inventory, Delivery & Lifecycle Information:

C&K Switches:

[MMGGD1L2C](#) [MMGGD1W0C](#) [MMGGD1D0C](#) [MMGGD1L0C](#) [MMGGD1D0R](#) [MMGGD1L0L](#) [MMGGD1L0R](#)
[MMGGD1L0T](#) [MMGGD1L2L](#) [MMGGD1L2R](#) [MMGGD1L2T](#) [MMGGD1P0C](#) [MMGGD1W0L](#) [MMGGD1W0R](#)
[MMGGD1W0T](#) [MMGGF5D0C](#) [MMGGF5L0C](#) [MMGGF5L0R](#) [MMGGF5L2C](#) [MMGGF5L2T](#) [MMGGF5W0C](#)
[MMGGF5W0T](#) [MMGGF5L0T](#) [MMGGD1P0L](#) [MMGGF5D0T](#) [MMGGF5P0L](#) [MMGGD1P0T](#) [MMGGD1W2R](#)
[MMGGD1W2L](#) [MMGGD1W2T](#) [MMGGF5W2L](#) [MMGGD1P0R](#) [MMGGD1W2C](#) [MMGGD1D0L](#) [MMGGF5W2C](#)
[MMGGF5P0R](#) [MMGGF5D0R](#)