

KUMP Series Panel Plug-in Relay

- 15 amp rating
- Contact arrangements 1-3 form A, 1-3 form B, 1-3 form C, 1 form X, 1 form Y, 1 form Z
- Open or enclosed
- Plain or bracket mount dust covers
- Optional indicator lamp and push-to-test button
- Several termination and mounting styles

Typical applications
Hospital beds, semiconductor wafer equipment, boom/bucket lifts.



Approvals

UL E22575; CSA LR15734

Technical data of approved types on request.

Contact Data

Contact arrangement	1, 2 and 3 form A (NO); 1, 2 and 3 form B (NC); 1, 2 and 3 form C (CO); 1 form X (NO-DM); 1 form Y (NC-DB); 1 form Z (CO-DB-DM)	
Rated voltage	277VAC	
Rated current	15A	
Contact material	AgCdO	AgSnOInO
Min. recommended contact load	300mA, 12VDC	300mA, 12VDC
Frequency of operation	360 ops./hour	360 ops./hour
Operate/releases time max.	15/10ms	
Bounce time max.	17ms	

Contact ratings

Type	Load	Cycles
UL 508 AgCdO	15A, 277VAC	
	1/2HP, 120VAC	
	10A, 240VAC	
	10A, 32VDC	
	5FLA, 15LRA, 250VAC	
	5A, 120VAC, tungsten	
	0.5A, 250VAC	
	0.5A, 125VDC	
	10FLA, 40LRA, 125VAC	
	3A, 600VAC	
1/2HP, 480VAC		
1/2HP, 600VAC		
1HP, 480VAC, 3 phase		
AgSnOInO	15A, 277VAC, pf = 0.8	15x10 ³
	10A, 277VAC, pf = 0.8	100x10 ³
Mechanical endurance	10x10 ⁶ ops.	

Coil Data

Coil voltage range	5 to 110VDC 6 to 240VAC
Coil insulation system according UL	Class B

Coil versions, DC coil

Coil code	Rated voltage VDC	Operate voltage VDC	Coil resistance Ω±10%	Rated coil power W
5	5	3.75	21	1.2
6	6	4.5	32.1	1.125
12	12	9.0	120	1.2
24	24	18.0	472	1.25
48	48	36.0	1800	1.3
110	110	82.5	10000	1.25

All figures are given for coil without preenergization, at ambient temperature +23°C.

Coil versions, AC coil

Coil code	Rated voltage VAC	Operate voltage VAC	Coil resistance Ω±15%	Rated coil power VA
6	6	5.1	4.2	2.8
12	12	10.2	18	2.8
24	24	20.4	72	2.8
120	120	102.0	1700	2.9
240	240	204.0	7200	2.9

All figures are given for coil without preenergization, at ambient temperature +23°C.

Insulation Data

Initial dielectric strength		
between open contacts		1200V _{rms}
between contact and coil		2200V _{rms}
between adjacent contacts		2200V _{rms}
Initial insulation resistance		
between insulated elements		100MΩ, 500VDC

Other Data

Material compliance: EU RoHS/ELV, China RoHS, REACH, Halogen content refer to the Product Compliance Support Center at www.te.com/customer-support/rohssupportcenter

Ambient temperature		
DC coil	Enclosed relays:	-45°C to 70°C
	Open relays:	15°C higher maximum
AC coil	Enclosed relays, 3 pole:	-45°C to +45°C
	Enclosed relays, 1 and 2 pole:	-45°C to +55°C
	Open relays:	15°C higher maximum
Category of environmental protection		
IEC 61810	RT0 - open relay; RTI - dust protected	
Terminal type	Quick connects (QC), .187, .205 or .250: PCB-THT	
Terminal retention, push force		
QC .205		17 lbs for 3s
QC .187, QC .250, PCB		25 lbs for 3s
Weight		85g
Packaging/unit		tray/25 pcs., box/150pcs.

Accessories

For details see datasheet Sockets and Accessories, KUP Relays

Product Code	Description
27E893	DIN socket (use 20C318 clip)
27E121	Track mount socket (use 20C314 clips)
27E043	Chassis mount/solder eyelet socket (use 20C254 clip)
27E046	Chassis mount/PCB socket (use 20C254 clip)
27E067	Chassis mount/quick connect socket (use 20C254 clip)
27E396	Snap-in/quick connect socket (use 20C254 clip)

KUMP Series Panel Plug-in Relay (Continued)

Dimensions

KUM bracket type



Seated Heights For KUM (open) Relays

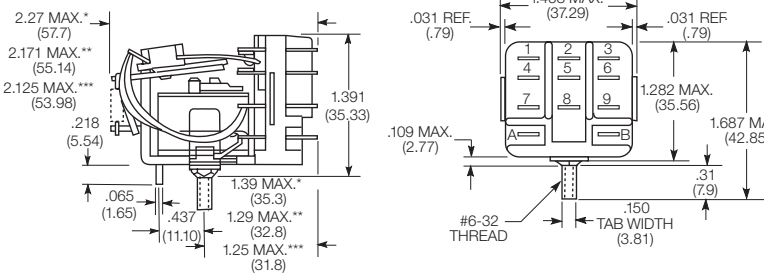
1.391" (35.33mm) for #6-32 stud with .218" (5.54mm) locating tab.

1.52" (38.6mm) for bracket with 2-#6 32 tapped holes.

1.282" (32.56mm) for #6-32 tapped core with .125" (3.18mm) or .218" (5.54mm) locating tab.

2.046" (51.97mm) for relay with printed circuit terminals.

KUM stud type



STUD TYPE also available with .125" (3.18mm) tab, as well as without stud and locating tab. Models without stud have core tapped #6-32 THREAD, .25" (6.4mm) minimum depth.

*Dimensions with .250" (6.35mm) terminals.

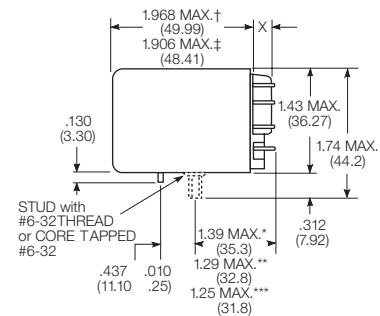
** Dimensions with .110" (2.79mm) or .205"(5.21mm) terminals.

*** Dimensions with .187" (4.75mm) terminals.

KUMP plain case



KUMP core / stud mount case



X Is For Terminal Dimensions. See Terminal Drawings.

KUMP top flange case



† Dimensions with .250" (6.35mm) terminals.

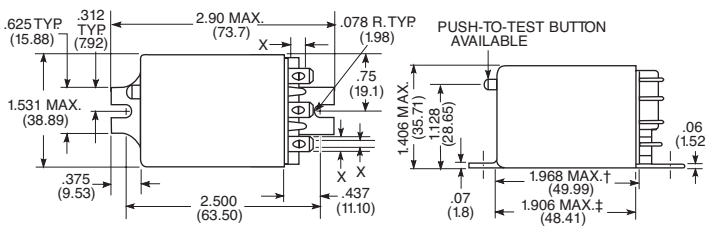
‡ Dimensions with .187" (4.75mm) and .205" (5.21mm) terminals.

*Dimensions with .250" (6.35mm) terminals.

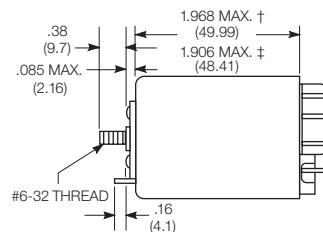
** Dimensions with .110" (2.79mm) or .205"(5.21mm) terminals.

*** Dimensions with .187" (4.75mm) terminals.

KUMP bracket mount case



KUMP stud on end case



KUMP Series Panel Plug-in Relay (Continued)

Relay front diagrams

Models with 6.35mm (.250) QC terminals

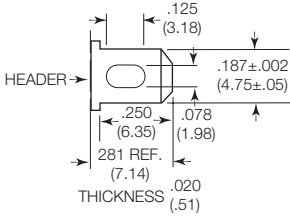


Models with all other terminals

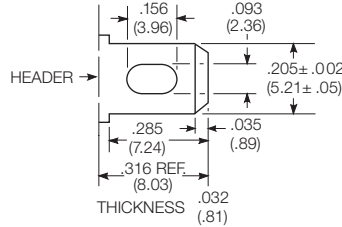


Terminal dimensions

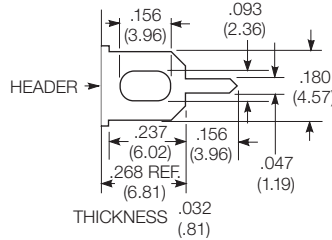
4.75mm (.187) quick connect



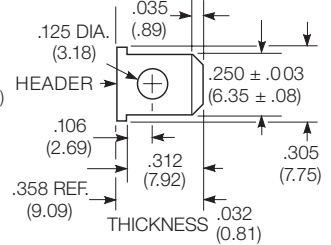
5.21mm (.205) quick connect



1.19mm (.047) printed circuit



6.35mm (.250) quick connect



Terminal assignment



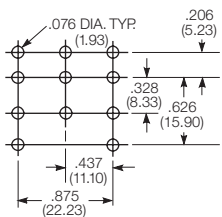
PCB layout

Bottom view on solder pins

1 form Z version
(Omit unnecessary holes for form X and Y types)



3 pole version
(Omit unnecessary holes for form A and 2 pole types)



KUMP Series Panel Plug-in Relay (Continued)

Product code structure		Typical product code		KUMP	-11	A	1	8	-120												
Type		KUM 15A open style relay KUMP 15A enclosed relay																			
Contact arrangement		<table border="0"> <tr> <td>1 1 form A (1 NO)</td> <td>2 1 form B (1 NC)</td> <td>3 1 form X (1 NO-DM)</td> </tr> <tr> <td>4 1 form Y (1 NC-DB)</td> <td>5 1 form C (1 CO)</td> <td>6 1 form Z (1 CO-DB-DM)</td> </tr> <tr> <td>7 2 form A (2 NO)</td> <td>8 2 form B (2 NC)</td> <td>11 2 form C (2 CO)</td> </tr> <tr> <td>12 3 form A (3 NO)</td> <td>13 3 form B (3 NC)</td> <td>14 3 form C (3 CO)</td> </tr> </table>								1 1 form A (1 NO)	2 1 form B (1 NC)	3 1 form X (1 NO-DM)	4 1 form Y (1 NC-DB)	5 1 form C (1 CO)	6 1 form Z (1 CO-DB-DM)	7 2 form A (2 NO)	8 2 form B (2 NC)	11 2 form C (2 CO)	12 3 form A (3 NO)	13 3 form B (3 NC)	14 3 form C (3 CO)
1 1 form A (1 NO)	2 1 form B (1 NC)	3 1 form X (1 NO-DM)																			
4 1 form Y (1 NC-DB)	5 1 form C (1 CO)	6 1 form Z (1 CO-DB-DM)																			
7 2 form A (2 NO)	8 2 form B (2 NC)	11 2 form C (2 CO)																			
12 3 form A (3 NO)	13 3 form B (3 NC)	14 3 form C (3 CO)																			
Coil Input		<table border="0"> <tr> <td>A AC, 50/60Hz</td> <td>D DC</td> </tr> </table>								A AC, 50/60Hz	D DC										
A AC, 50/60Hz	D DC																				
Mounting and options		<p>KUM</p> <table border="0"> <tr> <td>1 #6-32 mounting stud, 5.54mm (.218in) locating tab</td> <td>2 2-hole bracket, #6-32 tapped</td> </tr> <tr> <td>3 #6-32 tapped core, 3.18mm (.125in) locating tab</td> <td>4 #6-32 tapped core, 5.54mm (.218in) locating tab</td> </tr> <tr> <td>5 #6-32 tapped core, no locating tab</td> <td></td> </tr> </table> <p>KUMP</p> <ol style="list-style-type: none"> 1 Socket mount (plain) case 2 Socket mount (plain) case with push-to-test button 3 Socket mount (plain) case with indicator lamp¹⁾ 4 Socket mount (plain) case with indicator lamp and push-to-test button¹⁾ 5 Bracket mount case 6 Bracket mount case with push-to-test button 7 Bracket mount case with indicator lamp¹⁾ 8 Bracket mount case with indicator lamp and push-to-test button¹⁾ 9 Plain case with #6-32 stud and locating tab on end of case A Plain case with #6-32 stud and locating tab B Plain case with #6-32 stud and locating tab, push-to-test button C Plain case with #6-32 stud and locating tab, indicator lamp¹⁾ D Plain case with #6-32 stud and locating tab, push-to-test button and indicator lamp¹⁾ E Plain case with #6-32 tapped core and locating tab F Plain case with #6-32 tapped core and locating tab, push-to-test button G Plain case with #6-32 tapped core and locating tab, indicator lamp¹⁾ H Plain case with #6-32 tapped core and locating tab, push-to-test button and indicator lamp¹⁾ T Top flange case <p>¹⁾ Indicator lamps are available on models with the following coils: 6-24VAC and VDC, 110VDC and 120-240VAC. Only models with 120-240VAC coils are UL recognized.</p>								1 #6-32 mounting stud, 5.54mm (.218in) locating tab	2 2-hole bracket, #6-32 tapped	3 #6-32 tapped core, 3.18mm (.125in) locating tab	4 #6-32 tapped core, 5.54mm (.218in) locating tab	5 #6-32 tapped core, no locating tab							
1 #6-32 mounting stud, 5.54mm (.218in) locating tab	2 2-hole bracket, #6-32 tapped																				
3 #6-32 tapped core, 3.18mm (.125in) locating tab	4 #6-32 tapped core, 5.54mm (.218in) locating tab																				
5 #6-32 tapped core, no locating tab																					
Terminal and contact material		<table border="0"> <tr> <td>6 5.21mm (.205in) quick connect/solder; AgCdO</td> <td>8 4.75mm (.187in) quick connect/solder; AgCdO</td> </tr> <tr> <td>9 1.19mm (.047in) PCB, AgCdO</td> <td>G 6.35mm (.250in) quick connect/solder; AgCdO ²⁾</td> </tr> <tr> <td>R 5.21mm (.205in) quick connect/solder; AgSnOInO</td> <td>T 4.75mm (.187in) quick connect/solder; AgSnOInO</td> </tr> <tr> <td>U 1.19mm (.047in) PCB, AgSnOInO</td> <td>V 6.35mm (.250in) quick connect/solder; AgSnOInO ²⁾</td> </tr> </table> <p>²⁾ 6.35mm (.250in) quick connect/solder terminals are not available on 3 pole relays</p>								6 5.21mm (.205in) quick connect/solder; AgCdO	8 4.75mm (.187in) quick connect/solder; AgCdO	9 1.19mm (.047in) PCB, AgCdO	G 6.35mm (.250in) quick connect/solder; AgCdO ²⁾	R 5.21mm (.205in) quick connect/solder; AgSnOInO	T 4.75mm (.187in) quick connect/solder; AgSnOInO	U 1.19mm (.047in) PCB, AgSnOInO	V 6.35mm (.250in) quick connect/solder; AgSnOInO ²⁾				
6 5.21mm (.205in) quick connect/solder; AgCdO	8 4.75mm (.187in) quick connect/solder; AgCdO																				
9 1.19mm (.047in) PCB, AgCdO	G 6.35mm (.250in) quick connect/solder; AgCdO ²⁾																				
R 5.21mm (.205in) quick connect/solder; AgSnOInO	T 4.75mm (.187in) quick connect/solder; AgSnOInO																				
U 1.19mm (.047in) PCB, AgSnOInO	V 6.35mm (.250in) quick connect/solder; AgSnOInO ²⁾																				
Coil voltage		Coil code: please refer to coil versions table																			

Product Code	Arrangement	Material	Coil	Terminals	Mounting	Part Number
KUMP-11A18-24	2 form C; 2 CO	AgCdO	24 VAC	4.75mm (.187in) QC	Socket mount, plain case	6-1393116-3
KUMP-11A18-120			120 VAC			6-1393116-2
KUMP-11A18-240			240 VAC			6-1393116-4
KUMP-11D18-12			12 VDC			7-1393116-1
KUMP-11D18-24			24 VDC			7-1393116-2
KUMP-11D18-110			110 VDC			7-1393116-0
KUMP-14A18-24	3 form C, 3 CO		24 VAC			8-1393116-5
KUMP-14A18-120			120 VAC			8-1393116-4
KUMP-14D18-12			12 VDC			9-1393116-0
KUMP-14D18-24			24 VDC			9-1393116-1

Mouser Electronics

Authorized Distributor

Click to View Pricing, Inventory, Delivery & Lifecycle Information:

[TE Connectivity:](#)

[KUMP-11A58-120](#)