

4

3

2

1

THIS DRAWING IS UNPUBLISHED.

RELEASED FOR PUBLICATION

© COPYRIGHT

ALL RIGHTS RESERVED.

LOC

DIST

REVISIONS

P	LTR	DESCRIPTION	DATE	DWN	APVD
	A1	ECR-15-006704	30APR2015	GK	HMR

REPLACED BY OCEAN STYLE APPLICATOR PART  
NUMBER 2266728-1

FOR REPLACEMENT PARTS FOR APPLICATOR 1852640  
REFER TO ADDITIONAL PAGE(S). SPARE PARTS KIT (IF LISTED)  
WILL REMAIN AVAILABLE.

THE REPLACEMENT OCEAN STYLE APPLICATOR HAS THE  
SAME TERMINATOR/PRESS INTERFACE AS APPLICATOR  
1852640


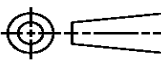
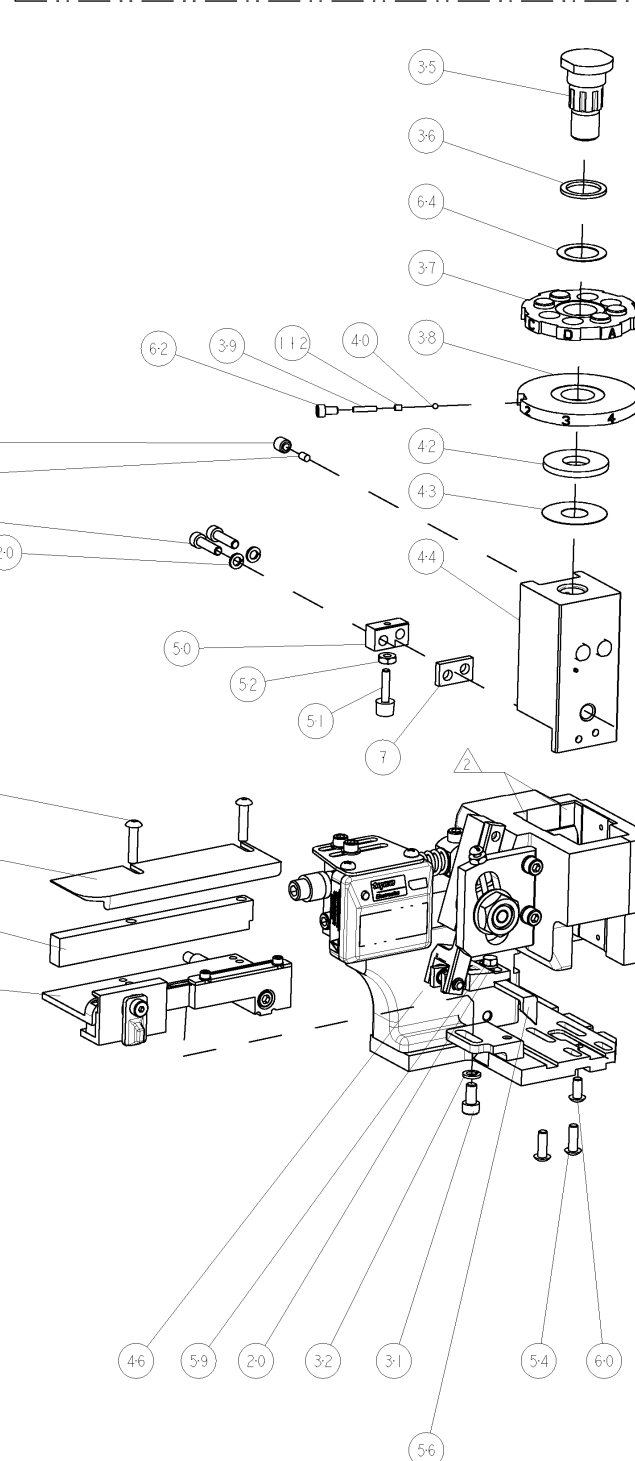
THIS DRAWING IS A CONTROLLED DOCUMENT.		DWN GOPALAKRISHNA HV		 TE Connectivity			
DIMENSIONS:		CHK RAGHAVENDRA					
		APVD RAGHAVENDRA		NAME SIDE FEED HDM APPLICATOR			
		PRODUCT SPEC					
		APPLICATION SPEC					
MATERIAL		WEIGHT		SIZE A3	CAGE CODE	DRAWING NO C- 1852640	RESTRICTED TO
FINISH		CUSTOMER DRAWING		SCALE		SHEET 1 OF 2	REV A1

Diagram illustrating the correct stroke for the POST-FEED and PRE-FEED operations:

- POST-FEED | 5/8 STROKE:** The diagram shows the tool (47) positioned at the end of the workpiece (91). The tool is angled to cut the end of the workpiece. A dimension line indicates a distance of 2 units from the end of the workpiece to the tool tip.
- PRE-FEED | 1/8 STROKE:** The diagram shows the tool (48) positioned at the end of the workpiece (91). The tool is angled to cut the end of the workpiece. A dimension line indicates a distance of 2 units from the end of the workpiece to the tool tip.
- PRE-FEED:** The diagram shows the tool (48) positioned at the end of the workpiece (91). The tool is angled to cut the end of the workpiece. A dimension line indicates a distance of 2 units from the end of the workpiece to the tool tip.



Exploded view diagram of a mechanical assembly. The diagram shows various components and their assembly sequence, indicated by numbered callouts (1 through 34) and assembly notes.

**Assembly Notes:**

- 2. 29mm [ .090 REF ]
- 5 REF
- 57 REF
- 4
- 4-1
- 5-7
- 9
- 1-2
- 1-1
- 8-9
- 1-0 1-3
- 5-4
- 8
- 3-4
- 1-9
- 2-2
- 2-0
- 2-1
- 1
- 6-7
- 6-6

The diagram illustrates the assembly of a mechanical component, likely a bracket or support, showing the relationship between various parts and their assembly sequence.

[illegible]

# Mouser Electronics

Authorized Distributor

Click to View Pricing, Inventory, Delivery & Lifecycle Information:

[TE Connectivity:](#)

[1852640-3](#)