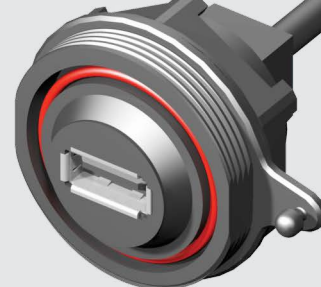


SCRUS-G-00.25-D-C5E



SCRUS-17-G-00.25-AMS-BC

## SCRUS, SCRES SERIES

## IP68 SEALED USB &amp; ETHERNET

Mates with:  
SCPU

## SPECIFICATIONS

For complete specifications and recommended panel hole layout see [www.samtec.com?SCRUS](http://www.samtec.com?SCRUS)

**Insulator Material:**  
PBT

**Contact Material:**  
Phosphor Bronze

**Wire:**  
20 AWG (Power)  
25 AWG (Signal)  
28 AWG (Drain)

**O-Ring:**  
Silicone

**Operating Temp Range:**  
-20 °C to +75 °C

**RoHS Compliant:**  
Yes

**Note:**  
Some lengths, styles and options are non-standard, non-returnable.

TYPE	SHELL SIZE	PLATING	WIRE LENGTH	END 1 OPTION	END 2 OPTION
<b>SCRUS</b> = Sealed Circular USB Receptacle Cable Assembly	<b>-17</b> (Standard USB only)  <b>-10</b> (Mini USB only)	<b>-G</b> = 30 μ" (0.76 μm) Gold on Contact, Nickel on Shell	<b>-00.25</b> = (0.25 m) 9.84" Cable  <b>-00.50</b> = (0.50 m) 19.68" Cable  Standard lengths (Assembled Length = Wire Length + (37.9 mm) 1.50")	<b>-AMS</b> = USB A Type, Sealed  <b>-BMS</b> = USB B Type, Sealed  <b>-MBS</b> = Mini USB B Type, Sealed	<b>-AM</b> = USB A Type, Not Sealed  <b>-BM</b> = USB B Type, Not Sealed  <b>-MB</b> = Mini USB B Type, Not Sealed  <b>-BC</b> = Blunt Cut
<b>DUST CAP</b> USB Flash Drive Cover: DCA-17-03 Device dimensions: 80.00 mm x 13.30 mm x 20.25 mm max. (31.80) 1.252 (39.50) 1.55 DIA <b>-MBS</b> <b>-AMS</b> <b>-AMS</b>					
<b>OTHER SOLUTIONS</b> • Termination for standard USB cable from panel-to-board See SCRUS Series.					

Mates with:  
SCPE

## SPECIFICATIONS

For complete specifications and recommended panel hole layout see [www.samtec.com?SCRES](http://www.samtec.com?SCRES)

**Insulator Material:**  
PBT

**Contact Material:**  
Phosphor Bronze

**Shield Material:**  
Phosphor Bronze

**Wire:**  
24 AWG

**O-Ring:**  
Silicone

**Overmold:**  
PA66

**Current Rating:**  
3.8 A per pin  
(1 pin powered)

**Operating Temp Range:**  
-40 °C to +70 °C

**RoHS Compliant:**  
Yes

**Note:**  
Some lengths, styles and options are non-standard, non-returnable.

TYPE	PLATING	WIRE LENGTH	END OPTION	C5E
<b>SCRES</b> = Sealed Circular Ethernet Receptacle Cable Assembly	<b>-G</b> = 50 μ" (1.27 μm) Gold on Contact, Nickel on Shell	<b>-00.25</b> = (0.25 m) 9.84" Cable  <b>-00.50</b> = (0.50 m) 19.68" Cable  Standard lengths	<b>-D</b> = Double Ended  <b>-BC</b> = Blunt Cut	<b>-C5E</b> = Cat 5e rating
Assembled Length = Wire Length + (12.70) .50 (48.45) 1.907 <b>END NO. 1</b> <b>-D SHOWN</b> <b>END NO. 2</b>				
<b>DUST CAP &amp; PANEL PLUG</b> • Dust Cap: DCA-17-01 • Panel Plug: SCPPA-17-01				
<b>OTHER SOLUTIONS</b> • Termination for standard ethernet cable from panel to board				

Due to technical progress, all designs, specifications and components are subject to change without notice.

[WWW.SAMTEC.COM](http://WWW.SAMTEC.COM)

All parts within this catalog are built to Samtec's specifications.

Customer specific requirements must be approved by Samtec and identified in a Samtec customer-specific drawing to apply.

# Mouser Electronics

Authorized Distributor

Click to View Pricing, Inventory, Delivery & Lifecycle Information:

## Samtec:

[SCRES-G-00.50-D-C5E](#) [SCRES-G-00.25-D](#) [SCRES-G-00.25-D-C5E](#) [SCRES-G-00.25-BC-C5E](#) [SCRES-G-01.00-BC-C5E](#) [SCRES-G-05.00-BC](#) [SCRES-G-00.25-BC](#) [SCRES-G-00.90-D-C5E](#) [SCRES-G-02.00-D-C5E](#) [SCRES-G-03.00-D-C5E](#) [SCRES-G-00.17-D-C5E](#) [SCRES-G-02.00-BC-C5E](#) [SCRES-G-05.00-D](#) [SCRES-G-00.20-D-C5E](#) [SCRES-G-00.21-D](#) [SCRES-G-00.90-BC](#) [SCRES-G-03.00-BC-C5E](#) [SCRES-G-03.00-D](#) [SCRES-G-00.20-BC](#) [SCRES-G-01.00-D](#) [SCRES-G-04.00-D-C5E](#) [SCRES-G-05.00-BC-C5E](#) [SCRES-G-00.17-BC](#) [SCRES-G-00.35-D-C5E](#) [SCRES-G-00.50-BC-C5E](#) [SCRES-G-00.50-D](#) [SCRES-G-00.18-D-C5E](#) [SCRES-G-00.75-D-C5E](#) [SCRES-G-00.92-BC-C5E](#) [SCRES-G-02.00-D](#) [SCRES-G-00.17-BC-C5E](#) [SCRES-G-00.17-D](#) [SCRES-G-01.00-D-C5E](#) [SCRES-G-01.50-BC](#) [SCRES-G-01.50-BC-C5E](#) [SCRES-G-05.00-D-C5E](#) [SCRES-G-06.00-D](#) [SCRES-G-00.18-D](#) [SCRES-G-00.30-D](#) [SCRES-G-00.60-D](#) [SCRES-G-01.00-BC](#) [SCRES-G-02.00-BC](#) [SCRES-G-00.75-D](#) [SCRES-G-01.50-D](#) [SCRES-G-00.80-D-C5E](#) [SCRES-G-00.92-BC](#) [SCRES-G-00.50-BC](#) [SCRES-G-00.30-D-C5E](#) [SCRES-G-01.50-D-C5E](#) [SCRES-G-00.70-BC-C5E](#) [SCRES-G-03.50-BC-C5E](#) [SCRES-G-00.80-BC](#) [SCRES-G-01.80-D-C5E](#) [SCRES-G-00.42-D-C5E](#) [SCRES-G-04.00-BC-C5E](#) [SCRES-G-01.25-D-C5E](#) [SCRES-G-02.50-D](#) [SCRES-G-04.85-D-C5E](#) [SCRES-G-00.40-D](#) [SCRES-G-01.20-BC](#)