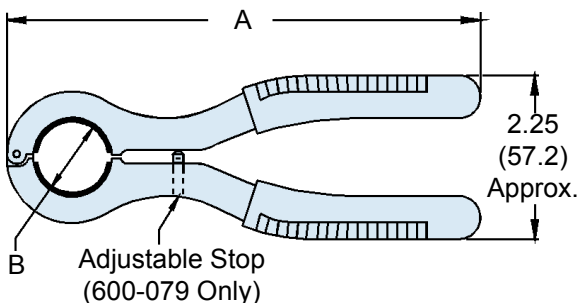
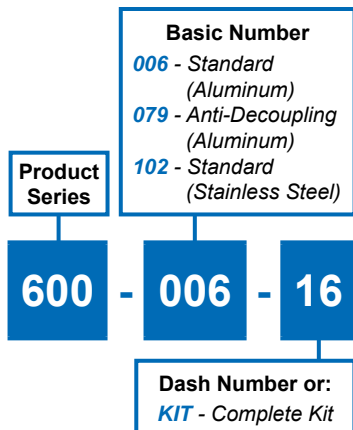


# 600-006, 600-079 & 600-102 Circular Backshell Assembly Wrenches and Replacement Insert Pads



### APPLICATION NOTES

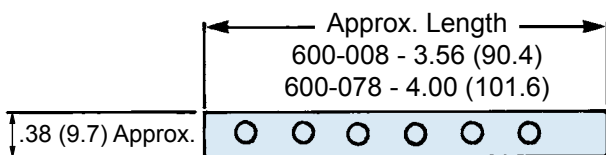
- Grips are covered in vinyl.
- Metric dimensions (mm) are indicated in parentheses.

600-006 and 600-102 (Standard Coupling)			
Dash No.	Shell Size Ref.	A Ref.	B Ref.
08	08/09	6.50 (165.1)	.617 (15.7)
10	10/11	6.50 (165.1)	.734 (18.6)
12	12/13	6.50 (165.1)	.858 (21.8)
14	14/15	6.50 (165.1)	.984 (25.0)
16	16/17	6.50 (165.1)	1.112 (28.2)
18	18/19	7.00 (177.8)	1.198 (30.4)
20	20/21	7.00 (177.8)	1.323 (33.6)
22	22/23	7.00 (177.8)	1.448 (36.8)
24	24/25	7.00 (177.8)	1.573 (40.0)
28	28	7.00 (177.8)	1.969 (50.0)

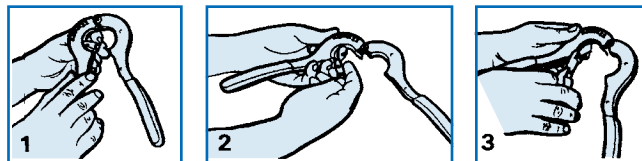
600-079 and 600-103 (Anti-Decoupling)			
Dash No.	Shell Size Ref.	A Ref.	B Ref.
01	08/09	7.38 (187.5)	.659 (16.7)
02	10/11	7.50 (190.5)	.783 (19.9)
03	12/13	7.50 (190.5)	.906 (23.0)
04	14/15	7.50 (190.5)	1.035 (26.3)
05	16/17	7.50 (190.5)	1.140 (29.0)
06	18/19	7.75 (196.9)	1.260 (32.0)
07	20/21	8.00 (203.2)	1.383 (35.1)
08	22/23	8.25 (209.6)	1.510 (38.4)
10	24/25	8.25 (209.6)	1.630 (41.4)

Consult Factory for Larger Sizes

## Replacement Insert Pads



- 600-008-01 Fits standard coupling series sizes 08 through 24, color black.
- 600-078-01 Fits anti-decoupling coupling sizes 09 through 23, color red.
- 600-078-02 Fits anti-decoupling coupling size 25, color red.



### Replacing Insert Pads in Backshell Assembly Tools

- The urethane pad strips are mechanically retained without adhesive. To remove, grasp an edge of the strip and pull loose from tool.
- Beginning with retaining hole adjacent to assembly tool hinge, insert first retaining knob on strip into hole. Continue inserting knobs on pad strip into remaining holes on tool.
- Using side-cutters or scissors, trim end of pad strip flush with metal surface of assembly tool. Retain remainder of strip for replacement in other size assembly tools.

# Mouser Electronics

Authorized Distributor

Click to View Pricing, Inventory, Delivery & Lifecycle Information:

## Glenair:

[600-006-08](#) [600-006-12](#) [600-006-18](#) [600-006-20](#) [600-006-22](#) [600-006-28](#) [600-006-32](#) [600-006-36](#) [600-006-40](#)  
[600-006-44](#) [600-008-03](#) [600-079-01](#) [600-079-02](#) [600-079-03](#) [600-079-04](#) [600-079-05](#) [600-079-06](#) [600-079-07](#)  
[600-079-08](#) [600-079-10](#) [600-102-08](#) [600-102-10](#) [600-102-12](#) [600-102-16](#) [600-102-18](#) [600-102-22](#) [600-102-24](#)  
[600-102-28](#) [600-102-KIT](#) [600-103-01](#) [600-103-02](#) [600-103-03](#) [600-103-04](#) [600-103-05](#) [600-103-06](#) [600-103-07](#)  
[600-103-08](#) [600-006-14](#) [600-006-16](#) [600-006-K](#) [600-008](#) [600-008-01](#) [600-008-02](#) [600-102-K](#) [600-102-20](#) [600-079-](#)  
[K](#) [600-079-KIT](#) [600-006-KC](#) [600-006-10](#) [600-006-24](#) [600-102-14](#)