

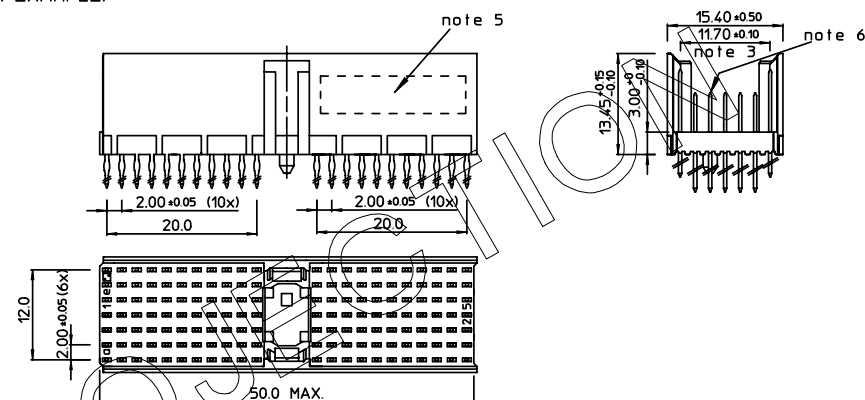
REV.	DATE	DESCRIPTION	BY	C'K'D
A	2001-09-14	CONVERSION REVISION 02	KN	
B	2002-05-28	EC B20086	MF	
C	2005-10-17	105-0196	ALEX B	BKP
D	2006-07-12	106-0110	VIVEK	BKP

LOADING PATTERN MATING SIDE

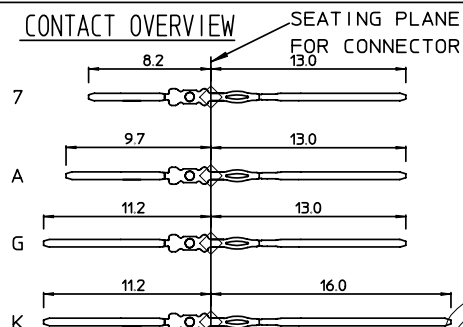
f	K	K	K	K	K	K	K	K	K	K	K				K	K	K	K	K	K	K	K	K	K
e	A	A	A	A	A	A	A	A	A	A	A				A	A	A	A	A	A	A	A	A	A
d	A	A	A	A	A	A	A	A	A	A	7				A	A	A	A	A	A	A	A	A	A
c	A	A	A	A	A	A	A	A	A	G	A				A	A	A	A	A	A	A	A	A	A
b	A	A	A	A	A	A	A	A	A	A	A				A	A	A	A	A	A	A	A	A	A
a	A	A	A	A	A	A	A	A	A	A	A				A	A	A	A	A	A	A	A	A	A
z	K	K	K	K	K	K	K	K	K	K	K				K	K	K	K	K	K	K	K	K	K
P	0				0					1	0				1					2				2
S	1				5					0					5					0				5

SHEET NR. : 714

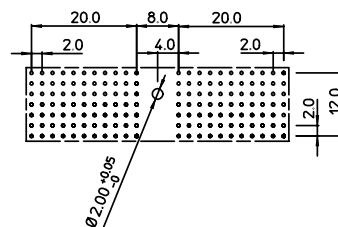
LOADED CONNECTOR ASSEMBLY
(FOR EXAMPLE)



CONTACT OVERVIEW



LAY-OUT P.C.B.-HOLE






LEAD FREE INDICATOR : LF = LEAD FREE
(DIGIT 15 & 16)

HM2P07PKG1A4

PLATING CODE (DIGIT 13 AND 14)
(REF DWG No. BS.C.201844.003)

NOTES:

1. THIS PRODUCT IS CSA APPROVED.
2. THIS PRODUCT IS UL RECOGNIZED.
3. MEASURED AT THE BOTTOM.
4. MATERIAL CONTACT: PHOSPHORBRONZE
HOUSING: CREAM WHITE GLASSFILLED
POLYESTER UL-94V0
5. CONNECTOR PRINTED WITH P/N AND DATE CODE.
6. FOR ACTUAL CONTACT LOADINGS, SEE LOADING PATTERN
MATING SIDE.
7. SHAPE OF CONNECTOR HOUSING CAN ALTER
DEPENDING ON PRODUCTION LOCATION.
8. THE PRODUCT (LF) MEETS EUROPEAN UNION DIRECTIVES AND OTHER COUNTRY
REGULATIONS AS DESCRIBED IN GS-22-008
9. FOR RECOMMENDED PTH DIMENSIONS REFER DRAWING : BS.A .201572.001

1DEC ± 0.2 2DEC ± 0.1 ANGLES $\pm 1^\circ$	APPR.	DATE	SIGN.	LOADING PATTERN OVERVIEW	
	DRAFT	1998-09-14	M.Frel	CAT. No. HM2P07PKG1A4----	
	CHECKED				www.fciconnect.com
	PROD_MGR				
WE RESERVE THE RIGHT TO CHANGE DIMENSIONS OR REQUIREMENTS WITHOUT PRIOR NOTICE.	PR_ENG_MGR				SCALE
	PR_MGT_MGR				
ALL DIMENSIONS IN MM	REFERENCES			BS,C ,201843,613	
 				DRAWING No. CUSTOMER DRAWING	
				D	REVISION

Mouser Electronics

Authorized Distributor

Click to View Pricing, Inventory, Delivery & Lifecycle Information:

[FCI / Amphenol:](#)

[HM2P07PKG1A4GFLF](#) [HM2P07PKG1A4GF](#)