

4

3

2

1


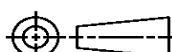
THIS DRAWING IS UNPUBLISHED.	RELEASED FOR PUBLICATION
© COPYRIGHT	ALL RIGHTS RESERVED.

LOC	DIST	REVISIONS					
		P	LTR	DESCRIPTION	DATE	DWN	APVD
			B1	ECR-14-003113	03MAR2014	GK	HMR

REPLACED BY OCEAN STYLE APPLICATOR PART
NUMBER 2151276-1

FOR REPLACEMENT PARTS FOR APPLICATOR 567421
REFER TO ADDITIONAL PAGE(S). SPARE PARTS KIT (IF LISTED)
WILL REMAIN AVAILABLE.

THE REPLACEMENT OCEAN STYLE APPLICATOR HAS THE
SAME TERMINATOR/PRESS INTERFACE AS APPLICATOR
567421

THIS DRAWING IS A CONTROLLED DOCUMENT.		DWN	GOPALAKRISHNA HV		 TE Connectivity								
		CHK	RAGHAVENDRA										
DIMENSIONS:		TOLERANCES UNLESS OTHERWISE SPECIFIED:		APVD	RAGHAVENDRA		NAME						
		0 PLC ±		PRODUCT SPEC		SIDE FEED HDM APPLICATOR							
		1 PLC ±		APPLICATION SPEC									
		2 PLC ±											
		3 PLC ±											
		4 PLC ±											
		ANGLES ±											
MATERIAL		FINISH		WEIGHT		SIZE		CAGE CODE	DRAWING NO	RESTRICTED TO			
						A 3			©- 567421				
				CUSTOMER ACCESSIBLE PRODUCTION DRAWING		SCALE		SHEET	1	OF	2	REV	B1

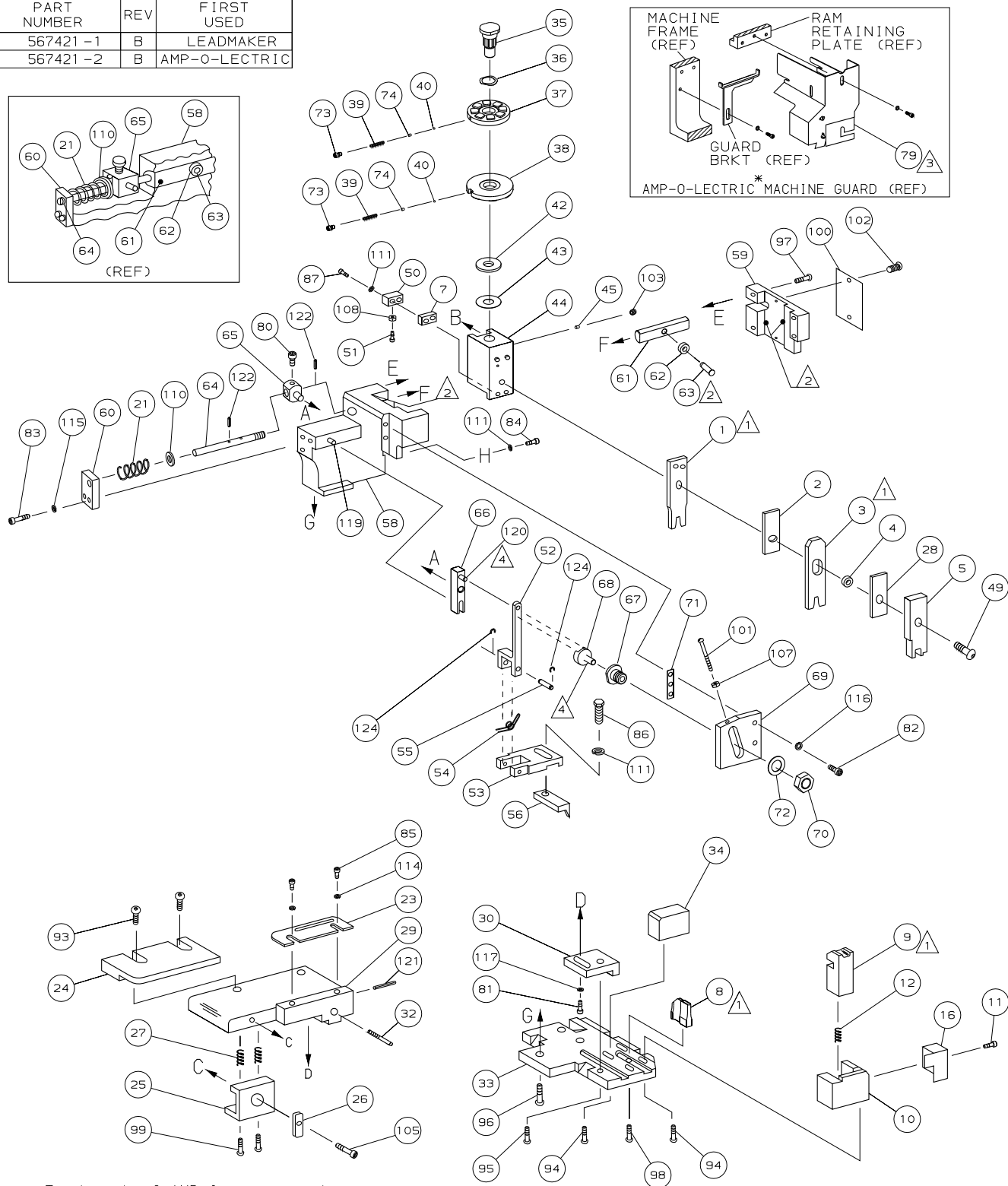
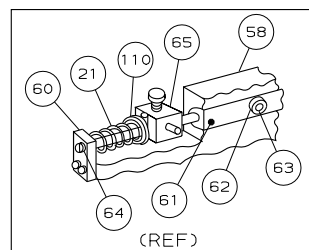
MACHINE FRAME (REF)

RAM RETAINING PLATE (REF)

GUARD BRKT (REF)

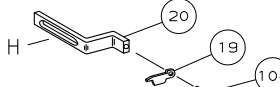
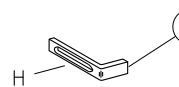
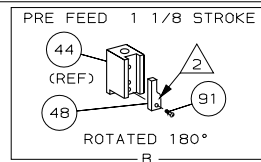
79 $\frac{3}{16}$

AMP-0-ELECTRIC MACHINE GUARD (REF)



POST FEED 1 5/8 STROKE

Diagram showing the post feed mechanism in the rotated position. The post (47) is rotated 180° and is positioned to feed the workpiece (2). The post is labeled (44) (REF). The workpiece is labeled (91). The post is labeled (47). The workpiece is labeled (2). The text "ROTATED 180°" is shown below the diagram.



LOC A
DIST 66

CRIMPING DATA						
PAD LTR	CRIMP HEIGHT		WIRE SIZE	WIRE STRIP LENGTH		
A	.056		18			
B	.052		18 1/2			
C	.048		20			
D	NOT		USED			
CRIMP	SIZE	TYPE	FEED	APPL INST		
WIRE	.080	F	.571	AI	8040	
INSUL	.110	F				
WIRE RANGE 20-18		INSULATION RANGE .055-.091		SET UP GAGE 458637-1	LAYOUT L1420	

TERMINAL NAME: 02.5MM CONTACT					
PIN	CONTACT				
927796-2	927784-2				

1. RECOMMENDED SPARE PARTS.
2. GREASE LIGHTLY.
3. GUARD MUST BE IN PLACE WHEN OPERATING APPLICATOR IN AMP-O-ELECTRIC MACHINE.
4. LUBRICATE DAILY USING NO. 20 MACHINE OIL.
5. ITEMS WITH QTY OF REF SPECIFIED (EXCEPT ITEM 79) ARE USED ON ITEM 46.

						120
						129
						128
						127
						126
						125
REF	REF	-	A	21045-3	RING, RET "C" (ø.187) FD FING PIN	124
						123
REF	REF	-	A	5-21028-1	PIN, SLT SPR (ø.125x.50) ADJ ROD	122
1	1	-	A	4-21028-0	PIN, SLT SPR (ø.093x.75) ST GDE PL	121
REF	REF	-	A	1-21030-1	PIN, DOWEL (ø.187x.50) LEVER	120
REF	REF	-	A	1-21030-6	PIN, DOWEL (ø.187x1.25) HOUSING	119
						118
1	1	-	A	21024-5	WASHER, LOCK (#10) ADJ BLOCK	117
REF	REF	-	A	21024-5	WASHER, LOCK (#10) ADJ PLATE	116
REF	REF	-	A	21024-5	WASHER, LOCK (#10) FEED GDE ROD	115
2	2	-	A	21024-2	WASHER, LOCK (#4) FRONT STP GUIDE	114
						113
						112
4	4	-	A	21024-4	WASHER, LOCK (#8) STRIPPER	111
REF	REF	-	A	21899-4	WASHER, FLAT (ø5/16) SCREW ADJ	110
						109
1	1	-	A	21018-5	NUT, HEX (NO.6) HOLDDOWN	108
REF	REF	-	A	21018-5	NUT, HEX (6-32) FEED ADJ	107
						106
1	1	-	A	22353-8	SCR, SHLD (ø.187x.25) DRAG LEVER	105
1	-	-	A	456567-1	SCR, SHLD (ø.188x.12) STRIP	104
1	1	-	A	21009-2	SCR, SKT SET (1/4-20x.25 LW) RAM	103
2	2	-	A	21017-2	SCR, DRIVE (#2x.19) ID PLATE	102
REF	REF	-	A	6-23715-5	SCR, PAN HD (6-32x1.50) FEED ADJ	101
1	1	-	B	461264-1	PLATE, IDENTIFICATION	100
2	2	-	A	2-21002-9	SCR, BHC (10-32x.75) DRAG	99
1	1	-	A	22733-8	SCR, BHC (8-32x.38 LW) ANVIL	98
REF	REF	-	A	2-21002-9	SCR, BHC (10-32x.75) CAP	97
REF	REF	-	A	2-22733-8	SCR, BHC (1/4-20x.62) HOUSING	96
REF	REF	-	A	2-21002-7	SCR, BHC (10-32x.50) SG ADJ BLOCK	95
4	4	-	A	2-21002-2	SCR, BHC (8-32x.50) SHEAR	94
2	2	-	A	2-21002-1	SCR, BHC (8-32x.38) R STRIP GUIDE	93
						92
1	1	-	A	1-21002-7	SCR, BHC (6-32x.38) CAM	91
						90
						89
						88
2	2	-	A	2-21000-8	SCR, SHC (8-32x.62) DEP-HOLD	87
1	1	-	A	2-22603-0	SCR, HEX HD (8-32x.31) FEED FINGER	86
2	2	-	A	1-21000-3	SCR, SHC (4-40x.5) FD ST GUIDE	85
1	1	-	A	2-21000-7	SCR, SHC (8-32x.50) STRIPPER	84
REF	REF	-	A	3-21000-7	SCR, SHC (10-32x.75) FEED ROD GD	83
REF	REF	-	A	3-21000-6	SCR, SHC (10-32x.62) FD ADJ BLK	82
1	1	-	A	3-21000-4	SCR, SHC (10-32x.38) SG ADJ BL	81
REF	REF	-	A	3-21000-4	SCR, SHC (10-32x.38) PIVOT BLK	80
REF	-	-	B	455749-1	GUARD, WINDOW	79
						78
						77
						76
						75
2	2	-	A	690603-1	SPRING, ASSIST	74
2	2	-	A	23030-1	SCR, SHC (6-32x.25) CP DISC	73
REF	REF	-	A	458109-1	WASHER, SPECIAL	72
REF	REF	-	A	690517-1	SPACER	71

	-2	-1	U/M	DWG SIZE	PART NO	DESCRIPTION	ITEM NO
					← REVISION OF EACH ASSY NO (WHEN BLANK, USE DWG REVISION)		
QTY REQD PER ASSY				PARTS LIST			

TERMINAL NAME: Ø2.5MM CONTACT				
PIN	CONTACT			
927796-2	927784-2			

REF	REF	-	B	22594-8	NUT, HEX (1/2-20)	70
REF	REF	-	B	240628-1	PLATE, ADJUSTMENT	69
REF	REF	-	B	240626-1	SHAFT, PIVOT	68
REF	REF	-	B	240633-1	BUSHING	67
REF	REF	-	A	455680-1	LEVER, INTERMEDIATE	66
REF	REF	-	B	240629-1	BLOCK, PIVOT	65
REF	REF	-	A	240632-2	SCREW, ADJ FEED ROD	64
REF	REF	-	B	240659-3	PIN, CAM ROLLER	63
REF	REF	-	B	240658-1	ROLLER, CAM	62
REF	REF	-	B	454398-2	ROD, FEED	61
REF	REF	-	A	454178-1	GUIDE, FEED ROD	60
REF	REF	-	C	454220-1	CAP, RAM	59
REF	REF	-	D	454485-1	HOUSING	58
						57
1	1	-	B	458537-1	PAWL, FEED	56
REF	REF	-	B	240624-1	PIN, FEED FINGER	55
REF	REF	-	B	691499-1	SPRING, FEED FINGER	54
REF	REF	-	B	690541-1	FINGER, FEED	53
REF	REF	-	A	455679-1	LEVER, TERMINAL FEED ARM	52
1	1	-	A	811242-2	BUMPER, HOLDDOWN	51
1	1	-	A	690753-1	SPACER, TONKER	50
1	1	-	A	7-21002-9	BOLT, CRIMPER (5/16x1.00)	49
1	-	-	B	690602-5	CAM, PRE-FEED 1 1/8 ST	48
-	1	-	B	690501-4	CAM, POST-FEED 1 5/8 ST	47
1	1	-	B	459456-1	APPLICATOR, BASIC (SUBASSY)	46
1	1	-	A	690191-1	PLUG, NYLON	45
1	1	-	C	455673-1	RAM	44
1	1	-	A	690125-1	WASHER, LAMINATED	43
1	1	-	A	690124-1	WASHER, RAM	42
						41
2	2	-	A	23241-6	BALL, STEEL	40
2	2	-	A	690170-1	SPRING, COMPRESSION	39
1	1	-	C	690142-1	DISC, INSULATION	38
1	1	-	B	690141-5	DISC, WIRE	37
1	1	-	A	22480-5	WASHER, SPRING	36
1	1	-	B	690212-1	POST, RAM	35
1	1	-	B	692776-2	SUPPORT, TERMINAL	34
REF	REF	-	D	455675-1	PLATE, BASE	33
1	1	-	A	690432-3	SCREW, ADJUSTMENT	32
						31
REF	REF	-	B	455689-1	BLOCK, STRIP GUIDE ADJ	30
1	1	-	D	2-458144-8	PLATE, STRIP GUIDE	29
1	1	-	C	455888-7	SPACER, FRONT SHEAR DEP	28
2	2	-	A	1-22284-0	SPRING, DRAG	27
1	1	-	B	240793-1	LEVER, DRAG RELEASE	26
1	1	-	B	240792-1	DRAG, TERMINAL	25
1	1	-	D	7-690504-4	GUIDE, STRIP (REAR)	24
1	1	-	A	690438-1	GUIDE, STRIP (FRONT)	23
-	1	-	B	690472-2	STRIPPER	22
REF	REF	-	A	4-22284-9	SPRING, FEED RETURN	21
1	-	-	B	458950-1	STRIPPER, WIRE STOP	20
1	-	-	B	458949-1	STRIPPER	19
						18
						17
1	1	-	B	691667-1	GUARD, CHIP (FRONT)	16
						15
						14
						13
1	1	-	A	5-22280-0	SPRING, SHEAR	12
1	1	-	B	690461-1	STOP, SHEAR	11
1	1	-	C	690459-1	HOLDER, SHEAR (FRONT)	10
1	1	-	C	454276-1	SHEAR, FLOAT (FRONT)	9
1	1	-	D	1-854014-9	ANVIL	8
1	1	-	C	4-240641-0	SPACER, DEPRESSOR (REAR)	7
						6
1	1	-	C	1-455889-4	DEPRESSOR, SHEAR (FRONT)	5
1	1	-	B	238011-7	SPACER, BLOCK CRIMPER	4
1	1	-	C	2-456134-2	CRIMPER, INSULATION	3
1	1	-	C	1-455888-3	SPACER, CRIMPER	2
1	1	-	C	2-456405-7	CRIMPER, WIRE	1

-2	-1	U/M	DWG SIZE	PART NO	DESCRIPTION	ITEM NO
		X	← REVISION OF EACH ASSY NO (WHEN BLANK, USE DWG REVISION)			
QTY REQD PER ASSY			PARTS LIST			

ENSIONS IN INCHES. NOT SCALE PRINT.	MATL	-		HT TR	-		FIN	-	
ANCES UNLESS ERWISE SPECIFIED:	DR P.MATHIAS	6/20/91	APP	6-24-91 BA WOLFE	AMP		AMP Incorporated Harrisburg, PA 17105-3608		
C DEC ± C DEC ± C DEC ± C DEC ± ES ±	CHK	6-24-91 P MARTZ	REL	6-25-91 MCPHERSON					
TEXTURE: ✓	NAME SIDE FEED HDM APPLICATOR						MACHINE MINI	REF APPL	
OVE BURRS, BREAK MP EDGES R.015 MAX	SCALE NTS	D	DWG NO	567421		SHEET 1 OF 1	REV B		

	A
--	-----

Mouser Electronics

Authorized Distributor

Click to View Pricing, Inventory, Delivery & Lifecycle Information:

[TE Connectivity:](#)

[567421-1](#)