

THIS DRAWING IS UNPUBLISHED.

RELEASED FOR PUBLICATION

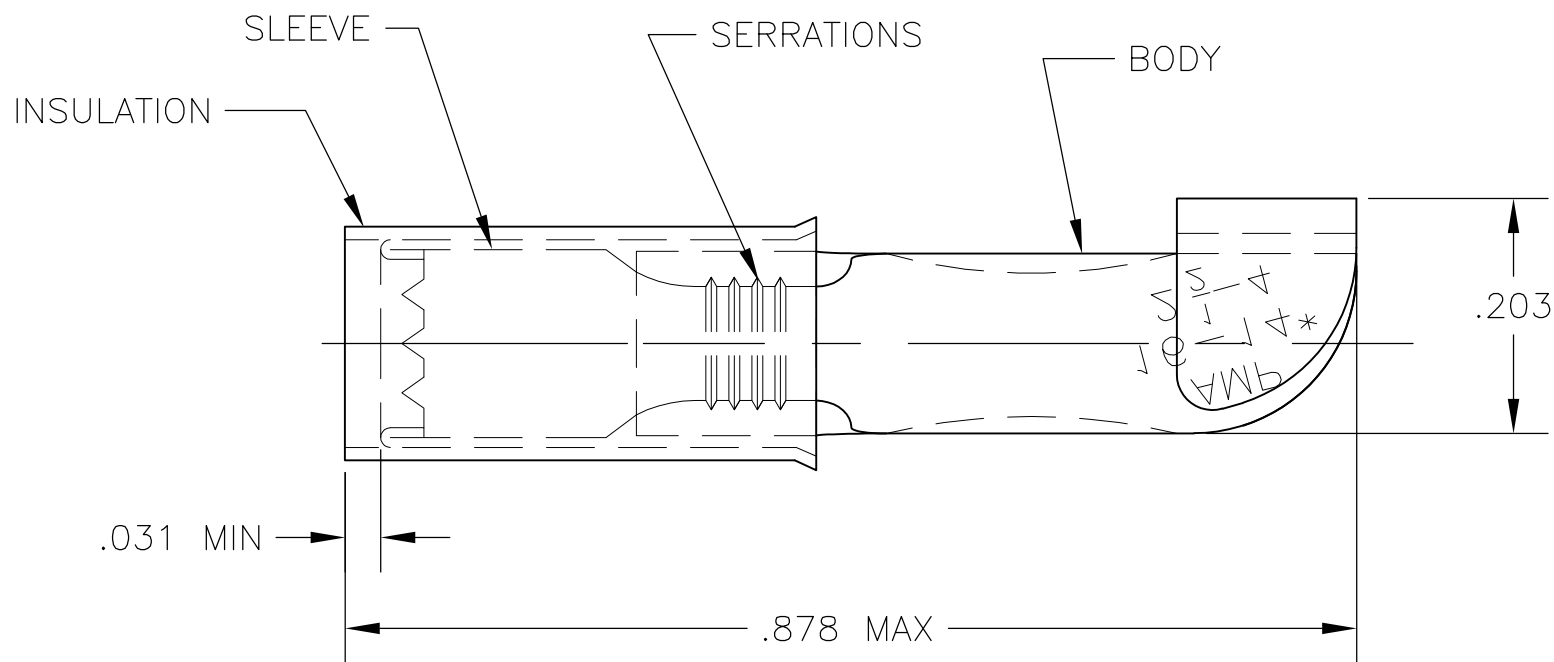
© COPYRIGHT - By -

ALL RIGHTS RESERVED.

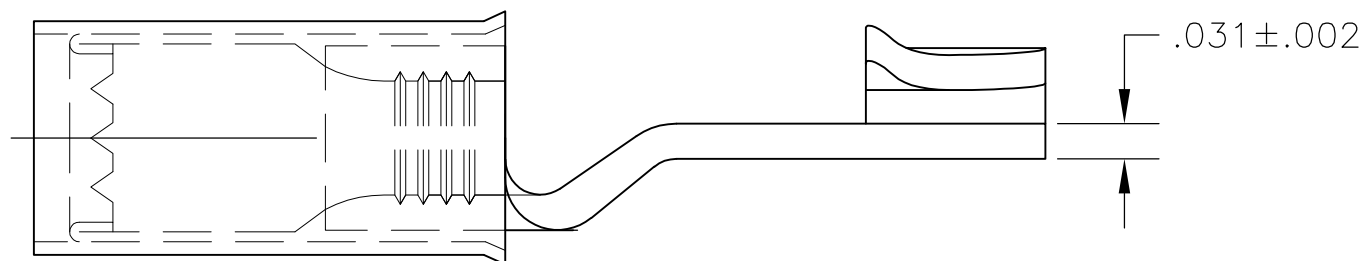
LOC G DIST 02

REVISIONS

| P | LTR | DESCRIPTION | DATE | DWN | APVD |
|---|-----|---------------------------|---------|-----|------|
| | G2 | REVISED PER ECO-11-004917 | 11MAR11 | RK | HMR |



1 FOR .115 TO .170 WIRE INSULATION DIA.



OBSOLETE

| | | | |
|-----------------|--------------------------|--|----------------------|
| 100 | LOOSE PIECE, BOX | INSULATION: NYLON, COLOR BLUE SLEEVE: COPPER PER ASTM B152 BODY: COPPER PER ASTM B152 TIN PLATE PER ASTM B545 | 8-32448-1 |
| 4000 | 32448 ON TAPE | | 2-32448-1 |
| 1 | WIRE TERMINAL | | 32448 |
| QTY | DESCRIPTION | MATERIAL | PART NO |

| | | | | |
|--|------------------|------------------------------|---------------------------------------|-----------------|
| THIS DRAWING IS A CONTROLLED DOCUMENT. | | DWN jr_ruth 13MAR09 | TE Connectivity | |
| DIMENSIONS: INCHES | | CHK TOM MICHIELUTTI 13MAR09 | | |
| TOLERANCES UNLESS OTHERWISE SPECIFIED: | | APVD TOM MICHIELUTTI 13MAR09 | NAME | |
| 0 PLC ± - | | PRODUCT SPEC | TERMINAL, PIDG | |
| 1 PLC ± - | | APPLICATION SPEC | KNIFE DISCONNECT, WIRE SIZE 16-14 AWG | |
| 2 PLC ± - | | WEIGHT - | SIZE A3 | CAGE CODE 00779 |
| 3 PLC ± .008 | | CUSTOMER DRAWING | DRAWING NO C-32448 | RESTRICTED TO - |
| 4 PLC ± - | | | SCALE 8:1 | SHEET 1 OF 1 |
| ANGLES ± 5' | | | REV G2 | |
| MATERIAL SEE TABLE | FINISH SEE TABLE | | | |

Mouser Electronics

Authorized Distributor

Click to View Pricing, Inventory, Delivery & Lifecycle Information:

[TE Connectivity:](#)

[32448](#)