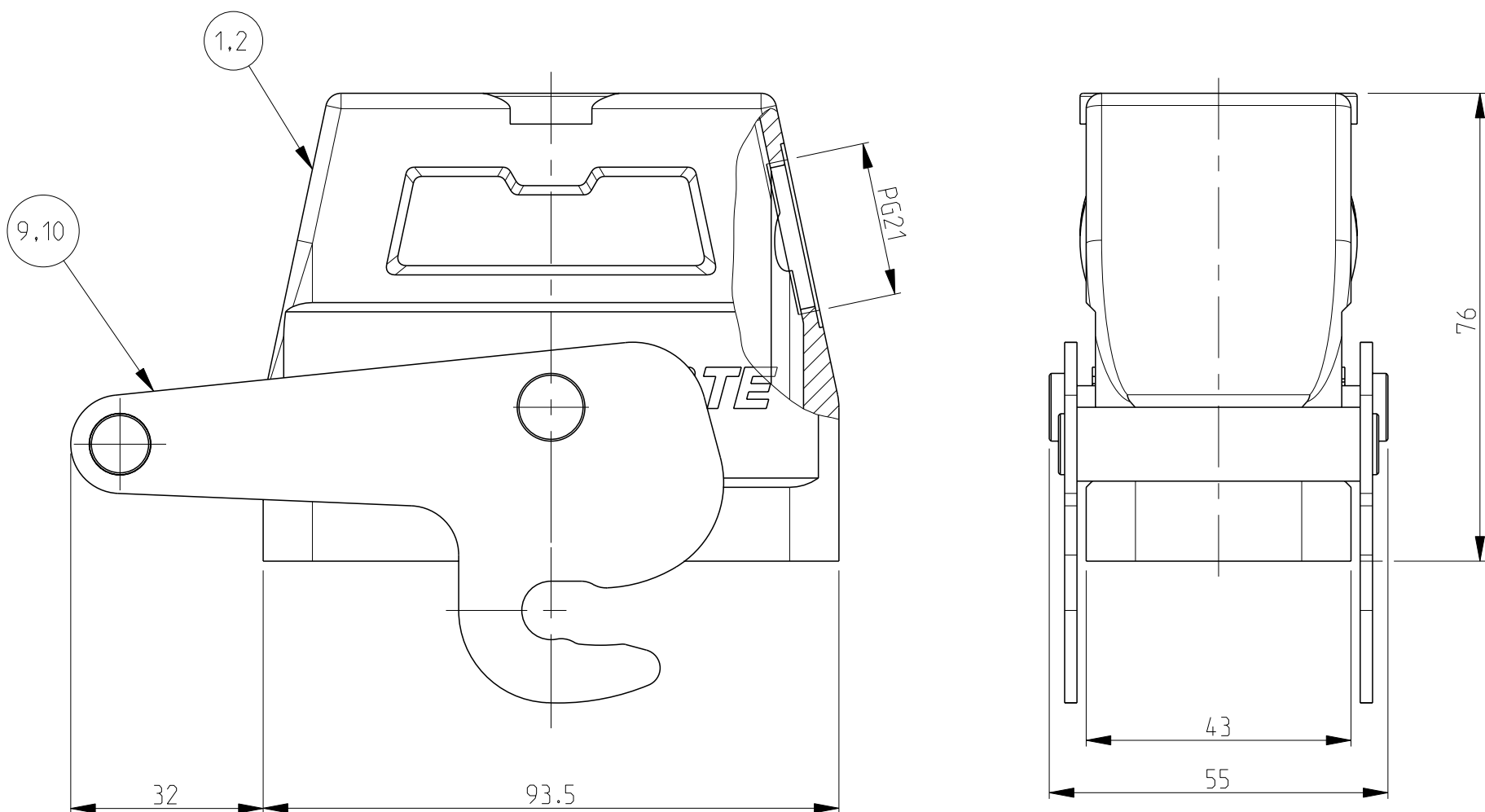
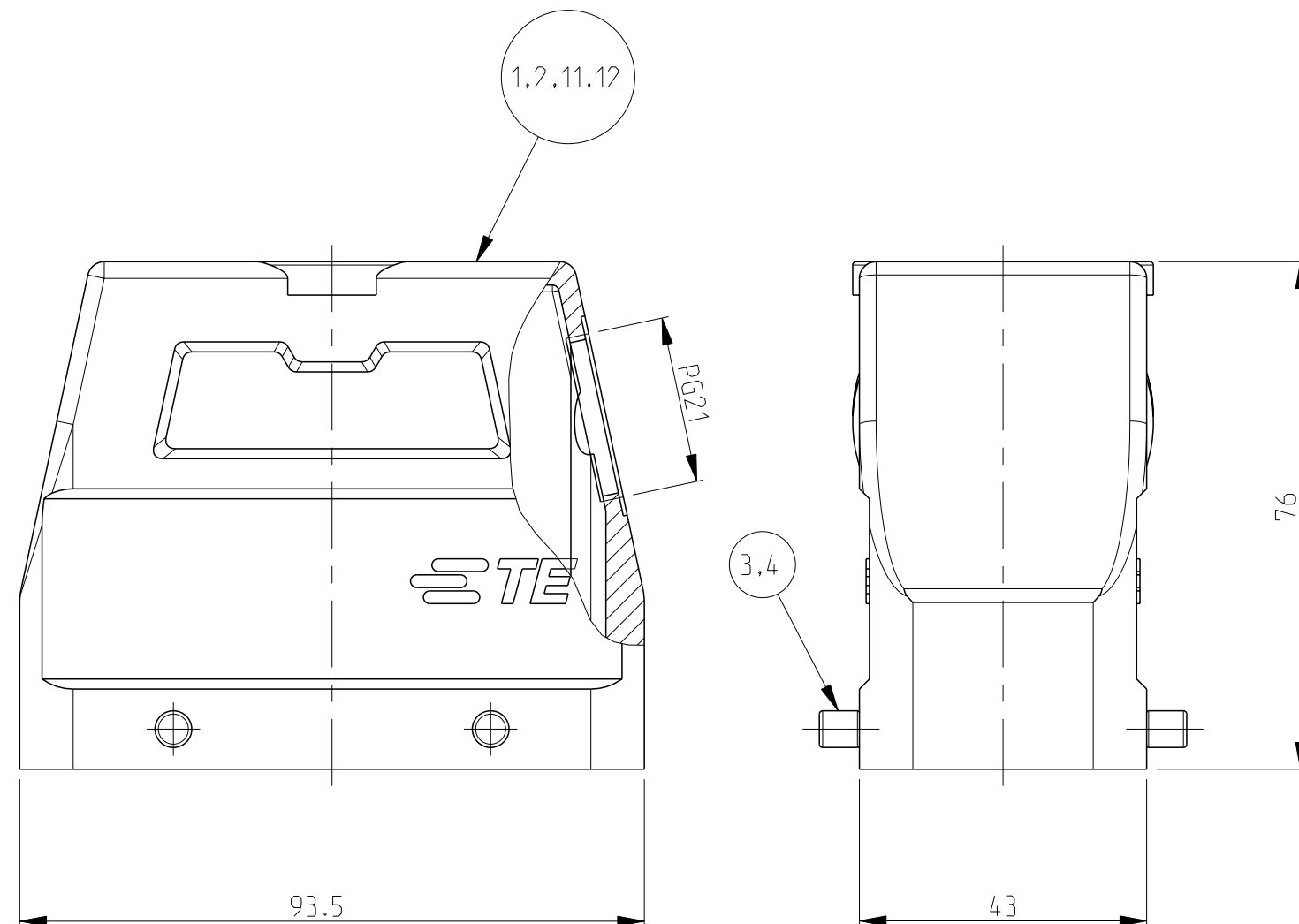


THIS DRAWING IS UNPUBLISHED.	RELEASED FOR PUBLICATION	1997
© COPYRIGHT 1997 BY -	ALL RIGHTS RESERVED.	

PN 1-3 & 2-3



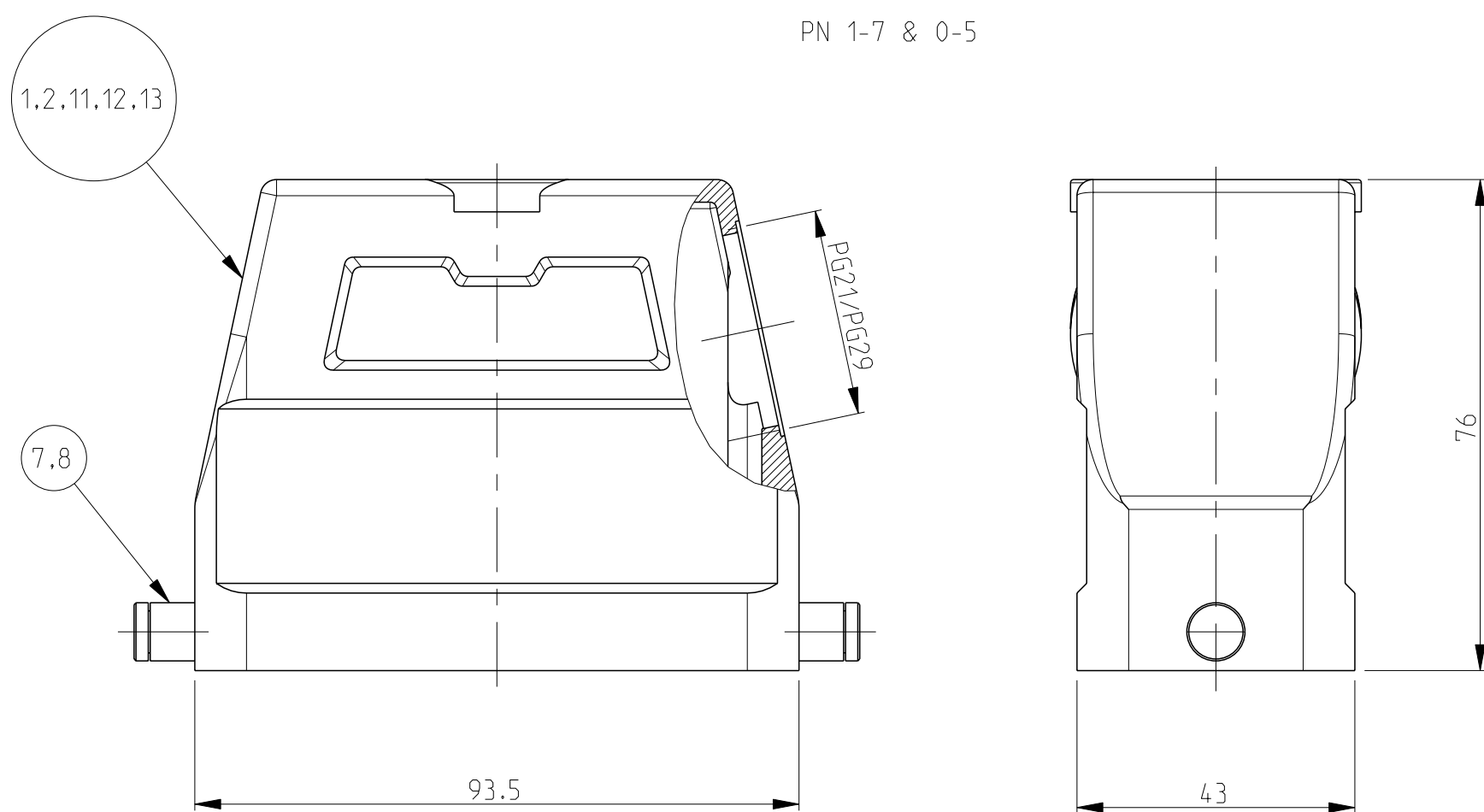
PN 0-4, 0-1, 2-6 & 1-6



NOTES

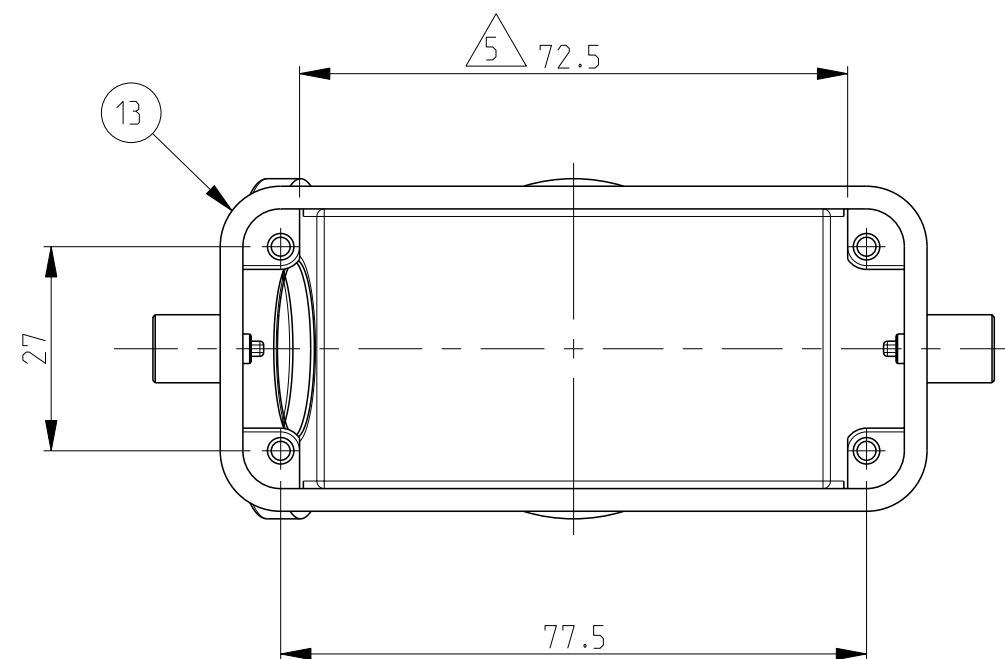
- 1 Material: Housing: aluminium diecasting alloy
- 2 Surface:- powder varnish-grey
Varnish black
- 3 Varnish on the inside not necessarily
- 4 Packaging
quantity 5 piece

PN 1-7 & 0-5

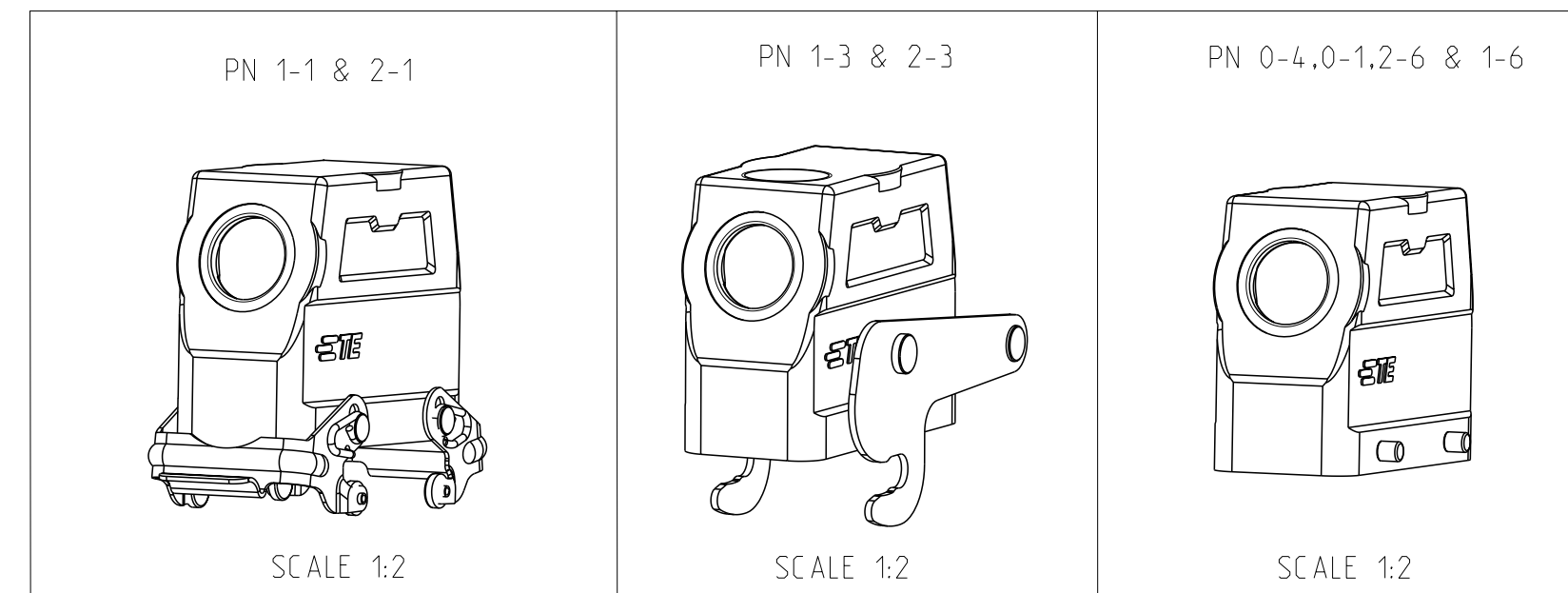
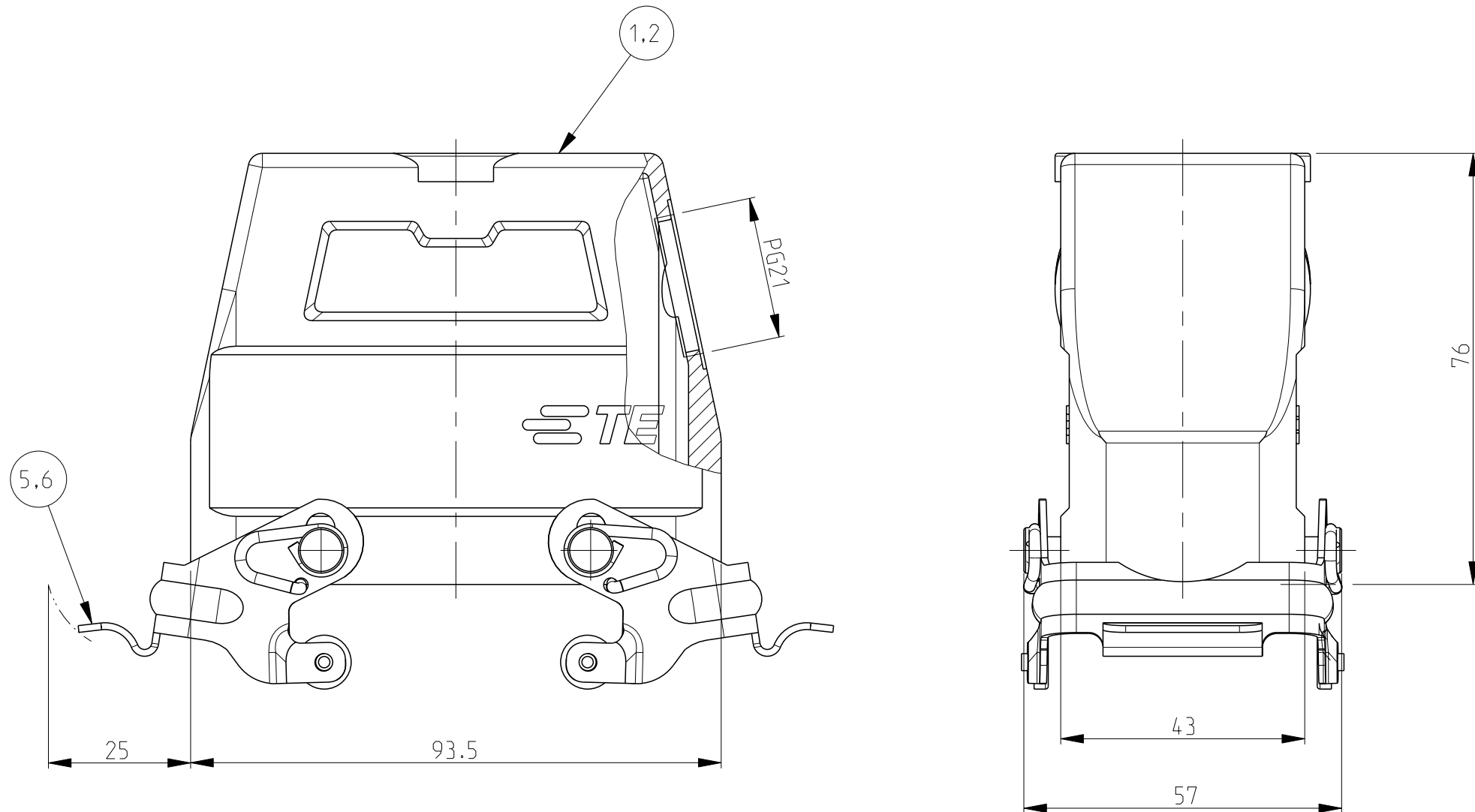




PN 0-3 & 0-6

5 Valid only for PN 0-3 & 0-6
Landing at measure 72.5 (20mm Deep) milled off : bothsides



PN 1-1 & 2-1

[illegible]

THIS DRAWING IS A CONTROLLED DOCUMENT.		DWN 19.12.1997 Schneider CWF 26.06.1998 Kramer		 TE Connectivity	
DIMENSIONS: mm		TOLERANCES UNLESS OTHERWISE SPECIFIED: mm		NAME HOOD HD.40.STS.1.21.G/1.29.G	
		0 PLC ± 1 PLC ± 2 PLC ± 3 PLC ± 4 PLC ± ANGLES ± FINISH		PRODUCT SPEC - APPLICATION SPEC -	
MATERIAL		WEIGHT		SIZE CASE CODE DRAWING NO A 100779 C=1102564	
CUSTOMER DRAWING		SCALE 1:1		SHEET 1 OF 1 REV. A11	

Mouser Electronics

Authorized Distributor

Click to View Pricing, Inventory, Delivery & Lifecycle Information:

[TE Connectivity:](#)

[2-1102564-7](#)