

4

3

2

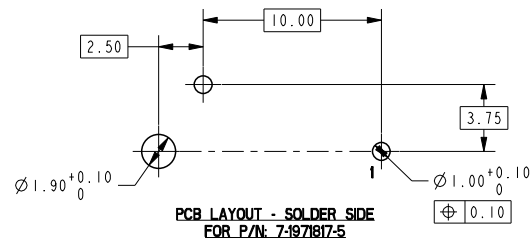
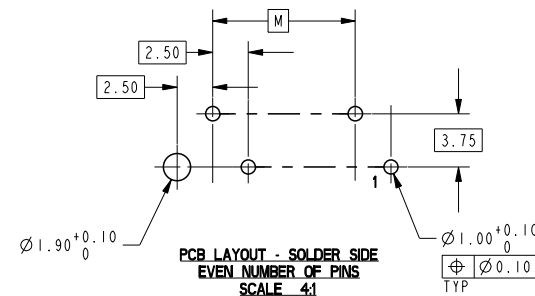
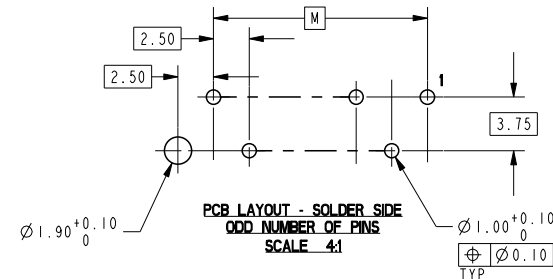
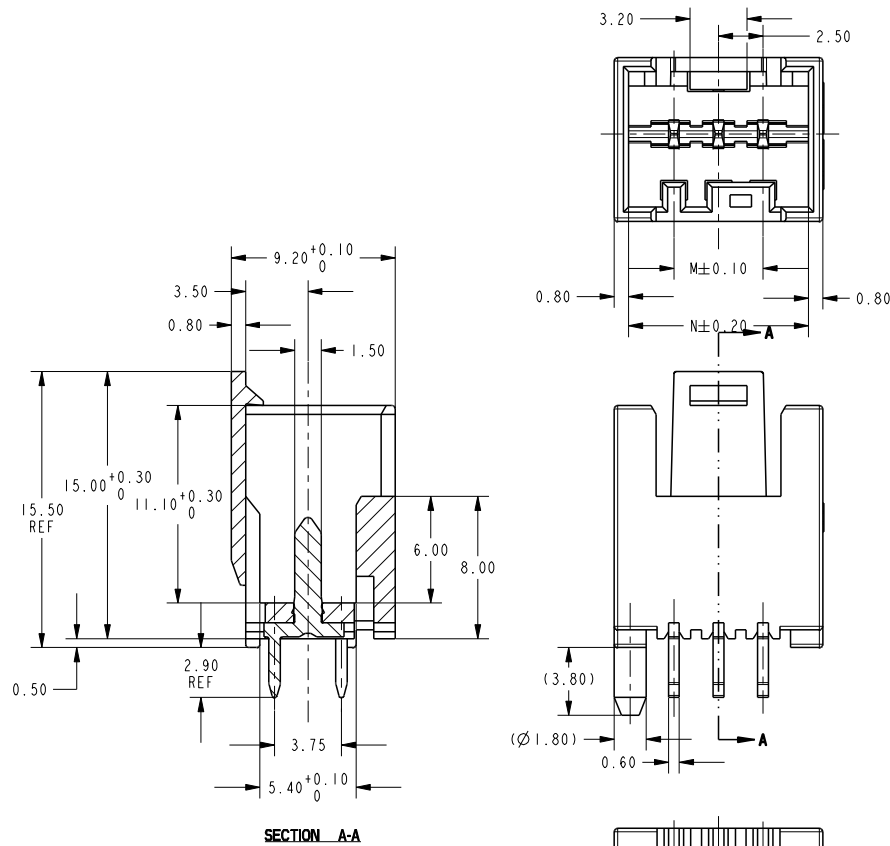
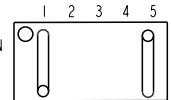
1

THIS DRAWING IS UNPUBLISHED.  
 RELEASED FOR PUBLICATION 20  
 BY - ALL RIGHTS RESERVED.

LOC	DIST	REVISIONS			
ES	00	P	LTR	DESCRIPTION	DATE DWN APVD
		A7		ECR-15-010757	20JUL2015 SL RR
		A8		ECR-17-010693	24JUL2017 WW RR

## NOTE

- SEE SHEET 4 FOR AVAILABLE CONFIGURATIONS
- MATERIAL: HOUSING, NYLON, UL94 V0, 750°C GWT NO FLAME  
EIGHT COLORS AVAILABLE, INCLUDING: NATURAL, RED, BLUE, YELLOW, BLACK, GREY, GREEN, PURPLE  
WHITE VERSION IS PRELIMINARY  
CONTACT, COPPER ALLOY, 0.60MM THICK
- FINISH: OPTION 1: TIN PLATING OVER NICKEL UNDERPLATING  
OPTION 2: AG PLATING OVER NICKEL UNDERPLATING
- PCB LAYOUT AS SHOWN
- THE PART NUMBERS SHOWING IN SHEET 2 & 3 & 4 ARE FOR NATURAL COLOR. THE PART NUMBER FOR OTHER COLOR ARE BASED ON THE NATURAL ONE: FOR THE SAME CONFIGURATION, THE PREFIX AND POSTFIX OF THE P/N ARE THE SAME. ONLY THE BASE NUMBER IS DIFFERENT ACCORDING TO DIFFERENT COLOR, DETAIL PLEASE SEE SHEET 5
- PACKAGING: LOOSE PIECE OR TUBE. THE PART NUMBERS IN THIS DRAWING ARE WITH LOOSE PIECE PACKAGING. PLEASE CONTACT TE SALES REPRESENTATIVES FOR TUBE PACKAGING REQUIREMENT.
- FOR PN 7-1971817-5 PIN LAYOUT AS FOLLOW
- PRELIMINARY PART NOT RELEASED FOR PRODUCTION



N	M	NO. OF POS.
40.10	35.00	15
37.60	32.50	14
35.10	30.00	13
32.60	27.50	12
30.10	25.00	11
27.60	22.50	10
25.10	20.00	9
22.60	17.50	8
20.10	15.00	7
17.60	12.50	6
15.10	10.00	5
12.60	7.50	4
10.10	5.00	3

THIS DRAWING IS A CONTROLLED DOCUMENT.		DWN: WINTER WANG 12NOV2012	TE Connectivity	
DIMENSIONS: (mm)		CHK: HAPYE WU 12NOV2012	NAME: RAST 2.5 TAB HEADER ASSY TH, VERTICAL, EXTERNAL LOCKING	
TOLERANCES UNLESS OTHERWISE SPECIFIED:		APVD: YIYHONG MAO 12NOV2012	SIZE: A2	
0 PLC ±		PRODUCT SPEC: 108-106079	CAGE CODE: 00779	
1 PLC ±		APPLICATION SPEC: -	DRAWING NO: 1971817	
2 PLC ±0.20		WEIGHT: -	RESTRICTED TO: -	
3 PLC ±		CUSTOMER DRAWING	SCALE: 5:1	
4 PLC ±			SHEET 1 OF 5	
ANGLES FINISH			REV A8	

4

3

2

1

THIS DRAWING IS UNPUBLISHED. RELEASED FOR PUBLICATION 20  
© COPYRIGHT 20 BY - ALL RIGHTS RESERVED.

LOC	DIST	REVISIONS				
ES	00	P	LYR	DESCRIPTION	DATE	DWN APVD

15	TAB CONTACT w/ SILVER PLATING	I	RAST 2.5 TAB HEADER HOUSING, EXTERNAL LOCKING, 15P (SEE THE DETAIL LAYOUT ON SHEET 4)	15	3-1971838-5 2-1971838-5 1-1971838-5	4	I	RAST 2.5 TAB HEADER HOUSING, EXTERNAL LOCKING, 4P (SEE THE DETAIL LAYOUT ON SHEET 4)	4	7-1971837-4 6-1971837-4 5-1971837-4 4-1971837-4 3-1971837-4 2-1971837-4 1-1971837-4				
9		I	RAST 2.5 TAB HEADER HOUSING, EXTERNAL LOCKING, 14P (SEE THE DETAIL LAYOUT ON SHEET 4)	14	2-1971838-4 1-1971838-4					3	I	RAST 2.5 TAB HEADER HOUSING, EXTERNAL LOCKING, 3P (SEE THE DETAIL LAYOUT ON SHEET 4)	3	1971837-3 9-1971837-3 8-1971837-3 7-1971837-3 6-1971837-3 5-1971837-3 4-1971837-3 3-1971837-3 2-1971837-3 1-1971837-3
14					1-1971838-4									1-1971838-2 1-1971838-2
13		I	RAST 2.5 TAB HEADER HOUSING, EXTERNAL LOCKING, 13P (SEE THE DETAIL LAYOUT ON SHEET 4)	13	1-1971838-3					3	I	RAST 2.5 TAB HEADER HOUSING, EXTERNAL LOCKING, 3P (SEE THE DETAIL LAYOUT ON SHEET 4)	3	1-1971838-1 1-1971838-1
8		I	RAST 2.5 TAB HEADER HOUSING, EXTERNAL LOCKING, 12P (SEE THE DETAIL LAYOUT ON SHEET 4)	12	2-1971838-2 1-1971838-2	2-1971838-1 1-1971838-1								
12					1-1971838-2	1-1971838-1 1-1971838-1								
11		I	RAST 2.5 TAB HEADER HOUSING, EXTERNAL LOCKING, 11P (SEE THE DETAIL LAYOUT ON SHEET 4)	11	2-1971838-1 1-1971838-1	QTY	TAB CONTACT	QTY	HOUSING	POS.	TE PART NO. 5			
QTY		TAB CONTACT	QTY	HOUSING	POS.	TE PART NO. 5	QTY	TAB CONTACT	QTY	HOUSING	POS.	TE PART NO. 5		

THIS DRAWING IS A CONTROLLED DOCUMENT.		DWN	WINTER WANG	12NOV2012	TE Connectivity		
		CHK	HAPYE WU	12NOV2012			
DIMENSIONS:		TOLERANCES UNLESS OTHERWISE SPECIFIED:		NAME		RAST 2.5 TAB HEADER ASSY TH, VERTICAL, EXTERNAL LOCKING	
mm		0 PLC ± 1 PLC ± 2 PLC ±0.20 3 PLC ± 4 PLC ±		PRODUCT SPEC		SIZE	
		ANGLES ±°		APPLICATION SPEC		CAGE CODE	
MATERIAL		FINISH		WEIGHT		DRAWING NO	
				CUSTOMER DRAWING		A200779 ©=1971817	
				SCALE		RESTRICTED TO	
				NTS		SHEET 2 OF 5 REV A8	

D

C

B

A

D

C

B

A

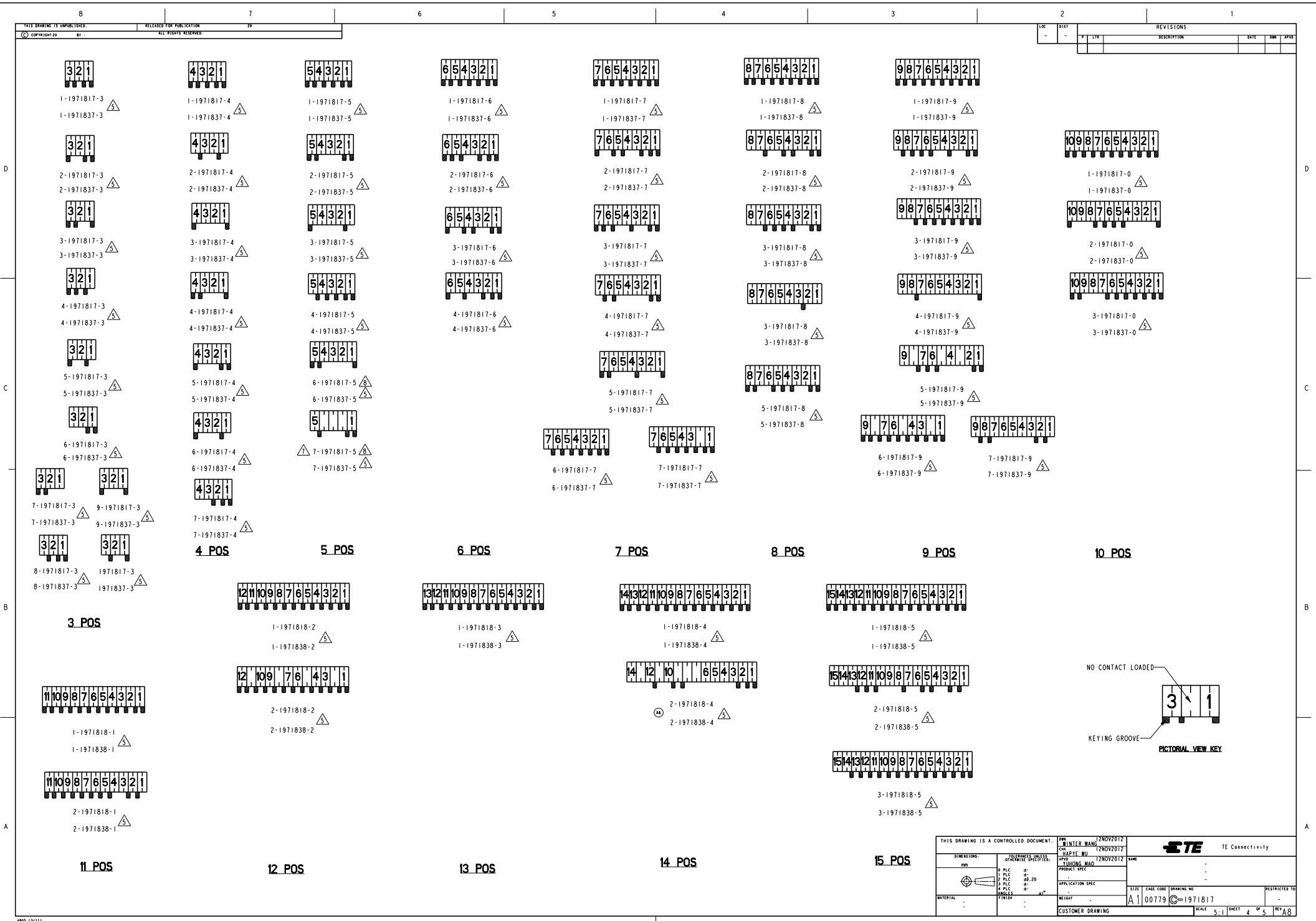
THIS DRAWING IS UNPUBLISHED.		RELEASED FOR PUBLICATION	20
BY -		ALL RIGHTS RESERVED.	

LOC	DIST	REVISIONS			
ES	00	P	LYR	DESCRIPTION	DATE DWN APVD

15	TAB CONTACT w/ TIN PLATING	I	RAST 2.5 TAB HEADER HOUSING, EXTERNAL LOCKING, 15P (SEE THE DETAIL LAYOUT ON SHEET 4)	15	3-1971818-5 2-1971818-5 1-1971818-5
9		I	RAST 2.5 TAB HEADER HOUSING, EXTERNAL LOCKING, 14P (SEE THE DETAIL LAYOUT ON SHEET 4)	14	2-1971818-4 1-1971818-4
14		I	RAST 2.5 TAB HEADER HOUSING, EXTERNAL LOCKING, 13P (SEE THE DETAIL LAYOUT ON SHEET 4)	13	1-1971818-3
13		I	RAST 2.5 TAB HEADER HOUSING, EXTERNAL LOCKING, 12P (SEE THE DETAIL LAYOUT ON SHEET 4)	12	2-1971818-2 1-1971818-2
8		I	RAST 2.5 TAB HEADER HOUSING, EXTERNAL LOCKING, 11P (SEE THE DETAIL LAYOUT ON SHEET 4)	11	2-1971818-1 1-1971818-1
12		I	RAST 2.5 TAB HEADER HOUSING, EXTERNAL LOCKING, 11P (SEE THE DETAIL LAYOUT ON SHEET 4)	11	2-1971818-1 1-1971818-1
QTY	TAB CONTACT	QTY	HOUSING	POS.	TE PART NO. 5

10	TAB CONTACT w/ TIN PLATING	I	RAST 2.5 TAB HEADER HOUSING, EXTERNAL LOCKING, 10P (SEE THE DETAIL LAYOUT ON SHEET 4)	10	3-1971817-0 2-1971817-0 1-1971817-0
9		I	RAST 2.5 TAB HEADER HOUSING, EXTERNAL LOCKING, 9P (SEE THE DETAIL LAYOUT ON SHEET 4)	9	7-1971817-9 6-1971817-9 5-1971817-9 4-1971817-9 3-1971817-9 2-1971817-9 1-1971817-9
6		I	RAST 2.5 TAB HEADER HOUSING, EXTERNAL LOCKING, 8P (SEE THE DETAIL LAYOUT ON SHEET 4)	8	5-1971817-8 4-1971817-8 3-1971817-8 2-1971817-8 1-1971817-8
9		I	RAST 2.5 TAB HEADER HOUSING, EXTERNAL LOCKING, 7P (SEE THE DETAIL LAYOUT ON SHEET 4)	7	7-1971817-7 6-1971817-7 5-1971817-7 4-1971817-7 3-1971817-7 2-1971817-7 1-1971817-7
8		I	RAST 2.5 TAB HEADER HOUSING, EXTERNAL LOCKING, 6P (SEE THE DETAIL LAYOUT ON SHEET 4)	6	4-1971817-6 3-1971817-6 2-1971817-6 1-1971817-6
6		I	RAST 2.5 TAB HEADER HOUSING, EXTERNAL LOCKING, 5P (SEE THE DETAIL LAYOUT ON SHEET 4)	5	7-1971817-5 6-1971817-5 4-1971817-5 3-1971817-5 2-1971817-5 1-1971817-5
7		I	RAST 2.5 TAB HEADER HOUSING, EXTERNAL LOCKING, 4P (SEE THE DETAIL LAYOUT ON SHEET 4)	4	7-1971817-4 6-1971817-4 5-1971817-4 4-1971817-4 3-1971817-4 2-1971817-4 1-1971817-4
6		I	RAST 2.5 TAB HEADER HOUSING, EXTERNAL LOCKING, 3P (SEE THE DETAIL LAYOUT ON SHEET 4)	3	1971817-3 9-1971817-3 8-1971817-3 7-1971817-3 6-1971817-3 5-1971817-3 4-1971817-3 3-1971817-3 2-1971817-3 1-1971817-3
2		I	RAST 2.5 TAB HEADER HOUSING, EXTERNAL LOCKING, 2P (SEE THE DETAIL LAYOUT ON SHEET 4)	2	1-1971817-2
5		I	RAST 2.5 TAB HEADER HOUSING, EXTERNAL LOCKING, 1P (SEE THE DETAIL LAYOUT ON SHEET 4)	1	1-1971817-1
4		I	RAST 2.5 TAB HEADER HOUSING, EXTERNAL LOCKING, 0P (SEE THE DETAIL LAYOUT ON SHEET 4)	0	1-1971817-0
3		I	RAST 2.5 TAB HEADER HOUSING, EXTERNAL LOCKING, 0P (SEE THE DETAIL LAYOUT ON SHEET 4)	0	1-1971817-0
2		I	RAST 2.5 TAB HEADER HOUSING, EXTERNAL LOCKING, 0P (SEE THE DETAIL LAYOUT ON SHEET 4)	0	1-1971817-0
1		I	RAST 2.5 TAB HEADER HOUSING, EXTERNAL LOCKING, 0P (SEE THE DETAIL LAYOUT ON SHEET 4)	0	1-1971817-0
0		I	RAST 2.5 TAB HEADER HOUSING, EXTERNAL LOCKING, 0P (SEE THE DETAIL LAYOUT ON SHEET 4)	0	1-1971817-0
QTY	TAB CONTACT	QTY	HOUSING	POS.	TE PART NO. 5

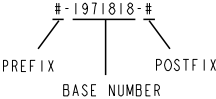
THIS DRAWING IS A CONTROLLED DOCUMENT.		DWN WINTER WANG 12NOV2012	TE Connectivity	
DIMENSIONS: mm		CHK HAPYE WU 12NOV2012	NAME RAST 2.5 TAB HEADER ASSY TH, VERTICAL, EXTERNAL LOCKING	
TOLERANCES UNLESS OTHERWISE SPECIFIED:		APVD YIYHONG MAO 12NOV2012	SIZE A2	
0 PLC ±0.20		PRODUCT SPEC	CAGE CODE 00779	
1 PLC ±0.20		APPLICATION SPEC	DRAWING NO 1971817	
2 PLC ±0.20		FINISH	RESTRICTED TO	
3 PLC ±0.20		WEIGHT	SCALE NTS	
4 PLC ±0.20		CUSTOMER DRAWING	SHEET 3	
5 PLC ±0.20			OF 5	
6 PLC ±0.20			REV A8	




REV	DATE	BY	APPD	REVISIONS	
				DESCRIPTION	

THIS DRAWING IS A CONTROLLED DOCUMENT.		DATE: 12NOV2012	DRAWN BY: WINTER WANG	
DRAWN BY: WINTER WANG		DATE: 12NOV2012	CHECKED BY: JIAPIE WU	
CHECKED BY: JIAPIE WU		DATE: 12NOV2012	APPROVED BY: YUJHONG MAO	
APPROVED BY: YUJHONG MAO		PRODUCT SPEC		
PRODUCT SPEC		APPLICATION SPEC		
APPLICATION SPEC		SIZE: 00779		
SIZE: 00779		DRAWING NO: 1971817		
DRAWING NO: 1971817		RESTRICTED TO: A8		
RESTRICTED TO: A8		CUSTOMER DRAWING		
CUSTOMER DRAWING		SCALE: 5:1		
SCALE: 5:1		SHEET: 4 OF 5		
SHEET: 4 OF 5		REV: A8		

FOR ANY KEYING CONFIGURATION, THERE ARE EIGHT COLORS AVAILABLE, BESIDES THE NATURAL COLOR, THERE ARE OTHER SEVEN COLORS, INCLUDE: YELLOW, BLUE, GREY, PURPLE, RED, GREEN, BLACK. THE WHITE VERSION IS PRELIMINARY. THE P/N OF THE COLOR CONNECTOR ARE BASED ON THE NATURAL CONNECTOR, THE PREFIX AND POSTFIX ARE THE SAME FOR THE SAME KEYING CONFIGURATION, BUT THE BASE NUMBERS ARE DIFFERENT ACCORDING TO DIFFERENT COLOR. THE FOLLOWING SHOWS WHAT'S THE P/N FOR COLOR CONNECTOR



COLOR	PART NUMBER OF THE CONNECTOR 				COMMENTS
	WITH TIN PLATING CONTACT		WITH AG PLATING CONTACT		
NATURAL	#-1971817-#	#-1971818-#	#-1971837-#	#-1971838-#	THE DETAIL P/N FOR DIFFERENT KEYING SEE SHEET 2 & 3 & 4
RED	#-1971938-#	#-1971939-#	#-2232141-#	#-2232142-#	THE PREFIX AND POSTFIX ARE THE SAME WITH THE P/N OF THE NATURAL CONNECTOR FOR THE SAME KEYING CONFIGURATION, JUST THE BASE NUMBERS ARE DIFFERENT BASED ON DIFFERENT COLOR. # CAN BE THE NUMBER FROM 0 TO 9.
BLUE	#-2232143-#	#-2232144-#	#-2232145-#	#-2232146-#	
YELLOW	#-2232147-#	#-2232148-#	#-2232149-#	#-2232150-#	
BALCK	#-1971994-#	#-1971995-#	#-2232151-#	#-2232152-#	
GREY	#-1971976-#	#-1971977-#	#-2232153-#	#-2232154-#	
GREEN	#-1971988-#	#-1971989-#	#-2232155-#	#-2232156-#	
PURPLE	#-2232157-#	#-2232158-#	#-2232159-#	#-2232160-#	
WHITE	#-2232277-#	#-2232278-#	#-2232279-#	#-2232280-#	

FOR EXAMPLE, IF A CONNECTOR WITH THE CONFIGURATION AS BELOW, AND WITH TIN PLATING CONTACT, IN THE SHEET 4, WE CAN FIND THE RELATED CONNECTOR P/N WITH NATURAL COLOR IS 5-1971817-4, THEN WE CAN LOOK IN THE ABOVE TABLE TO FIND THE CONNECTOR P/N WITH RED COLOR IS 5-1971938-4



# Mouser Electronics

Authorized Distributor

Click to View Pricing, Inventory, Delivery & Lifecycle Information:

[TE Connectivity:](#)

[6-1971817-9](#)