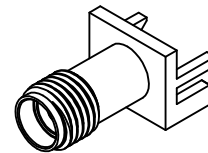


MATERIALS AND FINISHES

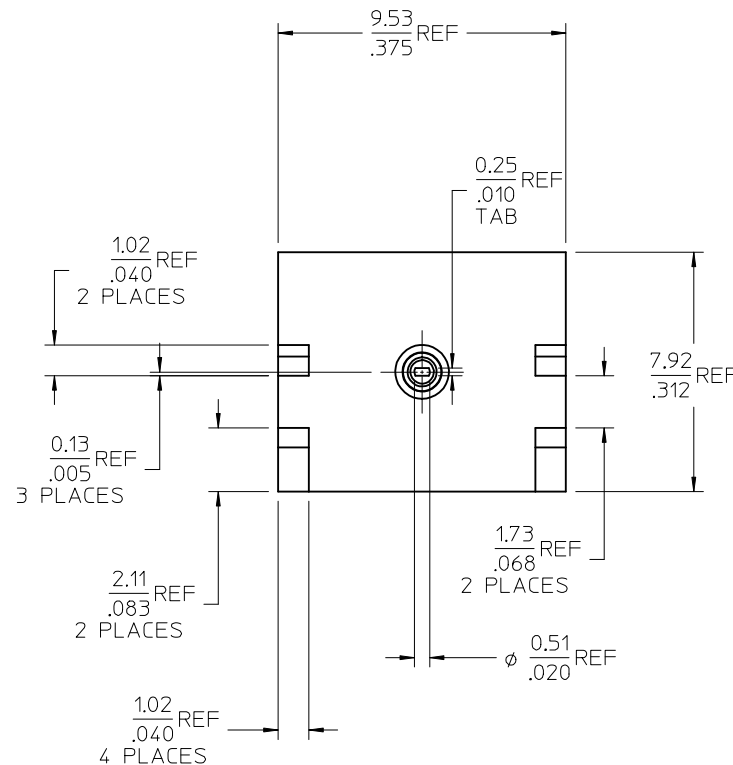
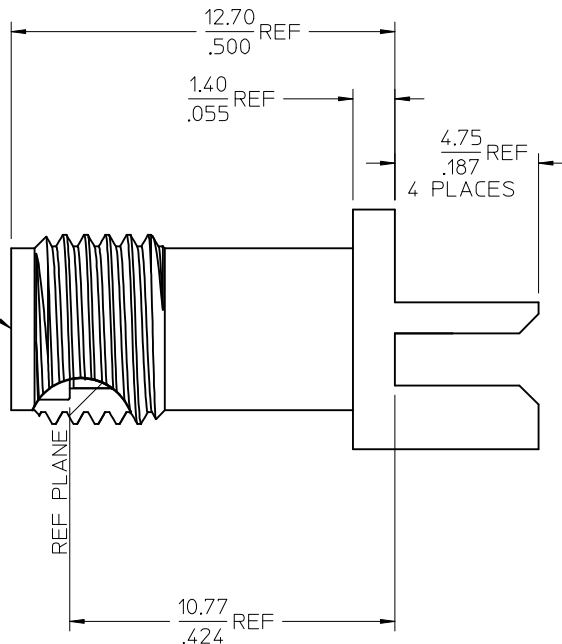
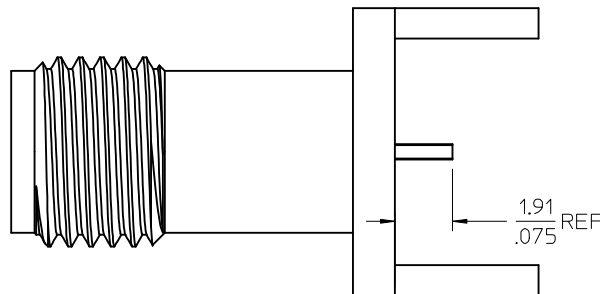
BODY BRASS  
PLATED GOLD

CENTER CONTACT BERYLLIUM COPPER  
PLATED GOLD

INSULATOR TEFLON





SMA JACK  
INTERFACE



PS-89675-2820	PRODUCT SPECIFICATION
MIL-STD-348A, FIG. 310.2	INTERFACE
SPECIFICATION	DESCRIPTION

73251-0621	73251-0620, ONE PER BAG
73251-0620	BULK
PART NO.	PACKAGING

CHG: REDRAWN TO SHOW REVISED COMPONENTS EC NO: URF2008-0025 DRWN: TLAHERTY 2007/07/13 CHKD: SSHAH 2007/07/13 APPR: JWIENER 2007/07/13 A2	DESCRIPTION	QUALITY SYMBOLS  ▽=0 ◻=0	GENERAL TOLERANCES (UNLESS SPECIFIED)		DIMENSION STYLE MM/IN		SCALE	DESIGN UNITS METRIC	 THIRD ANGLE PROJECTION		
				mm	INCH	DRAWN BY GMH	DATE 1998/10/13	TITLE SMA JACK, EDGE MOUNT 50 OHMS, EWR-3335 SMA-JR			
			4 PLACES	± ---	± ---	CHECKED BY	DATE				
			3 PLACES	± ---	± ---	APPROVED BY	DATE	 MOLEX INCORPORATED			
			2 PLACES	± ---	± ---						
			1 PLACE	± ---	± ---						
			ANGULAR ± 2 °								
			DRAFT WHERE APPLICABLE MUST REMAIN WITHIN DIMENSIONS		MATERIAL NO. SEE TABLE		DOCUMENT NO. SD-73251-062	SHEET NO. 1 OF 1			
			SIZE C	THIS DRAWING CONTAINS INFORMATION THAT IS PROPRIETARY TO MOLEX INCORPORATED AND SHOULD NOT BE USED WITHOUT WRITTEN PERMISSION							

# Mouser Electronics

Authorized Distributor

Click to View Pricing, Inventory, Delivery & Lifecycle Information:

Molex:

73251-0621