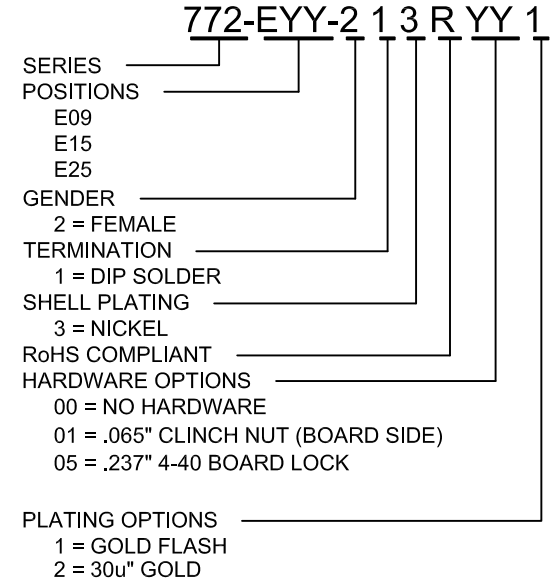
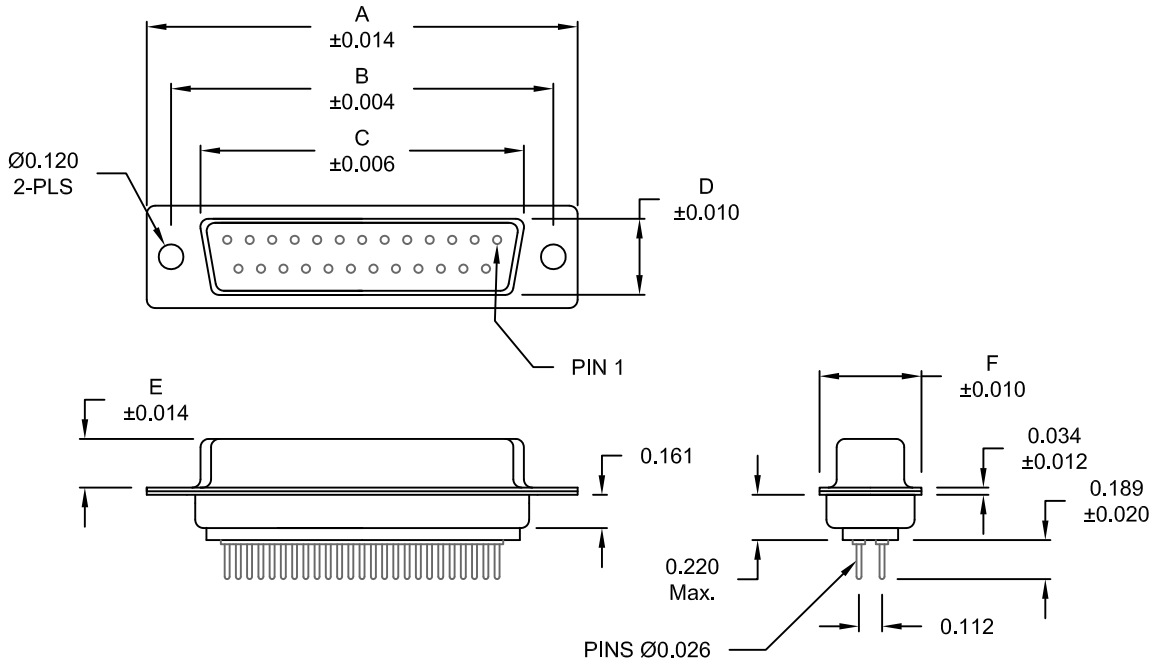


DESCRIPTION: FEMALE - DIP SOLDER / MACHINED - ECONOMY

No. OF PINS	DIMENSIONS					
	A	B	C	D	E	F
9	1.213	0.984	0.642	0.311	0.236	0.496
	30.80	24.99	16.30	7.90	5.99	12.60
15	1.541	1.312	0.970	0.311	0.236	0.496
	39.15	33.32	24.65	7.90	5.99	12.60
25	2.087	1.852	1.512	0.311	0.236	0.496
	53.00	47.04	38.40	7.90	5.99	12.60



**MATERIAL:**

- SHELL: STEEL, NICKEL PLATED
- INSULATOR: UL 94V-O RATED, WHITE, PA6T
- PROCESS TEMP.: 260° PROCESS TEMPERATURE
- CONTACT: BRASS
- SEALING MATERIAL: F04 FLEXIBLE ADHESIVE

MEETS IP67 STANDARDS  
(SEE PAGE 3 FOR SEALING DETAILS)

UNITS = inch [mm]

DO NOT SCALE FROM DRAWING

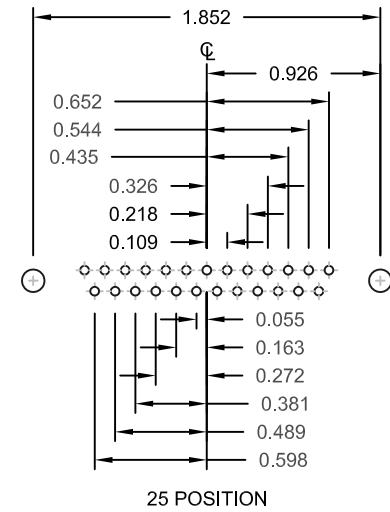
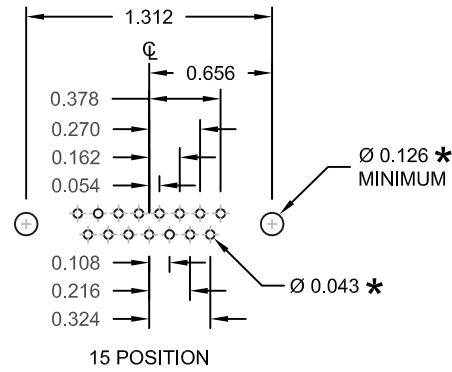
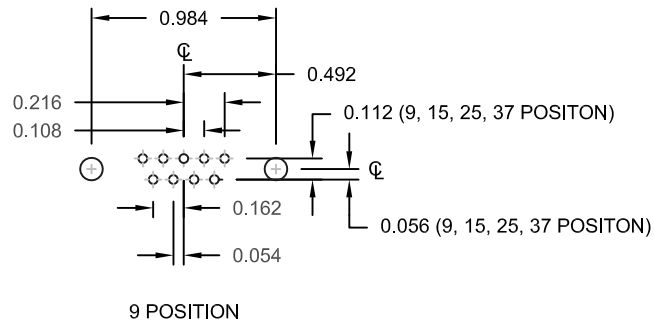
**ELECTRICAL:**

- CURRENT RATING: 5 AMPS
- CONTACT RESISTANCE: 15 mOhms Max.
- INSULATION RESISTANCE: 1,000 MOhms min.
- WORKING VOLTAGE: 250VAC
- TEMPERATURE: -55° C TO 125° C

RoHS COMPLIANT

	THESE DRAWINGS AND SPECIFICATIONS ARE THE PROPERTY OF NorComp AND SHALL NOT BE REPRODUCED, COPIED OR USED AS THE BASIS FOR THE MANUFACTURE OR SALE OF APPARATUS WITHOUT WRITTEN PERMISSION.	DRAWN: PAM JENKINS	DATE: 9-4-08
		SCALE: NTS	SHEET 1 OF 3
<h1>NorComp</h1>		DWG NO. 772-EYY-213RYY1	


DESCRIPTION: PCB LAYOUT - STANDARD "D"



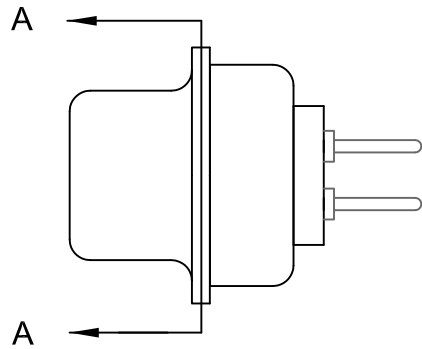
UNITS = inch

\* TYP.  
SUGGESTED SIZE  
MAY NOT BE SUITABLE FOR ALL APPLICATIONS

DO NOT SCALE FROM DRAWING

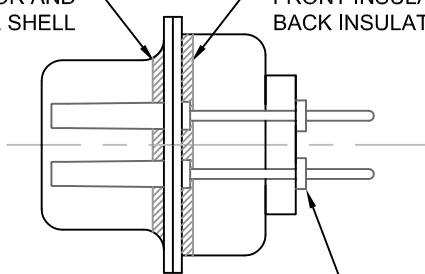
	THESE DRAWINGS AND SPECIFICATIONS ARE THE PROPERTY OF NorComp AND SHALL NOT BE REPRODUCED, COPIED OR USED AS THE BASIS FOR THE MANUFACTURE OR SALE OF APPARATUS WITHOUT WRITTEN PERMISSION.		DRAWN: PAM JENKINS	DATE: 9-4-08
	<h1>NorComp</h1>		SCALE: NTS	SHEET 2 OF 3
DWG NO. 772-EYY-213RYY1				

DESCRIPTION: IP67 - FEMALE - DIP SOLDER - MACHINED - ECONOMY - SEALING PROCESS



FRONT SEAL APPLIED BETWEEN  
FRONT INSULATOR AND  
FRONT METAL SHELL

MIDDLE SEAL APPLIED BETWEEN  
FRONT INSULATOR AND  
BACK INSULATOR

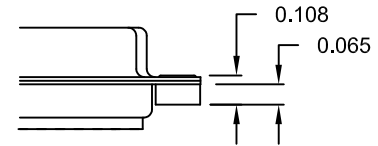


**\*\*NOTE\*\***  
SEALING MATERIAL  
SHALL NOT PROTRUDE  
PAST THE CONTACT  
SHOULDER

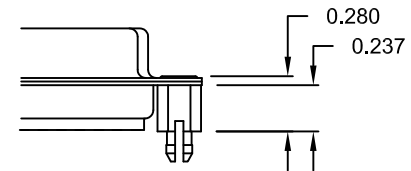
DETAIL A-A

HARDWARE OPTIONS

01X ..... 0.065" (BOARD SIDE)



05X ..... 0.237" (BOARD SIDE)



UNITS = inch [mm]

**DO NOT SCALE FROM DRAWING**



THESE DRAWINGS AND SPECIFICATIONS ARE THE PROPERTY OF NorComp AND SHALL NOT BE REPRODUCED, COPIED OR USED AS THE BASIS FOR THE MANUFACTURE OR SALE OF APPARATUS WITHOUT WRITTEN PERMISSION.

DRAWN: PAM JENKINS		DATE: 9-4-08	
SCALE: NTS	SHEET 3	OF 3	REV 8
DWG NO. 772-EYY-213RYY1			

**NorComp**