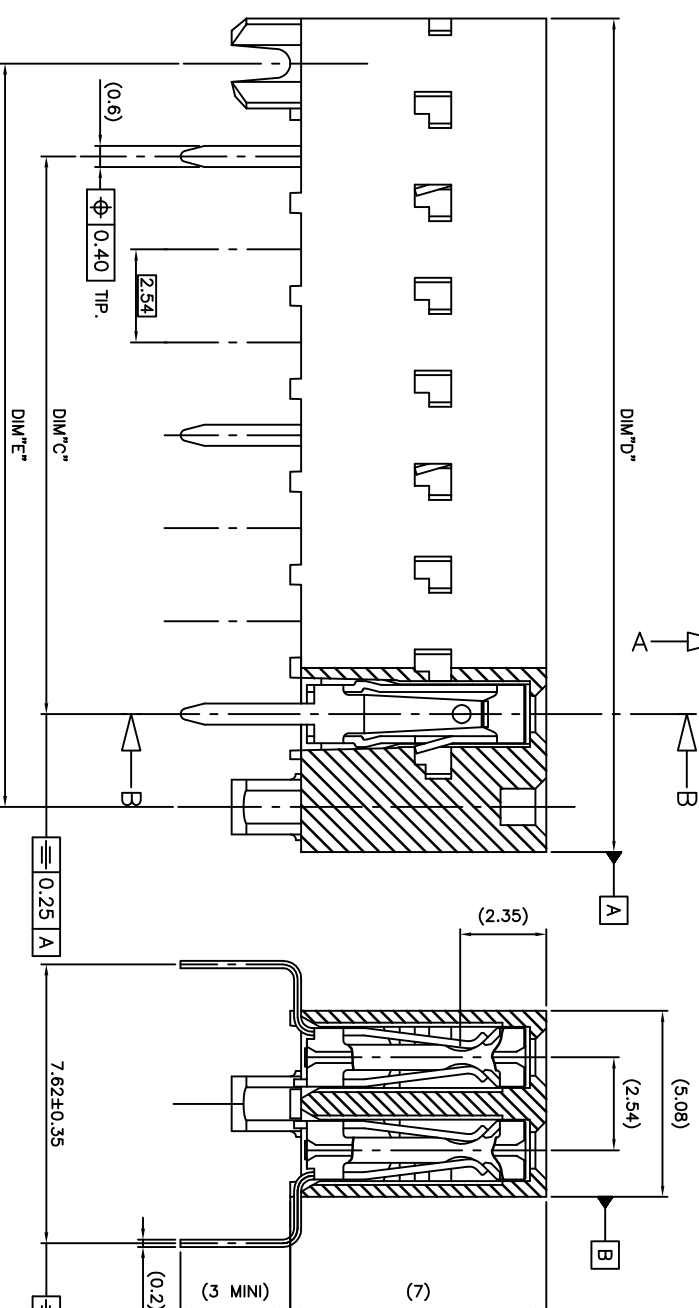
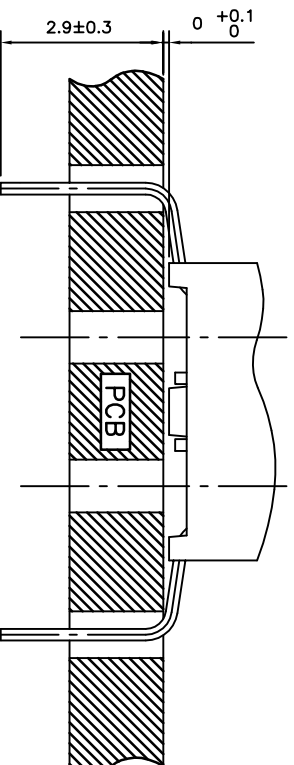
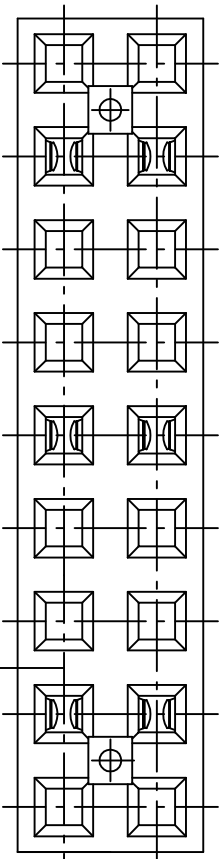


PRODUCT N°	DIM"C"	DIM"D"	DIM"E"	X = Contact in Cavity (positions with locating pegs excluded)																			
				X	X	X	X	X	X	X	X	X	X	X	X	X	X	X	X	X	X	X	X
73375-301LF	15.24	22.78	20.32	X			X				X												
73375-302LF	48.26	55.80	53.34	X			X																
				X			X																

ROHS COMPATIBLE, SEE NOTE 4



#### NOTES:

- 1 - MATERIAL HOUSING: PCT 30% GLASS FILLED COLOUR GREY, HIGH TEMPERATURE FLAME RETARDANT PER UL-94 CATEGORY VO. COMPATIBLE WITH INFRARED SOLDERING.
- 2 - MATERIAL TERMINAL: PHOSPHOR BRONZE EXTRA HARD.
- 3 - RECOMMENDED APPLICATION DATA:
  - A - RECOMMENDED HOLE PATTERN SHOWN IN SHEET 2.
  - B - ALL MATING PINS TO BE 0.64 mm SQUARE ON TRUE CENTER OF GIVEN TERMINAL SPACING WITHIN 0.38 mm DIAM.
  - C - SUGGESTED MATING PIN LENGTH: BOTTOM ENTRY 7.3 mm TOP ENTRY 3.3 mm
  - D - RECOMMENDED PC BOARD THICKNESS 1.6 mm.
- 4 - ROHS COMPATIBLE PRODUCT SPECIFICATIONS
  - a - PLATING:
    - "LF" MEANS THE PRODUCT IS LEAD-FREE, 2µm MINIMUM MATTE TIN OVER 1.27µm MINIMUM NICKEL UNDERPLATE.
  - b - MANUFACTURING PROCESS COMPATIBILITY
    - THE HOUSING WILL WITHSTAND EXPOSURE TO 260°C ±5°C SOLDER BATH TEMPERATURE FOR 5 SECONDS IN A WAVE SOLDER APPLICATION WITH A 1.6mm MIN THICK CIRCUIT BOARD.
  - c - LABELING:
    - MEETS PACKAGING SPECS AS PER GS-14-920
  - d - LEGAL STATEMENT: SEE GS-47-0004

73375-7XXLF	2 µm GOLD	3.81µm Sn
73375-4XXLF	5µm Sn	3.81µm Sn
73375-3XXLF	0.75 µm GOLD	3.81µm Sn
PLATING CODE	CONTACT AREA	SOLDER TAIL
PLATING EXPLANATION		

SECTION A-A

SECTION B-B

mat'l. code	surface	tolerance	projection	product family
SEE NOTES	ISO 1302	ISO 46 ISO 110	ISO 110	DX VOC DR
lit'g. no. dfr	date	reference unless otherwise specified	angles	title
H B-191231 LMI	14.10.21	4x	mm	DUAL ENTRY
C F04-0118 DE	04.01.26	4x	mm	EXT.LOC/SELECT.LOADED
D F04-0347 DE	04.11.09 dfr	G.SANCHEZ	98.12.14	sheet 1 of 2 size
E F06-0137 DE	06.02.27 dfr	P.NIZZI	98.12.14	A2
F F06-0204 DE	06.06.20 dfr	DLEBRAND	98.12.14	CUSTOMER
G F06-0323 DE	06.11.21 dfr	NIZZI	98.12.14	Drawing
sheet	revision	H	B	
index	sheet	1	2	

A

A

DIM"E"±0.03

B

B

FCIconnect.com



C

C

 $\phi 2.55 \pm 0.05$ 
 $\phi 1.4 \text{ MIN}$ 
 $\phi 0.10$ 
 $\phi 0.76 \text{ MIN}$ 
 $\phi 0.10$ 

Copyright FCI

mat'l. code SEE NOTES				surface ISO 1302 ✓	tolerance ISO 406 ISO 1101	projection 	product family DX VCC DR			
ltr	ecn no	dr	date	tolerances unless otherwise specified		mm 	title DUAL ENTRY EXT.LOC/SELECT.LOADED			
A	F04-0347	DLE	04.11.09	angles	linear					
B	F06-0204	DLE	06.06.20	±2'		scale 10:1	dwg no 73375 sheet 2 of - size A4			
				dr	D LEGRAND	04.11.09				
				enr	P.NIZZI	04.11.09	type CUSTOMER Drawing			
				chr	D.LEGRAND	04.11.09				
				appd	P NIZZI	04.11.09				
sheet index	revision sheet									

# Mouser Electronics

Authorized Distributor

Click to View Pricing, Inventory, Delivery & Lifecycle Information:

[FCI / Amphenol:](#)

[73375-301LF](#)