



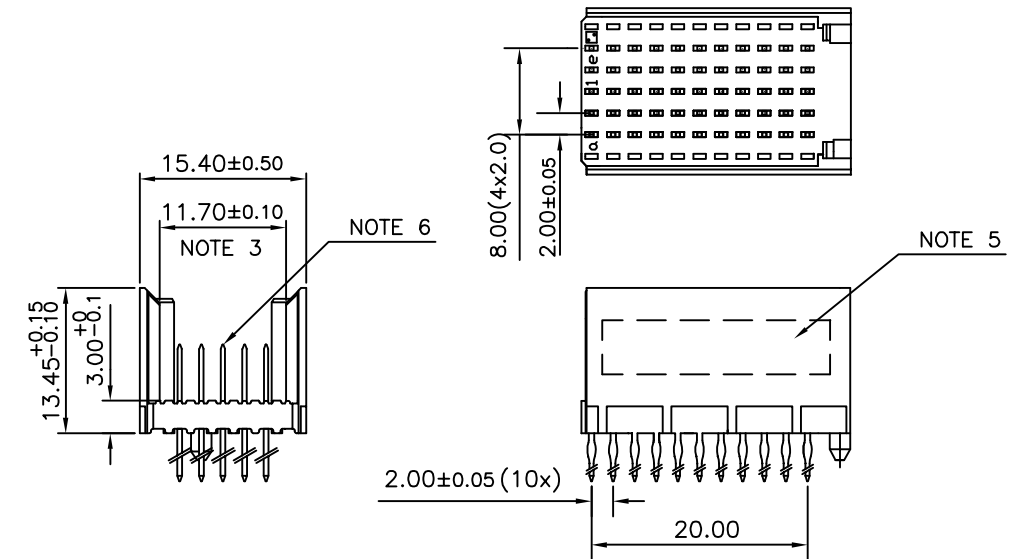
FCIconnect.com

Copyright FCI

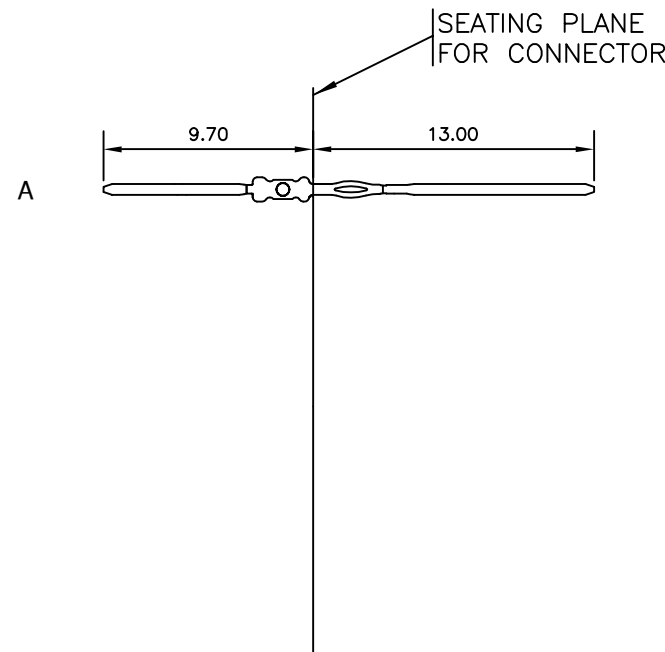
### LOADING PATTERN MATING SIDE

f	0	0	0	0	0	0	0	0	0	0
e	A	A	A	A	A	A	A	A	A	A
d	A	A	A	A	A	A	A	A	A	A
c	A	A	A	A	A	A	A	A	A	A
b	A	A	A	A	A	A	A	A	A	A
a	A	A	A	A	A	A	A	A	A	A
z	0	0	0	0	0	0	0	0	0	0
POS	01				05				10	

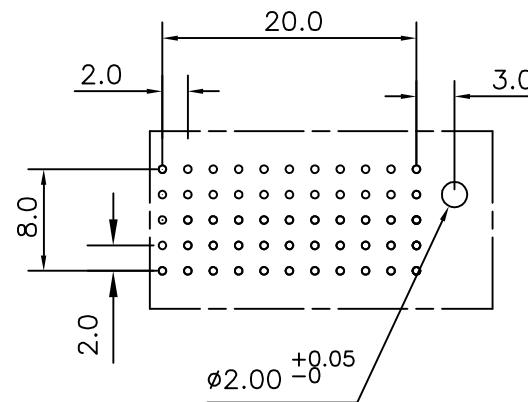
### LOADED CONNECTOR ASSEMBLY (FOR EXAMPLE)



### CONTACT OVERVIEW



### LAY-OUT P.C.B.-HOLE

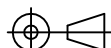
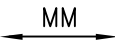



HM2P09PKE120-  
LEAD FREE INDICATOR : LF = LEAD FREE  
(DIGIT 15 & 16)

PLATING CODE (DIGIT 13 AND 14)  
(REF DRW NO. BS,C , 201844 , 003)

### NOTES

- THIS PRODUCT IS CSA APPROVED.
  - THIS PRODUCT IS UL RECOGNIZED.
  - MEASURED AT THE BOTTOM.
  - MATERIAL CONTACT: PHOSPHORBRONZE  
HOUSING: CREAM WHITE GLASS FILLED POLYESTER UL-94V0
  - CONNECTOR PRINTED WITH P/N AND DATE CODE.
  - FOR ACTUAL CONTACT LOADINGS, SEE LOADING PATTERN MATING SIDE.
  - SHAPE OF CONNECTOR HOUSING CAN ALTER DEPENDING ON PRODUCTION LOCATION
  - THE PRODUCT (LF) MEETS EUROPEAN UNION DIRECTIVES AND OTHER COUNTRY REGULATIONS AS DESCRIBED IN GS-22-008
  - FOR RECOMMENDED PTH DIMENSIONS REFER DRAWING : BS, A , 201572 , 001
- CATALOG NO: HM2P09PKE120----

mat'l. code SEE NOTE 4				surface ISO 1302 ✓		tolerance ISO 406 ISO 1101		projection 		product family MILLIPACS							
ltr	ecn no	dr	date	tolerances unless otherwise specified								title MPACS 5+2R STR HDR PF CONN TYPE C					
A	I04-0003	MINI	2004/01/27	angles linear		.0±0.2		scale —									
B	I05-0187	MINI	2005/10/08			.00±0.1											
C	I06-0090	MINI	2006/06/26	0°±1°													
				dr	MINI K VANDANATH		2004/01/27				dwg no		sheet 1 of 1		size		
				engr	BIJU K PAUL		2004/01/27				BS, C ,203028, 107		A3				
				chr	BIJU K PAUL		2006/06/26										
				appd	BIJU K PAUL		2006/06/26										
sheet index		revision	C														
sheet		sheet	1														

# Mouser Electronics

Authorized Distributor

Click to View Pricing, Inventory, Delivery & Lifecycle Information:

[FCI / Amphenol:](#)

[HM2P09PKE120GFLF](#) [HM2P09PKE120GEL1](#) [HM2P09PKE120GEL1LF](#) [HM2P09PKE120GF](#)