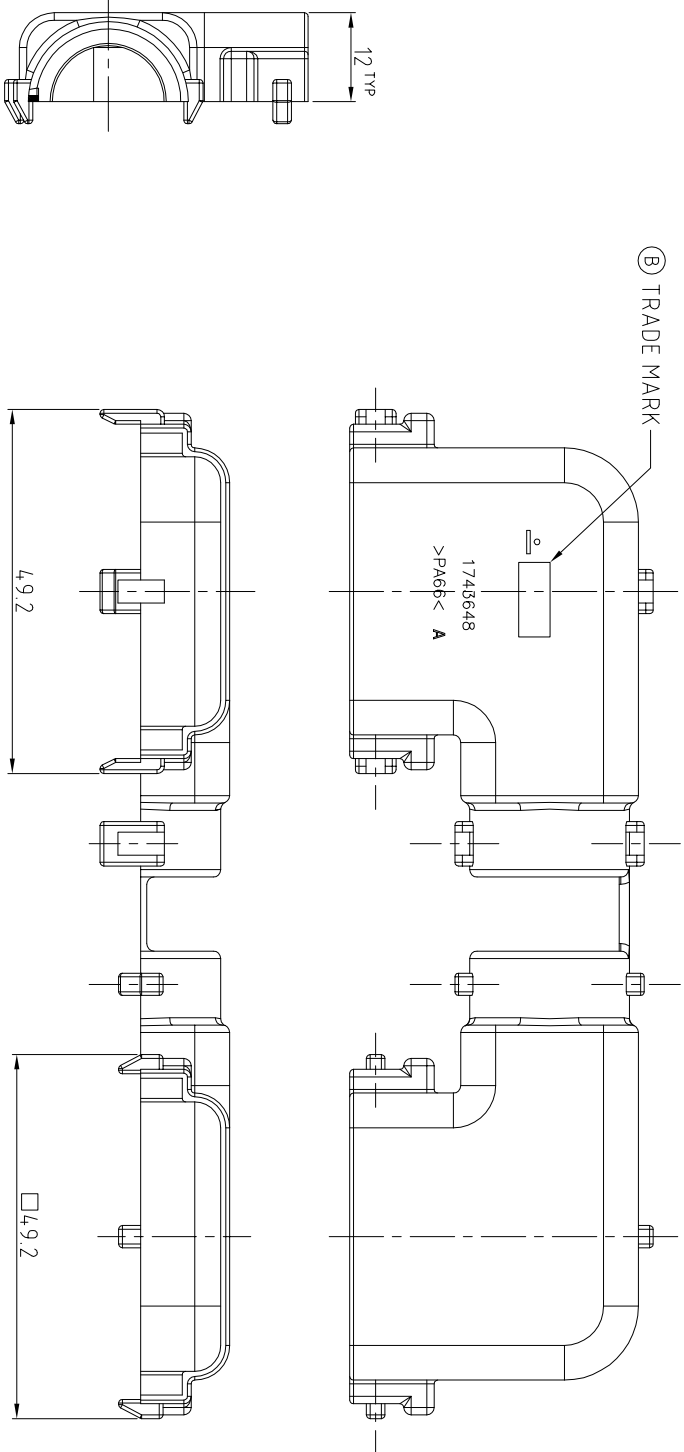
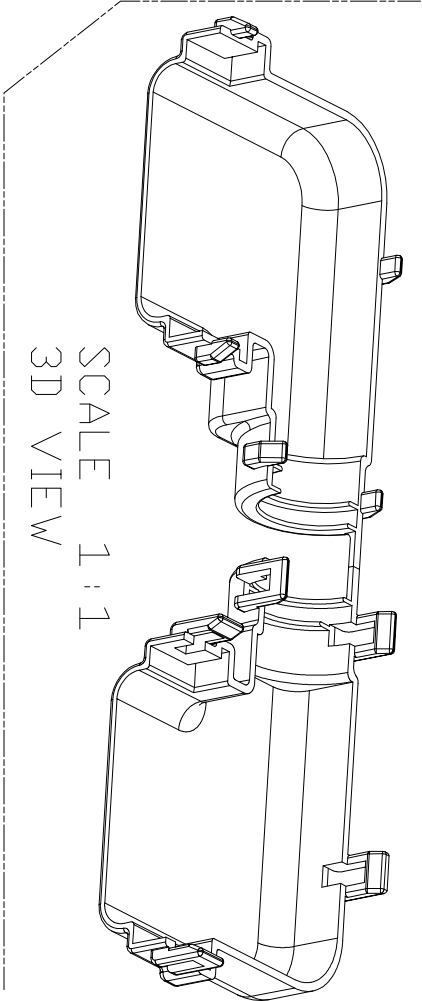
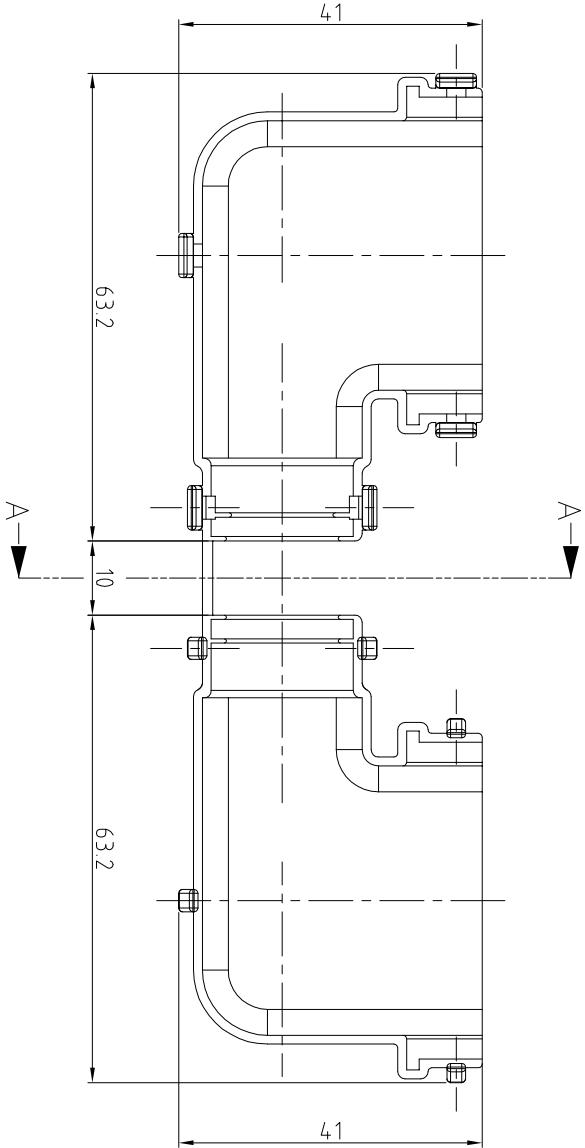


| LOC | | DIST | | REVISIONS | | | | |
|-----|--|------|-----|-------------------------|--|------------|-----|------|
| DS | | P | LTR | DESCRIPTION | | DATE | DWN | APVD |
| | | | A | RELEASED | | 11/ JAN/06 | IS | JK |
| | | | B | REVISED (ECR-11-001500) | | 12/ JAN/10 | JY | HG |



A-A



NOTES:

1. WARP IS 0.5 MAX. AND FLASH IS 0.3 MAX.
2. APPLICABLE CONNECTOR : X-1743062-X
3. APPLICABLE CORRUGATOR DIAMETER : ϕ 14.0
4. APPLICATION TEST SPEC. : MS210-06C (EXCEPT 4.4)

| | | | | | | | |
|---|--|--|--|--|--|--|--|
| control priority dimension: | | | | <div><div></div> CRITICAL, <div><input checked="" type="checkbox"/> MAJOR, <div><input type="checkbox"/> MINOR</div></div></div> | | | |
| THIS DRAWING IS A CONTROLLED DOCUMENT FOR TYCO ELECTRONICS CORPORATION IT IS SUBJECT SHOULD BE CONTACTED FOR THE LATEST REVISION | | | | DWN : JY PARK | | | |
| DIMENSIONS: mm | | | | CHK : KT LIM | NAME | | |
| TOLERANCES UNLESS OTHERWISE SPECIFIED: DECIMALS : ± 0.3 ANGLES : $\pm 3^\circ$ | | | | APVD : HG CHD | COVER HSG FOR MTH/JPT SLD 36P CAP ASS'Y (TYPE "B") | | |
| 3rd ANGLE PROJECTION | | | | PRODUCT SPEC | SIZE | | |
| MATERIAL | | | | APPLICATION SPEC | CAGE CODE | | |
| SEE TABLE | | | | WEIGHT | DRAWING NO | | |
| | | | | CUSTOMER DRAWING | RESTRICTED TO | | |

STE TE Connectivity

Mouser Electronics

Authorized Distributor

Click to View Pricing, Inventory, Delivery & Lifecycle Information:

[TE Connectivity:](#)

[1743648-2](#)