
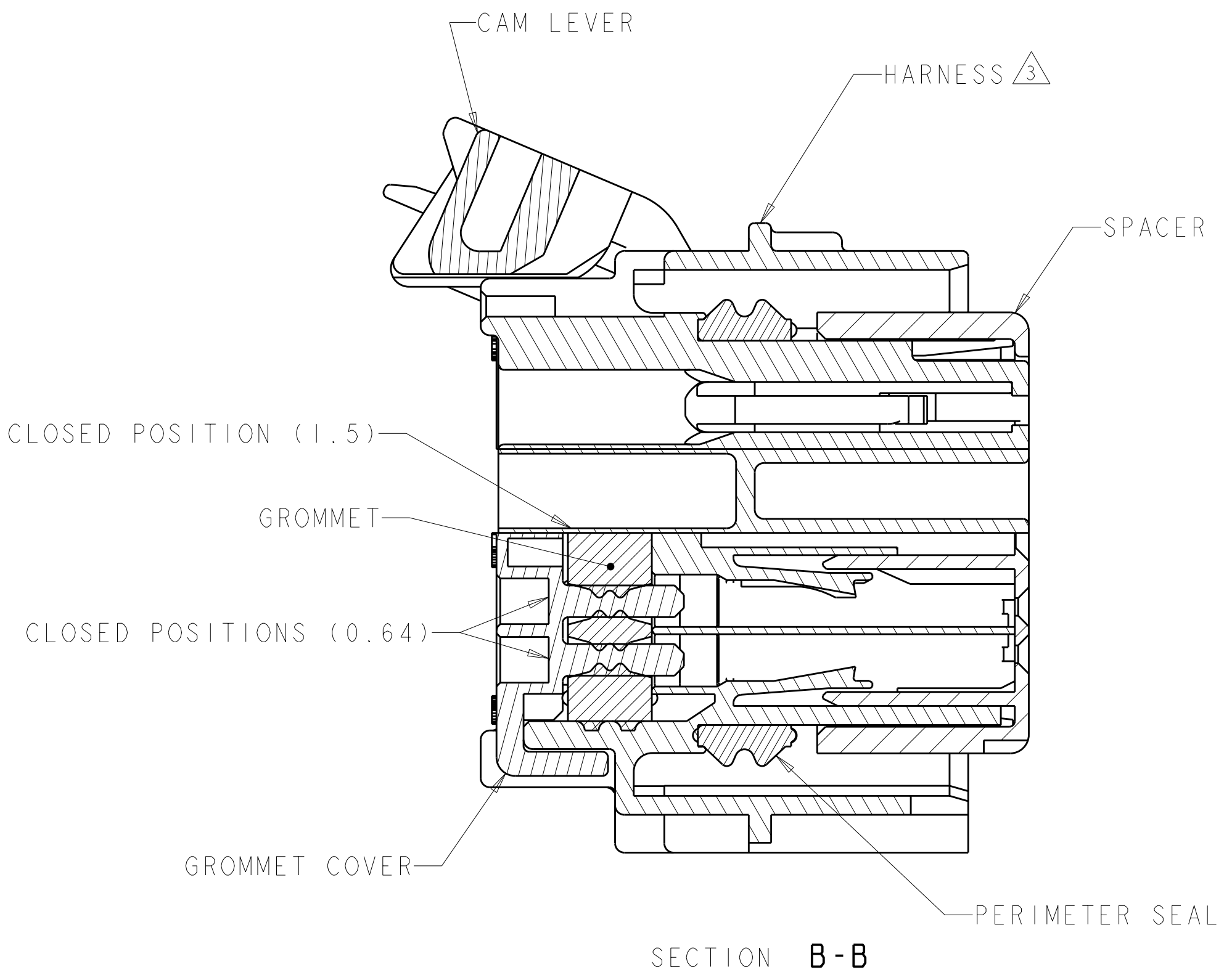
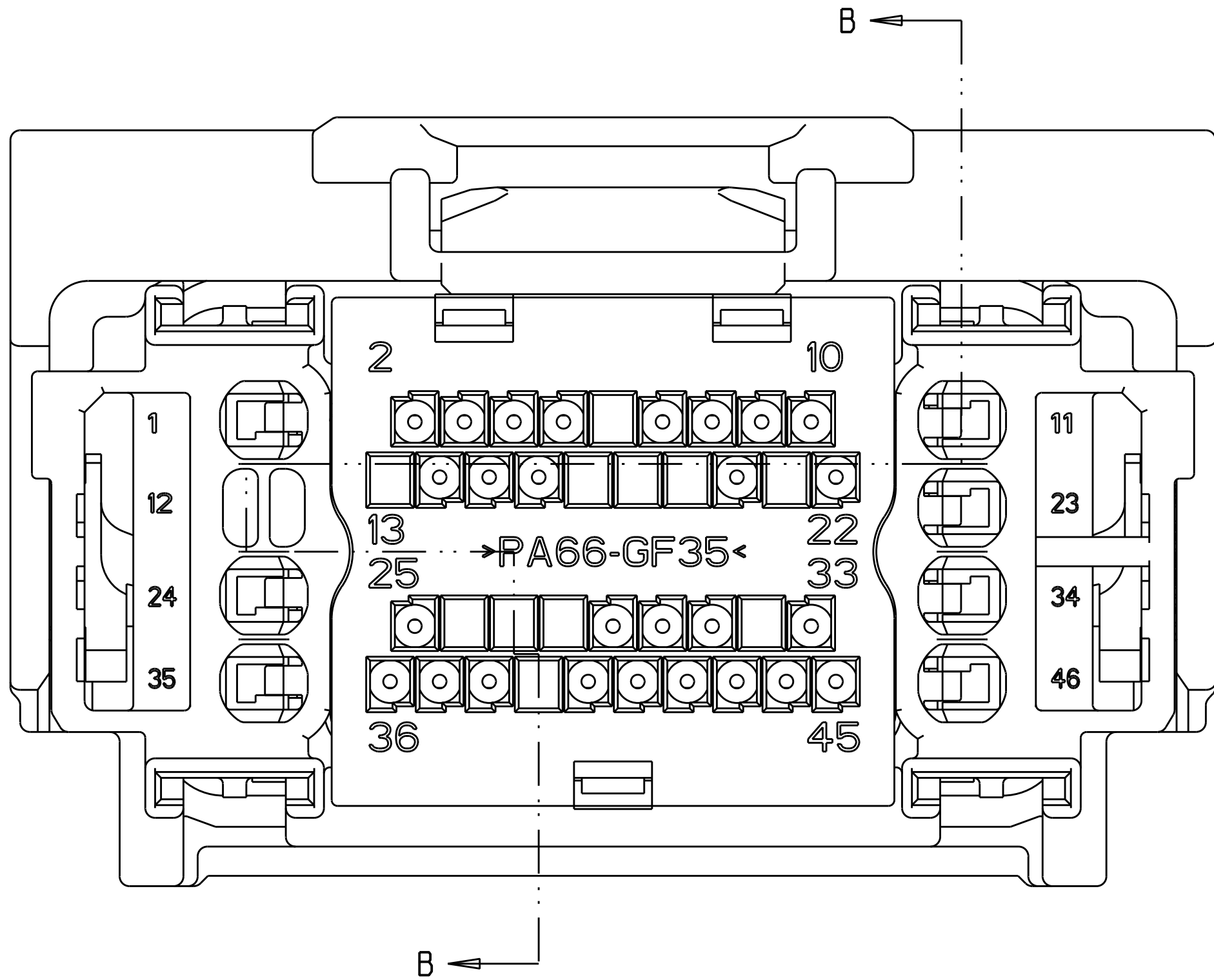
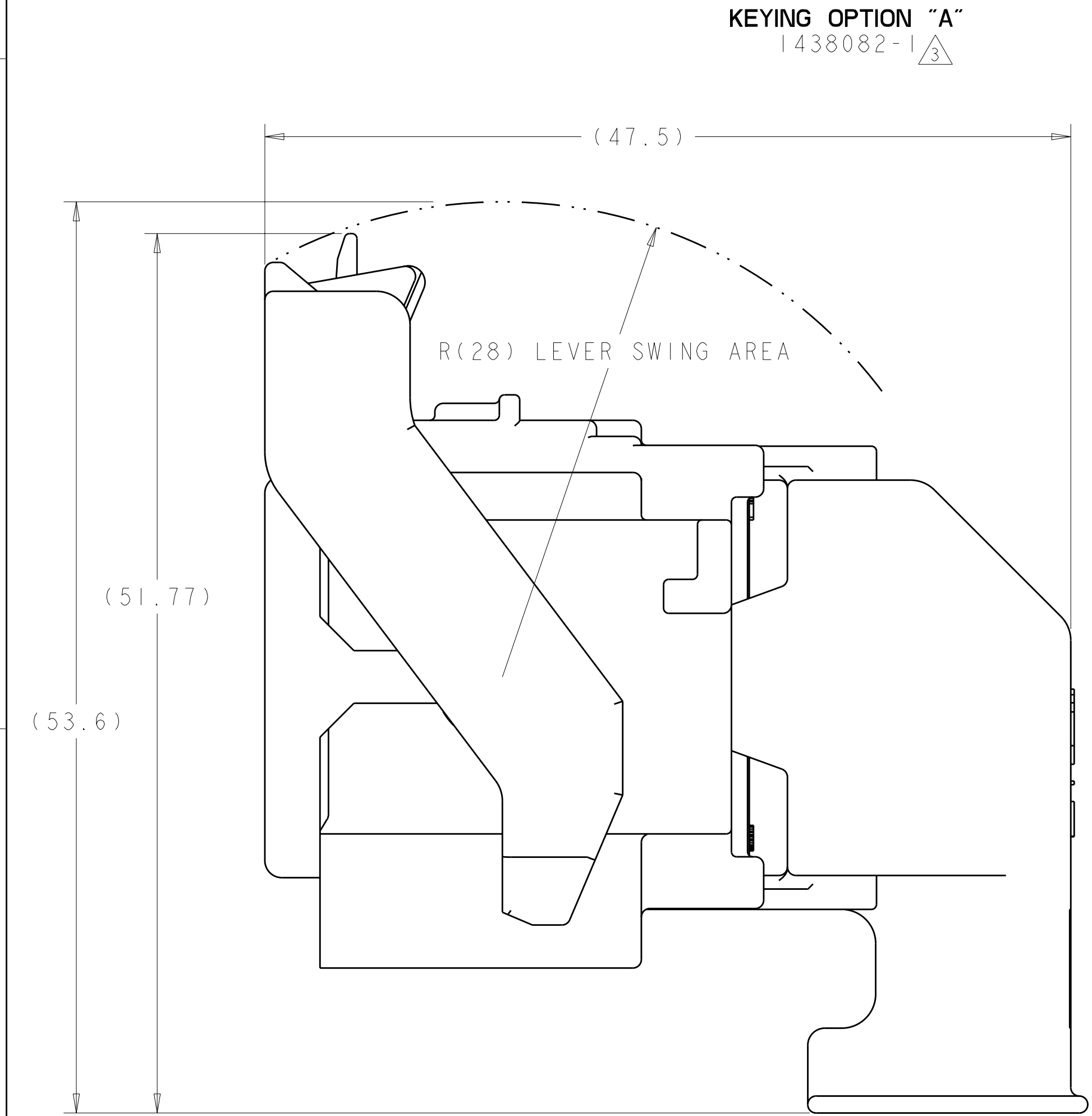


SCALE 1:1

KEYING OPTION "B"
1438082-2 




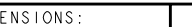
△ MATERIAL:
HARNES - 35% GLASS FILLED PA66, BLACK
ALT MAT'L: HARNES - 30% GLASS FILLED sPS, BLACK
SPACER - 40% GLASS FILLED PPS+PA66, RED
ALT MAT'L: 30% GLASS FILLED sPS, RED
ALT MAT'L: 35% GLASS FILLED PA66, RED
COVER - 35% GLASS FILLED PA66, BLACK
ALT MAT'L: COVER - 30% GLASS FILLED LCP, BLACK
CAM LEVER - 35% GLASS FILLED NYLON, GRAY
GROMMET - SILICONE, BROWN
PERIMETER SEAL - SILICONE, GREEN

2. CAM LEVER AND SPACER ARE SHIPPED IN PRE-LATCH POSITION.

③ SEE PINOUT CHART ON SHEETS 2, 3 AND 4 FOR CLOSED CIRCUIT CONFIGURATIONS.

④ CAVITIES WITH A NUMERIC SYMBOL INDICATES CLOSED TERMINAL LOCATIONS.
BLANK CAVITIES INDICATE OPEN TERMINAL HOLE LOCATIONS.

SHOWN WITH CAM LEVER AND SPACER
IN LOADED POSITION WITH
OPTIONAL WIRESHIELD

<small>1. THIS DRAWING IS THE PROPERTY OF TYCO ELECTRONICS CORPORATION. IT IS TO BE USED FOR THE MANUFACTURE OF THE PARTS SPECIFIED HEREON. IT IS NOT TO BE REPRODUCED OR COPIED FOR ANY OTHER PURPOSE WITHOUT THE WRITTEN PERMISSION OF TYCO ELECTRONICS CORPORATION.</small>		<small>DWN</small> 01AUG2003		 Tyco Electronics		Tyco Electronics Harrisburg, PA 17105-3608	
<small>2. DIMENSIONS:</small> mm		<small>3. TOLERANCES UNLESS OTHERWISE SPECIFIED:</small> 0 P L C ± .3 1 P L C ± .3 2 P L C ± .10 3 P L C ± .3 4 P L C ± .3 ANGLES ± °		<small>4. CHECK</small> D. STRAUSSER		<small>5. NAME</small> 46 WAY PCM CONNECTOR HARNESS ASSEMBLY	
		<small>6. APPROV</small> D. STRAUSSER		<small>7. PRODUCT SPEC</small> -		<small>8. APPLICATION SPEC</small> -	
<small>9. MATERIAL</small> SEE TABLE		<small>10. FINISH</small> SEE TABLE		<small>11. WEIGHT</small> -		<small>12. SIZE</small> A 00779	
				<small>13. CAGE CODE</small> C-1438082		<small>14. DRAWING NO</small> -	
				<small>15. RESTRICTED TO</small> -		<small>16. SCALE</small> 4:1	
				<small>17. SHEET</small> 1 of 5		<small>18. REV</small> 1	
<small>19. CUSTOMER DRAWING</small>				<small>20. SCALE</small> 4:1			

LOC	DIST	REVISIONS					
FX	00	P	LTR	DESCRIPTION	DATE	DWN	APVD
		-		SEE SHEET 1	-	-	-

		44								35		32							22								12		9	7	6				1	6-1438735-7	2LIT-14A464-SD-086															
		44								35		32															12		9	7	6				1	6-1438735-3	2LIT-14A464-SD-085															
										35																											6-1438735-2	2LIT-14A464-SD-084														
			43	42		40	39		37					29					20	18			15	14			11	10	9	8	7			4	3	1	6-1438735-1	2LIT-14A464-SD-083														
45		43						38	36			31				25	24					18	17	16	14	12				7	6			2	1	5-1438735-0	2LIT-14A464-SD-082															
45		43						38	36			31				25	24							16	14	12				7	6			2	1	4-1438735-9	2LIT-14A464-SD-081															
45		43						38	36			32	31			25	24		21	19	18	17	16	14	12				7	6				1	4-1438735-8	2LIT-14A464-SD-080																
45		43					39	38	37	36			31			25	24					18	17	16	14	13	12			9	7	6			2	1	4-1438735-7	2LIT-14A464-SD-079														
				42																20	18				13	11	10								2	1	3-1438735-8	2LIT-14A464-SD-078														
				42																20	18				13	11	10									1	3-1438735-7	2LIT-14A464-SD-077														
45		43					39	38	37	36			31			25	24		21	20	19	18	17		14	13	12			9					2	1	3-1438735-6	2LIT-14A464-SD-076														
45		43						38	36			31				25	24		21	20	19	18	17		14	12									2	1	3-1438735-5	2LIT-14A464-SD-075														
			43	42		40	39		37					29					20	18			15	14			11	10	9	8	7			4	3	2	1	3-1438735-3	2LIT-14A464-SD-074													
45		43					39	38	37	36			31			25	24			20	19	18	17		14	13	12			9					2	1	3-1438735-2	2LIT-14A464-SD-073														
45		43						38	36			31				25	24		21	20	19	18	17	16	14	12				7					2	1	3-1438735-1	2LIT-14A464-SD-072														
45		43					39	38	37	36			31			25	24		21	20	19	18	17	16	14	13	12			9	7					2	1	3-1438735-0	2LIT-14A464-SD-071													
45		43						38	36			31				25	24		21	20	19			16	14	12				7						2	1	2-1438735-9	2LIT-14A464-SD-070													
45		43					39	38	37	36			31			25	24		21	20	19			16	14	13	12			9	7					2	1	2-1438735-8	2LIT-14A464-SD-069													
45		43						38	36			31				25	24			20	19	18	17		14	12										2	1	2-1438735-6	2LIT-14A464-SD-068													
											33															13												2-1438735-5	2LIT-14A464-SD-067													
45	44	43	42		40			38	37	36		33	31				24		22	21	20		18	17	16	15				9	8					2	2-1438735-4	2LIT-14A464-SD-066														
		43										31		29									18							8							2	2-1438735-1	2LIT-14A464-SD-065													
45		43						38		36	35		31			25	24		21					16	14	12				7	6						2	1	2-1438735-0	2LIT-14A464-SD-064												
45		43					39	38	37	36	35		31			25	24						18	17	16	14	13	12			9	7	6					2	1	1-1438735-9	2LIT-14A464-SD-063											
45		43						38		36	35		32	31			25	24		21	19	18	17	16	14	12				7	6						1	1-1438735-8	2LIT-14A464-SD-062													
45		43						38		36	35		31			25	24							16	14	12				7	6						2	1	1-1438735-7	2LIT-14A464-SD-061												
45		43						38		36	35		31			25	24		21	19			16	14	12				7	6							2	1	1-1438735-6	2LIT-14A464-SD-060												
45		43						38		36	35		31			25	24					18	17	16	14	12				7	6						2	1	1-1438735-5	2LIT-14A464-SD-059												
45		43					39	38	37	36	35		31			25	24		21	19	18	17	16	14	13	12			9	7	6					2	1	1-1438735-4	2LIT-14A464-SD-058													
45		43						38		36	35		31			25	24		21	19	18	17	16	14	12				7	6							2	1	1-1438735-3	2LIT-14A464-SD-057												
				42						37										20	18			15	14		11	10	9	8	7			4	3	2	1	1-1438735-2	2LIT-14A464-SD-056													
45		43								36	35		31				24		21	19			16	14	12					7	6							1	1-1438735-1	2LIT-14A464-SD-055												
										35						27																							3		1-1438735-0	2LIT-14A464-SD-054										
			43									31		29									18							9	8								2		1438735-9	2LIT-14A464-SD-053										
										35						27															7										1438735-8	2LIT-14A464-SD-052										
46	45	44	43	42	41	40	39	38	37	36	35	34	33	32	31	30	29	28	27	26	25	24	23	22	21	20	19	18	17	16	15	14	13	12	11	10	9	8	7	6	5	4	3	2	1		PART NUMBER	FORD PART NUMBER				
TERMINAL HOLE POSITION																																																				
PIN-OUT CHART KEYING OPTION "A"																																																				

THIS DRAWING IS UNPUBLISHED. RELEASED FOR PUBLICATION 20		DWN R. VESTAL 01AUG2003		Tyco Electronics Harrisburg, PA 17105-3608	
CHK D. STRAUSSER 01AUG2003		NAME		46 WAY PCM CONNECTOR HARNESS ASSEMBLY	
APVD D. STRAUSSER 01AUG2003		PRODUCT SPEC		SIZE CAGE CODE DRAWING NO RESTRICTED TO	
APPLICATION SPEC		WEIGHT		A 00779 C=1438082 -	
CUSTOMER DRAWING		SCALE 4:1		SHEET 3 OF 5 REV 1	

DIMENSIONS:

mm

TOLERANCES UNLESS OTHERWISE SPECIFIED:

9 PLC ±.3

1 PLC ±0.10

5 PLC ±

4 PLC ±

ANGLES ±°

FINISH -

MATERIAL -

-

Mouser Electronics

Authorized Distributor

Click to View Pricing, Inventory, Delivery & Lifecycle Information:

[TE Connectivity:](#)

[5-1438082-9](#)