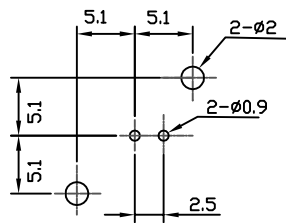
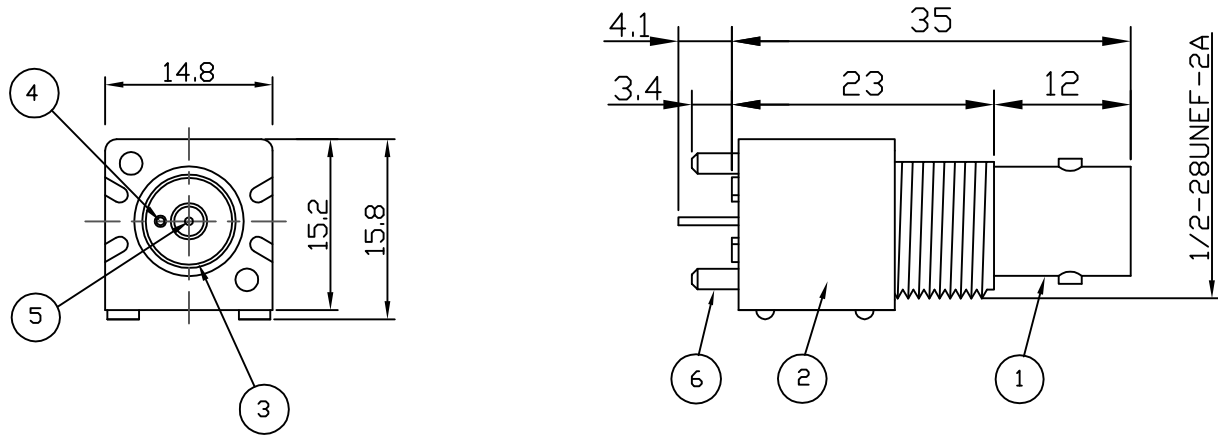
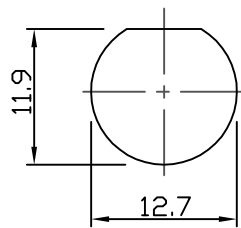


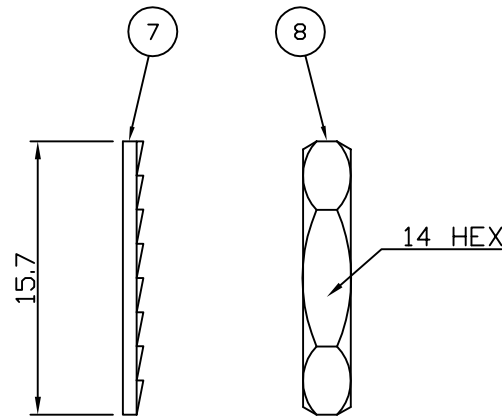
RoHS COMPLIANT



RECOMMENDED PCB LAYOUT



RECOMMENDED PANEL CUTOUT



**Electrical Characteristics**

Nominal Impedance:	50 ohms
Frequency Range:	DC to 1 GHz
VSWR:	1.3:1 maximum
Insertion Loss:	0.2 dB at 1 GHz
Operating Voltage (rms):	500 V maximum at sea level
Dielectric Withstand Voltage (rms):	1500 V maximum at sea level
Contact Resistance:	3.0 milliohms maximum
Insulation Resistance:	5000 megohms minimum

**Mechanical Characteristics**

Mating Cycles:	500 cycles minimum
Interface Dimensions:	Conform to MIL-C-39012

**Environmental Characteristics**

Temperature Range:	-55 °C to +85 °C
--------------------	------------------

REF.	DESCRIPTION	MATERIAL	PLATING
1	Shell	Zinc Alloy	Nickel
2	Body	P.B.T. UL94V-0	
3	Insulator	Polypropylene	
4	Ground Terminal	Copper-Clad Steel	Tin
5	Socket Contact	Phosphor	Gold
6	Mount Post	Brass	Tin > 5 Microns
7	Lock Washer	Steel	Nickel
8	Hex Nut	Brass	Nickel

DESCRIPTION OF REVISION	APPVD	ISS	DATE
ECN 2015-004	JC	5	28 May 15
PCB Layout	MS	4	28 Aug 09
Complete Update	KA	3	13 Mar 08
CAD Issue	SN	2	07 Feb 02
First Issue	DH	1	06 Jan 98



11 Bilton Road,  
Chelmsford, Essex,  
CM1 2UP, UK.  
Tel: +44 (0) 1245 359515  
Fax: +44 (0) 1245 358938

SCALE: Not To Scale	DRAWN BY: S Nash	TITLE: <b>Insulated BNC Vertical PCB Mount Jack</b>	PART NUMBER: <b>VBI301</b>
DIMENSIONS: mm	CHECKED BY: S Nash		
TOLERANCES: ± 0.2mm unless otherwise stated	APPROVED BY: M Nielsen		
	DATE: 07 Feb 02		

PAGE: 1 of 1

# Mouser Electronics

Authorized Distributor

Click to View Pricing, Inventory, Delivery & Lifecycle Information:

[Cinch Connectivity Solutions:](#)

[VBI301](#)