

PRODUCT NUMBER
10082201-YXX-XXLF

PLATING

1 = 0.76µm GOLD OR
0.76µm GXT (PdNi WITH
GOLD FLASH)
ON CONTACT AREA
2µm MATTE TIN ON TAIL

4 = 2µm MATTE TIN
ON CONTACT AREA
AND TAIL

8 = 0.38µm GOLD
ON CONTACT AREA
2µm MATTE TIN
ON TAIL

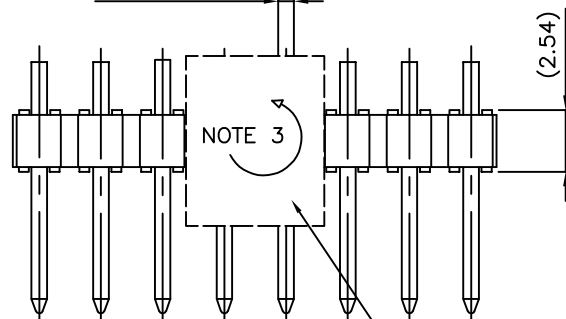
RoHs COMPATIBLE, NOTE 7.

TOTAL NB OF POSITIONS
02 TO 36

PACKAGING, NOTE 3.

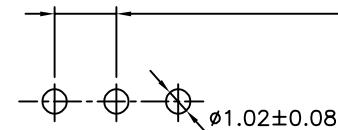
PIN STYLE	MATING SIDE	DIM "B"
01	5.84	2.50
02	6.75	2.50
03	5.84	3.00
04	6.75	3.00
05	11.60	3.00
06	9.50	4.30
07	8.07	3.00
08	3.10	2.50

SQ 0.62 REF



OPTIONAL PICK-UP CAP
(SEE NOTE 3)

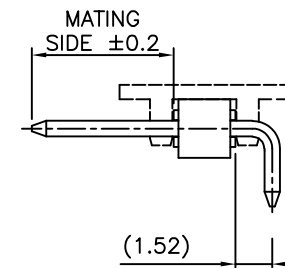
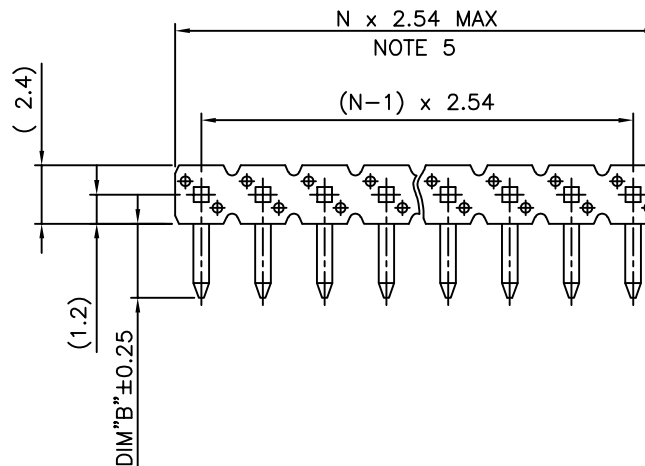
2.54±0.08
NON-ACCUM TYP



RECOMMENDED HOLE PATTERN

NOTES:

- HOUSING MAT'L : HIGH TEMPERATURE THERMOPLASTIC. UL94V-0 COLOR: BLACK
- PIN MATERIAL : PHOSPHOR BRONZE
- PACKAGING.
 - = POLY BAGS
 - A = TAPE & REEL WITH CAP, AS AVAILABLE
 - AD = TAPE & REEL WITH CAP FOR CUSTOMER DEDICATED PART, AS AVAILABLE
 - K = TAPE & REEL WITHOUT PICK UP CAP, AS AVAILABLE
- 9N MIN RETENTION IN EITHER DIRECTION
- TO DETERMINE DIMENSIONS :
N = NUMBER OF POSITIONS PER ROW
EXAMPLE : 8 POS N x 2.54 = 20.32mm
- UNDERPLATING : 1.27µm Ni MIN
- RoHS COMPATIBLE PRODUCT SPECIFICATIONS
 - PLATING:
 - "LF" MEANS THE PRODUCT IS LEAD-FREE, 2µm MINIMUM MATTE TIN OVER 1.27µm MINIMUM NICKEL UNDERPLATE.
 - MANUFACTURING PROCESS COMPATIBILITY
 - THE HOUSING WILL WITHSTAND EXPOSURE TO 260°C PEAK TEMPERATURE FOR 30 SECONDES IN A CONVECTION, INFRA-RED OR VAPOR PHASE REFLOW OVEN.
 - LABELING:
 - MEETS PACKAGING SPECS AS PER GS-14-920
 - LEGAL STATEMENT: SEE GS-47-0004



mat'l. code		surface		tolerance		projection		product family	
SEE NOTES		ISO 1302 ✓		ISO 406 ISO 1101				BERGSTIK	
ltr	ecn no	dr	date	tolerances unless otherwise specified			title		
H	F-49500	DDE	23.10.17	angles	linear	.x ±0.3 .xx ±0.15 .xxx ±0.05	UNSHR.HEADER RA SR PIN IN PASTE		
C	F12-0032	LMU	12.05.04				scale 5:1		
D	B-18990	LMU	14.10.06	dr	L.MULIN	08.01.15	dwg no sheet 1 of 1 size		
E	B-20031	AMA	15.01.20	engr	J.COMPAGNON	08.01.15	10082201 A3		
F	F-23188	AMA	16.02.01	chr			type CUSTOMER Drawing		
G	F-44758	DDE	22.05.16	appd	JM.C	08.01.15			
sheet	revision								
index	sheet								