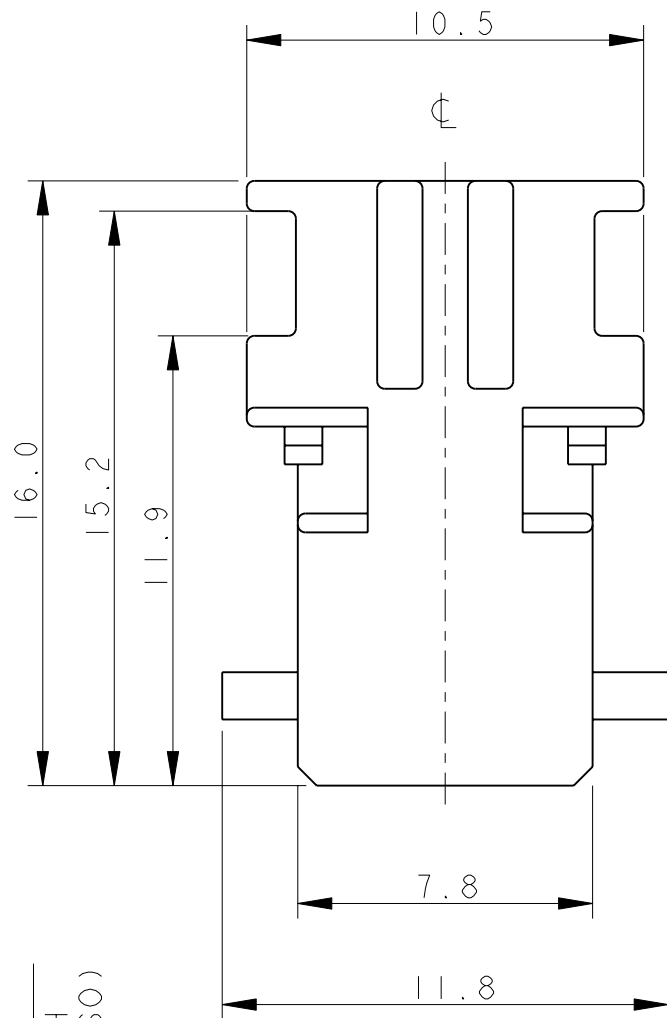
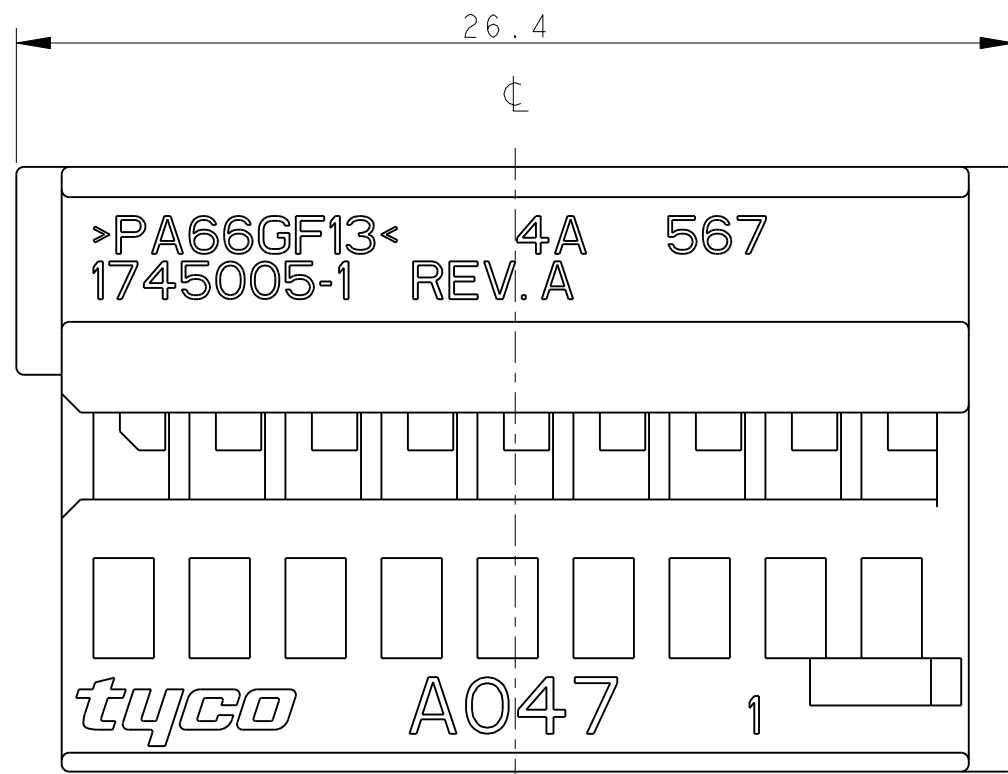


THIS DRAWING IS UNPUBLISHED.
 QUESTO DISEGNO NON DEVE ESSERE DIVULGATO O RIPRODOTTO
 © COPYRIGHT 2003 Tyco Electronics AMP GmbH

RELEASED FOR PUBLICATION
 E' CONSENTITA LA DIVULGAZIONE
 2003
 ALL RIGHTS RESERVED.
 TUTTI I DIRITTI SONO RISERVATI

LOC 1
 DIST -

REVISIONS		DESCRIPTION	DATE	DWN	APVD
REVISIONI		DESCRIZIONE	DATA	DIS.	APP.
P	LTR REV				
	0	EMISSIONE PRELIMINARE (PRELIMINARY ISSUE)	07MAR2003	M.S.	O.C.
	1	ERA (WAS) P/N 03-51039-3	04NOV2003	M.S.	O.C.
	A	PRIMA EMISSIONE (FIRST ISSUE) ET00-0043-04	11JUN2004	M.P.	O.C.
	A1	RILASCIATO IN PRODUZIONE (RELEASED FOR PRODUCTION) ET00-0239-04	04FEB2005	M.P.	O.C.
	A2	ECR-11-017843	05SEP2011	M.P.	O.C.

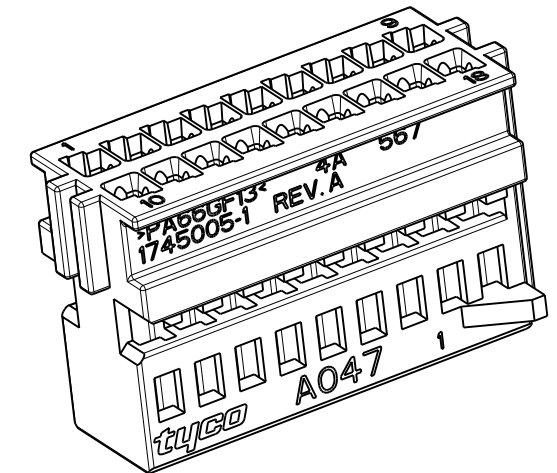


NOTES:
(NOTE)

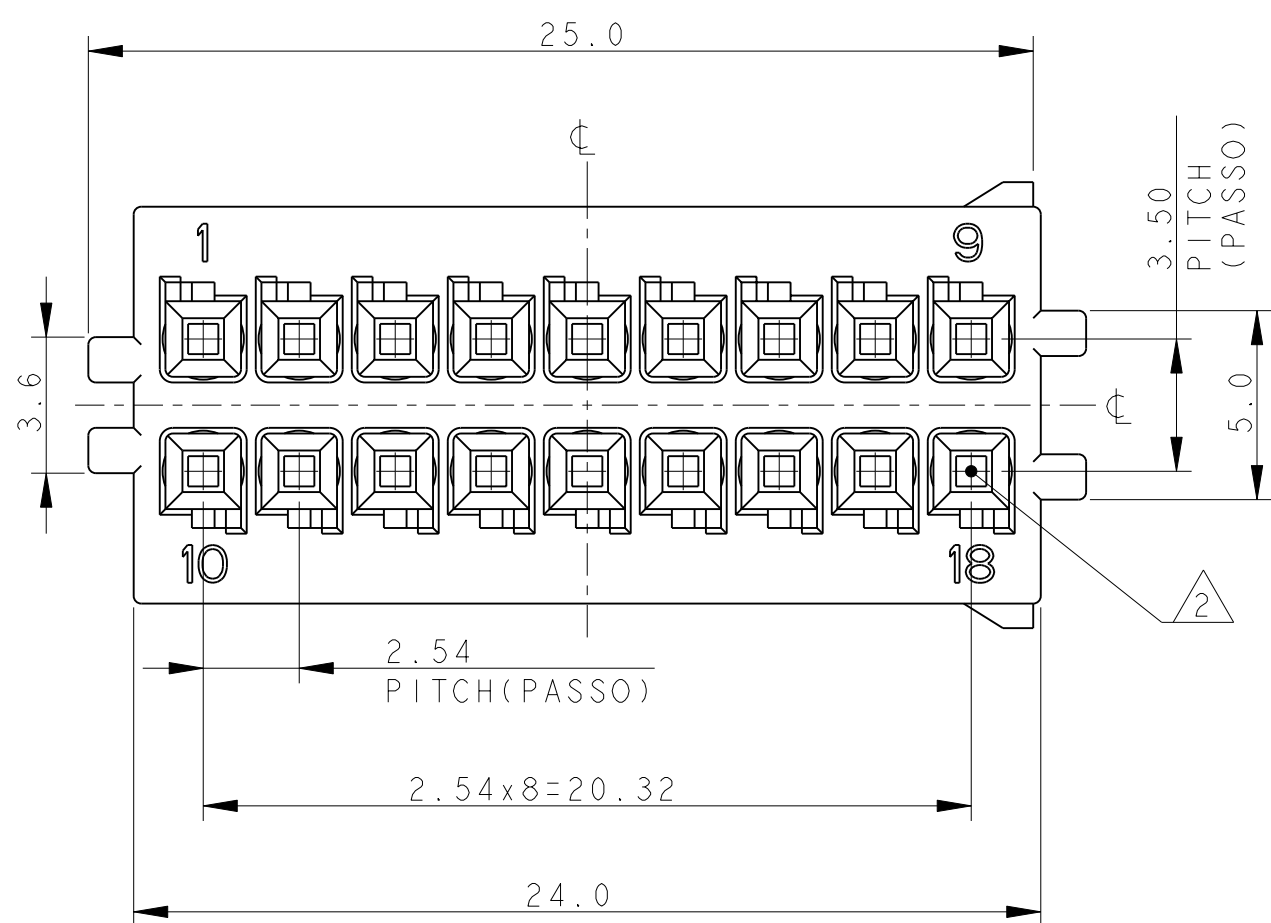
1) HOUSING MATERIAL: PA66 GF COLOUR BLACK
 (MATERIALE BLOCCHETTO: PA66 CARICATO VETRO COLORE NERO)

2) CAVITIES SUITABLE FOR REC. MQS CONTACT
 P/N 928999-1
 (CAVITA' ADATTE PER CONTATTO FEMMINA MQS P/N 928999-1)

3) HOUSING SUITABLE FOR FRAME 18 POSITIONS
 P/N 1745003-1
 (PORTAFEMMINE ADATTO PER CORAZZA 18 POSIZIONI P/N 1745003-1)



P/N 1745005-1 BLACK AS SHOWN
 (NERO COME MOSTRATO)

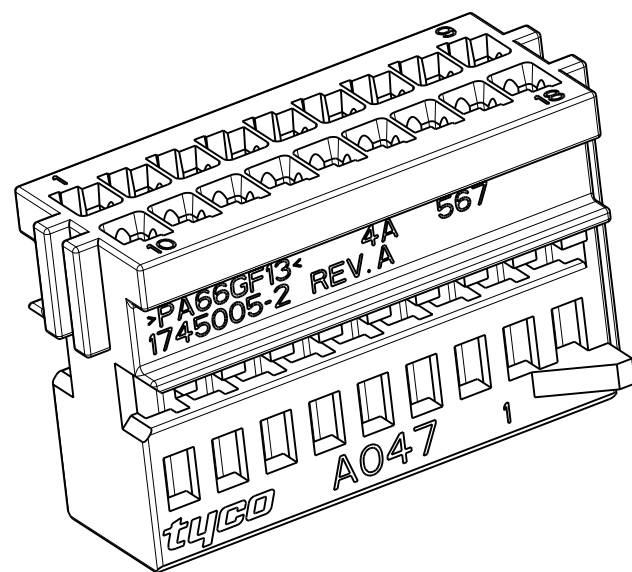
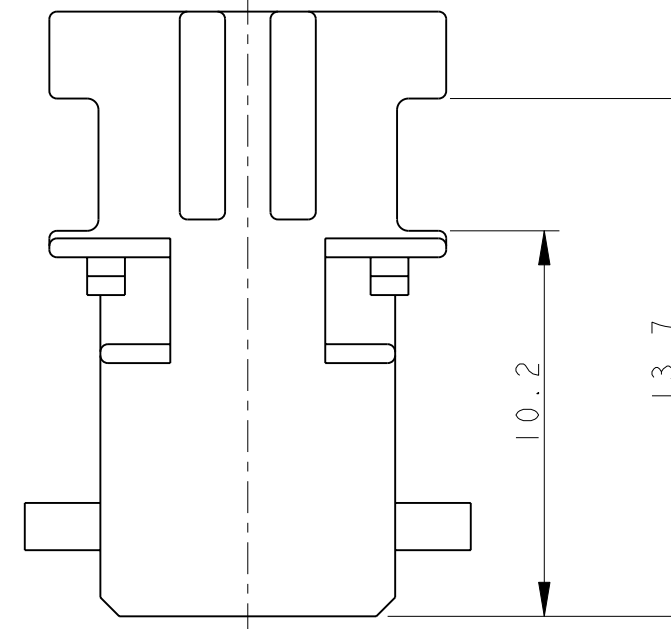
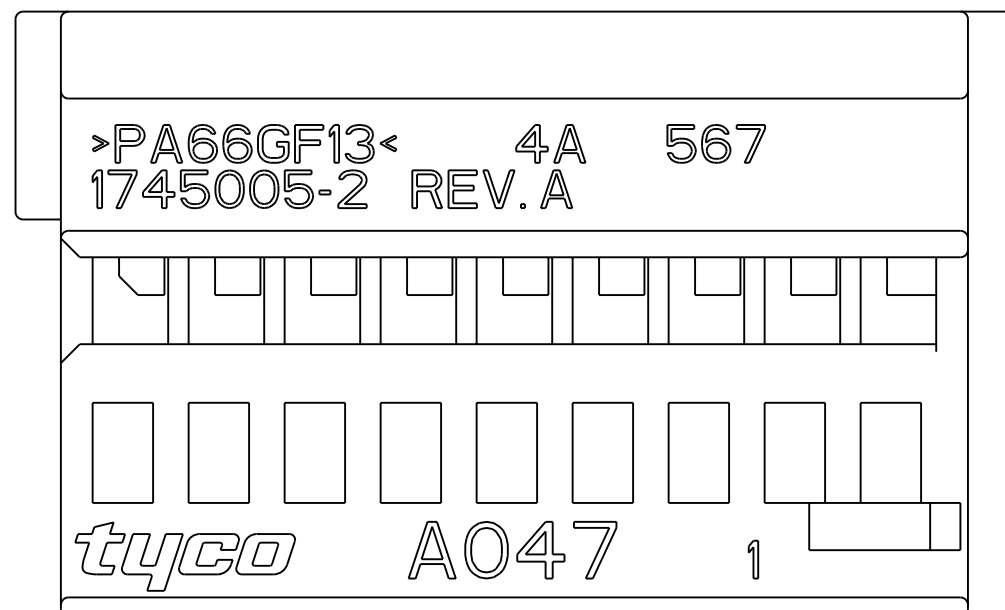


THIS DRAWING IS A CONTROLLED DOCUMENT. <small>QUESTO DISEGNO E' UN DOCUMENTO DI PROPRIETA' E RESPONSABILITA' DELL'AMP INCORPORATED. E' SOGGETTO A VARIAZIONI. PER OTTENERE L'ULTIMA REVISIONE DEL DISEGNO CONTATTARE L'UFFICIO TECNICO RESPONSABILE.</small>	
DIMENSIONS: DIMENSIONI: mm	TOLERANCES UNLESS OTHERWISE SPECIFIED: TOLLERANZE: SE NON DIVERSAMENTE SPECIFICATO
	0 PLC/DEC ±0.5 1 PLC/DEC ±0.3 2 PLC/DEC ±0.2 3 PLC/DEC ± 4 PLC/DEC ± ANGLES / ANGOLI ±1°
MATERIAL MATERIALE	FINISH FINITURA

DWN/DIS. M. SARDI	07MAR2003
CHK/CONT. O. CANUTO	07MAR2003
APVD/APP. A. GENTA	07MAR2003
PRODUCT SPEC SPEC. DI PRODOTTO	108-20182
APPLICATION SPEC SPEC. DI APPLICAZIONE	411-20056
WEIGHT PESO	-

		TE Connectivity	
		NAME 18 POS. MQS RECEPTACLE HOUSING PITCH 2.54mm (PORTAFEMMINE MQS 18 VIE PASSO 2.54mm)	
SIZE A3	CAGE CODE 00779	DRAWING NO C-1745005	RESTRICTED TO -
CUSTOMER DRAWING		DISEGNO PER CLIENTE SOLO PER RIFERIMENTO	SCALE 5:1 SHEET FOGLIO 1 OF DI 2 REV A2

LOC	DIST	REVISIONS					
		P	LTR	DESCRIPTION	DATE	DWN	APVD
1	-	-	-	SEE SHEET 1	-	-	-





SCALE 3:1

3) HOUSING SUITABLE FOR FRAME 18 POSITIONS
P/N 1745003-2
(PORAFEMMINE ADATTO PER CORAZZA 18
POSIZIONI P/N 1745003-2)

P/N 1745005-2 COLOUR GRAY AS SHOWN
(COLORE GRIGIO COME MOSTRATO)

FOR MISSING DIMENSIONS AND NOTES SEE P/N 1745005-1 (SHEET 1/2)
(PER LE DIMENSIONI E NOTE MANCANTI VEDI P/N 1745005-1 (FOGLIO 1/2))

THIS DRAWING IS A CONTROLLED DOCUMENT.		DWN M. SARDI 07MAR2003	 TE Connectivity	
DIMENSIONS: mm		CHK O. CANUTO 07MAR2003		
TOLERANCES UNLESS OTHERWISE SPECIFIED:		APVD A. GENTA 07MAR2003	NAME 18 POS. MQS RECEPTACLE HOUSING PITCH 2.54mm (PORTAFEMMINE MQS 18 VIE PASSO 2.54mm)	
0 PLC ±0.5 1 PLC ±0.3 2 PLC ±0.2 3 PLC ± 4 PLC ± ANGLES ±°		PRODUCT SPEC 108-20182	SIZE A300779	
MATERIAL		APPLICATION SPEC 411-20056	CAGE CODE C=1745005	DRAWING NO 1745005
FINISH		WEIGHT -	RESTRICTED TO -	
		CUSTOMER DRAWING		SCALE 5:1
				SHEET 2 OF 2
				REV A2

Mouser Electronics

Authorized Distributor

Click to View Pricing, Inventory, Delivery & Lifecycle Information:

[TE Connectivity:](#)

[1745005-2](#)