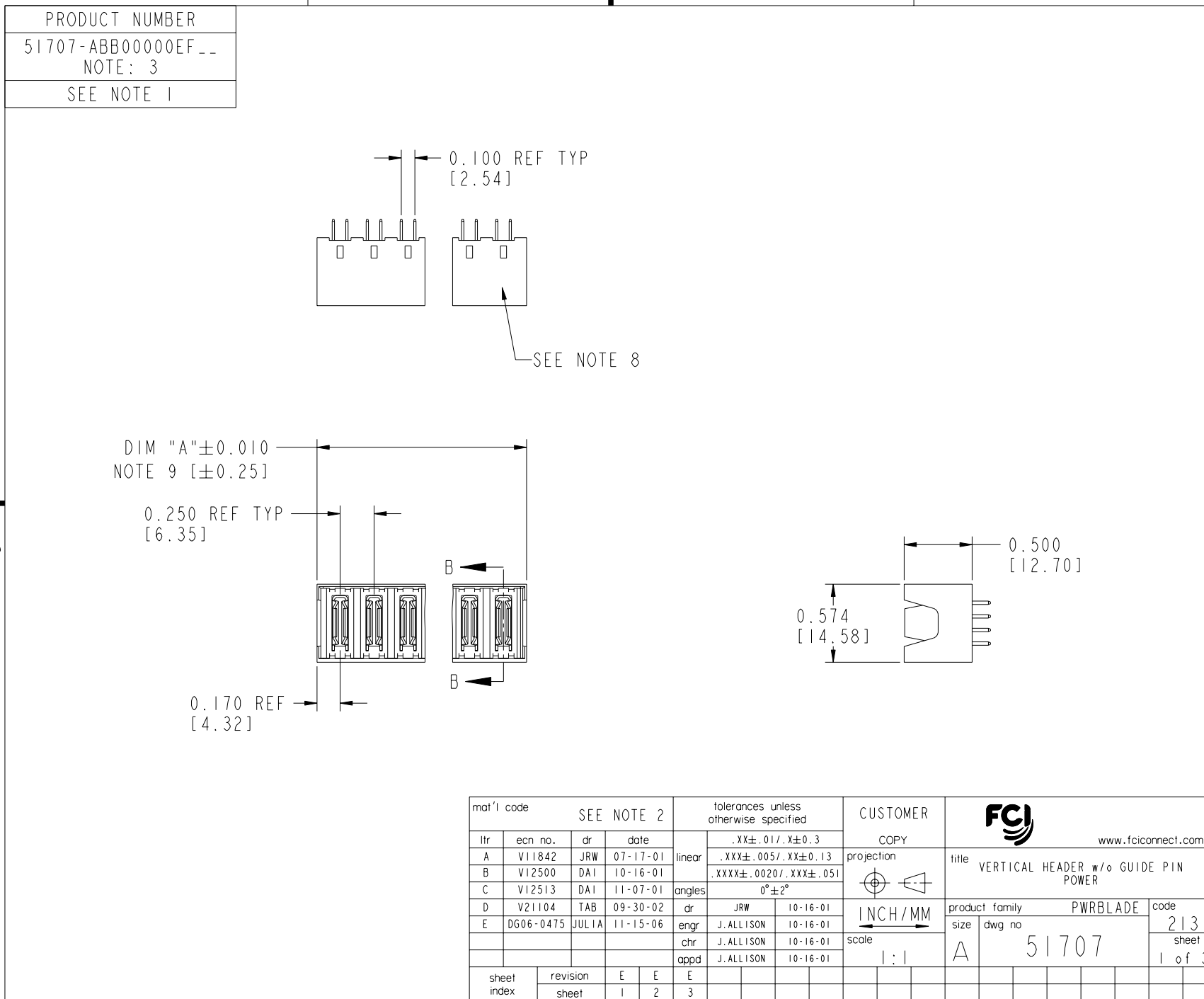

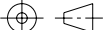





All rights strictly reserved. Reproduction or issue to third parties in any form whatever is not permitted without written authority from the proprietor. Property of FCI. Copyright FCI.

Tous droits strictement reserves. Reproduction ou communication a des tiers interdite sous quelque forme que ce soit sans autorisation ecrite du proprietaire. Propriete de c FCI. Droits de reproduction FCI.



mat'l code				SEE NOTE 2				tolerances unless otherwise specified				CUSTOMER				 www.fciconnect.com			
ltr	ecn no.	dr	date	linear	$.XX\pm.01 / .X\pm0.3$				COPY					title					
A	V11842	JRW	07-17-01		$.XXX\pm.005 / .XX\pm0.13$				projection					VERTICAL HEADER w/o GUIDE PIN POWER					
B	V12500	DAI	10-16-01		$.XXX\pm.0020 / .XXX\pm.051$														
C	V12513	DAI	11-07-01	angles	$0^{\circ}\pm2^{\circ}$									product family					
D	V21104	TAB	09-30-02	dr	JRW	10-16-01						PWRBLADE							
E	DG06-0475	JULIA	11-15-06	enrg	J. ALLISON	10-16-01						code							
				chr	J. ALLISON	10-16-01						size	dwg no	213					
				appd	J. ALLISON	10-16-01						A	51707	sheet					
sheet index		revision sheet	E 1	E 2	E 3												1 of 3		



PRODUCT NUMBER	DIM	LENGTH FORMULAS (SEE NOTE 9)
51707-ABB00000EF__ NOTE: 3	DIM "A"	.250 [6.35] x BB + .090 [2.29] (NOTE 9)
SEE NOTE 1	DIM "F"	.250 [6.35] x BB + .120 [3.05]

#### CONNECTOR NOTES:

- ①. PRODUCT NUMBER CODE:  
51707 - A BB 000 00 E F LF
- NO THIS SUFFIX: 100u"/2.54um SnPb ON PCB INTERACE  
ADD THIS SUFFIX: 78u"/2.00um Sn OR 5u" Au ON PCB INTERFACE  
ALWAYS "0" (ZERO) (NOTE 7)  
TAIL OPTIONS (NOTE 6)  
ALWAYS '00' (ZERO,ZERO)  
ALWAYS '000' (ZERO,ZERO,ZERO) (NOTE 5)  
NUMBER OF POWER CONTACTS (NOTE 4)  
PLATING (NOTE 3)  
BASE NUMBER

- ②. HOUSING MATERIAL: UL94 V-0 HIGH GLASS FILLED TEMP THERMO PLASTIC  
POWER CONTACT MATERIAL: COPPER ALLOY
- ③. 51707-1BB00000EF;51707-1BB00000EFLF;51707-3BB00000EFLF PLATING SPEC.  
SEE PRINT:10064183
- ④. POWER CONTACTS, 01 TO 20 AVAILABLE.  
MAXIMUM OF 20 POWER CONTACTS PER CONNECTOR
- ⑤. THIS PART IS NOT AVAILABLE WITH SIGNAL CONTACTS.
- ⑥. TAIL OPTIONS:  
A = 0.135 +0.015/-0.010 [3.43 +0.38/-0.25] SOLDER TO BOARD  
B = 0.165 +0.015/-0.010 [4.19 +0.38/-0.25] SOLDER TO BOARD  
C = 0.165 +0.015/-0.010 [4.19 +0.38/-0.25] PRESS FIT

- ⑦. BOARD RETENTION NOT AVAILABLE WITH GUIDELESS ENDS.
- ⑧. MANUFACTURE'S NAME, P/N, AND DATE CODE TO APPEAR ON THIS SURFACE.
- ⑨. THE MAXIMUM OVERALL LENGTH (DIM A) OF A PART IS 8.00 [203.2]
10. PRODUCT SPECIFICATION GS-12-149
11. SEE PWRBLADE VERTICAL HEADER SPECIAL WORKSHEET (51696) FOR MATING LENGTH OPTIONS.
12. DIMENSIONS AND TOLERANCES ARE IN ACCORDANCE WITH ASME Y14.5M, 1994 UNLESS OTHERWISE

#### PCB NOTES:

13. ALL DIMENSIONS ARE BASIC UNLESS OTHERWISE SPECIFIED.
14. ALL THROUGH HOLES ARE LOCATED WITH A TRUE POSITION OF 0.004 [0.10]
15. ALL HOLE DIAMETERS ARE FINISHED HOLE SIZE.
16.  $\varnothing 0.0453 \pm 0.0010$  [1.151  $\pm 0.025$ ] DRILLED HOLES PLATED WITH 0.0003 [0.008] MIN SnPb OVER 0.001 [0.03] TO 0.003 [0.08] Cu PLATING TO ACHIEVE A  $\varnothing 0.040 \pm 0.003$  [1.02  $\pm 0.07$ ] HOLE.
17. FOR PRESS FIT APPLICATION USE FCI CAM TOOL 430169-XXX.

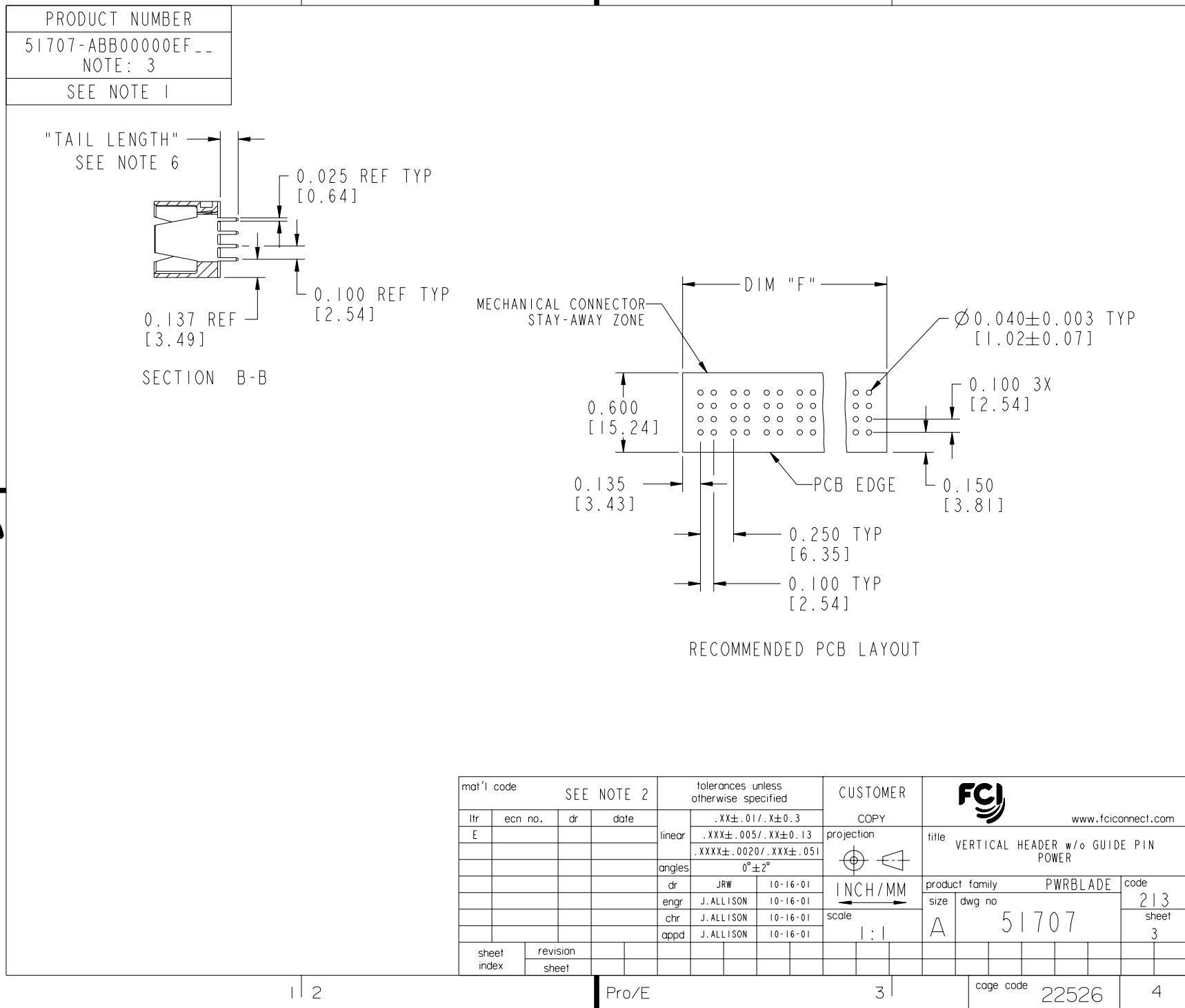
mat'l code SEE NOTE 2				tolerances unless otherwise specified		CUSTOMER		FCI	
ltr	ecn no.	dr	date	linear	.XX±.01/.X±0.3	COPY		www.fciconnect.com	
E					.XXX±.005/.XX±0.13	projection		title	
				angles	.XXX±.0020/.XXX±.051			VERTICAL HEADER w/o GUIDE PIN POWER	
				dr	0°±2°			product family	
				enrg	JRW 10-16-01	INCH/MM		PWRBLADE	
				chr	J. ALLISON 10-16-01	scale		code	
				appd	J. ALLISON 10-16-01	3:2		213	
sheet index	revision sheet							size	sheet
								dwg no	2

cage code 22526

Pro/E

3

4



# Mouser Electronics

Authorized Distributor

Click to View Pricing, Inventory, Delivery & Lifecycle Information:

[FCI / Amphenol:](#)

[51707-10200000C0LF](#) [51707-10900000C0LF](#) [51707-10600000A0LF](#) [51707-10300000A0LF](#)