

4

3

2

1

THIS DRAWING IS UNPUBLISHED.

RELEASED FOR PUBLICATION

1825032 , 1825032

© COPYRIGHT

By -

ALL RIGHTS RESERVED.

LOC

DIST

AD00

REVISIONS

P	LTR	DESCRIPTION	DATE	DWN	APVD
	A2	REVISED PER ECO-11-021742	05NOV11	KH	PO

1. OPERATING TEMPERATURE: -20°C TO 80°C.

2. STORAGE TEMPERATURE: -40°C TO 80°C.

3. CONTACT TIMING: NON-SHORTING.

4. CONTACT RATING: 0.4VA @ 20VDC.

5. CONTACT RATING MAXIMUM: 50mA 48V AC/DC.

6. CONTACT RATING MINIMUM: 1µA 20mV AC/DC.

7

CONTACT PLATING: GOLD OVER NICKEL.

8

FIXED CONTACT/TERMINAL: GOLD OVER NICKEL.

9

FRAME PLATING: TIN OVER NICKEL.

10. INITIAL CONTACT RESISTANCE: LESS THAN 50 MILLIOHMS PER EIA 364-23B.

11. FINAL CONTACT RESISTANCE: 100 MILLIOHMS MAX PER EIA 364-23B.

12. INSULATION RESISTANCE: 500 MEGOHMS MIN AT 250VDC PER EIA 364-21C.

13. DIELECTRIC STRENGTH: 500VAC BETWEEN TERMINALS AND GROUND PER EIA 364-20B, CONDITION 1.

14. VIBRATION PER EIA 364-28D, CONDITION VII, LEVEL E.

15. MECHANICAL SHOCK PER EIA 364-27B, CONDITION A.

16. LIFE EXPECTANCY: ON-OFF ELECTRICAL SWITCHING OPERATIONS PER EIA 364-9C  
10 CYCLES PER MINUTE AT THE FOLLOWING RATED LOAD.

TYPE	MAXIMUM CONTACT RATING	0.4 VA	MINIMUM CONTACT RATING
D.E	10000 (OPERATIONS)	30000 (OPERATIONS)	30000 (OPERATIONS)

17. ACTUATION FORCE: 70-500g PER EIA 364-13B.

18. THERMAL SHOCK PER EIA 364-32C, -25°C TO 85°C.

19. HUMIDITY-TEMPERATURE CYCLING PER EIA 364-31B, METHOD III.

20. TEMPERATURE LIFE PER EIA 364-17B, METHOD B, TEMPERATURE TEST CONDITION 3, TIME CONDITION B.

21. RESISTANCE TO SOLDER HEAT PER 109-202,CON B.

22. SOLDERABILITY PER EIA 364-52, CLASS 2, CATEGORY 1.

23. SEALED PER IEC 529, IP67.

24. ALL MATERIALS AND FINISHES SHALL COMPLY WITH EU DIRECTIVE 2000/95/EC OF 27 JAN2003 (ROHS)

COLOR- BLACK	PA RESIN	SLIDE PLATE
COLOR- BLACK	PEI RESIN	BASE
OIL TREATED	PIANO WIRE	SPRING
COLOR- WHITE	PA RESIN	SLIDE PIN
-	SILICON RUBBER	ACTUATOR BOOT
<div>7</div>	PHOS BRONZE	MOVING CONTACT
<div>8</div>	PHOS BRONZE	FIXED CONTACT /TERMINAL
COLOR- YELLOW	PBT RESIN	ACTUATOR
<div>9</div>	BRASS	FRAME
COLOR- GRAY	PBT RESIN	CASE
FINISH	MATERIAL	PART DESCRIPTION

ON 2-3 5-6	OFF	ON 2-1 5-4	ALCO	SE2EGPC04	1825032-4			
ON 2-3 5-6	NONE	ON 2-1 5-4	ALCO	SE2DGP04	1825032-3			
ON 2-3	OFF	ON 2-1	ALCO	SE1EGPC04	1825032-2			
ON 2-3	NONE	ON 2-1	ALCO	SE1DGPC04	1825032-1			
<div>TYCO</div> <div>POSITION A</div>	<div>TYCO</div>	<div>TYCO</div> <div>POSITION B</div>	MARKINGS	ALCOSWITCH PART NUMBER	PART NUMBER			
CIRCUIT ARRANGEMENT								
CIRCUIT CHARACTERISTICS								

THIS DRAWING IS A CONTROLLED DOCUMENT.

DIMENSIONS:

mm

TOLERANCES UNLESS OTHERWISE SPECIFIED:

0 PLC ± -  
1 PLC ± -  
2 PLC ± 0.25  
3 PLC ± -  
4 PLC ± -  
ANGLES ± 0°30'

MATERIAL

-

FINISH

-

DWN

B.S.VISWESWARA

03MAR05

CHK

M.S.SARVER

APVD

-

PRODUCT SPEC

-

APPLICATION SPEC

-

WEIGHT

-

CUSTOMER DRAWING

TE Connectivity

SWITCH, SLIDE, SEALED  
SE(\*\*)GPC

SIZE

A2

CAGE CODE

-

DRAWING NO

C=1825032

RESTRICTED TO

-

SCALE

1:1

SHEET

1 of 2

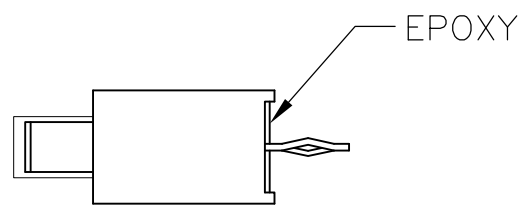
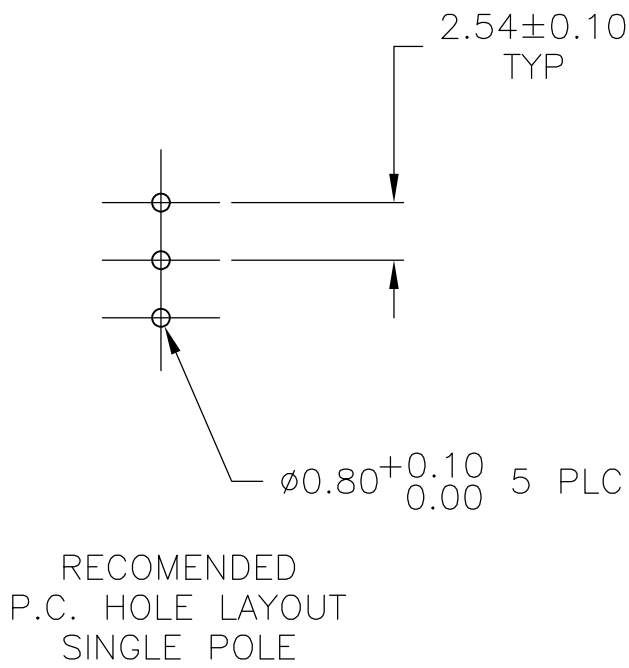
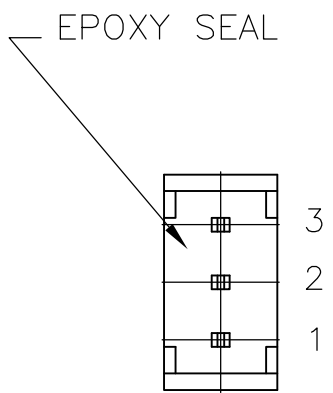
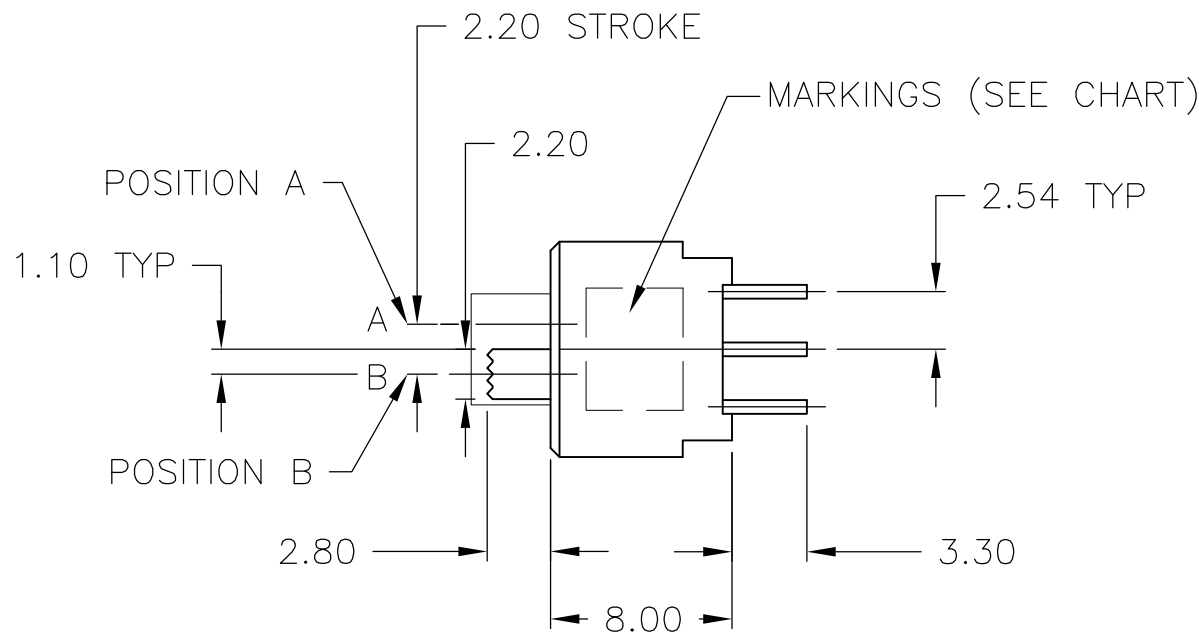
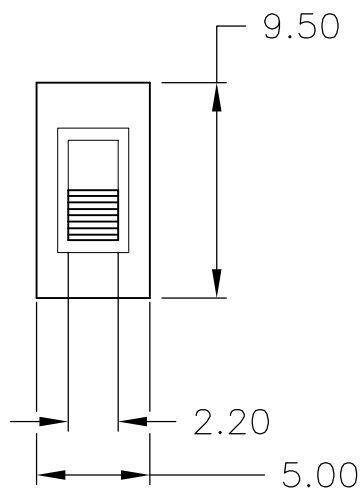
REV

A2

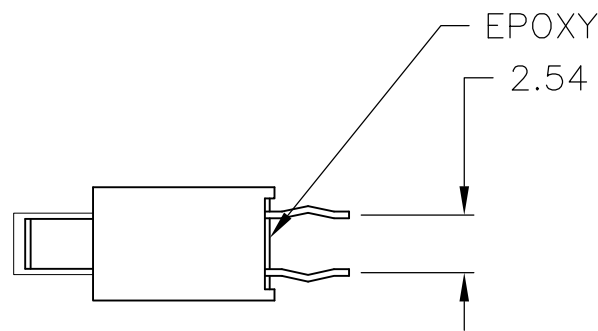
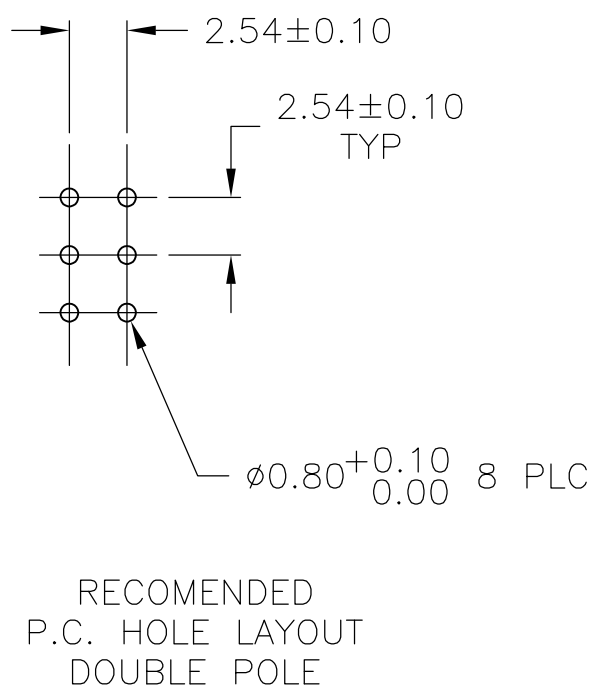
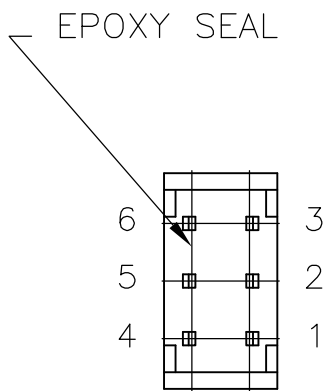
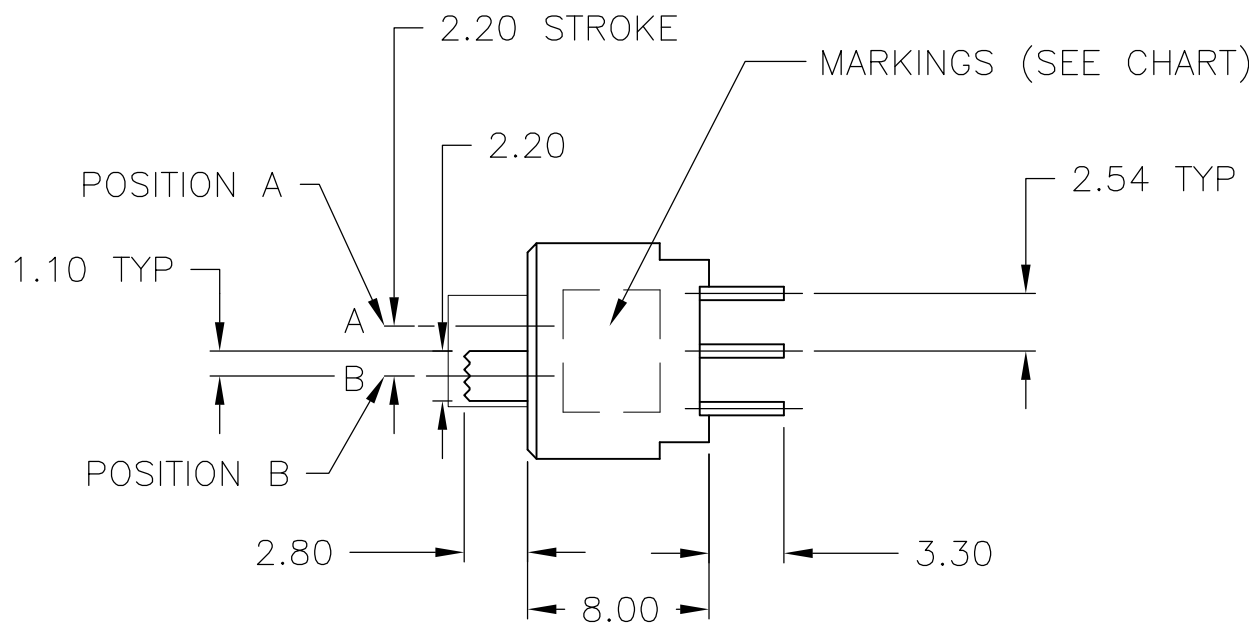
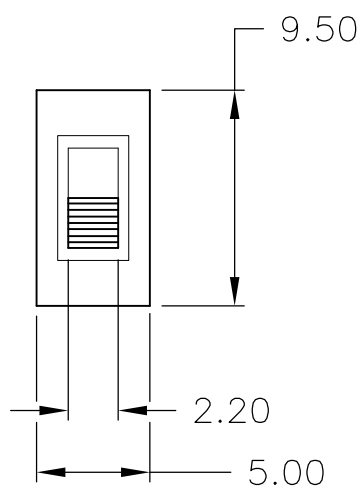
1825032

1471-9 (3/11)

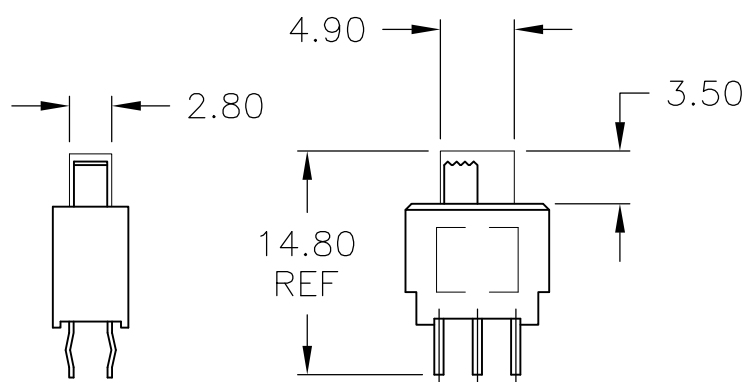
LOC	DIST	REVISIONS				
		P	LTR	DESCRIPTION	DATE	DWN
AD	00	-	-	SEE SHEET 1	-	-



SINGLE POLE



DOUBLE POLE



ACTUATOR BOOT  
DIMENSIONS  
SCALE 2:1

THIS DRAWING IS A CONTROLLED DOCUMENT.		DWN B.S.VISWESWARA	03MAR05	TE Connectivity		
DIMENSIONS: mm		CHK M.S.SARVER	-			
	TOLERANCES UNLESS OTHERWISE SPECIFIED:		APVD -	NAME		
	0 PLC ± -		PRODUCT SPEC	SWITCH, SLIDE, SEALED SE(**)GPC		
	1 PLC ± -		APPLICATION SPEC			
MATERIAL -	FINISH -		WEIGHT -	SIZE A2	CAGE CODE -	DRAWING NO C=1825032
			CUSTOMER DRAWING	SCALE 3:1	SHEET 2 OF 2	REV A2

# Mouser Electronics

Authorized Distributor

Click to View Pricing, Inventory, Delivery & Lifecycle Information:

[TE Connectivity:](#)

[SE1DGPC04](#)