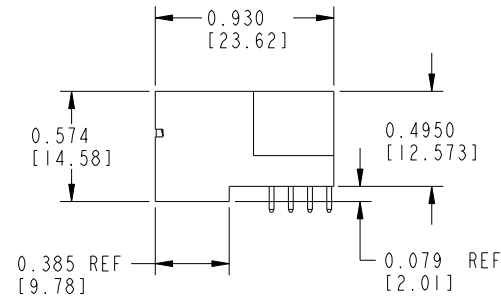
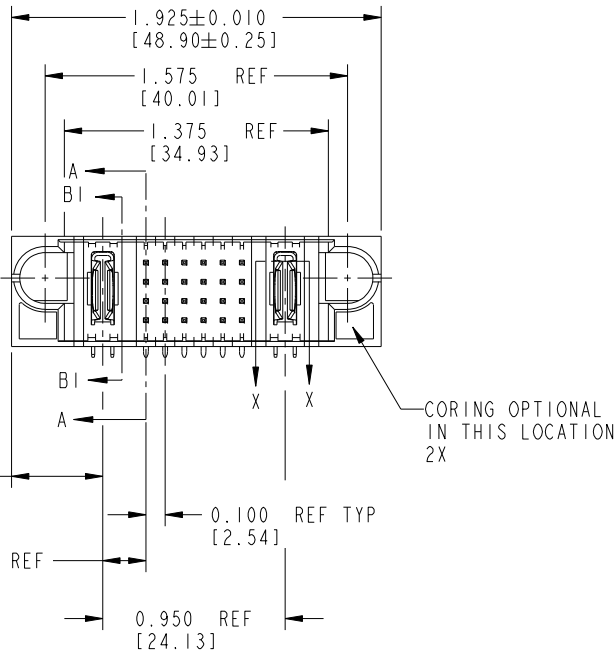
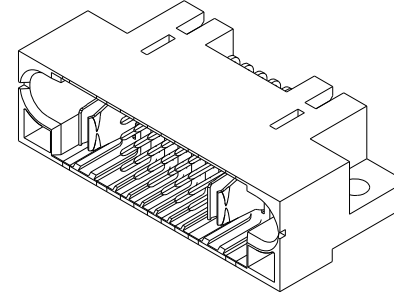
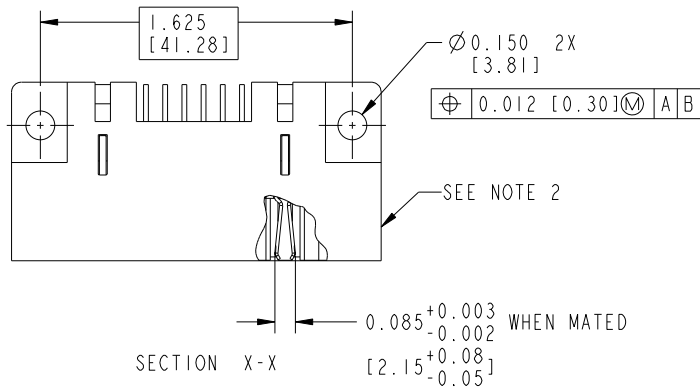

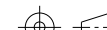


PRODUCT NUMBER
51415-00X--
SEE NOTE: 3



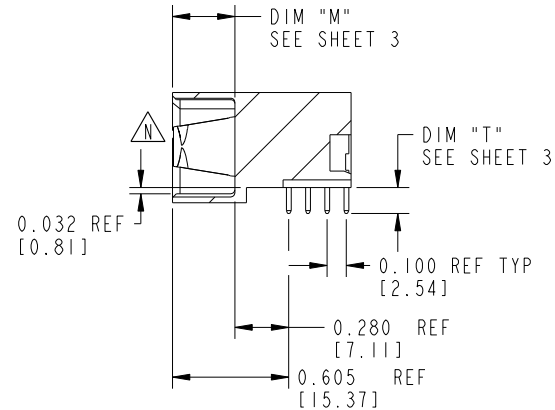
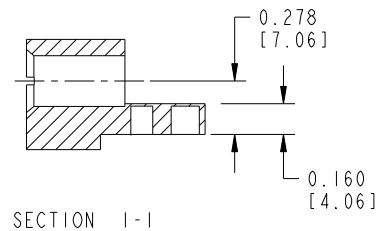
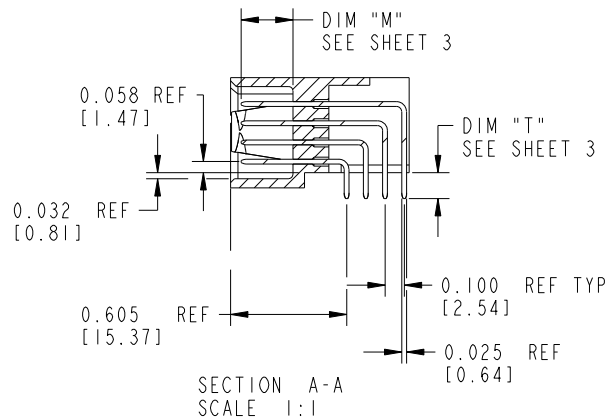
mat'l code				SEE NOTES				tolerances unless otherwise specified				CUSTOMER				<div>www.fciconnect.com</div>			
ltr		ecn no.		dr		date		<div>linear</div> <div>angles</div>		.XX±.01/.X±.3		projection		<div></div> <div>title</div> <div>IP + 24S + IP</div> <div>Right Angle Solder Header</div>					
K		DG05-0064		SW		3/30/05				.XXX±.005/.X±.13		INCH/MM							
L		DG05-0435		SW		11/03/05				.XXX±.0020/.XXX±.051		scale							
M		DG08-0237		W D		09/01/08				0°±2°		1:1							
N		DG08-0272		W D		09/25/08				C. BAROT 01-12-99		product family							
								enrg		J. BROWN 01-12-99		size		PWRBLADE					
								chr		J. BROWN 01-12-99		dwg no		213					
								appd		J. BROWN 01-12-99		A		51415					
														sheet					
														1 of 5					
sheet index		revision sheet		N		N		N		N									
				1		2		3		4		5							

Tous droits strictement reserves. Reproduction ou communication a des tiers interdite sous quelque forme que ce soit sans autorisation écrite du propriétaire. Propriete de c FCI. Droits de reproduction FCI.



All rights strictly reserved. Reproduction or issue to third parties in any form whatever is not permitted without written authority from the proprietor. Property of FCI. Copyright FCI.

PRODUCT NUMBER
51415-00X__



mat'l code				SEE NOTES		tolerances unless otherwise specified		CUSTOMER		FCI			
ltr	ecn no.	dr	date	linear		.XX±.01/0.X±0.3		COPY		www.fciconnect.com			
N						.XXX±.005/0.XX±0.13		projection		title			
						.XXX±.0005/0.XXX±.051				IP + 24S + IP			
				angles		0°±2°				Right Angle Solder Header			
				dr	C. BAROT	01-12-99		INCH/MM		product family		code	
				enr	J. BROWN	01-12-99		1:1		PWRBLADE		213	
				chr	J. BROWN	01-12-99				size	dwg no	sheet	
				appd	J. BROWN	01-12-99				A	51415	2 of 5	
sheet index	revision sheet												

Pro/E

PDM: Rev:N

STATUS: Released

Printed: Dec 20, 2010



PRODUCT NUMBER
51415-00X__

ITEM NO.	QTY	DIM "M" MATING LENGTH ±.010		DIM "T" TAIL LENGTH ±.020		CONTACT TYPE
PA	2	N/A	[N/A]	0.135	[3.43]	POWER
F	1	0.220	[5.59]	0.135	[3.43]	SIGNAL
R	6	0.270	[6.86]	0.135	[3.43]	SIGNAL
S	5	0.270	[6.86]	0.135	[3.43]	SIGNAL
T	6	0.270	[6.86]	0.135	[3.43]	SIGNAL
U	6	0.270	[6.86]	0.135	[3.43]	SIGNAL


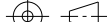

ITEM NO.	QTY	DIM "M" MATING LENGTH ±.010		DIM "T" TAIL LENGTH ±.020		CONTACT TYPE
PS	2	N/A	[N/A]	0.135	[3.43]	POWER
E	6	0.220	[5.59]	0.135	[3.43]	SIGNAL
F	5	0.220	[5.59]	0.135	[3.43]	SIGNAL
G	6	0.220	[5.59]	0.135	[3.43]	SIGNAL
H	6	0.220	[5.59]	0.135	[3.43]	SIGNAL
S	1	0.270	[6.86]	0.135	[3.43]	SIGNAL

ITEM NO.	QTY	DIM "M" MATING LENGTH ±.010		DIM "T" TAIL LENGTH ±.020		CONTACT TYPE
PS	2	N/A	[N/A]	0.135	[3.43]	POWER
F	1	0.220	[5.59]	0.135	[3.43]	SIGNAL
R	6	0.270	[6.86]	0.135	[3.43]	SIGNAL
S	5	0.270	[6.86]	0.135	[3.43]	SIGNAL
T	6	0.270	[6.86]	0.135	[3.43]	SIGNAL
U	6	0.270	[6.86]	0.135	[3.43]	SIGNAL

PRODUCT No.	ROWS	POWER		SIGNAL						POWER	
		E1	P1	1	2	3	4	5	6	P2	E2
51415-001-- NOTE ③	D C B A			UUUUUU	TTTTTT	SSSFFF	SSSFFF	SSSFFF	SSSFFF		

PRODUCT No.	ROWS	POWER		SIGNAL						POWER	
		E1	P1	1	2	3	4	5	6	P2	E2
51415-002-- NOTE ③	D C B A			HHHHHH	GGGGGG	FFFFSS	FFFFSS	FFFFSS	FFFFSS		

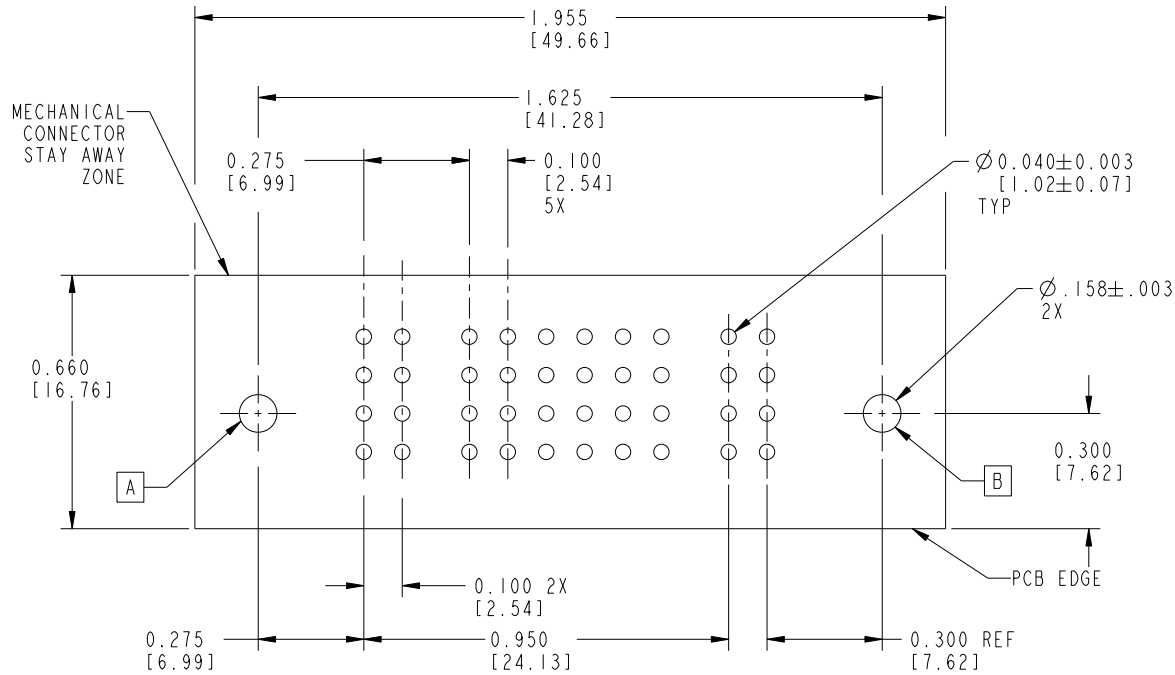
PRODUCT No.	ROWS	POWER		SIGNAL						POWER	
		E1	P1	1	2	3	4	5	6	P2	E2
51415-003-- NOTE ③	D C B A			UUUUUU	TTTTTT	SSSFFF	SSSFFF	SSSFFF	SSSFFF		

mat'l code				SEE NOTES				tolerances unless otherwise specified				CUSTOMER										
ltr		ecn no.		dr		date		linear	.XX±.01/0.X±0.3				COPY				www.fciconnect.com					
N									.XXX±.005/0.XX±0.13				projection				title					
									.XXXX±.0005/0.XXX±.051								IP + 24S + IP					
								angles	0°±2°								Right Angle Solder Header					
								dr	C. BAROT		01-12-99		INCH/MM				product family		PWRBLADE		code	
								enrg	J. BROWN		01-12-99		scale				size		dwg no		213	
								chr	J. BROWN		01-12-99		1:1				A		51415		sheet	
								appd	J. BROWN		01-12-99										3 of 5	
sheet index		revision sheet																				

cage code 22526



PRODUCT NUMBER
51415-00X__



RECOMMENDED PCB LAYOUT

mat'l code				SEE NOTES		tolerances unless otherwise specified		CUSTOMER		FCI	
ltr	ecn no.	dr	date	linear		.XX±.01/0.X±0.3		COPY		www.fciconnect.com	
N						.XXX±.005/0.XX±0.13		projection		title IP + 24S + IP	
						.XXX±.0005/0.XXX±.051				Right Angle Solder Header	
				angles		0°±2°		INCH/MM		product family PWRBLADE	
				dr	C. BAROT	01-12-99		scale		size	
				enr	J. BROWN	01-12-99		1:1		dwg no	
				chr	J. BROWN	01-12-99				51415	
				appd	J. BROWN	01-12-99				code	
sheet index		revision sheet								213	
										sheet	
										4 of 5	



1 | 2

3 |

4

PRODUCT NUMBER
51415-00X__

NOTES:

1. DIMENSIONS AND TOLERANCES ARE IN ACCORDANCE WITH ASME Y14.5M, 1994 UNLESS OTHERWISE SPECIFIED.

CONNECTOR NOTES:

2. HOUSING MATERIAL: UL 94 V-0 GLASS FILLED HIGH-TEMP THERMOPLASTIC
POWER CONTACT MATERIAL: COPPER ALLOY
SIGNAL PIN MATERIAL: COPPER ALLOY

3. SEE ITEM 1 & 2 IN PRINT 10064183 FOR PLATING SPEC OF 51415-00X AND 51415-00XLF RESPECTIVELY.

4. MANUFACTURER'S NAME, P/N, AND DATE CODE TO APPEAR ON THIS SURFACE.

5. PRODUCT SPECIFICATION GS-12-149.
APPLICATION SPECIFICATION BUS-20-067.

PCB NOTES:

6. ALL HOLE DIAMETERS ARE FINISHED HOLE SIZE.

7. MOUNTING HOLES, WHERE APPLICABLE, ARE UNPLATED.

8. $\varnothing .0453 \pm 0.0010$ [1.151 ± 0.025] DRILLED HOLES PLATED WITH .0003 [0.008] MIN SnPb OVER .001 [0.03] TO .003 [0.08] Cu PLATING TO ACHIEVE $\varnothing .040 \pm .003$ [1.02 $\pm .07$] HOLE.

9. "DIM XXX" TO BE DETERMINED BY THE CUSTOMER.

10. CONNECTOR KEEP-OUT ZONE.

11. A SYMBOL WILL BE NEXT TO ANY DIMENSION, VIEW, OR NOTE WHICH HAS BEEN MODIFIED WITH THE CURRENT DRAWING REVISION.

mat'l code				SEE NOTES		tolerances unless otherwise specified		CUSTOMER		FCI			
ltr	ecn no.	dr	date					COPY		www.fciconnect.com			
N				linear		.XX \pm .01/0.X \pm 0.3		projection		title IP + 24S + 1P			
						.XXX \pm .005/0.XX \pm 0.13				Right Angle Solder Header			
				angles		.XXX \pm .0005/0.XXX \pm .051				product family PWRBLADE			
						0° \pm 2°		INCH/MM		code 213			
				dr	C. BAROT	01-12-99		scale		size A			
				enrg	J. BROWN	01-12-99				dwg no 51415			
				chr	J. BROWN	01-12-99				sheet 5 of 5			
				appd	J. BROWN	01-12-99							
sheet index		revision sheet											

B

B

1 | 2

Pro/E

PDM: Rev: N

STATUS: Released

Printed: Dec 20, 2010

Mouser Electronics

Authorized Distributor

Click to View Pricing, Inventory, Delivery & Lifecycle Information:

[FCI / Amphenol:](#)

[51425-001LF](#) [51425-002LF](#) [51820-10800000ABLF](#) [51415-001](#) [51820-001LF](#)