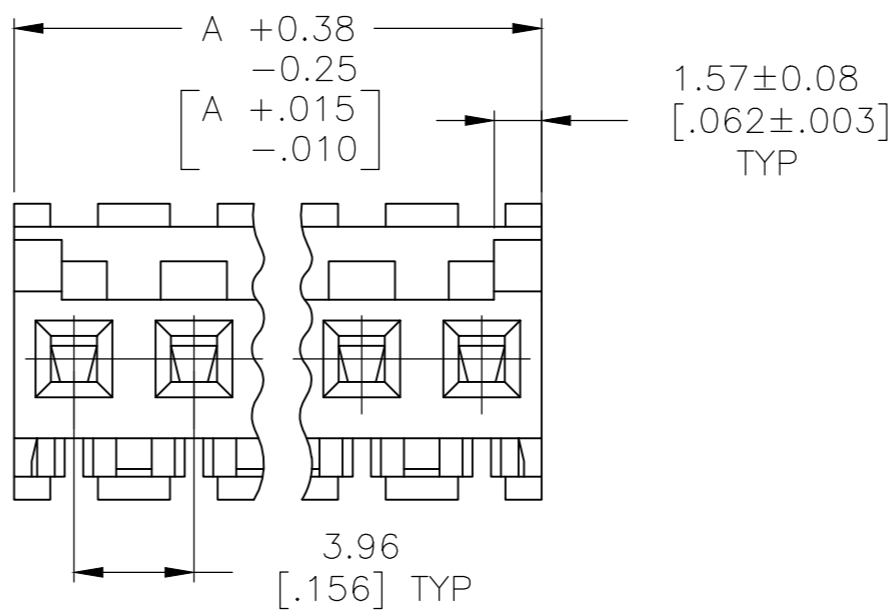
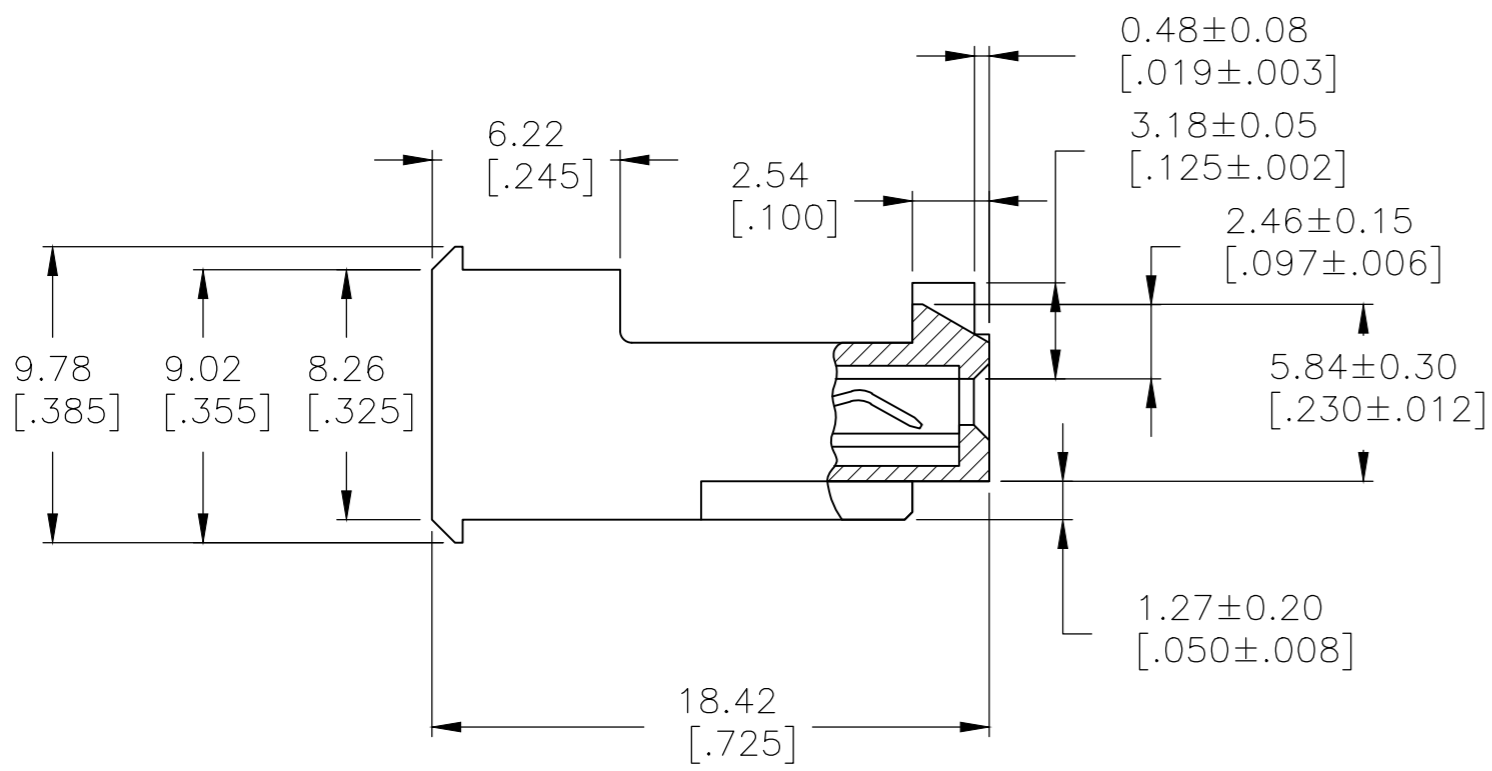
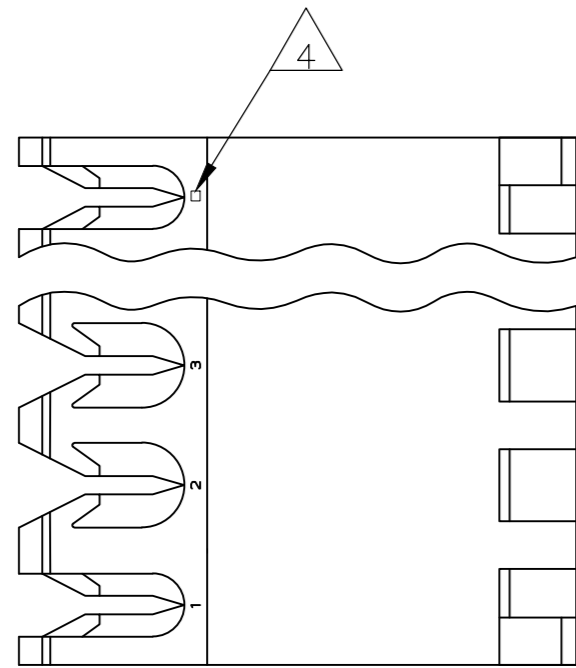


THIS DRAWING IS UNPUBLISHED. RELEASED FOR PUBLICATION
 © COPYRIGHT - By - TE CONNECTIVITY ALL RIGHTS RESERVED.

LOC	DIST	REVISIONS					
CM	00	P	LTR	DESCRIPTION	DATE	DWN	APVD
		E1		ECO-14-012257	04NOV2014	KR	OC



1 MATERIAL: CONNECTOR - NYLON UL94V-2 (ORANGE).
 CONTACTS - 0.30[.012] THICK COPPER ALLOY
 (BRIGHT TIN-LEAD 0.00203[.000080] MIN. THICK
 FOR CONTACTS 644465-2 THRU 1-644465-4)
 (WHISKER MITIGATED TIN 0.00203[.000080] MIN
 THICKNESS OVER NICKEL UNDERPLATE FOR
 3-644465-2 THRU 4-644465-4).

2 CONTACTS ACCEPT 18 AWG WIRE WITH 2.41[.095] MAX INSULATION DIAMETER.
 3 CONTACTS MUST ACCEPT 1.14±0.03[.045±.001] SQUARE POST AND REMAIN LOCKED IN POSITION.

4 IDENTIFICATION NUMBER FOR LAST CIRCUIT MAY NOT APPEAR ON ALL ASSEMBLIES.

5 DIMENSIONS IN BRACKETS ARE IN INCHES.

6 HOUSING FEATURES ARE: FEED-THRU WITH LOCKING RAMP AND POLARIZING TAB.

7 OBSOLETE PARTS: OBSOLETE CIS STREAMLINING PER D.RENAUD/D.SINISI

55.47[2.184]	14	4-644465-4		
51.51[2.028]	13	4-644465-3		
47.55[1.872]	12	4-644465-2		
43.59[1.716]	11	4-644465-1		
39.62[1.560]	10	4-644465-0		
35.66[1.404]	9	3-644465-9		
31.70[1.248]	8	3-644465-8		
27.74[1.092]	7	3-644465-7		
23.77[.936]	6	3-644465-6		
19.81[.780]	5	3-644465-5		
15.85[.624]	4	3-644465-4		
11.89[.468]	3	3-644465-3		
7.92[.312]	2	3-644465-2		
7	SUPERSEDED	55.47[2.184]	14	1-644465-4
7	SUPERSEDED	51.51[2.028]	13	1-644465-3
		47.55[1.872]	12	1-644465-2
		43.59[1.716]	11	1-644465-1
		39.62[1.560]	10	1-644465-0
		35.66[1.404]	9	644465-9
		31.70[1.248]	8	644465-8
		27.74[1.092]	7	644465-7
		23.77[.936]	6	644465-6
		19.81[.780]	5	644465-5
		15.85[.624]	4	644465-4
		11.89[.468]	3	644465-3
		7.92[.312]	2	644465-2
		DIM A	NO. OF CIRCUITS	PART NO.

METRIC

THIS DRAWING IS A CONTROLLED DOCUMENT.		DWN S. CARPENTER 14AUG2003		
DIMENSIONS: mm [INCHES]		CHK D. BOSSI 14AUG2003		
TOLERANCES UNLESS OTHERWISE SPECIFIED:		APVD D. BOSSI 14AUG2003	NAME MTA 156 CONNECTOR ASSEMBLY, 18 AWG, STANDARD	
0 PLC ± -		PRODUCT SPEC 108-1051	SIZE A2	
1 PLC ± -		APPLICATION SPEC 114-1020	CAGE CODE 00779	DRAWING NO C-644465
2 PLC ± -		WEIGHT -	RESTRICTED TO -	
3 PLC ± 0.13 [.005]		CUSTOMER DRAWING	SCALE 4:1	SHEET 1 OF 1
4 PLC ± -			REV E1	
ANGLES ± -				
FINISH 1				

Mouser Electronics

Authorized Distributor

Click to View Pricing, Inventory, Delivery & Lifecycle Information:

[TE Connectivity:](#)

[4-644465-0](#)