

spec ref		*		dr		Julia Wang		2006/09/20		<div>Amphenol Power Solutions</div>				<div>MM</div>		scale		size					
tolerance std		TOLERANCES UNLESS OTHERWISE SPECIFIED				eng		Huo-Rong Dai						2021/08/31		ecn no				ELX-DG-42194-1		A4	
ASME Y14.5						rvwr		-						-		rel level				Released			
				appr		Zheng, Pei-Min		2021/09/01		A Division of Amphenol Corporation				amphenol-icc.com									
<div>surface</div> <div>✓</div> <div>ASME Y14.5</div>		<div>linear</div>		0.X		±0.5		<div>projection</div> <div></div>		<div>title</div> <div>R/A HEADER WITH GUIDE PIN</div> <div>SIGNAL / POWER</div>		<div>dwg no</div> <div>51721</div>		<div>cat. no.</div> <div>51721</div>		<div>rev</div> <div>R</div>							
				0.XX		±0.25																	
				0.XXX		±0.100																	
		<div>angular</div>		0°		±2°				product family		PwrBlade		Product - Customer Drw				sheet 1 of 3					

Creo File:APH-PWR-AAC;REV B;2021-09-07

PRODUCT NUMBER		DIM		LENGTH FORMULAS (SEE NOTE 10)	
51721-A00CCDDEF--		DIM "A"		$2.54 \times (CCC/4) + 6.35 \times DD + 16.51$ (NOTE 10)	
SEE NOTE 1		DIM "B"		$2.54 \times (CCC/4) + 6.35 \times DD + 8.89$	
		DIM "C"		$2.54 \times (CCC/4) + 6.35 \times DD + 7.62$	
		DIM "E"		$2.54 \times (CCC/4) + 11.43$	
		DIM "F"		$2.54 \times (CCC/4) + 6.35 \times DD + 17.27$	
		DIM "H"		$2.54 \times (CCC/4) + 6.35$	

CONNECTOR NOTES

①. PRODUCT NUMBER CODE:
51721 - A 00 CCC DD E F LF
NO THIS SUFFIX: 100u"/2.54um SnPb ON PCB INTERFACE
ADD THIS SUFFIX: 78u"/2.00um Sn ON PCB INTERFACE
RETENTION TO PCB (NOTE 8)
TAIL OPTIONS (NOTE 7)
NUMBER OF RIGHT END POWER CONTACTS (NOTE 6)
NUMBER OF SIGNAL CONTACTS (NOTE 5)
ALWAYS '00' (ZERO, ZERO) (NOTE 4)
PLATING (NOTE 3)
BASE NUMBER

②. HOUSING MATERIAL: GLASS FILLED V-O HIGH TEMP THERMO PLASTIC.
SIGNAL CONTACT MATERIAL: COPPER ALLOY
POWER CONTACT MATERIAL: COPPER ALLOY

③. PLATING OPTION:
I = SEE PRINT 10064183 FOR PLATING SPEC OF 51721-100CCDDEF; 51721-100CCDDEFLF

④. THIS PART IS NOT AVAILABLE WITH LEFT SIDE POWER CONTACTS.

⑤. SIGNAL CONTACTS, 004 TO 148 AVAILABLE.

⑥. RIGHT END POWER CONTACTS, 01 TO 20 AVAILABLE.
MAXIMUM OF 20 POWER CONTACTS PER CONNECTOR.

⑦. TAIL OPTIONS:
A = 3.43 SOLDER TO BOARD
B = 4.19 SOLDER TO BOARD
C = 3.43 PRESS FIT
D = 2.34 SOLDER TO BOARD

⑧. RETENTION TO PCB OPTIONS:
A = BOARD LOCK (REQUIRES 2.49 +0.05, -0.03 THRU HOLE IN PCB).
MOUNTING FOOT THICKNESS 5.59
B = 3.81 THRU HOLE (REQUIRES 4.01 ± 0.07 THRU HOLE IN PCB).
MOUNTING FOOT THICKNESS 4.06
MOUNTING HOLES, WHERE APPLICABLE, ARE UNPLATED.

⑨. MANUFACTURE'S NAME, P/N, AND DATE CODE
TO APPEAR ON THIS SURFACE.

⑩. THE MAXIMUM OVERALL LENGTH (DIM A) OF A PART
IS 203.2

11. PRODUCT SPECIFICATION GS-12-149
APPLICATION SPECIFICATION BUS-20-067

12. REFERENCE 51697 FOR SELECT LOAD/FMLB WORKSHEET

PCB NOTES:

13. ALL DIMENSIONS ARE BASIC UNLESS OTHERWISE SPECIFIED.

14. ALL THROUGH HOLES ARE LOCATED WITH A
TRUE POSITION OF 0.10

15. ALL HOLE DIAMETERS ARE FINISHED HOLE SIZE.

⑪. Ø 1.151 ± 0.025 DRILLED HOLES PLATED WITH
0.008 MIN SnPb OR Sn OVER 0.03 TO 0.08
Cu PLATING TO ACHIEVE A 1.02 ± 0.07 HOLE.

17. A ⚠ SYMBOL WILL BE NEXT TO ANY DIMENSION, VIEW, OR
NOTE WHICH HAS BEEN MODIFIED WITH THE CURRENT
DRAWING REVISION.

⑫. CONNECTOR KEEP OUT ZONE

THROUGH HOLE
2x IF SELECTED
(SEE NOTE 8.B)

⚠ SCREW THROUGH HOLE FOR NOTE 8.B

spec ref		*		dr		Julia Wang		2006/09/20	
tolerance std		TOLERANCES UNLESS OTHERWISE SPECIFIED		eng		Huo-Rong Dai		2021/08/31	
ASME Y14.5				rvwr		-		-	
				appr		Zheng, Pei-Min		2021/09/01	
surface		linear		0.X		±0.5		projection	
				0.XX		±0.25		title	
				0.XXX		±0.100		R/A HEADER WITH GUIDE PIN	
ASME Y14.5		angular		0°		±2°		SIGNAL / POWER	
								product family	
								PwrBlade	
								Product - Customer Drw	
								sheet 2 of 3	

Amphenol
Power Solutions

A Division of Amphenol Corporation amphenol-icc.com

MM
scale 1:1
size A4

ecn no ELX-DG-42194-1

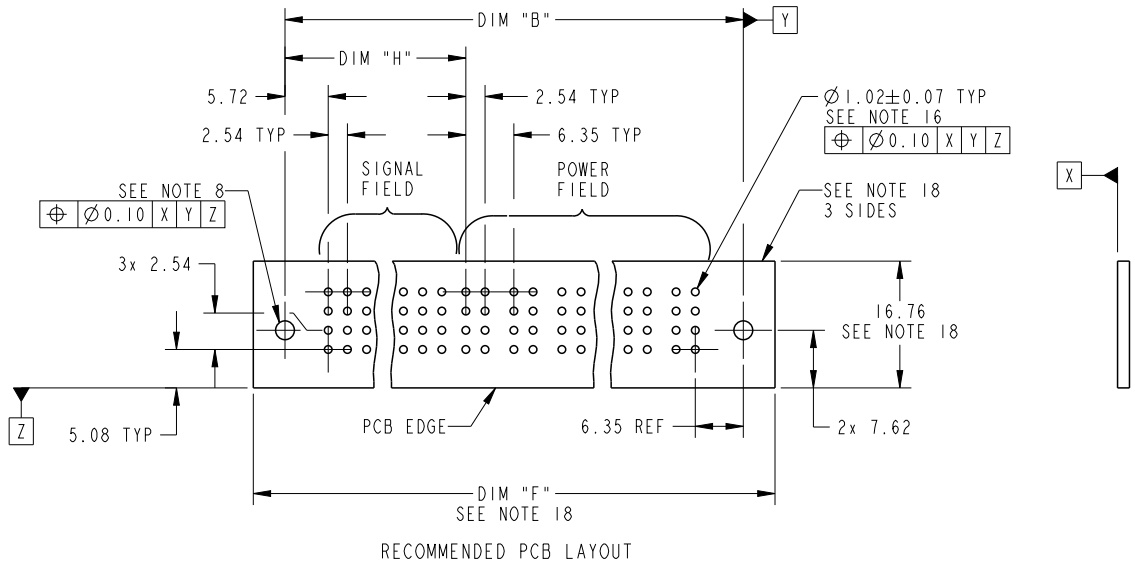
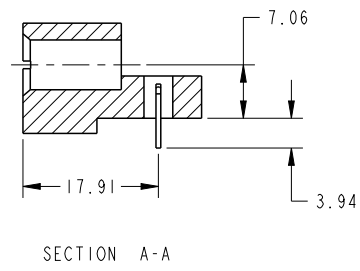
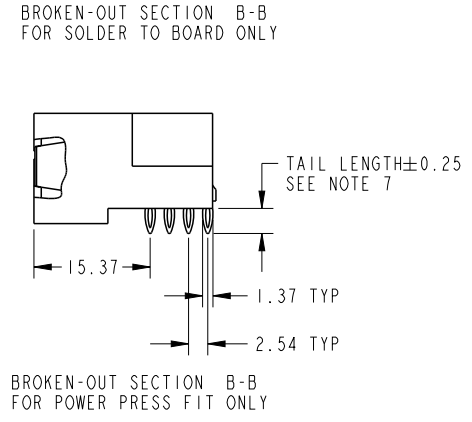
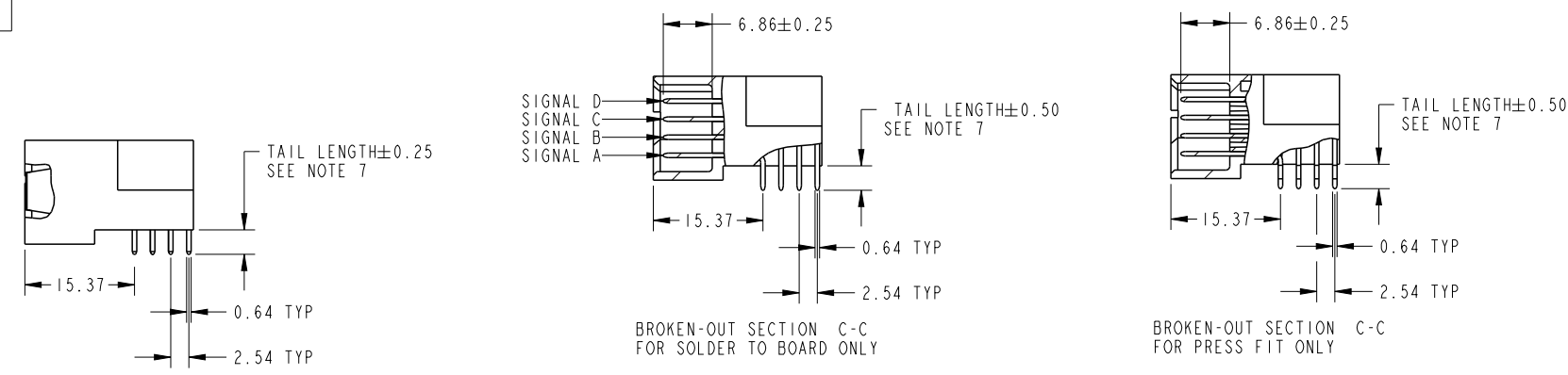
rel level Released

diag no 51721

cat. no. 51721

rev R

PRODUCT NUMBER
51721-A00CCDDEF_
SEE NOTE 1



dr	Julia Wang	2006/09/20	Amphenol Power Solutions		MM	scale	size
eng	Huo-Rong Dai	2021/08/31			1:1		A4
rvwr	-	-			ecn no	ELX-DG-42194-1	
appr	Zheng, Pei-Min	2021/09/01	A Division of Amphenol Corporation amphenol-icc.com		rel level	Released	
projection 		title R/A HEADER WITH GUIDE PIN SIGNAL / POWER		dwg no	51721		rev
				cat. no.	51721		R
product family		PwrBlade	Product - Customer Drw			sheet 3 of 3	

Mouser Electronics

Authorized Distributor

Click to View Pricing, Inventory, Delivery & Lifecycle Information:

[FCI / Amphenol:](#)

[51721-10001614ABLF](#) [51721-10006017AALF](#) [51721-10002407AB](#) [51721-10001608AA](#) [51721-10006017AA](#) [51721-10002406AB](#) [51721-10000404AA](#)