

Pin strip - PST 1,3/ 4-5,0 - 1933202

Please be informed that the data shown in this PDF Document is generated from our Online Catalog. Please find the complete data in the user's documentation. Our General Terms of Use for Downloads are valid (<http://phoenixcontact.com/download>)

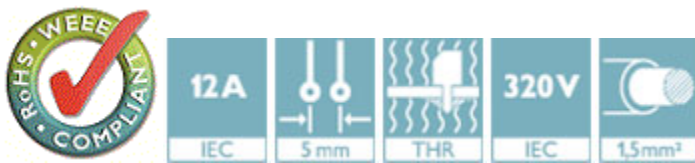
Header, Nominal current: 12 A, Rated voltage (III/2): 320 V, Number of positions: 4, Pitch: 5 mm, Color: black, Contact surface: Tin, Mounting: THR soldering, The maximum current depends on the plug used. The lower of the two current values apply for plug and pin strip. The pin strip is made of highly temperature resistant plastic and is thus suitable for the reflow process.



The figure shows a 10-position version of the product

Why buy this product

- Various pin lengths and pin geometries available on request
- Optimum pin geometry so as to not damage the plug
- Reflow solderable pin strip, optimized for COMBICON compact connectors



Key Commercial Data

| | |
|--------------------------------------|----------|
| Packing unit | 1 STK |
| Minimum order quantity | 250 STK |
| Weight per Piece (excluding packing) | 0.816 g |
| Custom tariff number | 85366990 |
| Country of origin | Germany |

Technical data

Dimensions

| | |
|--------------------------|---------|
| Length | 2.8 mm |
| Pitch | 5.00 mm |
| Dimension a | 15 mm |
| Constructional height | 9.5 mm |
| Length of the solder pin | 3.5 mm |
| Pin dimensions | 1,3 mm |
| Hole diameter | 1.5 mm |

Pin strip - PST 1,3/ 4-5,0 - 1933202

Technical data

General

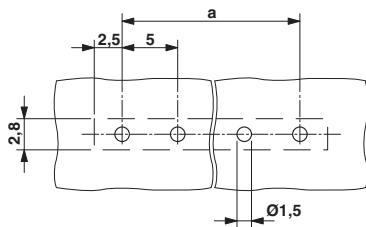
| | |
|--|---------------------------------|
| Range of articles | PST 1,3/...-V |
| Insulating material group | IIIa |
| Rated surge voltage (III/3) | 4 kV |
| Rated surge voltage (III/2) | 4 kV |
| Rated surge voltage (II/2) | 4 kV |
| Rated voltage (III/3) | 250 V |
| Rated voltage (III/2) | 320 V |
| Rated voltage (II/2) | 400 V |
| Connection in acc. with standard | EN-VDE |
| Nominal current I_N | 12 A (depends on the plug used) |
| Maximum load current | 12 A (depends on the plug used) |
| Insulating material | PA |
| Flammability rating according to UL 94 | V0 |
| Color | black |
| Number of positions | 4 |

Standards and Regulations

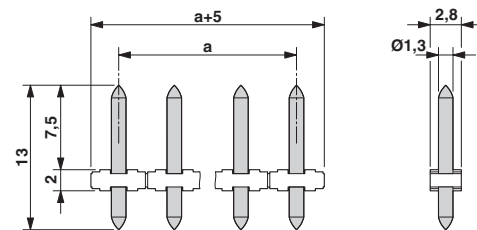
| | |
|--|--------|
| Connection in acc. with standard | EN-VDE |
| | CSA |
| Flammability rating according to UL 94 | V0 |

Drawings

Drilling diagram

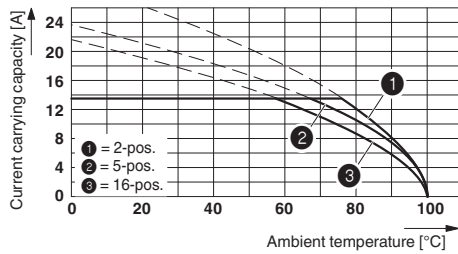


Dimensional drawing

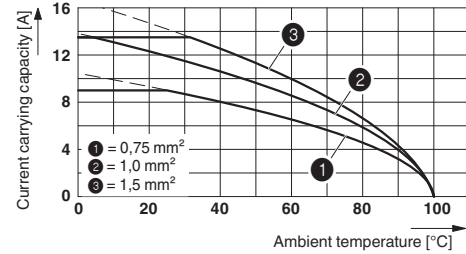


Pin strip - PST 1,3/ 4-5,0 - 1933202

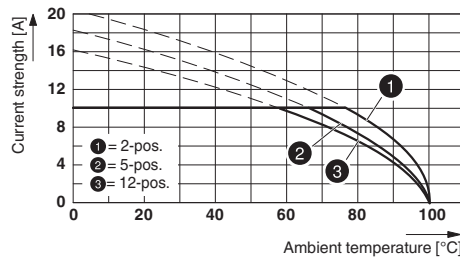
Diagram



Diagram



Diagram



Type: PTS 1,5/...-PH-5,0 with PST 1,3/...-5,0

Classifications

eCl@ss

| | |
|------------|----------|
| eCl@ss 4.0 | 272607xx |
| eCl@ss 4.1 | 27260701 |
| eCl@ss 5.0 | 27260701 |
| eCl@ss 5.1 | 27260701 |
| eCl@ss 6.0 | 27260704 |
| eCl@ss 7.0 | 27440402 |
| eCl@ss 8.0 | 27440402 |
| eCl@ss 9.0 | 27440402 |

ETIM

| | |
|----------|----------|
| ETIM 3.0 | EC001121 |
| ETIM 4.0 | EC002637 |
| ETIM 5.0 | EC002637 |

UNSPSC

| | |
|---------------|----------|
| UNSPSC 6.01 | 30211801 |
| UNSPSC 7.0901 | 39121432 |
| UNSPSC 11 | 34131203 |

Pin strip - PST 1,3/ 4-5,0 - 1933202

Classifications

UNSPSC

| | |
|--------------|----------|
| UNSPSC 12.01 | 39121432 |
| UNSPSC 13.2 | 39121432 |

Approvals

Approvals


Approvals


CSA / UL Recognized / SEV / cUL Recognized / EAC / VDE Gutachten mit Fertigungsüberwachung / IECCEB Scheme / CCA / EAC / cULus Recognized

Ex Approvals

Approvals submitted

Approval details

| | | | |
|---|--------------------------------|-------|-------|
| CSA  | | | |
| | B | D | |
| | Nominal current I _N | 5 A | 5 A |
| | Nominal voltage U _N | 300 V | 300 V |

| | | | |
|---|--------------------------------|-------|-------|
| UL Recognized  | | | |
| | B | D | |
| | Nominal current I _N | 16 A | 10 A |
| | Nominal voltage U _N | 300 V | 300 V |

| | | |
|-----|--------------------------------|-------|
| SEV | | |
| | Nominal current I _N | 10 A |
| | Nominal voltage U _N | 250 V |

Pin strip - PST 1,3/ 4-5,0 - 1933202

Approvals

| | | |
|--------------------|-------|-------|
| cUL Recognized | | |
| | B | D |
| Nominal current IN | 16 A | 10 A |
| Nominal voltage UN | 300 V | 300 V |

| |
|-----|
| EAC |
|-----|

| | |
|---|-------|
| VDE Gutachten mit Fertigungsüberwachung | |
| Nominal current IN | 10 A |
| Nominal voltage UN | 320 V |

| | |
|--------------------|-------|
| IECEE CB Scheme | |
| Nominal current IN | 10 A |
| Nominal voltage UN | 320 V |

| | |
|--------------------|-------|
| CCA | |
| Nominal current IN | 10 A |
| Nominal voltage UN | 250 V |

| |
|-----|
| EAC |
|-----|

| | |
|------------------|--|
| cULus Recognized | |
|------------------|--|

Accessories

Additional products

Pin strip - PST 1,3/ 4-5,0 - 1933202

Accessories

Plug - PTDA 2,5/ 4-PH-5,0 - 1725523



Plug component, Nominal current: 14 A, Rated voltage (III/2): 400 V, Number of positions: 4, Pitch: 5 mm, Connection method: Push-in spring connection, Color: green, Contact surface: Tin

PCB terminal block - PT 1,5/ 4-PH-5,0 - 1755606



Plug component, Nominal current: 10 A, Rated voltage (III/2): 400 V, Number of positions: 4, Pitch: 5 mm, Connection method: Screw connection with tension sleeve, Color: green, Contact surface: Tin

PCB terminal block - PT 1,5/ 4-PH-5,0 CLIP - 1755758



Plug component, Nominal current: 10 A, Rated voltage (III/2): 400 V, Number of positions: 4, Pitch: 5 mm, Connection method: Screw connection with tension sleeve, Color: green, Contact surface: Tin

PCB terminal block - PT 1,5/ 4-PVH-5,0 - 1934887



Plug component, Nominal current: 12 A, Rated voltage (III/2): 400 V, Number of positions: 4, Pitch: 5 mm, Connection method: Screw connection with wire protector, Color: green, Contact surface: Tin

Mouser Electronics

Authorized Distributor

Click to View Pricing, Inventory, Delivery & Lifecycle Information:

[Phoenix Contact:](#)

[1933202](#)