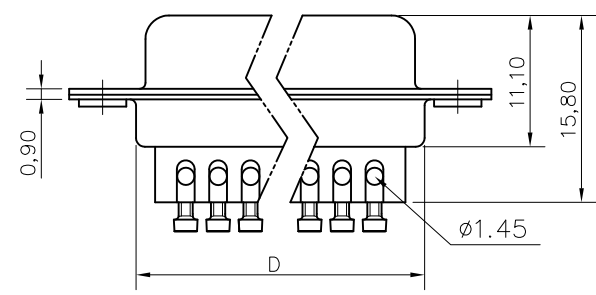
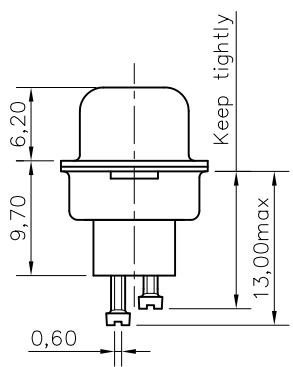
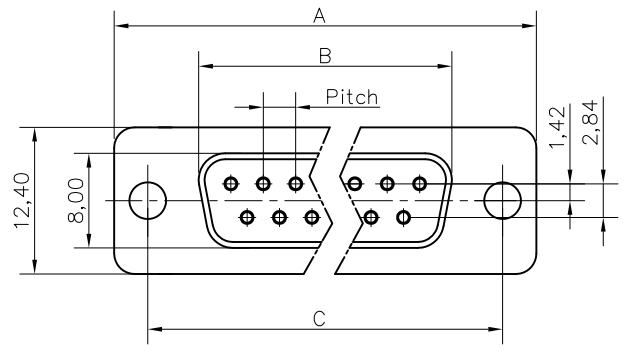


This document is the property of Amphenol Corporation and is delivered on the express condition that it is not to be disclosed, reproduced or used, in whole or in part, for manufacture or sale by anyone other than Amphenol Corporation without its prior consent, & that no right is granted to disclose or to use any information in this document.



# Customer drawing

DIM.S	A	B	C	D	Pitch
9	30.70	16.40	25.00	19.40	2.74
15	39.00	24.80	33.30	27.70	2.74
25	52.90	38.50	47.00	41.40	2.77
37	69.20	54.90	63.50	57.90	2.77

REVISIONS				
SYM	ECN	DESCRIPTION	DATE	APPROVED
1	HK--	First Release Drawing	12/10/07	IP
2	HK--	Update the Drawing	10/20/14	IP

## D-SUB TECHNICAL DATA

SHELL : Steel 2.5um(100u") min tin over 1.25um(50u") min nickel  
 BODY : Glass filled thermoplastic.  
 Flame retardant to UL94 V-0 Color Black

CONTACTS : Brass  
 0.1um(4u") min gold over 1.25um(50u") min nickel

SCREWLOCK : Copper alloy (no plating)

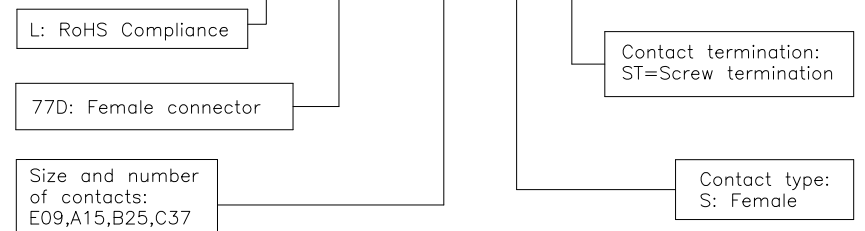
ELECTRICAL : Voltage rating : 300 V RMS at 50 Hz  
 Current rating 7.5A.  
 Insulation resistance >5000 M Ohms  
 Contact resistance 20 mOhms max.

CLIMATIC : Temperature range -55 °C up to 85°C, peak at 125°C  
 Damp heat 21 days(40 °C-95% HR)

MARKING : Amphenol...(Series No.)  
 Commercial reference  
 Manufacturing date

## PRODUCT CODE

# L 77D XXX S ST



UNLESS OTHERWISE SPECIFIED <b>TOLERANCES</b> U.S. METRIC .X +/- 0.50 .XX +/- 0.30 .XXX +/- 0.20 FRACTIONS +/- ANGLES +/- 2'	<b>APPROVAL</b> DRAWN <i>Phi.Liu</i> 10/20/14 CHECKED <i>Tony.Tang</i> 10/20/14 CHECKED	<b>DATE</b> 10/20/14	Amphenol Amphenol East Asia Limited <b>TITLE</b> Machined contacts, D-ST series <b>SIZE</b> DRAWING NO. <b>REV.</b> A4 L77DXSST 2 <b>SCALE</b> NONE <b>SHEET</b> 1 OF 1
	<b>DRAWING FILE :</b>		
	<b>ANGLE OF PROJECTION</b> 		
	<b>DIMENSIONS</b> U.S. INCHES METRIC MM		