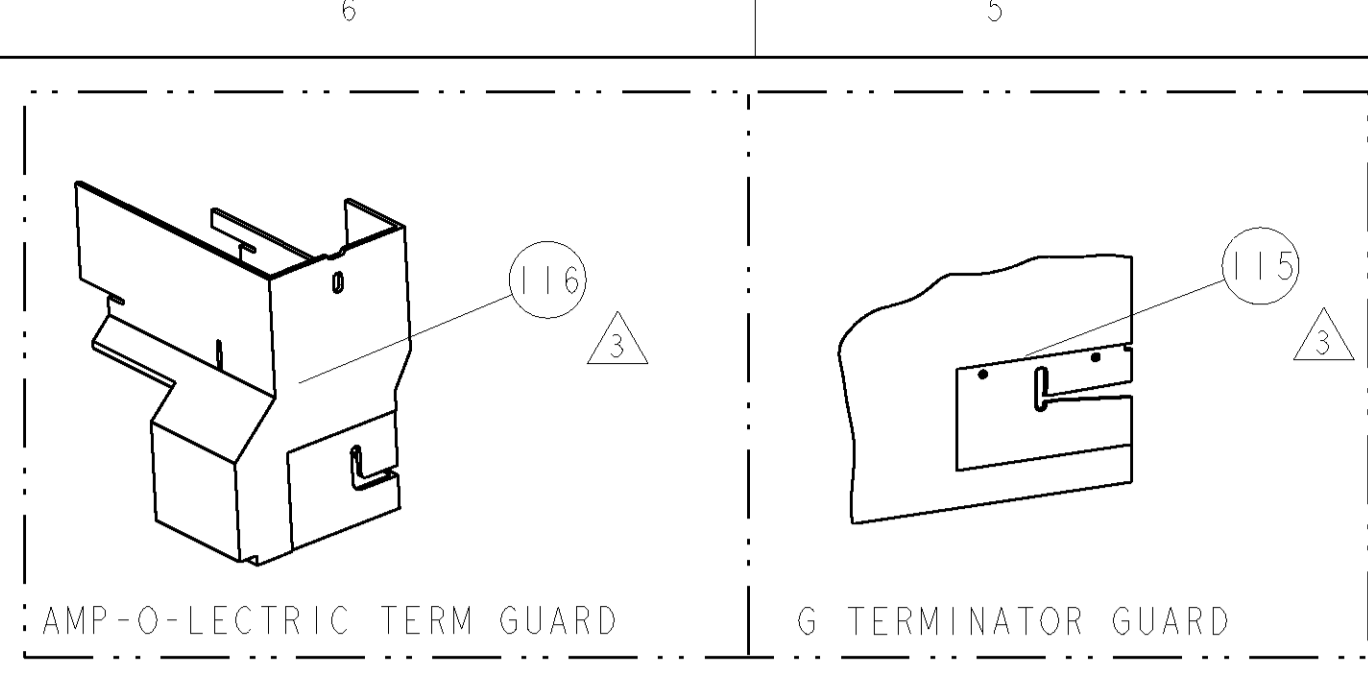


PART NUMBER	REV	FIRST USED	POWER UNIT	FEED TYPE	DESCRIPTION
1855300-1	A	122500-1	LEADMAKER	POST FEED	CUTS CARRIER
1855300-2	A	565435-5	BENCH MODEL K	PRE FEED	CUTS CARRIER
1855300-3	A	354500-1	BENCH MODEL G	PRE FEED	CUTS CARRIER
1855300-6	A	122500-1	LEADMAKER	POST FEED	CONTINUOUS CARRIER
7-1855300-7	A	-	-	-	SPARE PARTS

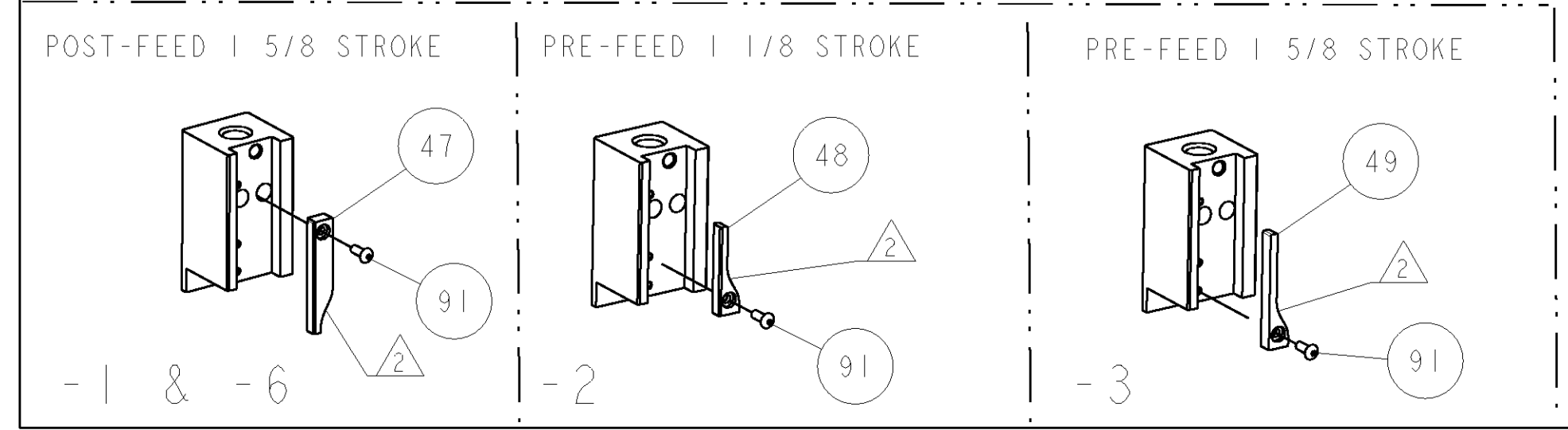
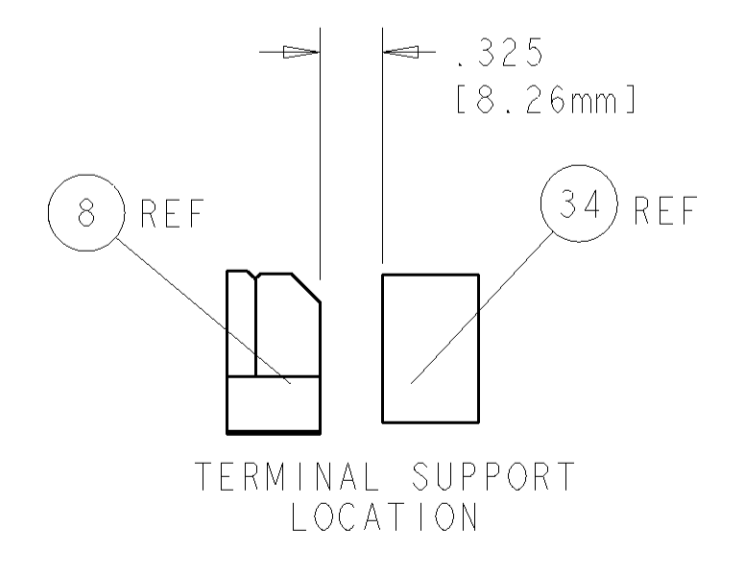
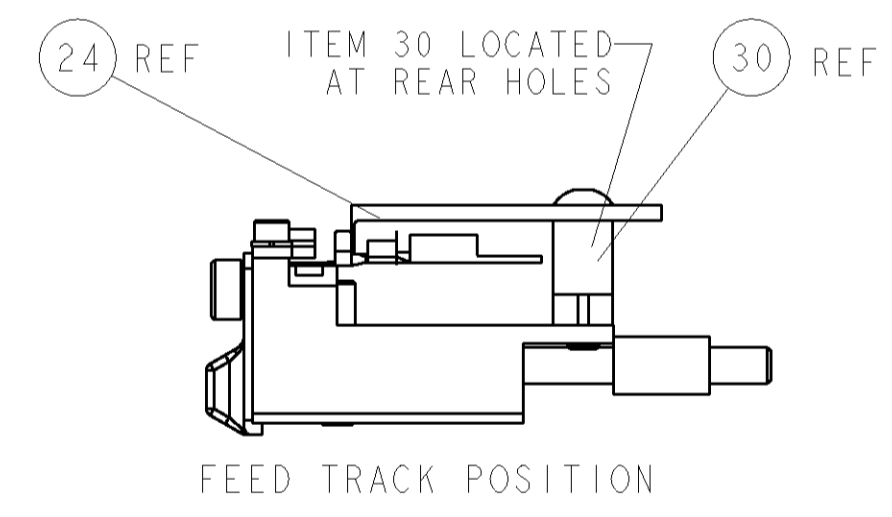
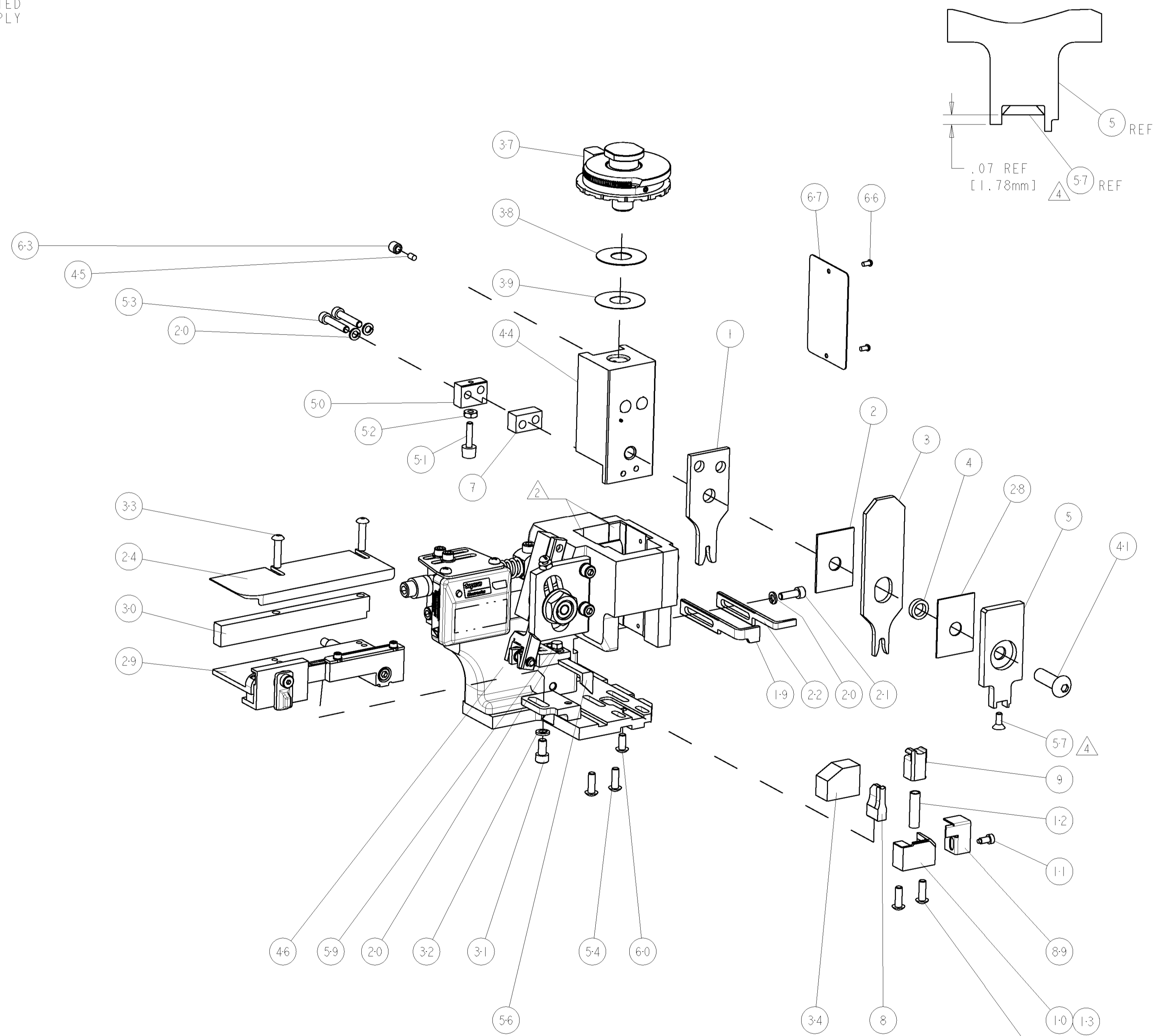


TERMINAL NAME: TERMINAL		PACKARD TERMINAL - PACKARD CRIMP SPECS		REF SETTING
TYCO PN	PACKARD PN	CRIMP HEIGHT	WIRE SIZE	
1949399	12177150	1.30±0.05mm [.051±.002]	0.8mm2	C9
-	-	1.25±0.05mm [.049±.002]	0.5mm2	D2
-	-	-	-	-
-	-	-	-	-
SEAL PN.	CRIMP	SIZE	TYPE	RANGE
1949140	15324973	WIRE 2.39mm [.094]	F	0.50-0.80mm2
-	-	INSUL 3.89mm [.153]	O	∅1.69-2.78mm
WIRE STRIP LENGTH	TERM APPL SPEC	FEED	APPLICATOR INSTRUCTIONS	SET UP GAGE
5.2-6.0mm	NONE	12.75mm	408-8040	458637-1

LOC	DIST	REV	DESCRIPTION	DATE	BY	APPD
A	66	A	RELEASED	27JUN2007	LG	GB

- △ RECOMMENDED SPARE PARTS
- △ GREASE LIGHTLY
- △ GUARD MUST BE IN PLACE WHEN OPERATING APPLICATOR IN A BENCH MACHINE
- △ APPLY TORQ-SEAL IN ALLEN SOCKET TO FILL HOLE AFTER FLAT HD HAS BEEN ADJUSTED TO CORRECT HEIGHT AT QUALIFICATION. APPLY PN 1-23419-5 LOC-TITE TO THREADS.

*** WARNING**
ON INSTALLATION, SET WIRE DISC TO LARGEST WIRE SIZE SETTING. USE OF SETTINGS BELOW MIN. REQUIRED CRIMP HEIGHT SETTING WILL CAUSE DAMAGE TO CRIMP TOOLING.



QTY	REF	DESCRIPTION	ITEM NO
1	REF	455749-1 GUARD WINDOW	116
1	REF	679532-1 INSERT, GUARD	115
1	1	1-21002-7 SCR, BTN SKT HD CAP 6-32 X .375	91
1	1	318563-1 GUARD, FRONT CHIP	89
1	1	4088040 SF APPL INST 408-8040	72
1	1	217238-1 GENERAL INSTRUCTION PKG	71
1	1	461264-5 PLATE, IDENTIFICATION	67
2	2	21017-2 SCREW, DRIVE	66
1	1	21009-2 SCR, SET, SELF LOCKING 1/4-20 X .250	63
1	1	22733-8 SCR, BHSC, SELF-LOCKING, 8-32 X .375	60
1	1	2-22603-0 SCR, HEX HD CAP 8-32 X .312	59
1	1	1-21003-9 SCR, FLT SKT HD CAP 6-32 X .375	57
1	1	458537-2 PAWL, FEED	56
4	4	2-21002-2 SCR, BTN SKT HD CAP 8-32 X .500	54
2	2	3-21000-0 SCR, SKT HD CAP 8-32 X .875	53
1	1	21018-5 NUT, HEX, REG 6-32	52
1	1	811242-2 BUMPER, HOLD DOWN	51
1	1	690753-1 SPACER, TONKER	50
1	1	690602-6 CAM, PRE FEED, 1/5/8	49
1	1	690602-5 CAM, PRE FEED, 1/1/8	48
1	1	690501-4 CAM, POST FEED, 1/5/8	47
1	1	459456-1 APPL. BASIC SUB ASSY (SIDE WISE MOCA)	46
1	1	690191-1 PLUG, NYLON	45
1	1	455673-1 RAM, SIDE FEED	44
1	1	7-21002-9 SCR, BTN SKT HD CAP 5/16-24 X 1.00	41
1	1	690125-1 SHIM SUB-ASSY	39
1	1	469367-9 SHIM	38
1	1	879103-2 FINE ADJUST HEAD ASSEMBLY	37
1	1	690786-5 TERMINAL SUPPORT	34
2	2	2-21002-4 SCR, BTN SKT HD CAP 8-32 X .750	33
1	1	21024-5 WASHER, SPRG LOCK, REG NO 10	32
1	1	3-21000-4 SCR, SKT HD CAP 10-32 X .375	31
1	1	1320908-6 SPACER, STRIP GUIDE	30
1	1	1633091-1 ASSEMBLY, STRIP GUIDE	29
1	1	455888-6 SPACER, CRIMPER	28
1	1	1320928-4 PLATE, STRIP GUIDE	24
1	1	690472-2 STRIPPER	22
1	1	2-21000-7 SCR, SKT HD CAP 8-32 X .500	21
4	4	21024-4 WASHER, SPRG LOCK, REG NO 8	20
1	1	691353-1 STRIPPER	19
1	1	679625-2 SHEAR HOLDER, FRONT (NO CUT)	13
1	1	3-22280-3 SPRING, COMPRESSION	12
1	1	690461-2 STOP, SHEAR	11
1	1	1-690459-0 SHEAR HOLDER, FRONT	10
1	1	318707-2 FLOATING SHEAR, FRONT	9
1	1	1-1633381-3 ANVIL, COMBINATION	8
1	1	5-240641-1 SPACER	7
1	1	-	6
1	1	318701-1 DEPRESSOR, SHEAR	5
1	1	238011-2 BLOCK, CRIMPER SPACER	4
1	1	9-1583690-6 CRIMPER, INSUL O	3
1	1	1-455888-0 SPACER, CRIMPER	2
1	1	4-1673600-3 CRIMPER, WIRE	1

INCHES	TOLERANCES UNLESS OTHERWISE SPECIFIED:	FINISH	WEIGHT	CUSTOMER DRAWING
0 PLC ±.01	1 PLC ±.01	2 PLC ±.01	3 PLC ±.001	4 PLC ±.0001
ANGLES ±.0001				
DIMENSIONS:		TOLERANCES UNLESS OTHERWISE SPECIFIED:		FINISH
INCHES		WEIGHT		CUSTOMER DRAWING

CUSTOMER VIEWABLE ASSEMBLY

Mouser Electronics

Authorized Distributor

Click to View Pricing, Inventory, Delivery & Lifecycle Information:

[TE Connectivity:](#)

[1855300-2](#)