

4

3

2

1


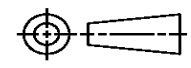
THIS DRAWING IS UNPUBLISHED. RELEASED FOR PUBLICATION
© COPYRIGHT ALL RIGHTS RESERVED.

LOC		DIST		REVISIONS			
P	LTR	DESCRIPTION		DATE	DWN	APVD	
	A1	ECR-14-018880		17DEC2014	GK	HMR	

REPLACED BY OCEAN STYLE APPLICATOR PART NUMBER 2266508-1

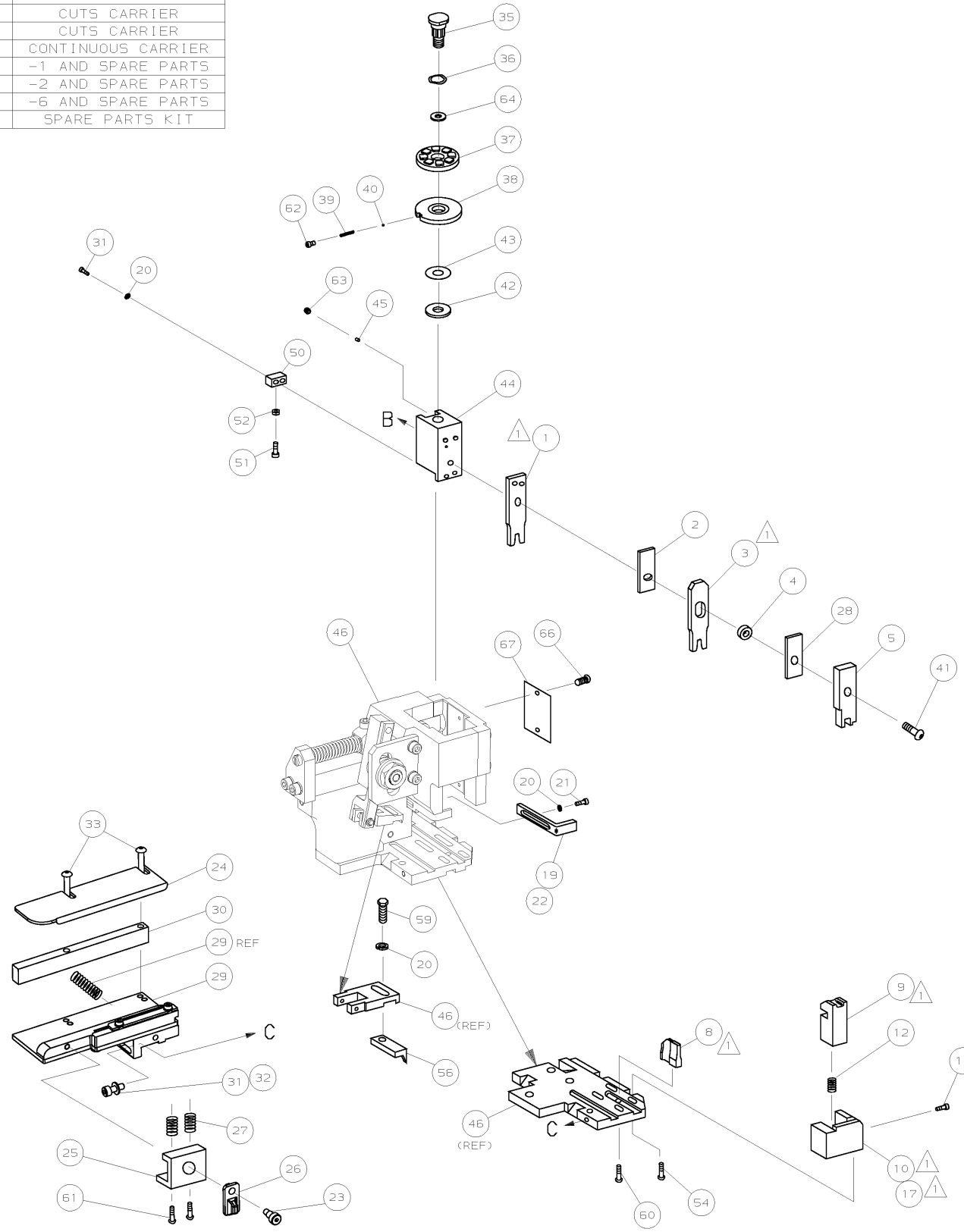
FOR REPLACEMENT PARTS FOR APPLICATOR 1426496
REFER TO ADDITIONAL PAGE(S). SPARE PARTS KIT (IF LISTED)
WILL REMAIN AVAILABLE.

THE REPLACEMENT OCEAN STYLE APPLICATOR HAS THE
SAME TERMINATOR/PRESS INTERFACE AS APPLICATOR
1426496

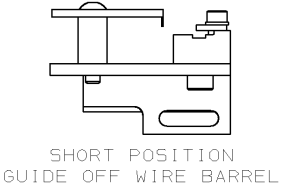
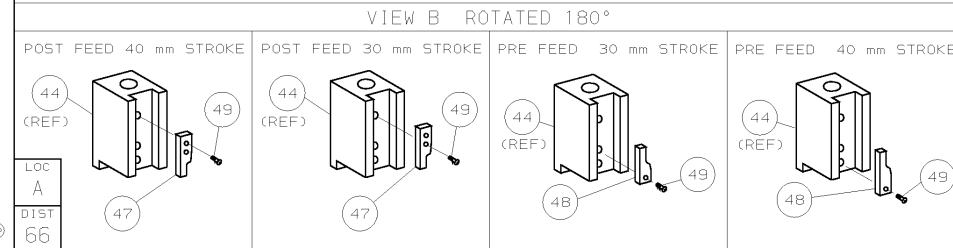
THIS DRAWING IS A CONTROLLED DOCUMENT.		DWN	GOPALAKRISHNA HV			TE Connectivity		
DIMENSIONS:		CHK	RAGHAVENDRA			NAME		
		TOLERANCES UNLESS OTHERWISE SPECIFIED:		APVD	RAGHAVENDRA			
		0 PLC	±	PRODUCT SPEC		APPLICATION SPEC		
MATERIAL		1 PLC	±	SIZE		CAGE CODE	DRAWING NO	RESTRICTED TO
FINISH		2 PLC	±	A 3			©- 1426496	
		3 PLC	±	WEIGHT				
		4 PLC	±	CUSTOMER DRAWING		SCALE	SHEET 1 OF 2	REV A1
		ANGLES	±					

PART NUMBER	REV	FIRST USED	TERMINATOR	FEED TYPE	DESCRIPTION
1426496-1	A	-	LEADMAKER	MECH POST FEED	CUTS CARRIER
1426496-2	A	-	BENCH	MECH PRE FEED	CUTS CARRIER
1426496-6	A	-	LEADMAKER	MECH POST FEED	CONTINUOUS CARRIER
7-1426496-1	A	-	LEADMAKER	MECH POST FEED	-1 AND SPARE PARTS
7-1426496-2	A	-	BENCH	MECH PRE FEED	-2 AND SPARE PARTS
7-1426496-6	A	-	LEADMAKER	MECH POST FEED	-6 AND SPARE PARTS
7-1426496-7	A	-	-	-	SPARE PARTS KIT

CRIMP DATA AMP TERMINAL AMP CRIMP SPECS			
TERMINAL NAME: RECEPTACLE, .093 DIAMETER, P.C. CONTACT			
CRIMP	SIZE	TYPE	RANGE
WIRE	1.78 [.070 IN]	F	22 - 18 AWG
INSUL	3.05 [.120 IN]	0V	1.52-2.79 [.060-.110 IN]
WIRE STRIP LENGTH		APPL INSTRUCTION	
3.17-3.95 [.125-.155 IN]		408-8322	
TERMINAL		FEED	
APPL SPEC 114-1008		10.29 [.405 IN]	
TERMINALS APPLIED			
61291	-	-	-
-	-	-	-
-	-	-	-
-	-	-	-
-	-	-	-
-	-	-	-
-	-	-	-
-	-	-	-
-	-	-	-
WIRE SIZE	CRIMP HEIGHT	PIN PN AND LENGTH [IN]	
mm ² AWG			
18 AWG	1.29 ±0.05 [.051 ±.002 IN]	2-354779-1 [.3095]	
20 AWG	1.17 ±0.05 [.046 ±.002 IN]	3-354779-2 [.3150]	
22 AWG	1.09 ±0.05 [.043 ±.002 IN]	4-354779-0 [.3190]	



- 1. RECOMMENDED SPARE PARTS.
- 2. GREASE RAM, CAM, CAM FOLLOWER AND FEED ROD LIGHTLY.
- 3. LUBRICATE DAILY PER THE APPLICATOR INSTRUCTION SHEET SUPPLIED WITH THE APPLICATOR.



QTY	REQD	PER	ASSY	PART NO	DESCRIPTION	ITEM NO			
-	1	1	1	1	1	1	1426496	PRINT, APPLICATOR LOG SHEET	73
-	1	1	1	1	1	1	1338705-1	DOCUMENTATION PACKAGE	72
-	1	1	1	1	1	1			71
-	1	1	1	1	1	1			70
-	1	1	1	1	1	1			69
-	1	1	1	1	1	1			68
-	1	1	1	1	1	1	461264-1	PLATE, IDENTIFICATION	67
-	2	2	2	2	2	2	21017-2	SCR,DRIVE(#2x.19) ID PLATE	66
-	1	1	1	1	1	1			65
-	1	1	1	1	1	1	986950-1	WASHER, FLAT PRECISION	64
-	1	1	1	1	1	1	3-18031-0	SCR,SKT SET(M6X6) RAM	63
-	1	1	1	1	1	1	18023-9	SCR,SHC(M4X6) IN5 DISC	62
-	2	2	2	2	2	2	1-18024-5	SCR,BHC(M5X25) DRAG	61
-	1	1	1	1	1	1	18024-7	SCR,BHC(M4X10) ANVIL	60
-	1	1	1	1	1	1	5-18022-2	SCR,HEX(M4X8) FEED FINGER	59
-	1	1	1	1	1	1			58
-	1	1	1	1	1	1			57
-	1	1	1	1	1	1	1338685-1	PAWL, FEED	56
-	1	1	1	1	1	1			55
-	2	2	2	2	2	2	18024-8	SCR,BHC(M4X12) SHEAR HOLDER	54
-	1	1	1	1	1	1			53
-	1	1	1	1	1	1	18030-1	NUT,HEX(M3)HOLD DOWN	52
-	1	1	1	1	1	1	811242-5	BUMPER, HOLDDOWN	51
-	1	1	1	1	1	1	690753-2	SPACER, TONKER	50
-	1	1	1	1	1	1	18024-3	SCR,BHC(M3X10) CAM	49
-	1	1	1	1	1	1	1338675-1	CAM, PRE FEED 30 & 40 mm ST	48
-	1	1	1	1	1	1	1338676-1	CAM, POST FEED 30 & 40 mm ST	47
-	1	1	1	1	1	1	1320999-3	APPLICATOR BASIC SUBASSY	46
-	1	1	1	1	1	1	690191-1	PLUG, NYLON	45
-	1	1	1	1	1	1	1338660-1	RAM	44
-	1	1	1	1	1	1	690125-1	WASHER, LAMINATED	43
-	1	1	1	1	1	1	690124-1	WASHER, RAM	42
-	1	1	1	1	1	1	2-18024-6	SCR,BHC(M8X25) RAM	41
-	1	1	1	1	1	1	23241-1	BALL, STEEL	40
-	1	1	1	1	1	1	2-22278-7	SPRING, COMPRESSION	39
-	1	1	1	1	1	1	1320922-1	DISC, INSULATION	38
-	1	1	1	1	1	1	354777-1	WIRE DISC, PLASTIC	37
-	1	1	1	1	1	1	22480-5	WASHER, SPRING	36
-	1	1	1	1	1	1	690212-1	POST, RAM	35
-	1	1	1	1	1	1			34
-	2	2	2	2	2	2	1-18024-0	SCR,BHC(M4X20) STRIP GUIDE	33
-	1	1	1	1	1	1	18027-2	WASHER, FLAT(M4)	32
-	3	3	3	3	3	3	1-18023-2	SCR,SKT CAP(M4X12)MOUNT BLOCK	31
-	1	1	1	1	1	1	1320908-1	SPACER, STRIP GUIDE	30
-	1	1	1	1	1	1	1633073-1	STRIP GUIDE PLATE ASSY	29
-	1	1	1	1	1	1	1-455888-6	SPACER, FRONT SHEAR DEP	28
-	2	2	2	2	2	2	1-22284-0	SPRING, DRAG	27
-	1	1	1	1	1	1	356835-1	LEVER, DRAG RELEASE	26
-	1	1	1	1	1	1	240792-1	DRAG, TERMINAL	25
-	1	1	1	1	1	1	1320928-1	PLATE, STRIP GUIDE	24
-	1	1	1	1	1	1	980371-4	SCR,SHC SHLD	23
-	1	1	1	1	1	1	690472-2	STRIPPER	22
-	1	1	1	1	1	1	1-18023-1	SCR,SHC(M4X10) STRIPPER	21
-	4	4	4	4	4	4	18025-2	WASHER,LOCK(M4) STRIPPER	20
-	1	1	1	1	1	1	690472-1	STRIPPER	19
-	1	1	1	1	1	1			18
-	1	1	1	1	1	1	1338684-1	HOLDER, SHEAR, FRONT (NO-CUT)	17
-	1	1	1	1	1	1			16
-	1	1	1	1	1	1			15
-	1	1	1	1	1	1			14
-	1	1	1	1	1	1			13
-	1	1	1	1	1	1	5-22280-0	SPRING, SHEAR	12
-	1	1	1	1	1	1	356885-4	STOP, SHEAR	11
-	1	1	1	1	1	1	1320921-1	HOLDER, SHEAR, FRONT (CUT)	10
-	1	1	1	1	1	1	454276-1	SHEAR, FLOAT (FRONT)	9
-	1	2	2	2	1	1	6-1333203-4	ANVIL	8
-	1	1	1	1	1	1			7
-	1	1	1	1	1	1			6
-	1	1	1	1	1	1	1-455889-4	DEPRESSOR, SHEAR (FRONT)	5
-	1	1	1	1	1	1	238011-4	SPACER, BLOCK CRIMPER	4
-	1	2	2	1	1	1	4-854830-5	CRIMPER, INSULATION	3
-	1	1	1	1	1	1	455888-2	SPACER, CRIMPER	2
-	1	2	2	2	1	1	1-456404-8	CRIMPER, WIRE	1

QTY	REQD	PER	ASSY	PARTS LIST	DESCRIPTION	ITEM NO																																																																																																																																													
-	77	-	76	-	72	-	71	-	70	-	69	-	68	-	67	-	66	-	65	-	64	-	63	-	62	-	61	-	60	-	59	-	58	-	57	-	56	-	55	-	54	-	53	-	52	-	51	-	50	-	49	-	48	-	47	-	46	-	45	-	44	-	43	-	42	-	41	-	40	-	39	-	38	-	37	-	36	-	35	-	34	-	33	-	32	-	31	-	30	-	29	-	28	-	27	-	26	-	25	-	24	-	23	-	22	-	21	-	20	-	19	-	18	-	17	-	16	-	15	-	14	-	13	-	12	-	11	-	10	-	9	-	8	-	7	-	6	-	5	-	4	-	3	-	2	-	1

Mouser Electronics

Authorized Distributor

Click to View Pricing, Inventory, Delivery & Lifecycle Information:

[TE Connectivity:](#)

[1426496-6](#)