

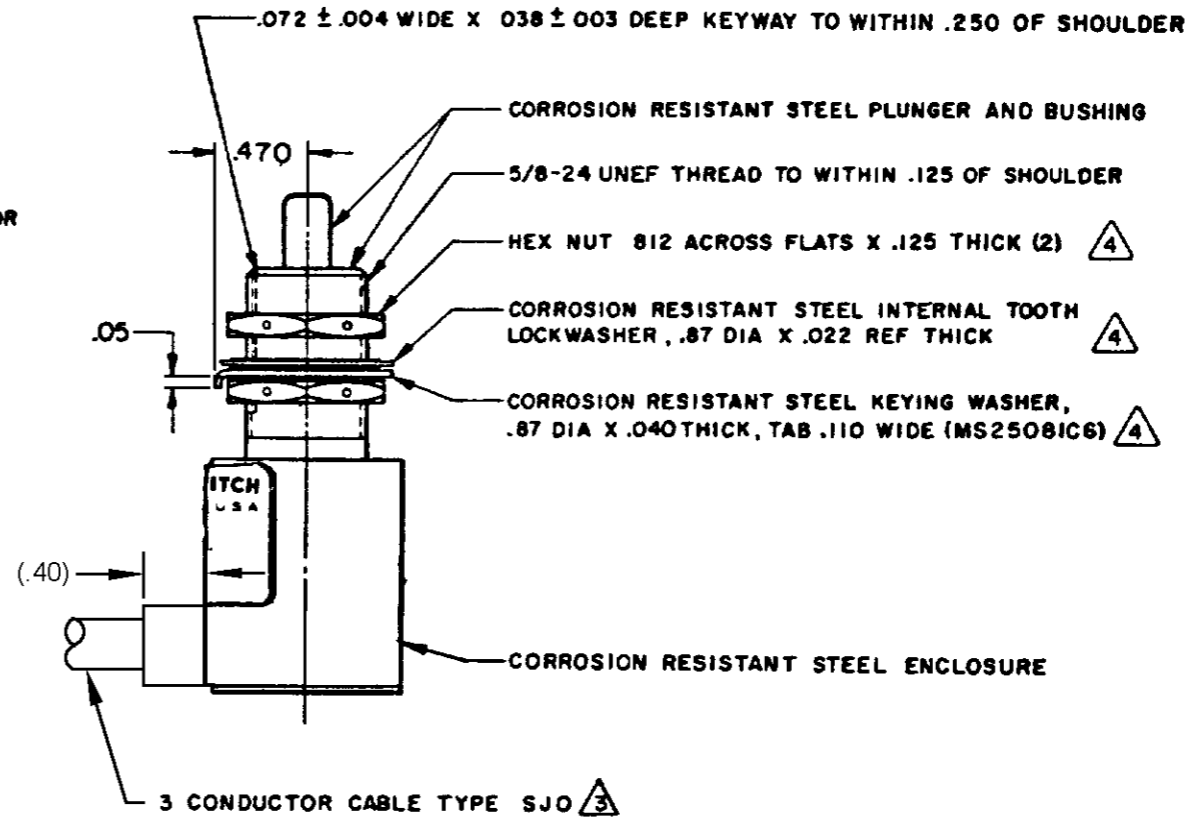
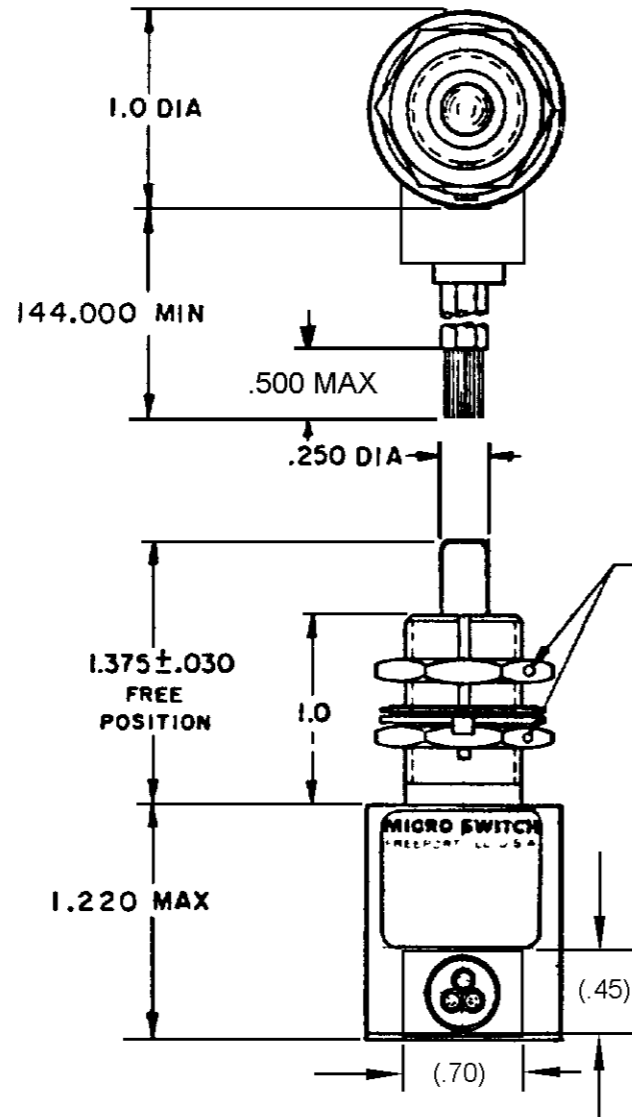
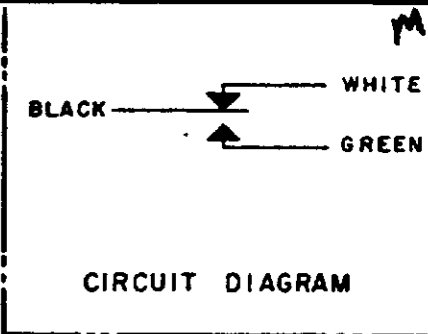
MICRO SWITCH

FREEPORT ILLINOIS U.S.A.
A DIVISION OF HONEYWELL

FED. MFG. CODE 91929

SWITCH-ENCLOSED

CATALOG LISTING
1CH28-12



M 1CH28-12
 DRAWING NUMBER
 ISSUE 6
 RJ 27OCT05
 CHECK 05APR05
 AK 14 MAR 89
 TSK
 WJM 13 MAR 89
 DRAWN
 RASTER
 FO-52851-B

REVISIONS

| | | | |
|---|---------|-------|-----------|
| A | PR17175 | WJM | 13 MAR 89 |
| B | C074101 | LJF | 2 FEB 93 |
| C | C0 | 7700A | 848 |
| D | 0012074 | KSR | 05 APR 05 |
| E | 0016449 | KSR | 27 OCT 05 |

THIS DRAWING COVERS A PROPRIETARY ITEM AND IS THE PROPERTY OF MICRO SWITCH A DIVISION OF MINNEAPOLIS-HONEYWELL REGULATOR CO. THIS DRAWING IS NOT TO BE COPIED OR USED WITHOUT THE APPROVAL OF MICRO SWITCH.

| CHARACTERISTICS | | ELECTRICAL DATA | | SCALE FULL |
|-----------------------|-----------|---------------------|--|----------------------------|
| OPERATING FORCE | 6 - 12 LB | CONTACT ARRANGEMENT | | DO NOT SCALE PRINT |
| FULL OVERTRAVEL FORCE | 30 LB MAX | S P D T | | UNLESS OTHERWISE SPECIFIED |
| RELEASE FORCE | 4 LB MIN | | | DIMENSIONS ARE IN INCHES |
| PRETRAVEL | .040 MAX | | | TOLERANCES ARE |
| DIFFERENTIAL TRAVEL | .020 MAX | | | ONE PLACE (.0) |
| OVERTRAVEL | .250 MIN | | | TWO PLACE (.00) |
| | | | | THREE PLACE (.000) |
| | | | | ANGLES 2 |
| | | | | WEIGHT 18 OZ MAX |

NOTES

- SWITCH SEALED PER MIL-PRF-8805 SYMBOL 3
 - CIRCUIT DIAGRAM, CATALOG LISTING AND DATE CODE ARE SHOWN ON NAMEPLATE
- WIRE LEADS COLOR CODED TO SHOW LEAD IDENTIFICATION
HARDWARE MAY BE PACKAGED UNASSEMBLED PER MIL-PRF-8805



Mouser Electronics

Authorized Distributor

Click to View Pricing, Inventory, Delivery & Lifecycle Information:

[Honeywell:](#)

[1CH28-12](#)