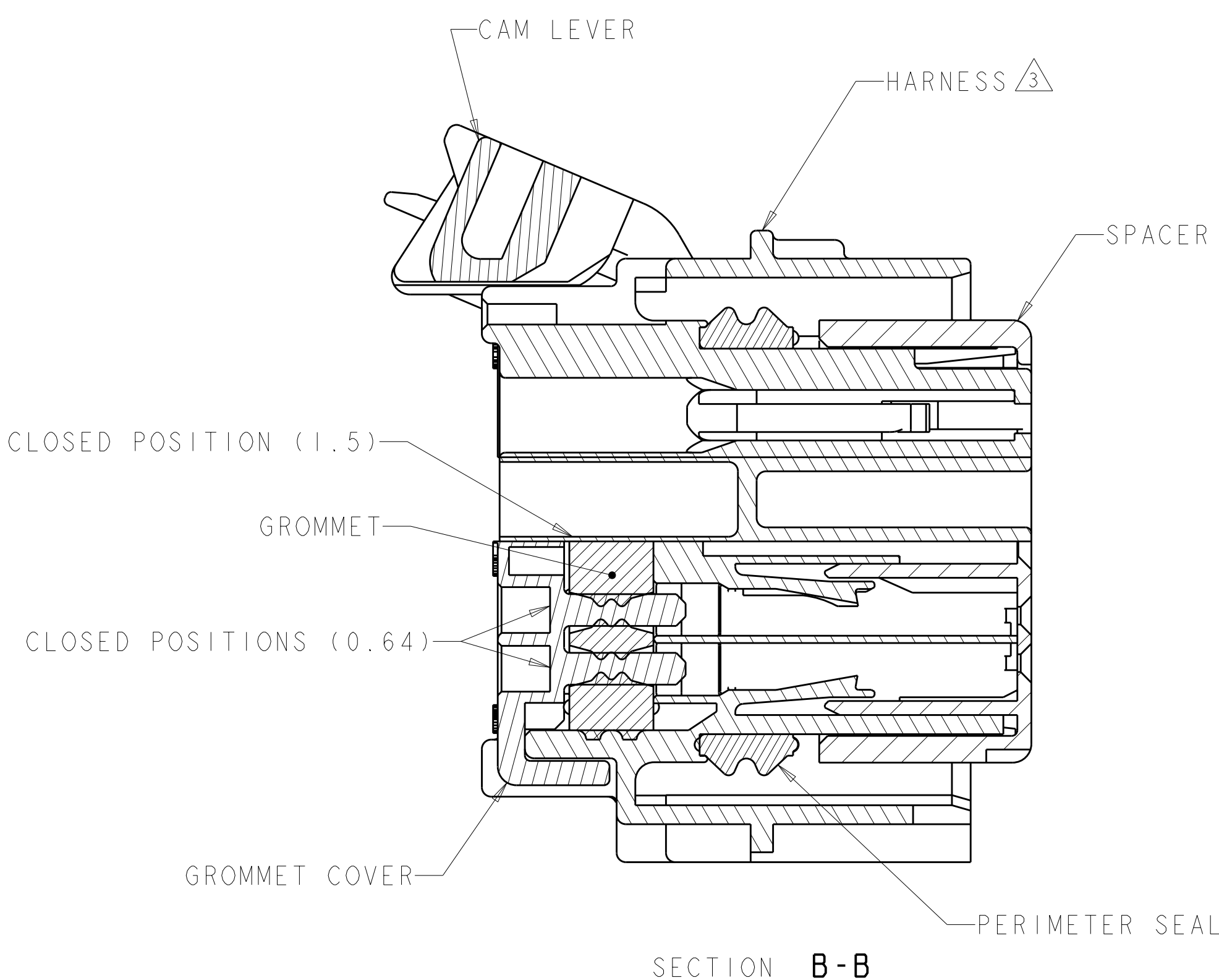
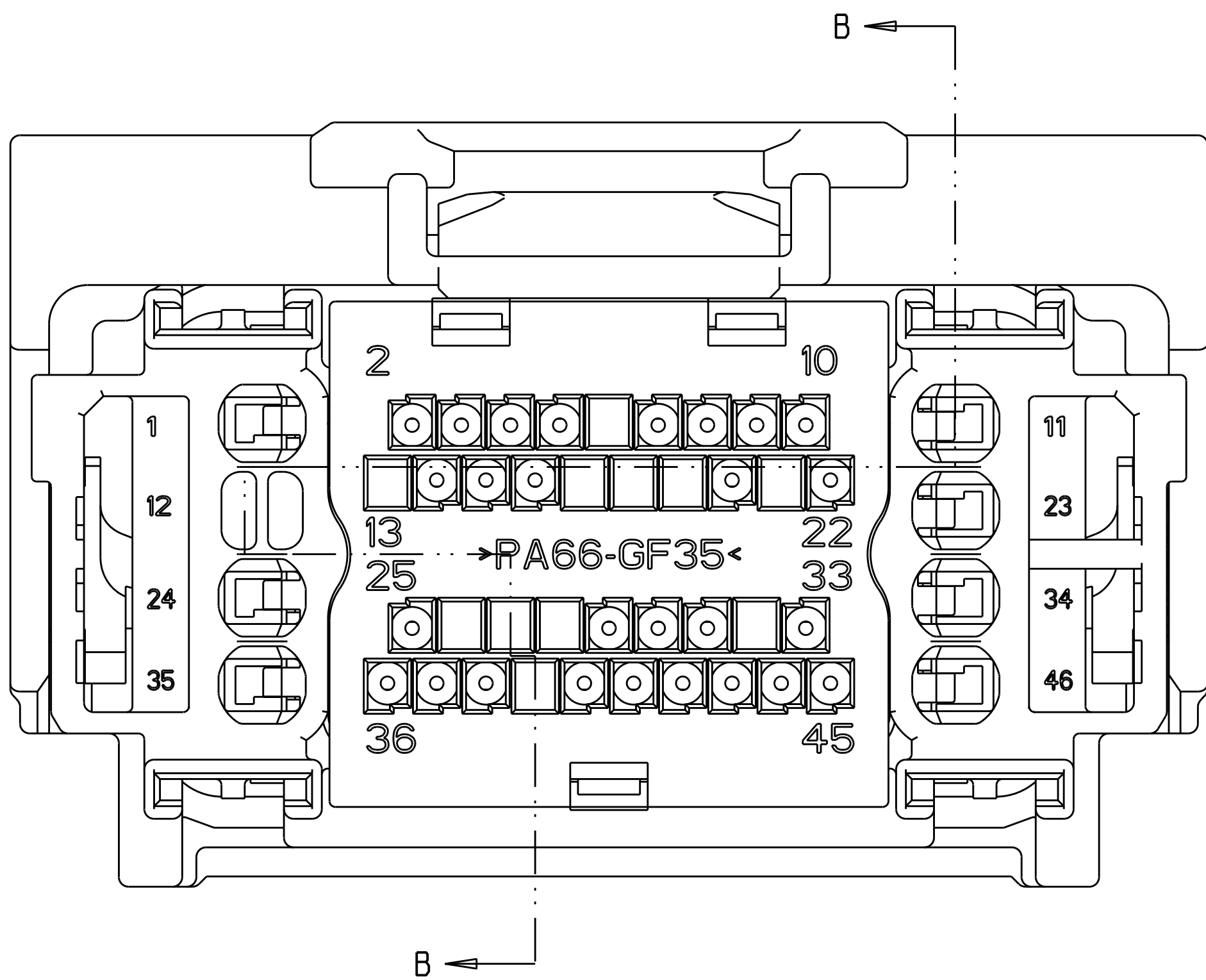
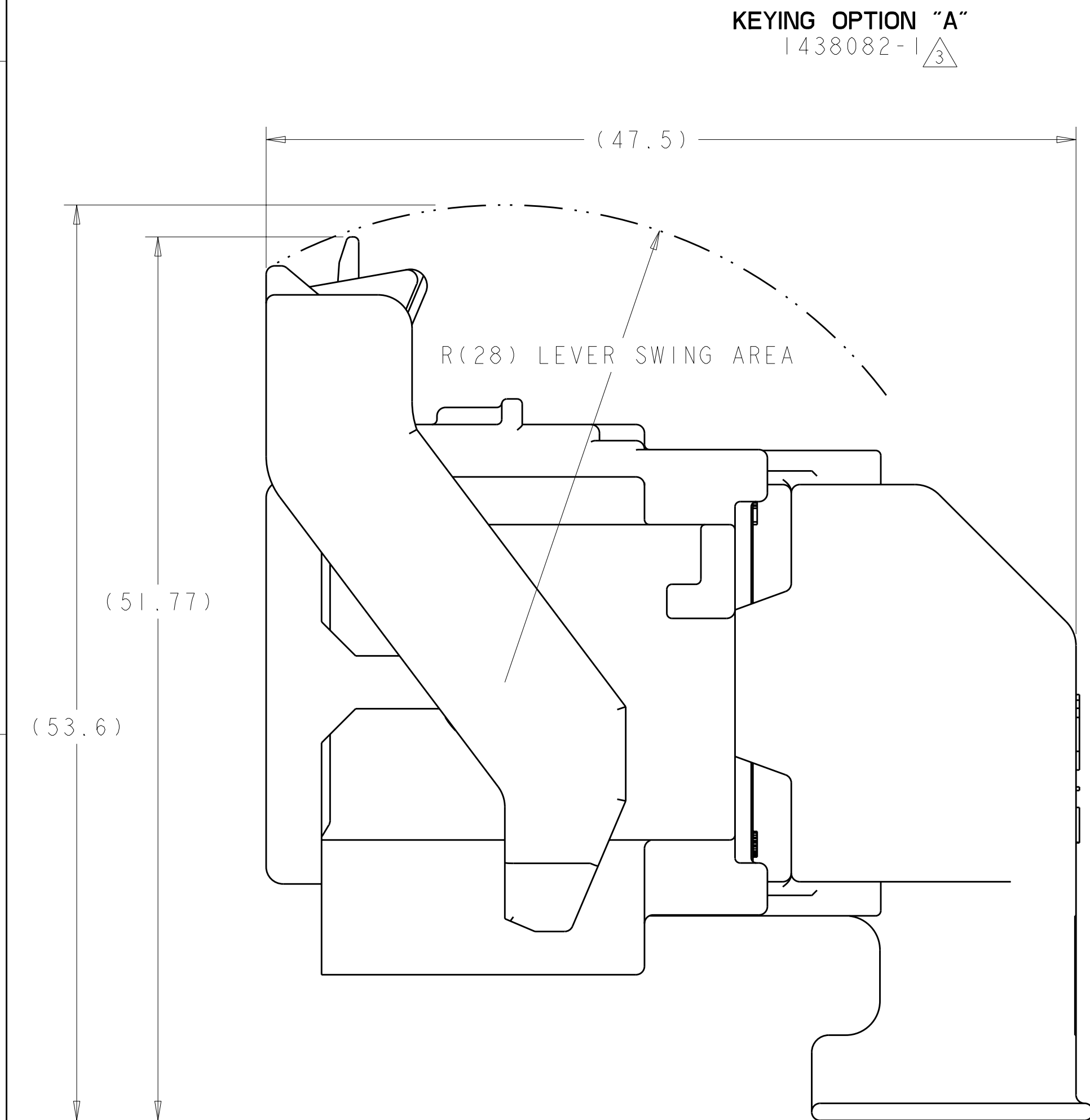


SCALE 1:1

KEYING OPTION "B"
1438082-2 \triangle_3





△ MATERIAL:
HARNESS - 35% GLASS FILLED PA66, BLACK
ALT MAT'L: HARNESS - 30% GLASS FILLED sPS, BLACK
SPACER - 40% GLASS FILLED PPS+PA66, RED
ALT MAT'L: 30% GLASS FILLED sPS, RED
ALT MAT'L: 35% GLASS FILLED PA66, RED
COVER - 35% GLASS FILLED PA66, BLACK
ALT MAT'L: COVER - 30% GLASS FILLED LCP, BLACK
CAM LEVER - 35% GLASS FILLED NYLON, GRAY
GROMMET - SILICONE, BROWN
PERIMETER SEAL - SILICONE, GREEN

2. CAM LEVER AND SPACER ARE SHIPPED IN PRE-LATCH POSITION.


③ SEE PINOUT CHART ON SHEETS 2, 3 AND 4 FOR CLOSED CIRCUIT CONFIGURATIONS.

④ CAVITIES WITH A NUMERIC SYMBOL INDICATES CLOSED TERMINAL LOCATIONS.
BLANK CAVITIES INDICATE OPEN TERMINAL HOLE LOCATIONS.

SHOWN WITH CAM LEVER AND SPACER
IN LOADED POSITION WITH
OPTIONAL WIRESHIELD

<small>1ST. DRAWING IS A CONTINUATION OF PREVIOUS DRAWING. ALL DIMENSIONS AND TOLERANCES SHOULD BE CONTACTED FOR THE LATEST REVISION.</small>		DWN W. VESTAL 01AUG2003		 Tyco Electronics Harrisburg, PA 17105-3608	
DIMENSIONS: mm		TOLERANCES UNLESS OTHERWISE SPECIFIED: 0 PLOC ±.010 1 PLOC ±.010 2 PLOC ±.010 3 PLOC ±.010 4 PLOC ±.010 ANGLES ±°.		NAME 46 WAY PCM CONNECTOR HARNESS ASSEMBLY	
		APPROV D. STRAUSSER 01AUG2003 PRODUCT SPEC		RESTRICTED TO	
MATERIAL SEE TABLE		APPLICATION SPEC		SIZE CAGE CODE DRAWING NO A 00779 C=1438082	
FINISH SEE TABLE		WEIGHT -		SCALE 4:1 SHEET 1 OF 5 REV	
CUSTOMER DRAWING					

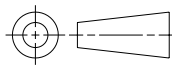
LOC	DIST	REVISIONS					
FX	00	P	LTR	DESCRIPTION	DATE	DWN	APVD
		-		SEE SHEET 1	-	-	-

		44							35		32							22								12		9	7	6				1	6-1438735-7	2LIT-14A464-SD-086																
		44							35		32															12		9	7	6				1	6-1438735-3	2LIT-14A464-SD-085																
									35																											6-1438735-2	2LIT-14A464-SD-084															
			43	42		40	39		37					29					20	18			15	14		11	10	9	8	7			4	3	1	6-1438735-1	2LIT-14A464-SD-083															
45		43						38	36			31					25	24						18	17	16		14	12				7	6		2	1	5-1438735-0	2LIT-14A464-SD-082													
45		43						38	36			31					25	24								16	14	12				7	6			2	1	4-1438735-9	2LIT-14A464-SD-081													
45		43						38	36			32	31				25	24		21		19	18	17	16		14	12				7	6			1	4-1438735-8	2LIT-14A464-SD-080														
45		43						39	38	37	36			31			25	24						18	17	16		14	13	12			9	7	6		2	1	4-1438735-7	2LIT-14A464-SD-079												
				42																20	18				13	11	10									2	1	3-1438735-8	2LIT-14A464-SD-078													
				42																20	18				13	11	10										1	3-1438735-7	2LIT-14A464-SD-077													
45		43						39	38	37	36			31			25	24		21	20	19	18	17			14	13	12			9				2	1	3-1438735-6	2LIT-14A464-SD-076													
45		43							38	36			31				25	24		21	20	19	18	17			14	12								2	1	3-1438735-5	2LIT-14A464-SD-075													
			43	42			40	39		37				29						20	18			15	14		11	10	9	8	7			4	3	2	1	3-1438735-3	2LIT-14A464-SD-074													
45		43						39	38	37	36			31			25	24				20	19	18	17			14	13	12			9				2	1	3-1438735-2	2LIT-14A464-SD-073												
45		43							38	36			31				25	24		21	20	19	18	17	16		14	12				7				2	1	3-1438735-1	2LIT-14A464-SD-072													
45		43						39	38	37	36			31			25	24		21	20	19	18	17	16		14	13	12			9	7				2	1	3-1438735-0	2LIT-14A464-SD-071												
45		43							38	36			31				25	24		21	20	19			16		14	12				7					2	1	2-1438735-9	2LIT-14A464-SD-070												
45		43						39	38	37	36			31			25	24		21	20	19			16		14	13	12			9	7				2	1	2-1438735-8	2LIT-14A464-SD-069												
45		43							38	36			31				25	24				20	19	18	17			14	12								2	1	2-1438735-6	2LIT-14A464-SD-068												
											33																13									6	5				2	1	2-1438735-5	2LIT-14A464-SD-067								
45	44	43	42					40			38	37	36		33	31				24	22	21	20		18	17	16	15				9	8					2		2-1438735-4	2LIT-14A464-SD-066											
			43												31		29								18							8						2		2-1438735-1	2LIT-14A464-SD-065											
45		43							38		36	35			31				25	24		21				16		14	12				7	6					2	1	2-1438735-0	2LIT-14A464-SD-064										
45		43						39	38	37	36	35			31				25	24					18	17	16		14	13	12			9	7	6				2	1	1-1438735-9	2LIT-14A464-SD-063									
45		43							38		36	35			32	31				25	24		21		19	18	17	16		14	12				7	6				1	1-1438735-8	2LIT-14A464-SD-062										
45		43							38		36	35			31				25	24							16		14	12				7	6				2	1	1-1438735-7	2LIT-14A464-SD-061										
45		43							38		36	35			31				25	24		21		19			16		14	12				7	6				2	1	1-1438735-6	2LIT-14A464-SD-060										
45		43							38		36	35			31				25	24					18	17	16		14	12				7	6				2	1	1-1438735-5	2LIT-14A464-SD-059										
45		43						39	38	37	36	35			31				25	24		21		19	18	17	16		14	13	12			9	7	6				2	1	1-1438735-4	2LIT-14A464-SD-058									
45		43							38		36	35			31				25	24		21		19	18	17	16		14	12				7	6				2	1	1-1438735-3	2LIT-14A464-SD-057										
				42							37											20	18			15	14		11	10	9	8	7			4	3	2	1	1-1438735-2	2LIT-14A464-SD-056											
45		43									36	35			31				24		21		19			16		14	12					7	6					1	1-1438735-1	2LIT-14A464-SD-055										
											35							27																				3				1-1438735-0	2LIT-14A464-SD-054									
				43										31		29										18						9	8						2		1438735-9	2LIT-14A464-SD-053										
											35							27																7							1438735-8	2LIT-14A464-SD-052										
46	45	44	43	42	41	40	39	38	37	36	35	34	33	32	31	30	29	28	27	26	25	24	23	22	21	20	19	18	17	16	15	14	13	12	11	10	9	8	7	6	5	4	3	2	1		PART NUMBER	FORD PART NUMBER				
TERMINAL HOLE POSITION																																																				
PIN-OUT CHART KEYING OPTION "A" 																																																				

THIS DRAWING IS UNPUBLISHED. IT IS SUBJECT TO CHANGE WITHOUT NOTICE FOR TYCO ELECTRONICS CORPORATION. IT IS SUBJECT TO CHANGE WITHOUT NOTICE FOR THE CUSTOMER'S ORGANIZATION. IT IS SUBJECT TO CHANGE WITHOUT NOTICE FOR THE LATEST REVISION.

DIMENSIONS:

mm



MATERIAL

-

TOLERANCES UNLESS OTHERWISE SPECIFIED:

9 PLC ±.3

1 PLC ±0.10

5 PLC ±.

4 PLC ±.

ANGLES ±°

FINISH -

DWN R. VESTAL 01AUG2003

CHK D. STRAUSSER 01AUG2003

APVD D. STRAUSSER 01AUG2003

NAME

46 WAY PCM CONNECTOR HARNESS ASSEMBLY

PRODUCT SPEC

APPLICATION SPEC

WEIGHT

CUSTOMER DRAWING

SIZE A

CAGE CODE 00779


DRAWING NO. C=1438082

RESTRICTED TO -

SCALE 4:1

SHEET 3 OF 5

REV S 1



Tyco Electronics
Harrisburg, PA 17105-3608

Mouser Electronics

Authorized Distributor

Click to View Pricing, Inventory, Delivery & Lifecycle Information:

[TE Connectivity:](#)

[1-1438082-5](#)