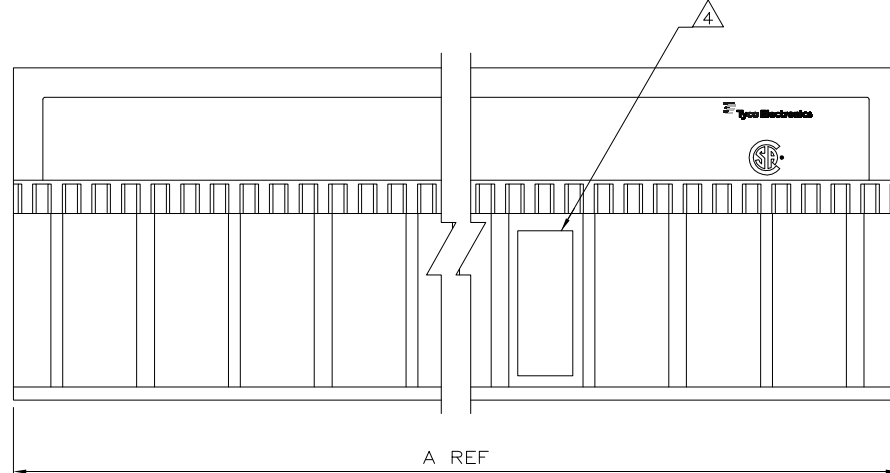
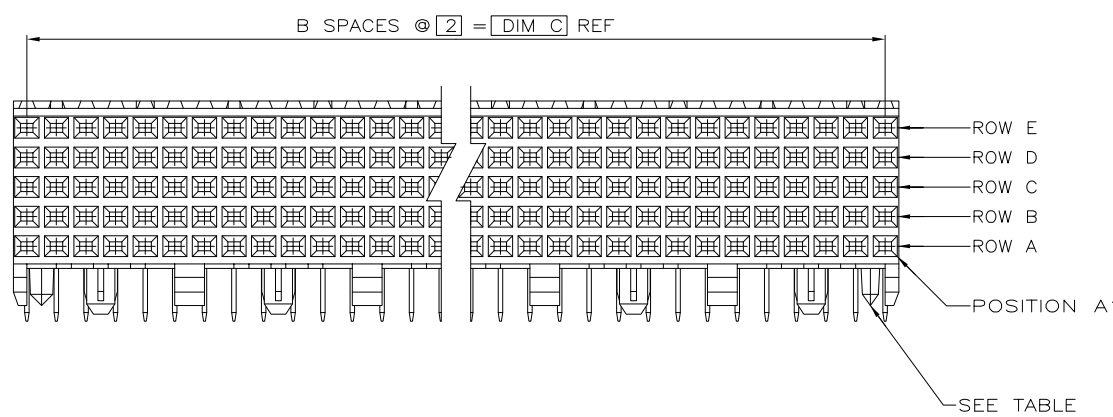


THIS DRAWING IS UNPUBLISHED. RELEASED FOR PUBLICATION  
 ALL RIGHTS RESERVED.

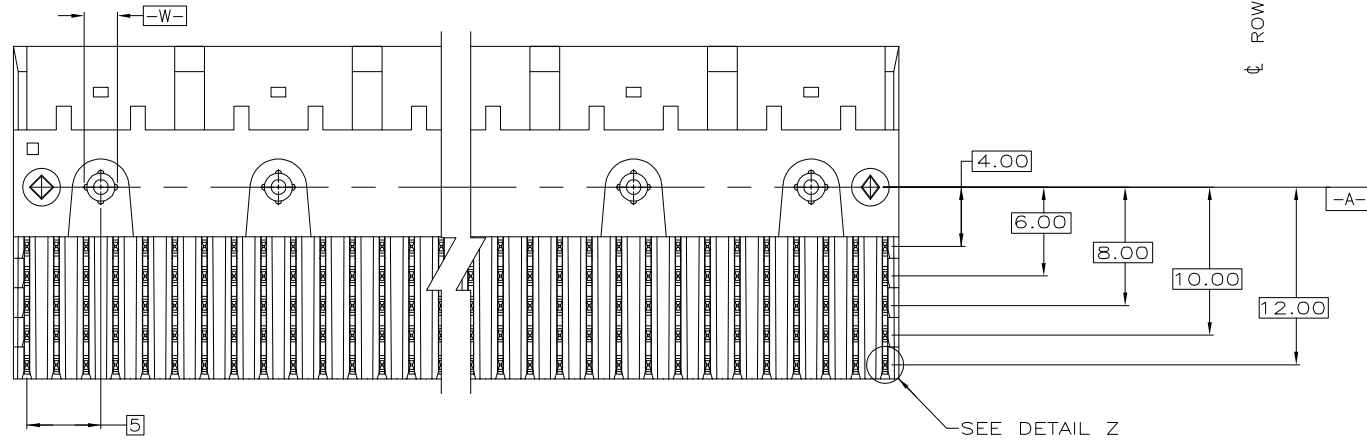
LOC	DIST	REVISIONS			
#	LTR	DESCRIPTION	DATE	DN	APP
AD	00				
C		REVISED PER ECR-15-012883	06SEP15	DS	FY



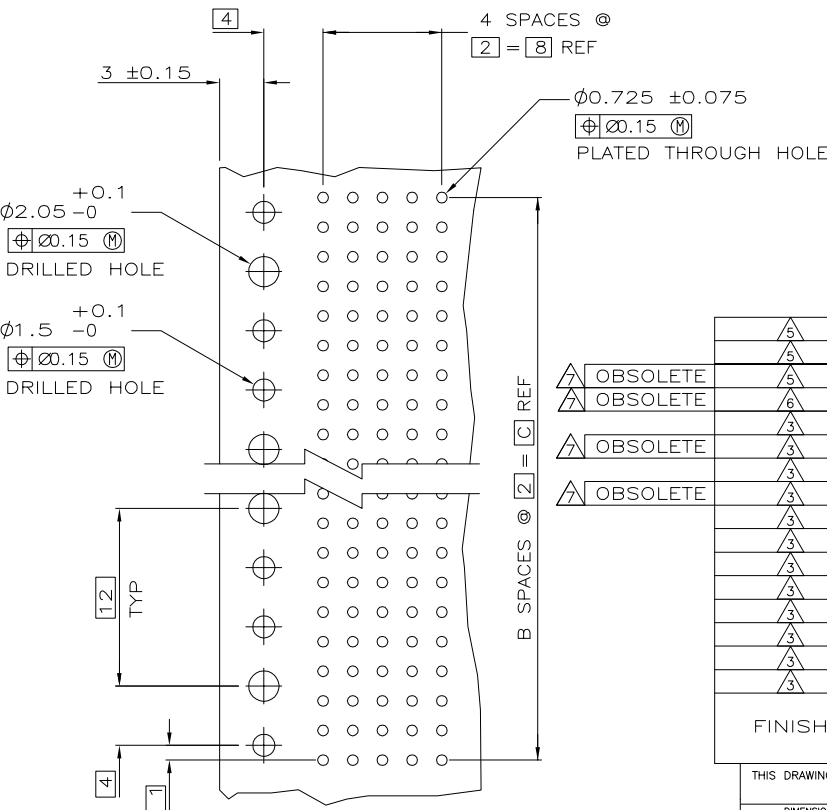
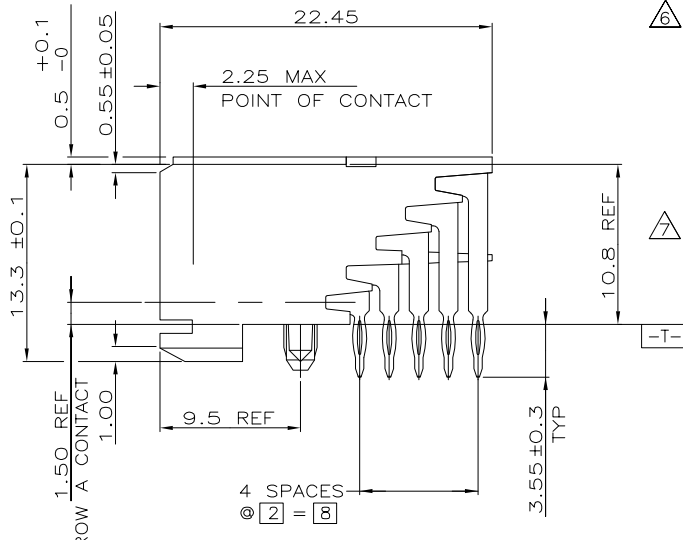
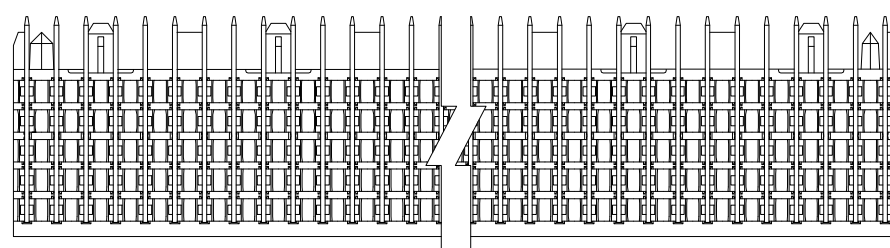
A REF



SEE TABLE



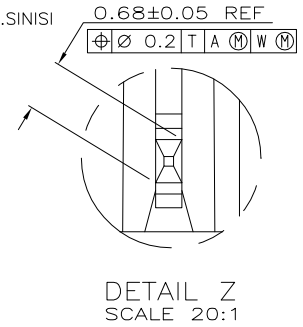
SEE DETAIL Z



RECOMMENDED CIRCUIT PATTERN  
 PER IPC-D300 TYPE II, CLASS C  
 (COMPONENT SIDE)

- ① HOUSING MATERIAL: LIQUID CRYSTAL POLYMER  
 COLOR: NATURAL.
- ② CONTACT MATERIAL: PHOSPHOR-BRONZE.
- ③ CONTACT FINISH:  
 UNDERPLATE (ENTIRE CONTACT):  
 0.00127 MIN NICKEL PER SAE-AMS-QQ-N-290  
 ON MATING SURFACES:  
 CONFORMS TO ALL TESTING SPECIFIED FOR TELCORDIA  
 UNCONTROLLED ENVIRONMENT.  
 ON LEADS:  
 0.0006 MIN MATTE TIN PER ASTM B 545 OVER UNDERPLATE.  
 LUBRICATION (MIN MATING SURFACES):  
 SURFACE CONDITIONER AFTER PLATING.
- ④ PART MARKING LOCATED APPROXIMATELY AS SHOWN.
- ⑤ CONTACT FINISH:  
 UNDERPLATE (ENTIRE CONTACT):  
 0.00127 MIN NICKEL PER SAE-AMS-QQ-N-290  
 ON MATING SURFACES:  
 0.00076 MIN NICKEL OR COBALT HARDENED GOLD  
 PER ASTM B-488 OVER UNDERPLATE.  
 ON LEADS:  
 0.0006 MIN MATTE TIN PER ASTM B 545 OVER UNDERPLATE.  
 LUBRICATION (MIN MATING SURFACES):  
 SURFACE CONDITIONER AFTER PLATING.
- ⑥ CONTACT FINISH:  
 UNDERPLATE (ENTIRE CONTACT):  
 0.00127 MIN NICKEL PER SAE-AMS-QQ-N-290  
 ON MATING SURFACES:  
 0.00127 MIN NICKEL OR COBALT HARDENED GOLD  
 PER ASTM B-488 OVER UNDERPLATE.  
 ON LEADS:  
 0.0006 MIN MATTE TIN PER ASTM B 545 OVER UNDERPLATE.  
 LUBRICATION (MIN MATING SURFACES):  
 SURFACE CONDITIONER AFTER PLATING.

OBsolete PARTS: OBSOLETE CIS STREAMLINING PER D.RENAUD/D.SINISI



DETAIL Z  
 SCALE 20:1

REV	DESCRIPTION	DATE	BY	CHKD	QTY	NO OF SIGNAL POSN	PART NUMBER
5	NO	22	11	23.88	60	3-5223008-2	
5	YES	10	5	11.88	30	3-5223008-1	
5	NO	46	23	47.88	120	3-5223008-4	
6	NO	46	23	47.88	120	2-5223008-4	
3	NO	214	107	215.88	540	1-5223008-2	
3	NO	130	65	131.88	330	1-5223008-1	
3	NO	118	59	119.88	300	1-5223008-0	
3	NO	106	53	107.88	270	5223008-9	
3	NO	94	47	95.88	240	5223008-8	
3	NO	82	41	83.88	210	5223008-7	
3	NO	70	35	71.88	180	5223008-6	
3	NO	58	29	59.88	150	5223008-5	
3	NO	46	23	47.88	120	5223008-4	
3	NO	34	17	35.88	90	5223008-3	
3	NO	22	11	23.88	60	5223008-2	
3	YES	10	5	11.88	30	5223008-1	

FINISH	POSITIONING PEGS	C	B	A	NO OF SIGNAL POSN	PART NUMBER
		C	B	A		

THIS DRAWING IS A CONTROLLED DOCUMENT.		DWN B.MCMMASTER 22NOV04		STE TE Connectivity	
DIMENSIONS: mm		CHK R.WERTZ 22NOV04		ASSEMBLY, RECEPTACLE, SIGNAL, RIGHT ANGLE, Z-PACK 2mm FB, 5 ROW, PRESS FIT LEAD	
TOLERANCES UNLESS OTHERWISE SPECIFIED:		APPD R.WERTZ 22NOV04		APPLICATION SPEC	
0 PLC	± -	NAME		SIZE CAGE CODE DRAWING NO RESTRICTED TO	
1 PLC	± -	R.WERTZ		A1 00779 C=5223008	
2 PLC	± 0.13	PRODUCT SPEC		WEIGHT	
3 PLC	± -	APPLICATION SPEC		SCALE 4:1 SHEET 1 OF 1 REV C	
4 PLC	± -	MATERIAL		CUSTOMER DRAWING	
ANGLES	± -	FINISH			

# Mouser Electronics

Authorized Distributor

Click to View Pricing, Inventory, Delivery & Lifecycle Information:

[TE Connectivity:](#)

[5223008-2](#)