

LOC		DIST		REVISIONS			
P	LYR	DESCRIPTION		DATE	OWN	APVD	
	B1	REVISED PER ECO-11-005027		21MAY2011	RK	HMR	

⚠ MATERIAL: HOUSING - HIGH TEMPERATURE THERMOPLASTIC,
COLOR - GRAY
TERMINALS - 0.31[.012] THICK COPPER ALLOY PLATED WITH
1.27µm[.000050] MINIMUM GOLD IN LOCALIZED GOLD PLATE
AREA, 2.5 µm[.000100] MINIMUM MATTE TIN ON TERMINATION
END, BOTH OVER 1.27µm[.000050] MINIMUM NICKEL OVER
ENTIRE TERMINAL.
BOARDLOCK - PHOS BRONZE, 1/2 HARD, 3.81µm[.000150]
MINIMUM MATTE TIN OVER 1.27µm[.000050] MINIMUM NICKEL
ON TERMINAL END.

⚠ JACK CAVITY CONFORMS TO FCC 47 RULES AND REGULATIONS,
PART 68 SUBPART F.

⚠ DATUM ESTABLISHED BY CUSTOMER.

⚠ PACKAGING TAPE AND REEL: (PER EIA 481 SPEC)
32mm WIDE TAPE
24mm POCKET PITCH
560mm REEL DIA
600 PIECES PER REEL

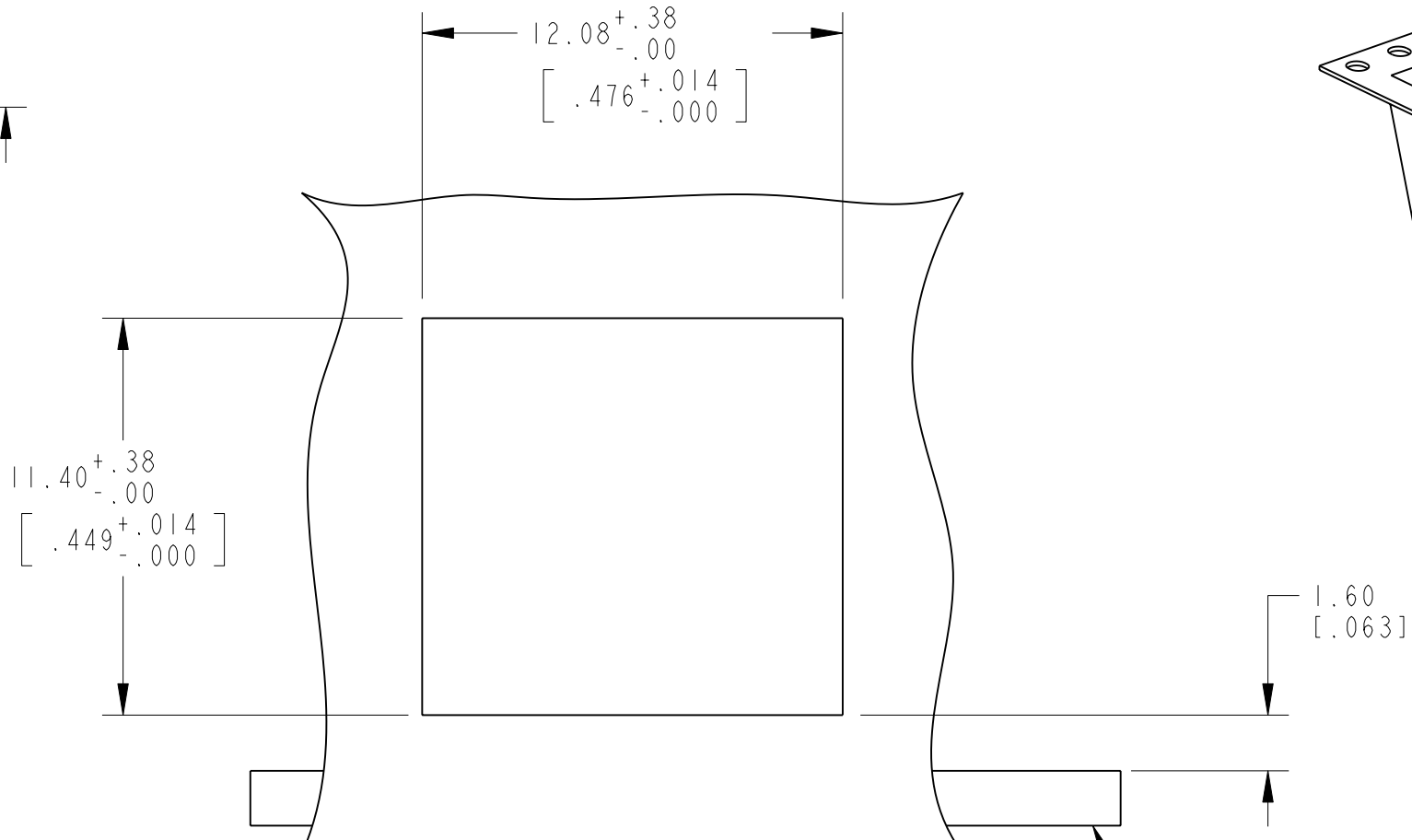
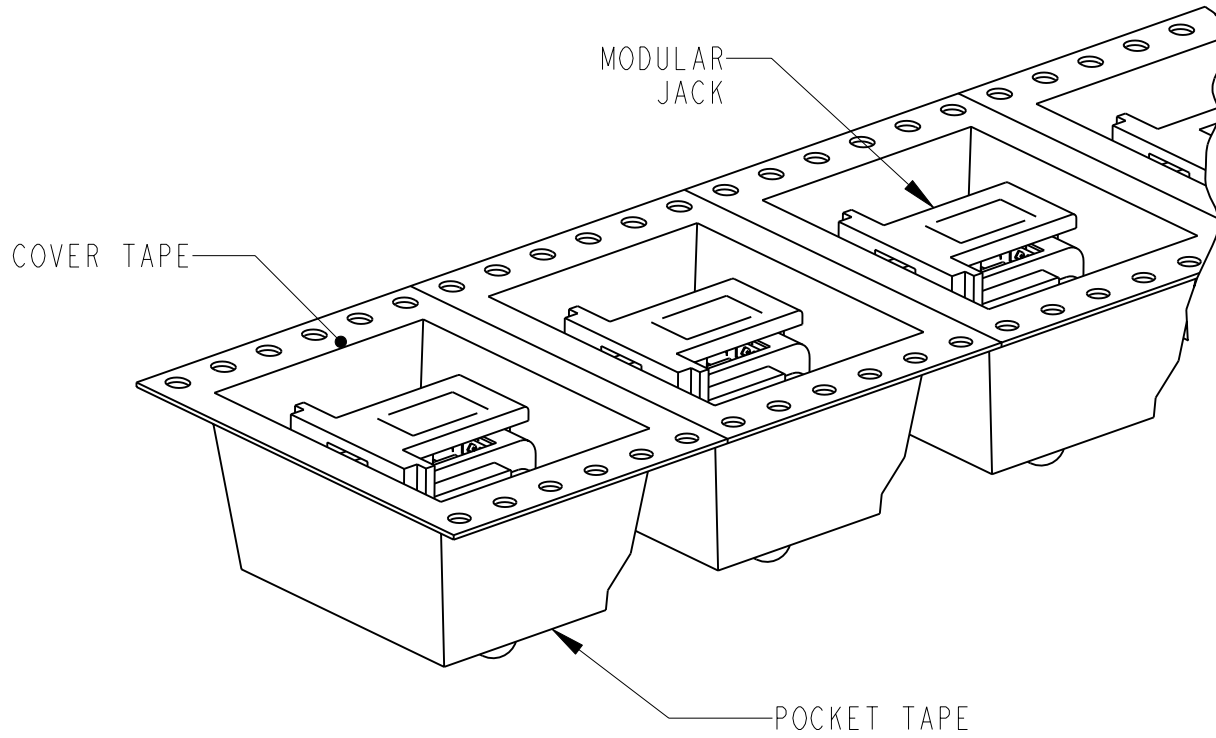
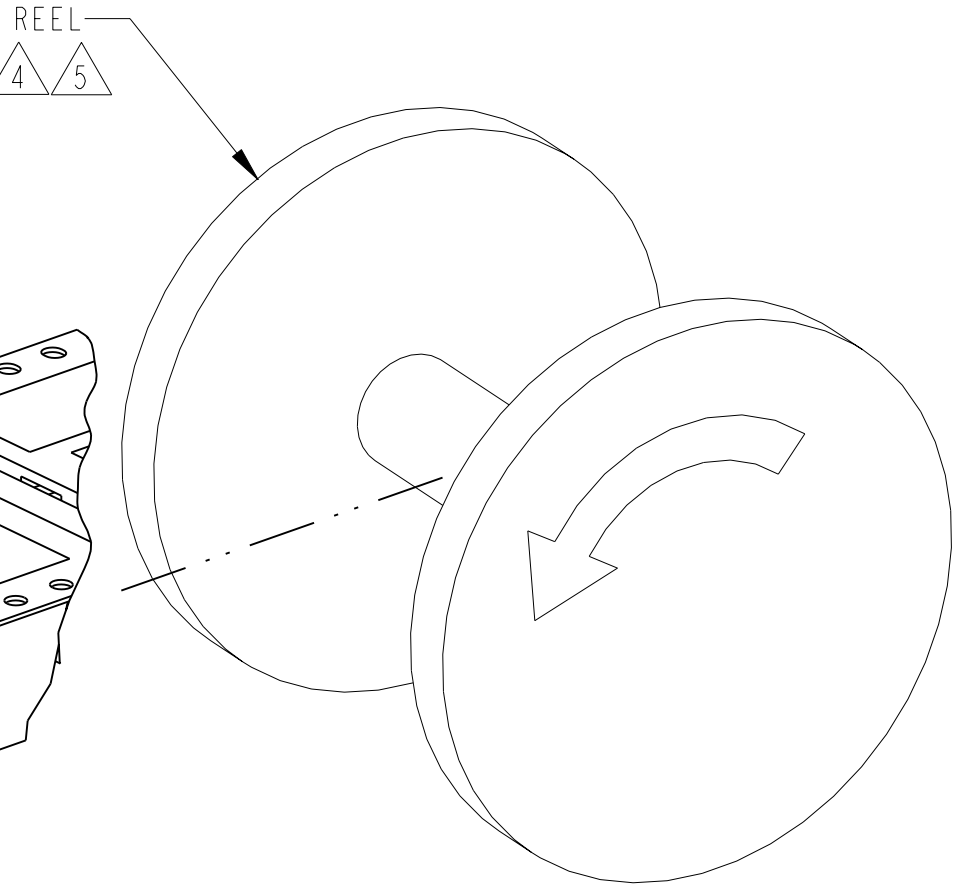
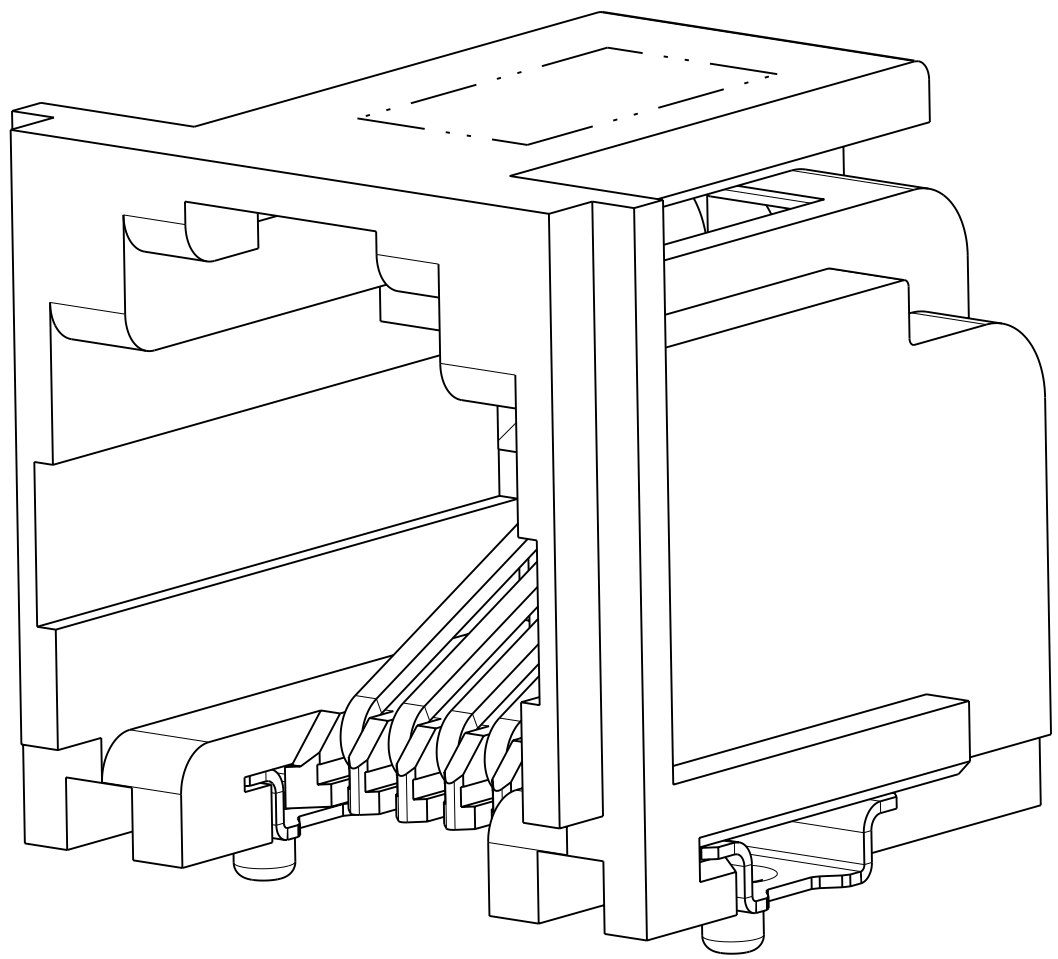
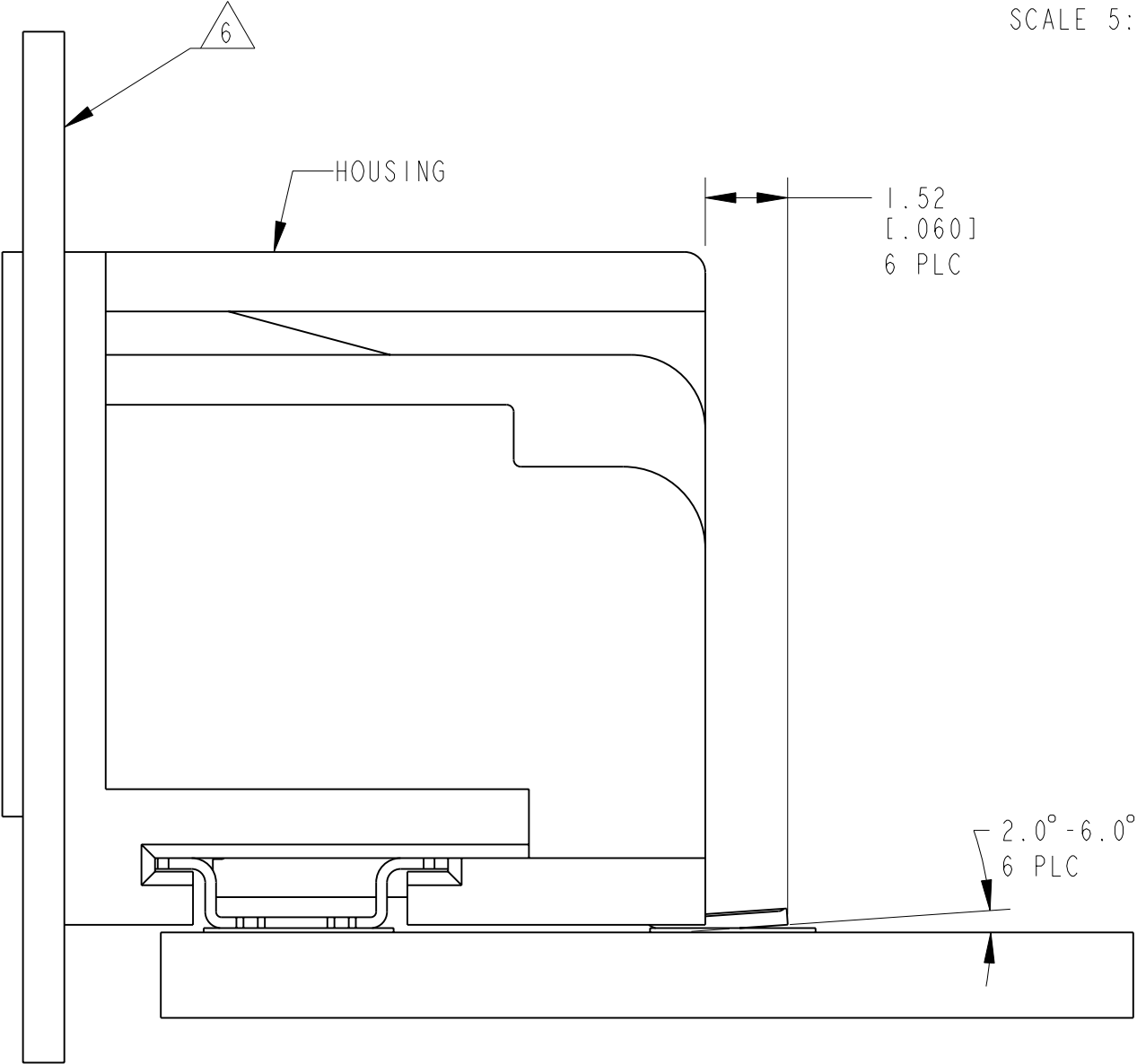
⚠ PACKAGING TAPE AND REEL: (PER EIA 481 SPEC)
32mm WIDE TAPE
24mm POCKET PITCH
330mm REEL DIA
200 PIECES PER REEL

⚠ CONNECTOR SHOULD BE POSITIONED THROUGH PANEL
CUTOUT AS SHOWN TO SUPPORT TOP OF MODULAR JACK FOR
STRAIN RELIEF

⚠ MANUFACTURING DATE CODE LOCATED APPROXIMATELY AS SHOWN.
FIRST 2 DIGITS ARE YEAR, SECOND 2 DIGITS ARE WORK WEEK, AND LAST
DIGIT IS THE DAY OF THE WEEK

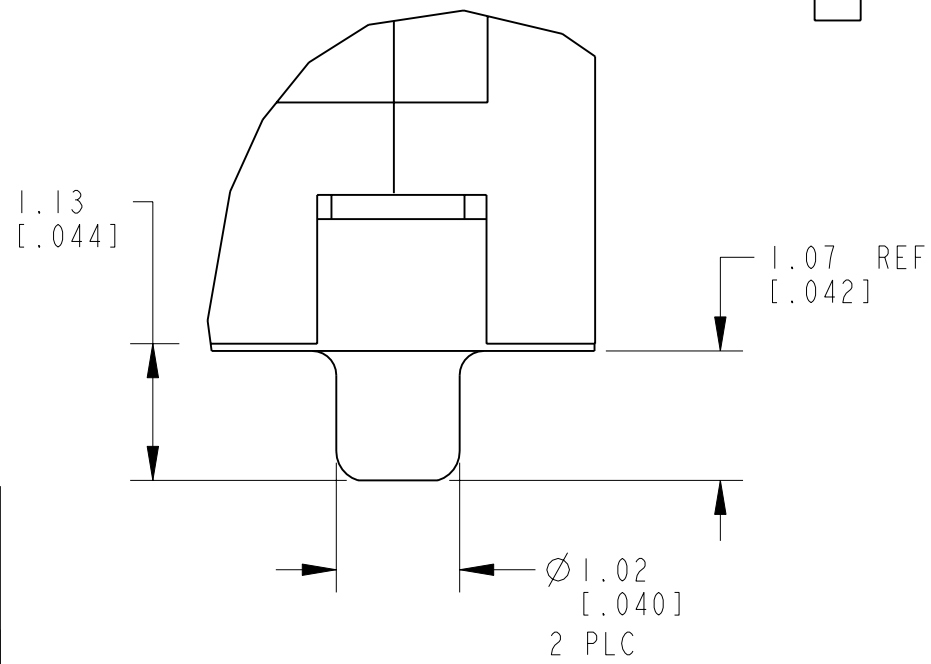
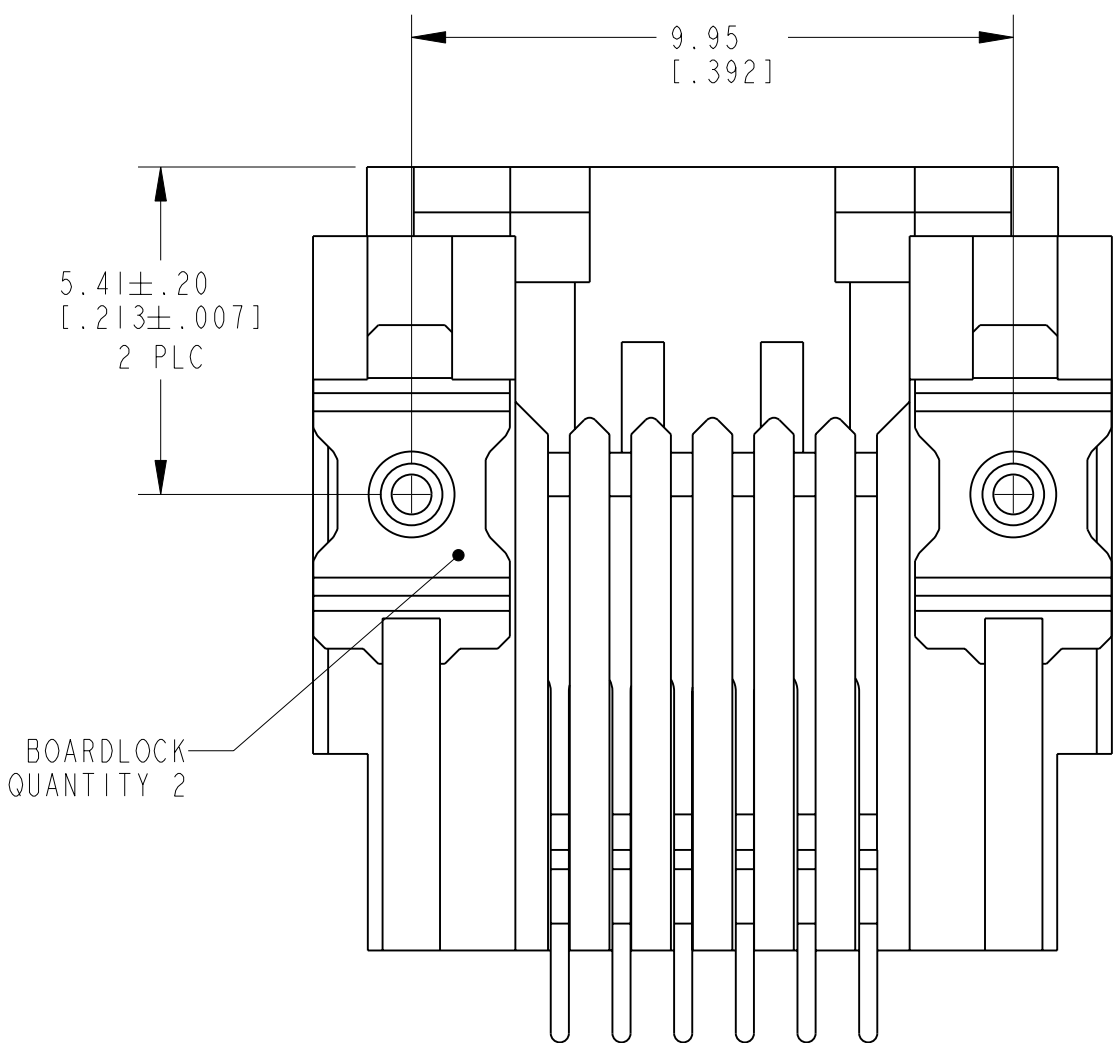
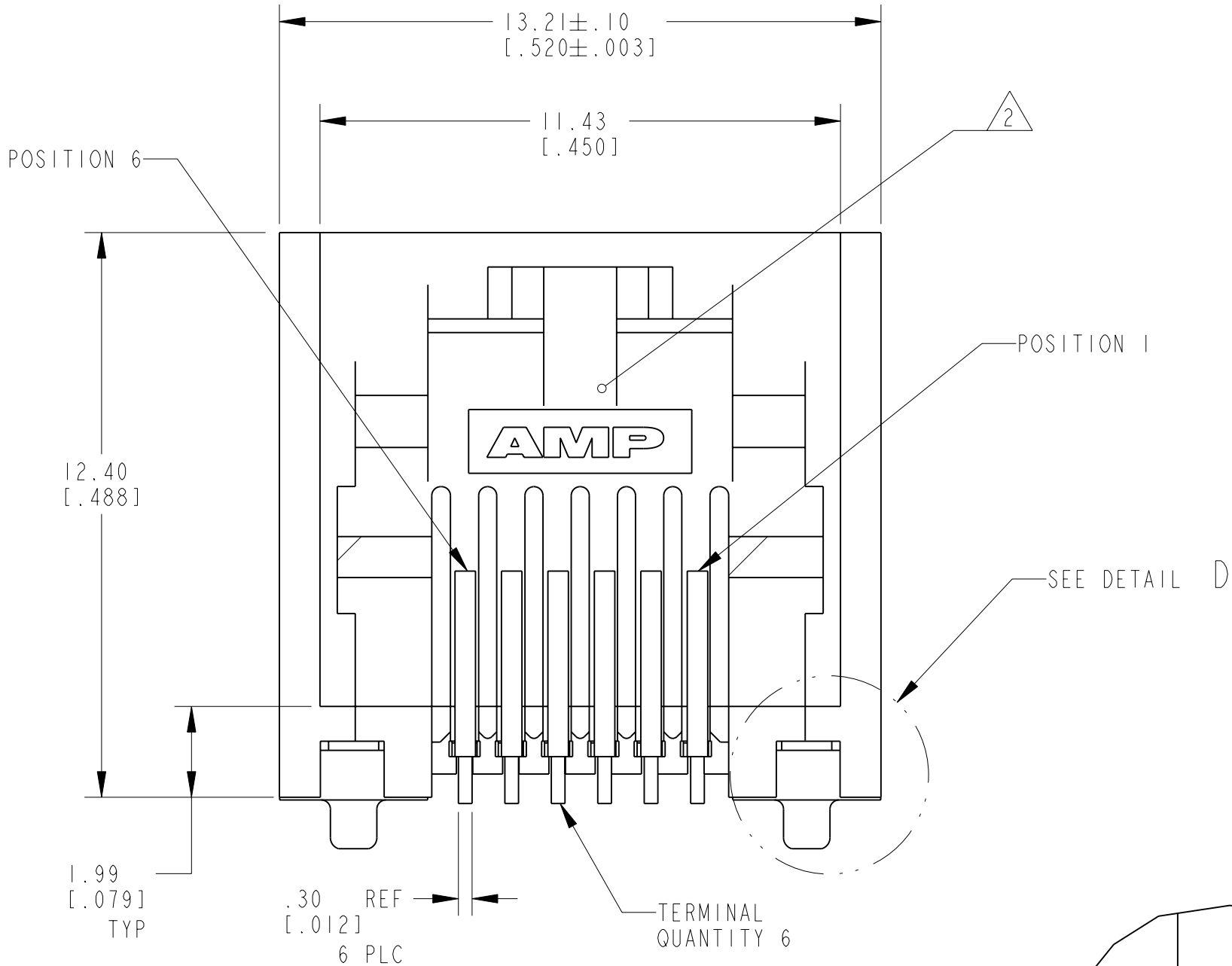
RECOMMENDED PRINTED CIRCUIT BOARD LAYOUT

COMPONENT SIDE
SCALE 5:1



RECOMMENDED PANEL CUTOUT
SCALE 5:1

PRINTED CIRCUIT BOARD



DETAIL D
SCALE 16:1

NONE	⚠ 5	5406514-3
⚠ 7	⚠ 5	5406514-2
⚠ 7	⚠ 4	5406514-1
MARKING	PACKAGING	PART NUMBER

THIS DRAWING IS A CONTROLLED DOCUMENT.		OWN G. ATTADIA 28JUL2005	TE Connectivity	
DIMENSIONS: mm[INCHES]		CHK J. WESTMAN 28JUL2005	NAME MODULAR JACK ASSEMBLY, 6/6 POSITION, SURFACE MOUNT, RIGHT ANGLE, WITH INWARD BOARDLOCKS	
TOLERANCES UNLESS OTHERWISE SPECIFIED:		APVD S. FLICKINGER 28JUL2005	SIZE CAGE CODE DRAWING NO	
9 PLC ±		PRODUCT SPEC	RESTRICTED TO	
1 PLC ±		108-1689	A1 00779	
3 PLC ±		APPLICATION SPEC	C=5406514	
5 PLC ±0.13(.005)		114-6040	SCALE 8:1	
4 PLC ±		WEIGHT .95 GRAMS	SHEET 1 OF 1	
ANGLES ±1		CUSTOMER DRAWING	REV B1	
FINISH				

Mouser Electronics

Authorized Distributor

Click to View Pricing, Inventory, Delivery & Lifecycle Information:

[TE Connectivity:](#)

[5406514-3](#)