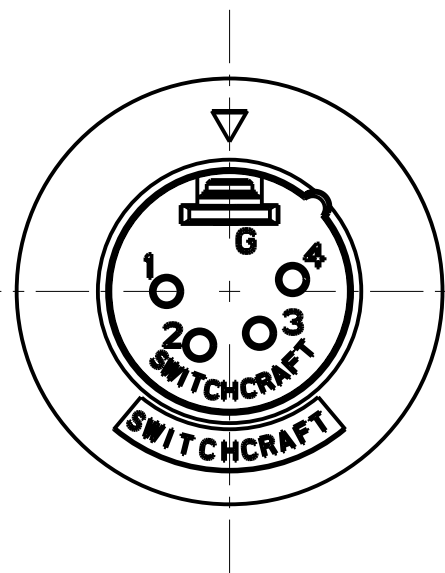
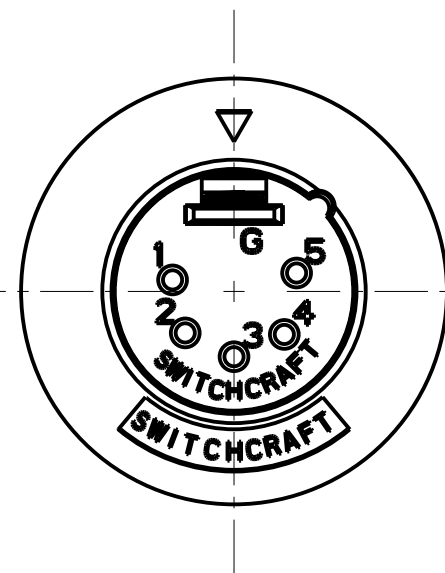


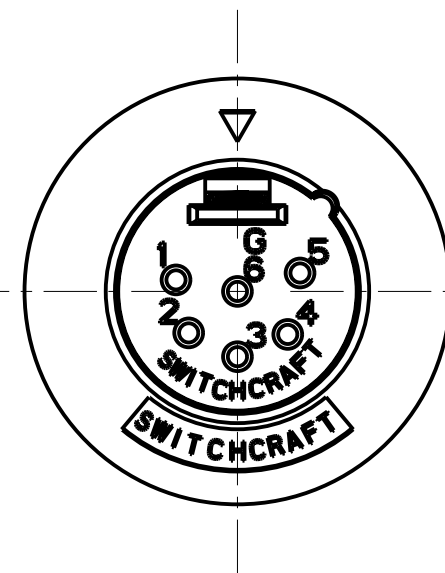
3 PIN



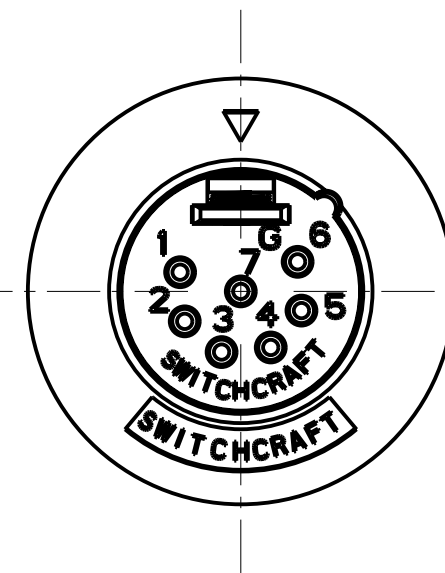
4 PIN



5 PIN



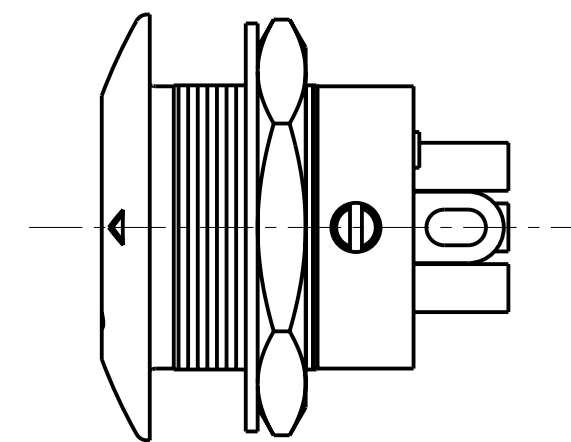
6 PIN



7 PIN

NOTES:

1. ALL DIMENSIONS REF. UNLESS OTHERWISE SPECIFIED.

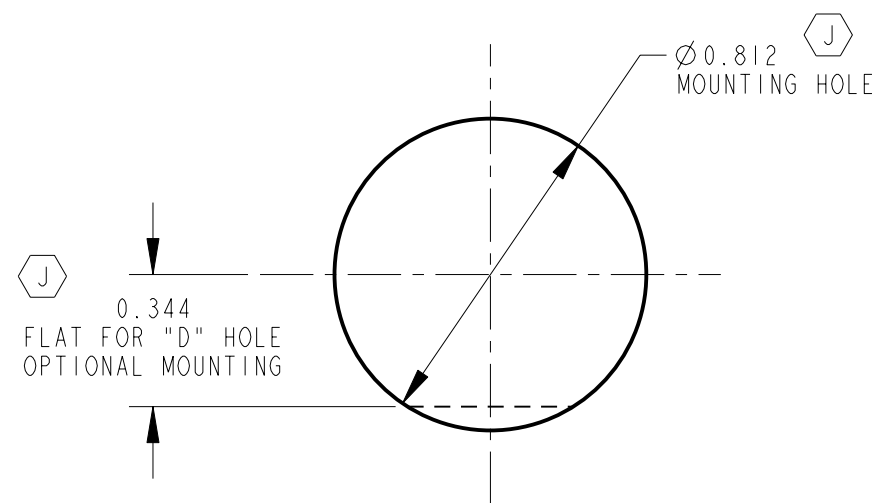


STANDARD SERIES

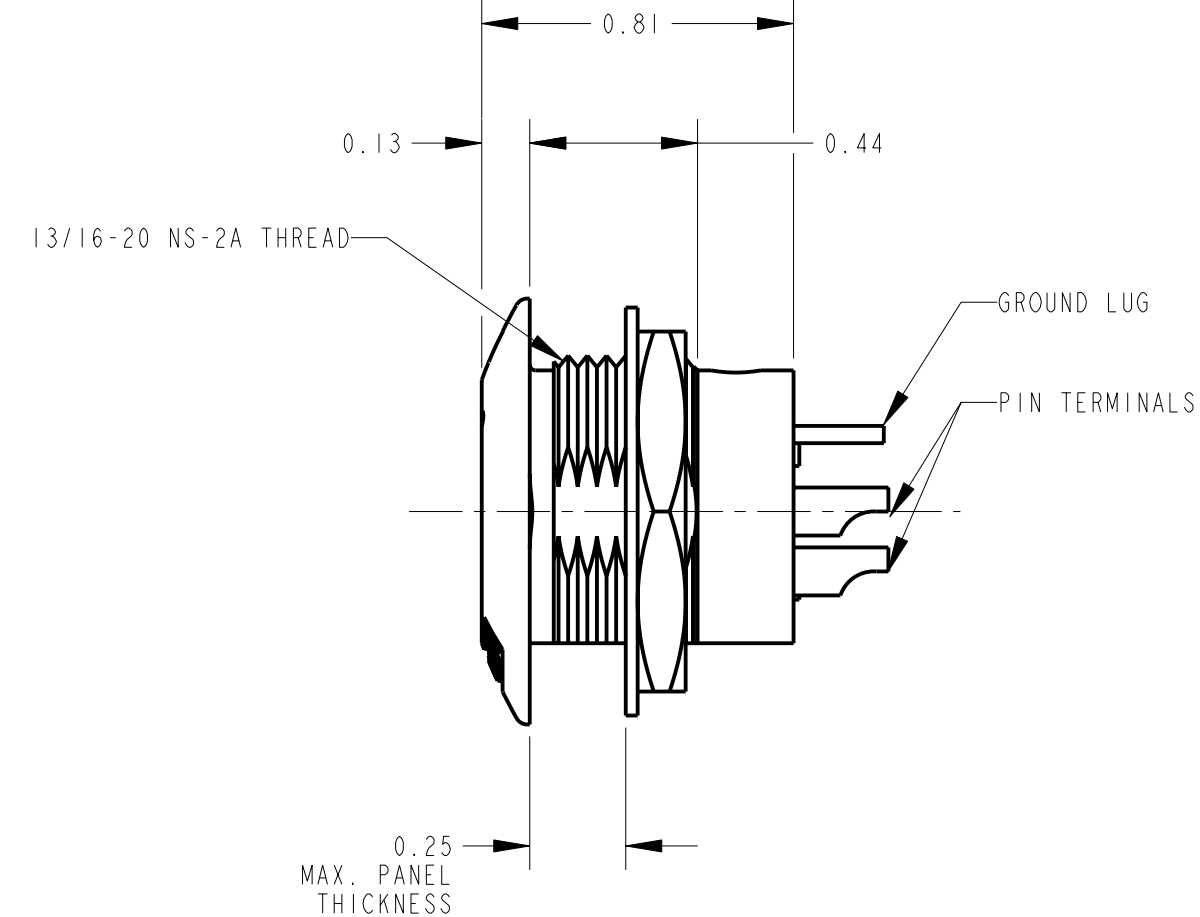
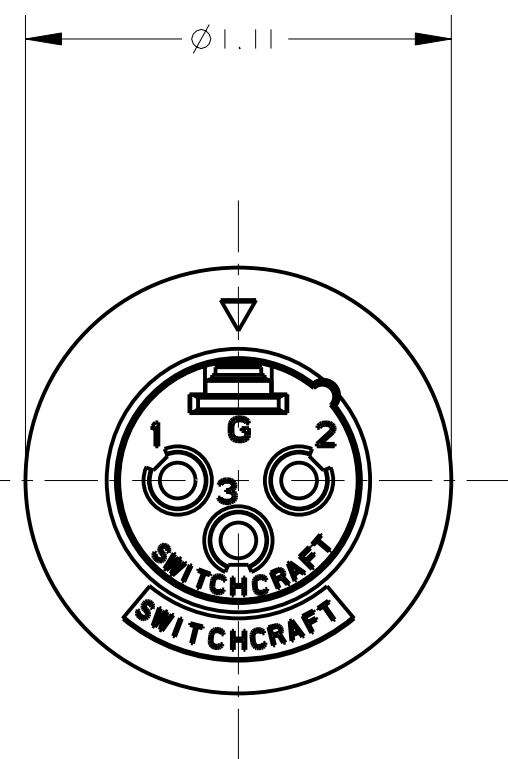
SCREW - STAINLESS STEEL
NUT - BRASS, NICKEL PLATED
HOUSING - ZINC, NICKEL PLATED
SOLDER TERMINAL - BRASS, ELECTRO TIN
INSULATOR - POLYESTER, GREEN (UL94V-0)
CONTACT PIN - BRASS, SILVER PLATED

B M -
CONTACT PLATING
BLANK = SILVER (STANDARD)
AU = GOLD
HOUSING FINISH
BLANK = NICKEL PLATE (STANDARD)
B = BLACK

NO. OF CONTACTS:
3 = 3 CONTACTS
4 = 4 CONTACTS
5 = 5 CONTACTS
6 = 6 CONTACTS
7 = 7 CONTACTS



RECOMMENDED PANEL CUT-OUT



PROFESSIONAL SERIES

SAME AS ABOVE EXCEPT
CONTACT PIN - PHOSPHOR BRONZE, GOLD OVER NICKEL

QGP 29
NO. OF CONTACTS:
3 = 3 CONTACTS
4 = 4 CONTACTS
5 = 5 CONTACTS
6 = 6 CONTACTS
7 = 7 CONTACTS

CUSTOMER DRAWING

G	22383	9-30-99	JL	DG	<div>★ STAR SYMBOL DENOTES CRITICAL DIMENSION</div> <div>UNLESS OTHERWISE SPECIFIED</div> <div>1. ALL DIMENSIONS IN INCHES - TWO PLACE DECIMALS ±0.01 - THREE PLACE DECIMALS ±0.005 - ANGLES ±1° - ALL DIA. CONCENTRIC WITHIN 0.005 T.I.R.</div> <div>2. FEATURES ON THE SAME CENTERLINE MUST BE ALIGNED WITHIN ±0.002</div> <div>3. REMOVE ALL BURRS</div>	THIS DRAWING DESCRIBES A DESIGN CONSIDERED PROPRIETARY IN NATURE, DEVELOPED AND MANUFACTURED BY SWITCHCRAFT INC. AND IS RELEASED ON A CONFIDENTIAL BASIS FOR IDENTIFICATION PURPOSES ONLY.				
F	ECO #21070	2-3-97	MM	RB		SIZE	WIDTH	MULT	LBS/M	TEMPER
E	ECO #21035	2-3-97	MM	RB		FINISH SPEC No.			MATERIAL SPEC No.	
D	20627	1-20-96	SG	SG		FIRST USED ON		SCALE 2:1		<div>Switchcraft®</div> <div>SHEET OF </div>
J	26363	3-19-09	TJK	TJK		DATE DRAWN	BY	CHKD	APVD	
H	23590	12-27-00	RJ	DK	8-Aug-94	SG	SG 8-10-94	GHJ 8-10-94		
REV	ECO NUMBER	DATE	BY	APVD	NAME	B SERIES MALE QG			PART No.	REV
REVISIONS					DO NOT SCALE DRAWING	B_M SERIES			J	

Mouser Electronics

Authorized Distributor

Click to View Pricing, Inventory, Delivery & Lifecycle Information:

Switchcraft:

[B4M](#) [B5M](#) [B6M](#) [B3M](#) [B3MB](#) [B7M](#)