

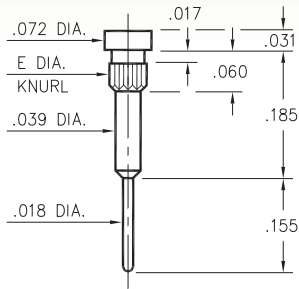
MALE PCB PINS

PRINTED CIRCUIT PINS

1067

1067-X-00-XX-00-00-03-0

Press-fit in .042/.055 mounting hole

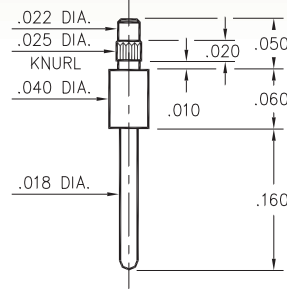


Basic Part Number	Knurl Dia. E	Mounting Hole
1067-1	.058	.055
1067-2	.045	.042

3158

3158-0-00-XX-00-00-03-0

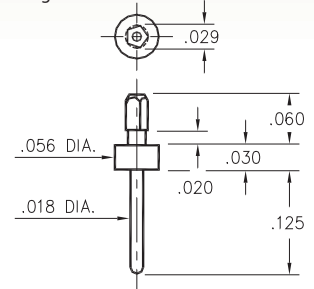
Press-fit in .023 mounting hole



9000

9000-0-00-XX-00-00-03-0

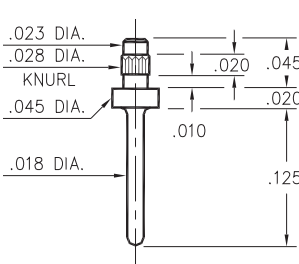
Pentagonal press-fit in .025 plated through-hole



3157

3157-0-00-XX-00-00-03-0

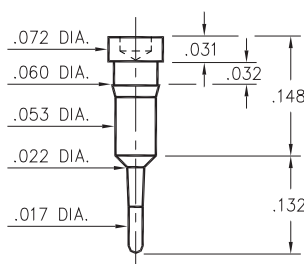
Press-fit in .026 mounting hole



0915

0915-0-00-XX-00-00-03-0

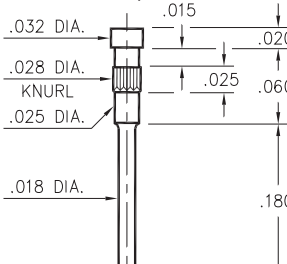
Press-fit in .057 mounting hole



3154

3154-0-00-XX-00-00-03-0

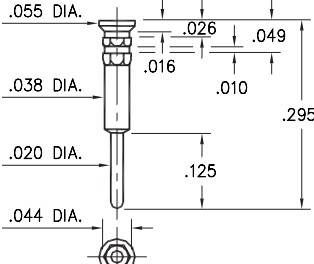
Press-fit in .026 mounting hole
Pin material is Phosphor Bronze 544 (B2)



0542

0542-0-00-XX-00-00-03-0

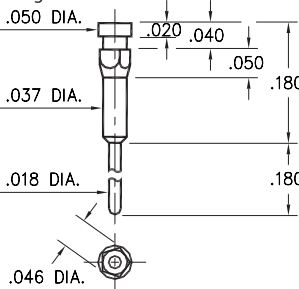
Hex press-fit in .039 plated through-hole



0522

0522-0-00-XX-00-00-03-0

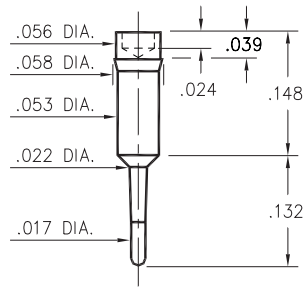
Pentagonal press-fit in .042 plated through-hole



0952

0952-0-00-XX-00-00-03-0

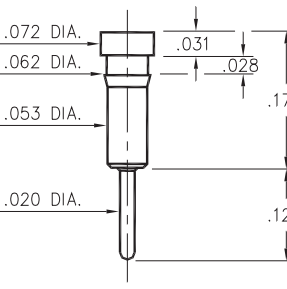
Press-fit in .056 mounting hole



0257

0257-0-00-XX-00-00-03-0

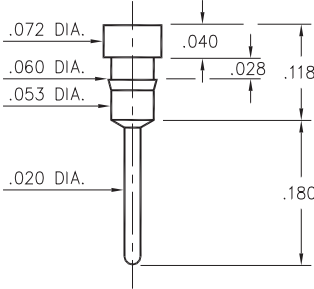
Press-fit in .059 mounting hole



8940

8940-0-00-XX-00-00-03-0

Press-fit in .057 mounting hole



SPECIFICATIONS:

Pin Material: Brass Alloy 360, 1/2 Hard
(Except where noted)

Dimensions: Inches

Tolerances On: Lengths: ±.005
Diameters: ±.002
Angles: ± 2°



ORDER CODE: XXXX - X - 00 - XX - 00 - 00 - 03 - 0

BASIC PART #

SPECIFY PIN FINISH:

- 01 200 μ" TIN/LEAD OVER NICKEL
- ◆ 80 200 μ" TIN OVER NICKEL (RoHS)
- ◆ 15 10 μ" GOLD OVER NICKEL (RoHS)
- ◆ 21 20 μ" GOLD OVER NICKEL (RoHS)
- ◆ 34 50 μ" GOLD OVER NICKEL (RoHS)



Mouser Electronics

Authorized Distributor

Click to View Pricing, Inventory, Delivery & Lifecycle Information:

Mill-Max:

[3158-0-00-01-00-00-03-0](#) [3154-0-00-01-00-00-03-0](#) [0952-0-00-80-00-00-03-0](#) [0915-0-00-80-00-00-03-0](#) [1067-1-00-01-00-00-03-0](#) [0952-0-00-01-00-00-03-0](#) [0915-0-00-01-00-00-03-0](#) [0542-0-00-01-00-00-03-0](#) [0522-0-00-01-00-00-03-0](#) [0257-0-00-01-00-00-03-0](#) [3158-0-00-80-00-00-03-0](#) [3154-0-00-80-00-00-03-0](#) [0257-0-00-15-00-00-03-0](#) [0257-0-00-21-00-00-03-0](#) [0257-0-00-34-00-00-03-0](#) [0522-0-00-15-00-00-03-0](#) [0522-0-00-21-00-00-03-0](#) [0522-0-00-34-00-00-03-0](#) [0542-0-00-15-00-00-03-0](#) [0542-0-00-21-00-00-03-0](#) [0542-0-00-34-00-00-03-0](#) [0915-0-00-15-00-00-03-0](#) [0915-0-00-21-00-00-03-0](#) [0915-0-00-34-00-00-03-0](#) [0952-0-00-21-00-00-03-0](#) [0952-0-00-34-00-00-03-0](#) [1067-1-00-15-00-00-03-0](#) [1067-1-00-21-00-00-03-0](#) [1067-1-00-34-00-00-03-0](#) [1067-2-00-34-00-00-03-0](#) [3154-0-00-21-00-00-03-0](#) [3154-0-00-34-00-00-03-0](#) [3157-0-00-15-00-00-03-0](#) [3157-0-00-34-00-00-03-0](#) [3158-0-00-15-00-00-03-0](#) [3158-0-00-21-00-00-03-0](#) [3158-0-00-34-00-00-03-0](#) [1067-2-00-01-00-00-03-0](#) [1067-2-00-15-00-00-03-0](#) [1067-2-00-21-00-00-03-0](#) [0915-0-00-00-00-00-03-0](#) [3154-0-00-00-00-00-03-0](#) [1067-2-00-00-00-00-03-0](#) [9000-0-00-00-00-00-03-0](#) [0952-0-00-00-00-00-03-0](#) [0522-0-00-00-00-00-03-0](#) [0257-0-00-00-00-00-03-0](#) [1067-1-00-00-00-00-03-0](#) [0542-0-00-00-00-00-03-0](#) [8940-0-00-00-00-00-03-0](#) [3157-0-00-00-00-00-03-0](#) [3158-0-00-00-00-00-03-0](#)