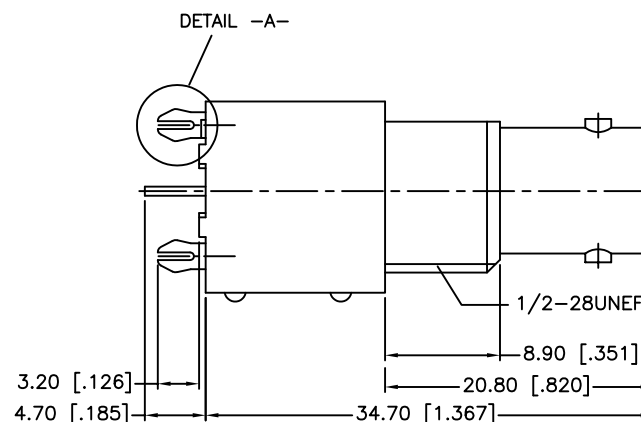
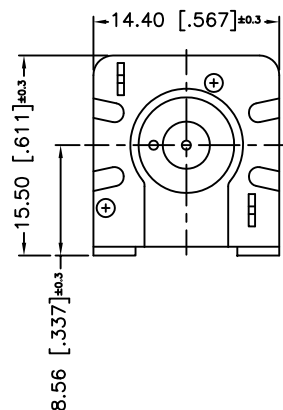
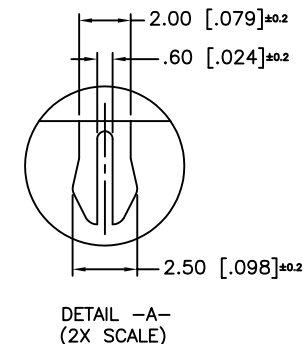
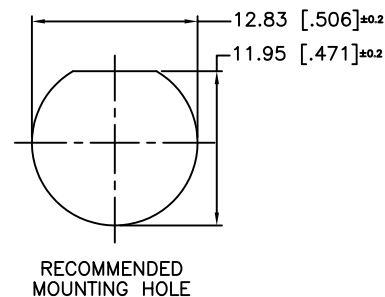
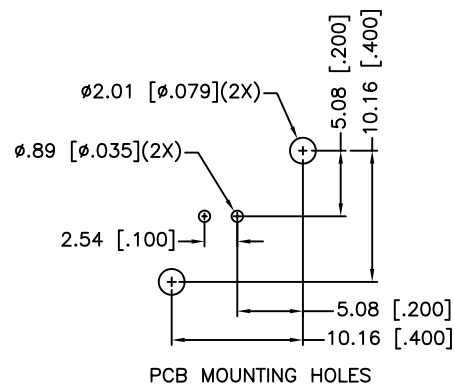


REV.	DATE	ECR NO	DESCRIPTION
A	02/24/04	--	UPDATE DRAWING FORMAT/MODIFY MOUNT POSTS
B	02/02/10	2012	HARDWARES REMOVED



NOTE:
1. MAX. PANEL THICKNESS = 5mm

					<div>UNLESS OTHERWISE SPECIFIED DIMENSIONS ARE IN MILLIMETERS. DIMENSIONS IN [] ARE IN INCHES AND FOR CUSTOMER REFERENCE ONLY.</div> <div>UNLESS OTHERWISE SPECIFIED TOLERANCES FOR MILLIMETERS ARE: 0.5 – 8mm ± 0.20mm 8 – 30mm ± 0.40mm 30 – 120mm ± 0.50mm</div> <div>UNLESS OTHERWISE SPECIFIED TOLERANCES FOR INCHES ARE: .020 – .315 = ± 0.007” .315 – 1.180 = ± 0.015” 1.180 – 4.724 = ± 0.020”</div> <div>DO NOT SCALE DRAWING</div>	APPROVALS	DATE	Amphenol Connex							
						DRAWN	CLEMENT						02/02/10		
						CHECKED			PART DESCRIPTION						
5	MOUNTING POST	BRASS	NICKEL	1			ISSUED			BNC STRAIGHT PC MOUNT RECEPT. JACK					
4	CONTACT PIN	PHOS. BRONZE	GOLD	1			SHEET	1 OF 1		PART NO.					
3	INSULATOR	P.P.	NATURAL	1						112411					
2	BODY	ZINC DIECAST	NICKEL	1			CAD FILE	C:/112/112411.DWG	DWG. NO.	112411.DWG	REV.	B	SIZE	A	SCALE
1	HOUSING	P.P.	BLACK	1											
	DESCRIPTION	MATERIAL	FINISH	QTY											

Mouser Electronics

Authorized Distributor

Click to View Pricing, Inventory, Delivery & Lifecycle Information:

[Amphenol:](#)

[112411](#)