

4

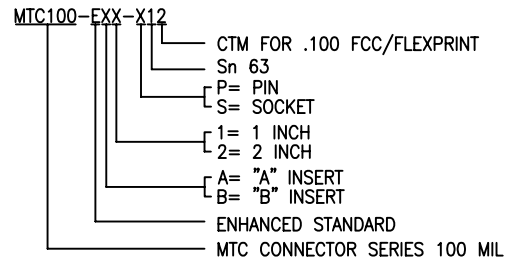
3

2

1

## NOTES:

## 1. PART NUMBER VARIABLE:



## 2. MATERIAL:

- A) PIN/SOCKET INSERT HIGH GRADE POLYARYLENE THERMOPLASTIC.  
 B) PIN CONTACT COPPER ALLOY PER ASTM B36, ASTM B36M  
 C) SOCKET CONTACT COPPER ALLOY PER ASTM B103, ASTM B103M (A).  
 D) CABLE AND INSERT SEAL MODIFIED THERMOPLASTIC HOT MELT SEALANT.  
 E) INTERFACIAL SEAL FLUOROSILICONE PER MIL-R-25988.  
 F) TERMINATION MODULE TRANSPARENT BLUE HEAT SHRINKABLE, RADIATION CROSS LINKED PVF .2

## 3. FINISH:

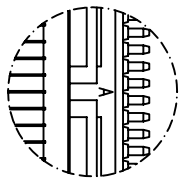
- A) PIN/SOCKET INSERT AS MOLDED.  
 B) PIN/SOCKET CONTACT GOLD PLATE PER ASTM B488, CLASS 1, TYPE 2, GRADE C.  
 C) CONTACT TAIL SOLDER COATED PER IPC J-STD 006 (Sn63), FLUX COATED PER IPC J-STD 006, TYPE RMA.

4. NUMBER ONE POSITION IS MARKED AS SHOWN IN CONTRASTING COLOR ON INTERFACE.

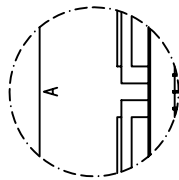
5. THESE INSERTS MEET THE REQUIREMENTS OF RAYCHEM SPECIFICATION C-6111.

## TABULATION

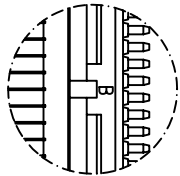
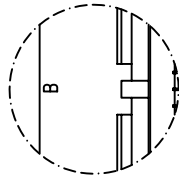
SIZE		WEIGHT MAXIMUM LBS.	GRAMS	DIM. "Y"	DIM. "Z"
1 INCH INSERT	PIN	.0053	2.404	1.15	1.05
	SOC.	.0060	2.722	[29.2]	[26.7]
2 INCH INSERT	PIN	.0103	4.7	2.15	2.05
	SOC.	.0119	5.398	[54.6]	[52.1]



PIN

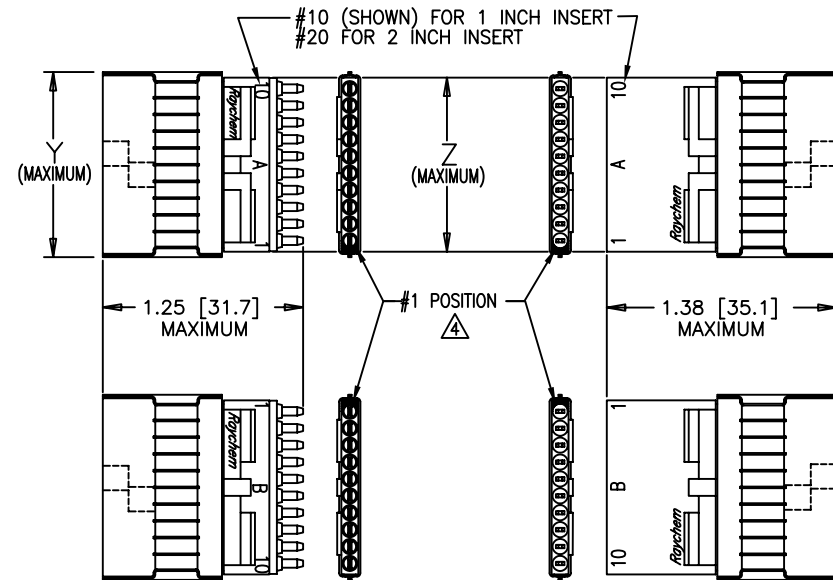


SOCKET

AUXILIARY VIEW  
OF 2 INCH INSERT  
KEYS/KEYWAYS

If this document is printed it becomes uncontrolled. Check for the latest revision

REVISIONS			
LTR	DESCRIPTION	DATE	APPROVED
D	REVISED PER ECN T-19487	FEB-08-05	M. HIGGY
E	PER ECO-10-004620	MAR-3-2010	M. HIGGY

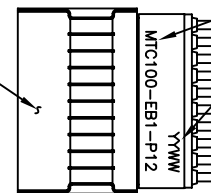


PIN INSERT

INTERFACIAL SEAL

SOCKET INSERT

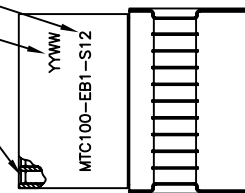
TERMINATION MODULE  
COMMON TO PIN AND  
SOCKET ASSEMBLIES  
(INCLUDES CABLE  
AND INSERT SEALS)



PART NUMBER


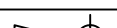
DATE CODE

CONTACTS PIN  
OR SOCKET  
10 EACH FOR 1 INCH INSERT  
20 EACH FOR 2 INCH INSERT  
EQUALLY SPACED



©2010 Tyco Electronics Corporation. All rights reserved.

CUSTOMER DRAWING

UNLESS OTHERWISE SPECIFIED DIMENSIONS ARE IN INCHES. METRIC DIMENSIONS ARE IN BRACKETS.	DRAWN	LUTTICKEN	87SEPT15	 <b>Tyco Electronics</b>	Raychem Interconnect 300 Constitution Drive Menlo Park, CA 94025 U.S.A.		
	CHECKED	J.B.					
	APPROVED	J.BLAIR	87OCT02				
	APPROVED						
DECIMALS .XXX ± .005 .XX ±				TITLE	ASSEMBLY, INSERT, FLAT CABLE TERMINATION, TEMPERATURE RATING 125 CELSIUS DEGREE MTC 100 SERIES		
ANGLES .X ±							
	CAD NAME	MTC100-EXX-X12					
	THIRD ANGLE PROJECTION						
WEIGHT: MAXIMUM SEE TABULATION				SIZE	CAGE CODE:	DWG. NO.	REV
				A	06090	MTC100-EXX-X12	E
				SCALE: NONE			SHEET 1 OF 1

4

3

2

1

SHEET 1  
MTC100-EXX-X12

# Mouser Electronics

Authorized Distributor

Click to View Pricing, Inventory, Delivery & Lifecycle Information:

[TE Connectivity:](#)

[922685-000](#)