

PRODUCT NUMBER

6 4 9 9 1 - X X X - X X X X LF

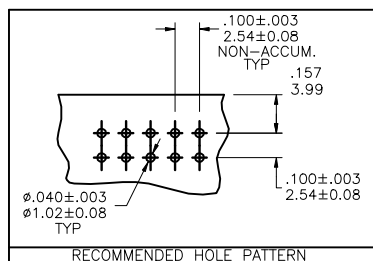
PLATING
NOTE 12

S=15μ" [0.38μm] GOLD/GXT
ON CONTACT AREA
100μ" [2.54μm] PURE TIN
ON TAIL
G=30μ" [0.76μm] GOLD/GXT
ON CONTACT AREA
100μ" [2.54μm] PURE TIN
ON TAIL

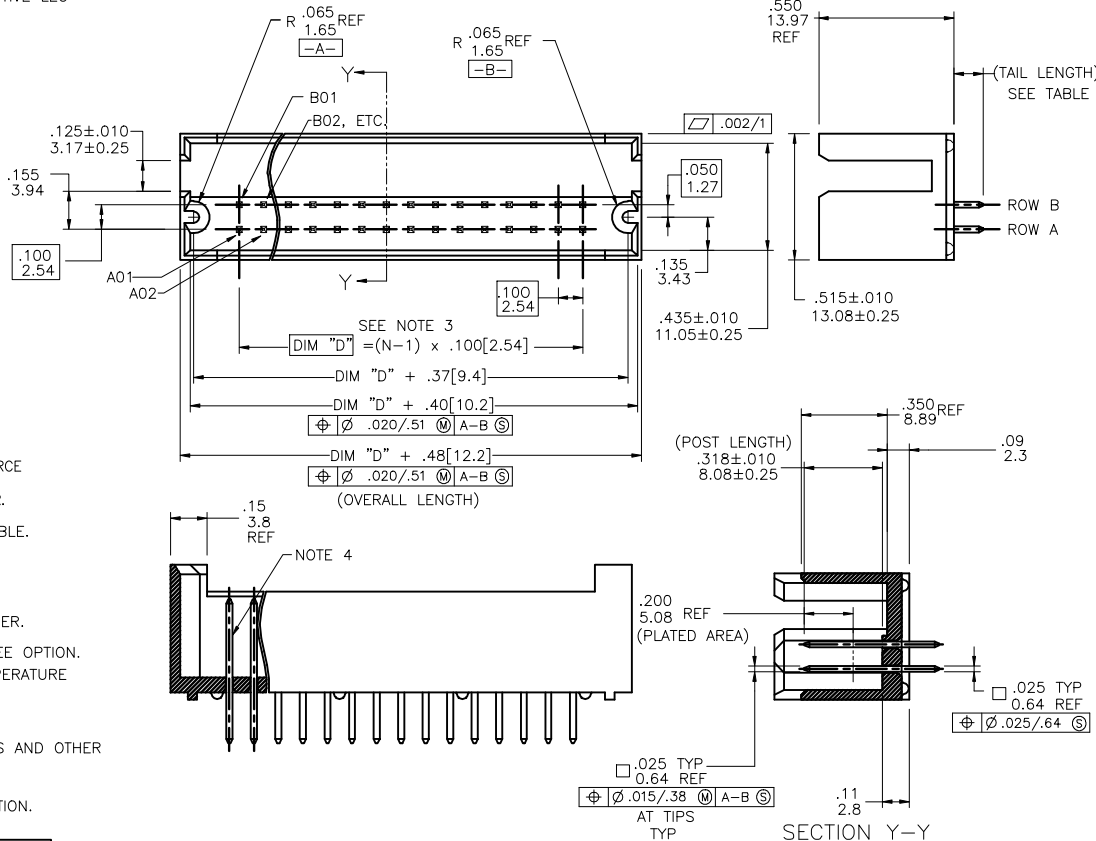
STYLE	TAIL LENGTH
3	.090/2.29
4	.120/3.05

POSITIONS PER ROW
05 TO 50

- HOUSING MAT'L: HIGH TEMPERATURE THERMOPLASTIC. UL94V-0
COLOR: NATURAL
- PIN MATERIAL: PHOSPHOR-BRONZE
- TO DETERMINE DIMENSION
N= NUMBER OF POSITIONS PER ROW
EXAMPLE: 10 POS., (N-1) X .100[2.54]=.900/22.87
- 3LBS./1.36 KG MIN. RETENTION IN EITHER DIRECTION.
- PACKAGED IN TRAYS.
- RETENTIVE LEG:
5LB/2.3KG MAX INSERTION FORCE AND .25LB./1KG MIN RETENTION FORCE
PER RETENTIVE PIN USING .062/1.57 THICK CIRCUIT BOARD AND RECOMMENDED
HOLE PATTERN. RETENTIVE LOCATION AT THE DISCRETION OF THE MANUFACTURER.
RETENTION IS TWO PINS PER PART ADJACENT TO ONE ANOTHER.
OMIT FROM PRODUCT NUMBER IF THIS FEATURE IS NOT APPLICABLE.
- UNDER PLATING 50μ"/1.27μm Ni.
- FOR POLARIZATION SPECIFY POSITION NUMBER
(e.i., A03=ROW A POS. 3) TO OMIT PIN
IF FEATURE IS NOT APPLICABLE, REMOVE FROM PRODUCT NUMBER.
- ADD "LF" SUFFIX AT THE END OF PART NUMBER FOR LEAD FREE OPTION.
- THE HOUSING WILL WITHSTAND EXPOSURE TO 260°C PEAK TEMPERATURE
FOR 15 SECONDS IN A WAVE SOLDER APPLICATION WITH A 1.5mm
MINIMUM THICK CIRCUIT BOARD. SEE APPLICATION NOTES/PROCEDURES
IF THEY ARE AVAILABLE.
- IF "LF" P/N THE PRODUCT MEETS EUROPEAN UNION DIRECTIVES AND OTHER
COUNTRY REGULATION AS DESCRIBED IN GS-22-008.
- PLATING OPTIONS:
MAY BE EITHER GOLD OR GXT PLATED AT MANUFACTURER'S OPTION.



RECOMMENDED HOLE PATTERN



mat'l. code				surface		tolerance		projection		product family	
NOTES 1 & 2				ISO 1302		ISO 406		ISO 1101		HEADER	
lir	ech no	dr	date	angles	linear	linear	linear	linear	linear	title	
A	V92814	DAI	8/24/99							.100/2.54cc GUIDE PIN (SLOTTED)	
B	V11526	DAI	5/21/01							SHROUDED VERTICAL HEADER	
C	V212895	TAB	1/09/03	0°±2'						scale 1:1	
D	M05-0089	MHT	5/20/05	dr						dwg no	
E	M07-0116	AGS	2/19/07	eng						sheet 1 of 1 size	
F	M09-0059	MHT	4/16/09	chr						64991 A3	
G	M09-0154	MHT	9/10/09	appd						type Product Customer Drawing	
sheet	revision	G									
index	sheet	1									

Mouser Electronics

Authorized Distributor

Click to View Pricing, Inventory, Delivery & Lifecycle Information:

[FCI / Amphenol:](#)

[64991-S25-3R](#) [64991-S36-4LF](#) [64991-G10-4LF](#) [64991-G06-4LF](#) [64991-G07-4LF](#) [64991-G15-4LF](#) [64991-G17-4LF](#)
[64991-G20-4LF](#) [64991-G25-4LF](#) [64991-G26-4LF](#) [64991-G30-4LF](#) [64991-G35-4LF](#) [64991-G36-4LF](#) [64991-G48-4LF](#) [64991-S05-4LF](#) [64991-S06-3RLF](#) [64991-S07-4LF](#) [64991-S08-3RLF](#) [64991-S08-4LF](#) [64991-S08-4RLF](#) [64991-S10-4LF](#) [64991-S12-3RLF](#) [64991-S12-4LF](#) [64991-S13-4LF](#) [64991-S15-4LF](#) [64991-S16-4LF](#) [64991-S17-4LF](#)
[64991-S20-4LF](#) [64991-S25-3RLF](#) [64991-S25-4LF](#) [64991-S30-4LF](#) [64991-S32-4LF](#) [64991-G20-4RLF](#) [64991-S12-4RLF](#) [64991-S15-4R](#) [64991-S15-4RLF](#) [64991-S16-4RLF](#) [64991-S20-4R](#) [64991-S20-4RLF](#) [64991-S25-4RLF](#) [64991-G05-4LF](#) [64991-G05-4R](#) [64991-G05-4RLF](#) [64991-G06-4R](#) [64991-G06-4RLF](#) [64991-G08-4](#) [64991-G08-4LF](#) [64991-G08-4R](#) [64991-G08-4RLF](#) [64991-G09-4](#) [64991-G09-4LF](#) [64991-G09-4R](#) [64991-G09-4RLF](#) [64991-G10-4RLF](#)
[64991-G11-4](#) [64991-G11-4LF](#) [64991-G11-4R](#) [64991-G11-4RLF](#) [64991-G12-4](#) [64991-G12-4LF](#) [64991-G12-4RLF](#) [64991-G13-4](#) [64991-G13-4LF](#) [64991-G13-4R](#) [64991-G13-4RLF](#) [64991-G14-4](#) [64991-G14-4LF](#) [64991-G14-4R](#)
[64991-G14-4RLF](#) [64991-G15-4RLF](#) [64991-G16-4](#) [64991-G16-4LF](#) [64991-G16-4R](#) [64991-G16-4RLF](#) [64991-G17-4R](#) [64991-G17-4RLF](#) [64991-G18-4](#) [64991-G18-4LF](#) [64991-G18-4R](#) [64991-G18-4RLF](#) [64991-G19-4LF](#) [64991-G19-4R](#)
[64991-G19-4RLF](#) [64991-G21-4](#) [64991-G21-4LF](#) [64991-G21-4R](#) [64991-G21-4RLF](#) [64991-G22-4](#) [64991-G22-4LF](#) [64991-G22-4R](#) [64991-G22-4RLF](#) [64991-G23-4](#) [64991-G23-4LF](#) [64991-G23-4R](#) [64991-G23-4RLF](#) [64991-G24-4](#)
[64991-G24-4LF](#) [64991-G24-4R](#) [64991-G24-4RLF](#) [64991-G25-4R](#)